

# BRAUN

## MobileShave

**M-90** Type 5609

**M-60** Type 5607

**M-30** Type 5604

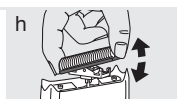
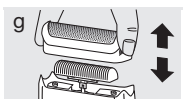
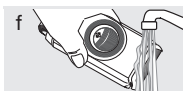
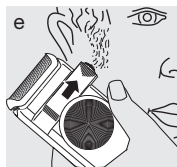
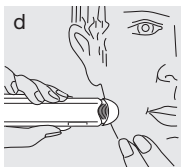
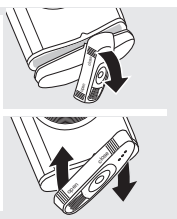
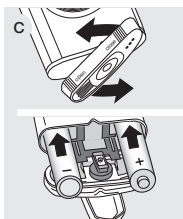
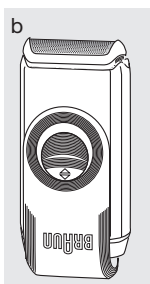
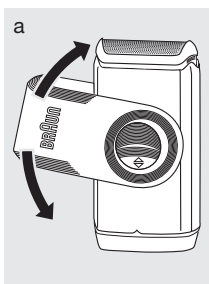
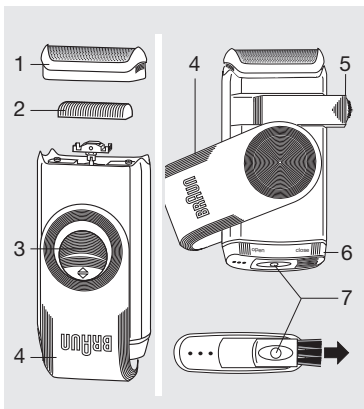


90917966/IV-16

English	3
Français	4
Polski	6
Český	9
Slovenský	11
Magyar	13
Hrvatski	14
Slovenski	17
Türkçe	19
Română (RO/MD)	20
Русский	23
Українська	26
عربي	31

Braun GmbH  
Frankfurter Straße 145  
61476 Kronberg/Germany  
[www.braun.com](http://www.braun.com)  
[www.service.braun.com](http://www.service.braun.com)

UK/FR/PL/CZ/SK/HU/HR/SI/TR/RO/MD/RU/  
UA/Arab



## English

Read these instructions completely, they contain safety information. Keep them for future reference.

### Warning



This appliance is suitable for use in a bath or shower.

Never use the appliance with a damaged foil.

This appliance can be used by children aged from 8 years and above and persons with reduced physical, sensory or mental capabilities or lack of experience and knowledge if they have been given supervision or instruction concerning the safe use of the appliance and understand the hazards involved. Children shall not play with the appliance. Cleaning and user maintenance shall not be made by children unless they are older than 8 years and supervised.

### Batteries

This appliance operates with two 1.5 volt batteries (alkaline manganese batteries type LR 6, AM 3, MN 1500 or size AA alkaline). These batteries provide a shaving capacity of approx. 60 minutes.

Different types, brands, chargeable and non-rechargeable, new and used batteries are not to be used together. Rechargeable batteries are to be removed from the appliance before being charged. Non-rechargeable batteries are not to be recharged. The supply terminals are not to be short-circuited. When action (e.g. speed/vibration) reduces, change the battery promptly.

Batteries may explode or leak and cause burn injury if recharged, disposed of in fire, mixed with a different battery type, inserted backwards or disassembled. If batteries leak, wipe device with a damp cloth and wash hands. If any material gets in eyes, contact a physician immediately. Remove the batteries before storing your device for extended periods.

### Replacing the batteries

Make sure the appliance is turned off and completely dry. To open the battery cover (6), turn it 90° as shown in (c). Insert batteries with the poles in the direction marked.

### Shaving

Turn the twisting protective cap (4) (a) until it clicks in place as shown (b). To switch the shaver on, push the on/off switch (3) up.

### Long hair trimmer (5) (M-90 model only)

To operate, slide the long hair trimmer to the right (e) and turn on the appliance. After use, slide it back until it engages.

# Obsah je uzamčen

**Dokončete, prosím, proces objednávky.**

**Následně budete mít přístup k celému dokumentu.**



**Proč je dokument uzamčen? Nahněvat Vás rozhodně nechceme. Jsou k tomu dva hlavní důvody:**

- 1) Vytvořit a udržovat obsáhlou databázi návodů stojí nejen spoustu úsilí a času, ale i finanční prostředky. Dělali byste to Vy zadarmo? Ne\*. Zakoupením této služby obdržíte úplný návod a podpoříte provoz a rozvoj našich stránek. Třeba se Vám to bude ještě někdy hodit.

*\*) Možná zpočátku ano. Ale vězte, že dotovat to dlouhodobě nelze. A rozhodně na tom nezbohatneme.*

- 2) Pak jsou tady „roboti“, kteří se přiživují na naší práci a „vysávají“ výsledky našeho úsilí pro svůj prospěch. Tímto krokem se jim to snažíme překazit.

A pokud nemáte zájem, respektujeme to. Urgujte svého prodejce. A když neuspějete, rádi Vás uvidíme!