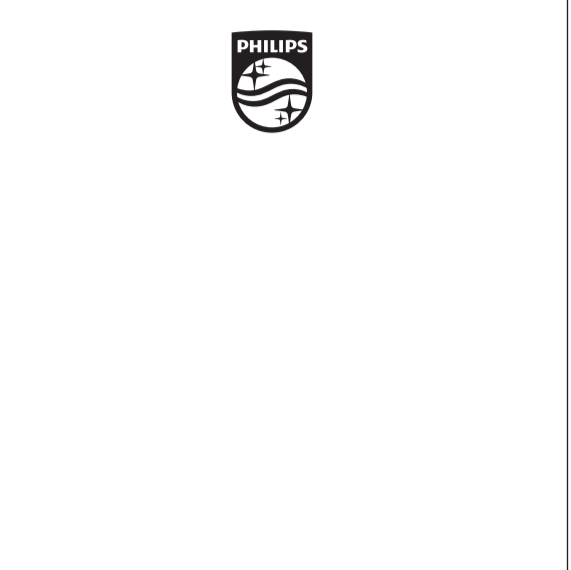


HP8660 HP8661 HP8662 HP8663

PHILIPS



Specifications are subject to change without notice © 2014 Koninklijke Philips N.V. All rights reserved.

English

Congratulations on your purchase, and welcome to Philips To fully benefit from the support that Philips offers, register your product at www.philips.com/welcome.

1 Important

Read this user manual carefully before you use the appliance and keep it for future reference.

WARNING: Do not use this appliance near water.

When the appliance is used in a bathroom, unplug it after use since the proximity of water presents a risk, even when the appliance is switched off.

WARNING: Do not use this appliance near bathtubs, showers, basins or other vessels containing water.

Always unplug the appliance after use.

If the appliance overheats, it switches off automatically. Unplug the appliance and let it cool down for a few minutes.

Before you switch the appliance on again, check the grilles to make sure they are not blocked by fluff, hair, etc.

If the mains cord is damaged, you must have it replaced by Philips, a service centre authorised by Philips or similarly qualified persons in order to avoid a hazard.

This appliance can be used by children aged from 8 years and above and persons with reduced physical, sensory or mental capabilities or lack of experience and knowledge if they have been given supervision or instruction concerning use of the appliance in a safe way and understand the hazards involved.

Children shall not play with the appliance. Cleaning and user maintenance shall not be made by children without supervision.

For additional protection, we advise you to install a residual current device (RCD) in the electrical circuit that supplies the bathroom. This RCD must have a rated residual operating current not higher than 30mA. Ask your installer for advice.

Do not insert metal objects into the grilles to avoid electric shock.

Never block the air grilles.

Before you connect the appliance, ensure that the voltage indicated on the appliance corresponds to the local power voltage.

Do not use the appliance for any other purpose than described in this manual.

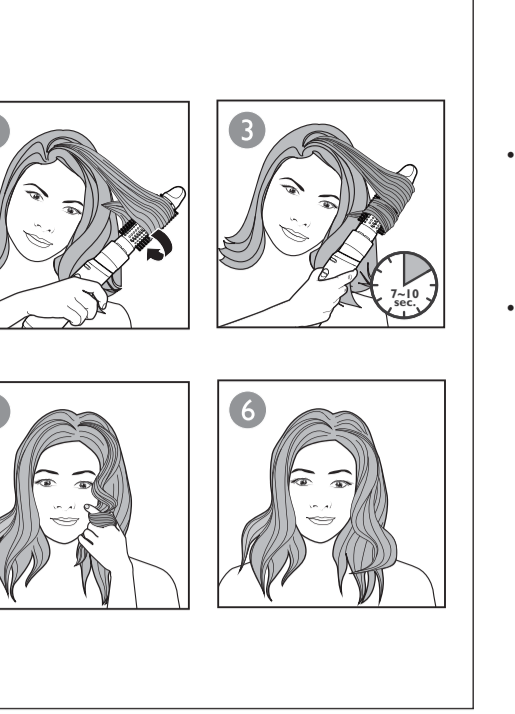
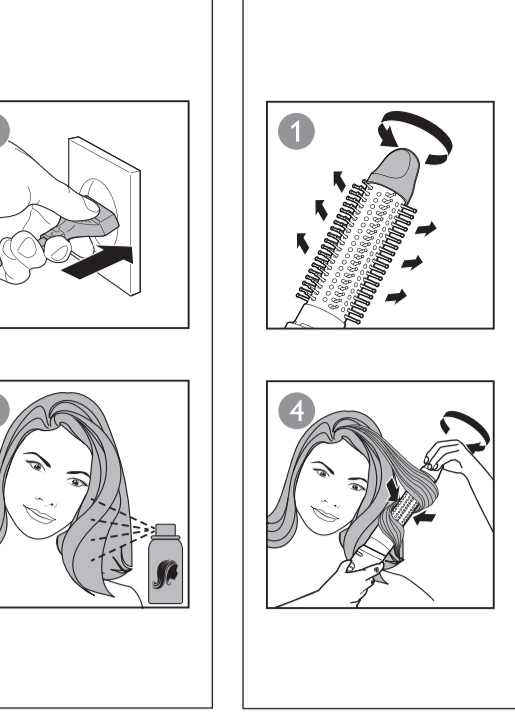
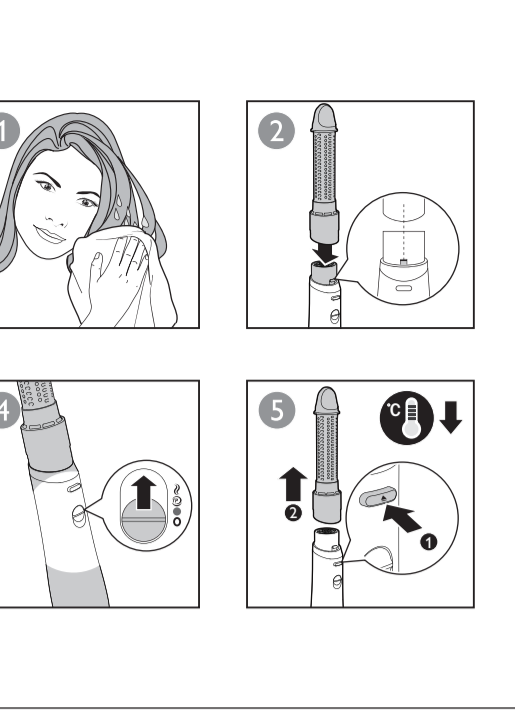
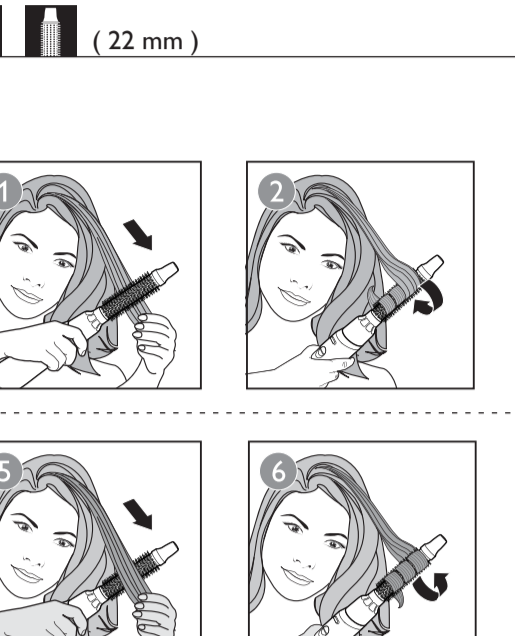
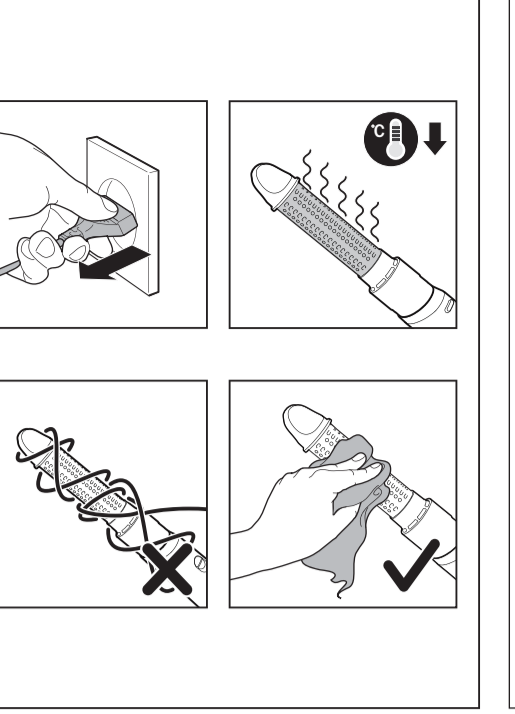
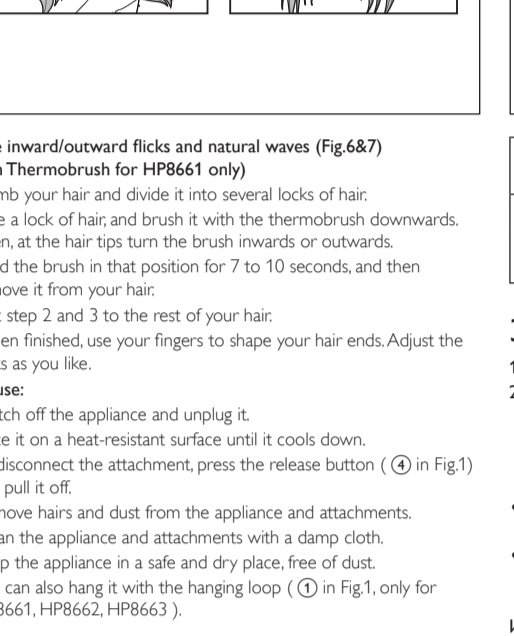
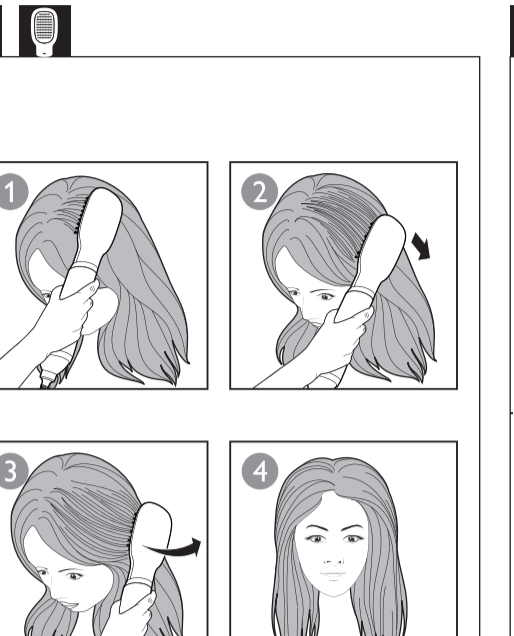
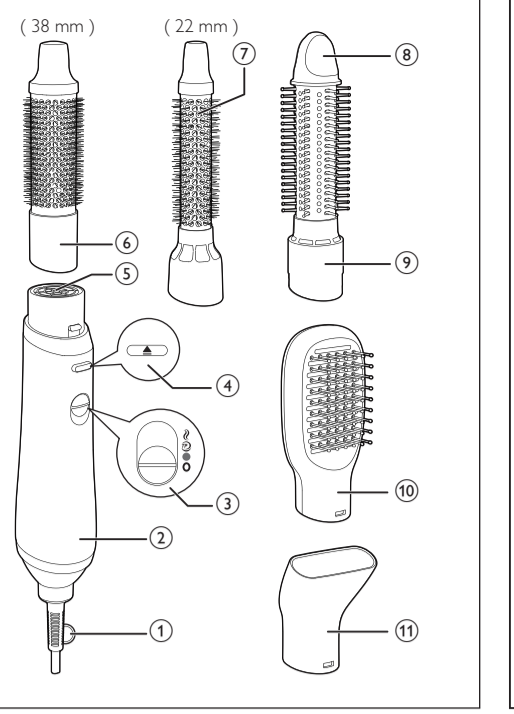
Do not use the appliance on artificial hair.

When the appliance is used in a bathroom, ensure that the voltage indicated on the appliance corresponds to the local power voltage.

Do not use the appliance on artificial hair.

When the appliance is used in a bathroom, ensure that the voltage indicated on the appliance corresponds to the local power voltage.

Do not use the appliance on artificial hair.



Срежьте inward/outward flanks and natural waves (Fig.6&7) (22mm Thermoprotect for HP8661 only)

1 Combine your hair and divide it into several locks of hair. Take a lock of hair, and brush it with the thermoprotect...

2 Repeat step 2 and 3 to the rest of your hair. 4 When finished use your fingers to shape your hair ends. Adjust the flaps as you like.

3 Оформите косата 1. Включите щетиците в контакт. 2. Полейте волосокот за ваздушна струя...

4 Гарантие and service If you need more information or if you have any problems, please visit the Philips website at www.philips.com or contact the Philips Customer Care Centre...

Електрокомплект (EMF) Tento přístroj Philips odpovídá všem platným normám a předpisům týkajícím se elektromagnetického poí. Životní prostředí Tento výrobek je navržen a vyroben z materiálů a komponentů vysoce kvality...

Купаоница. Та клопка мора имати преосталу радну електричну енергију која не прелази 30 mA. Савет зрачаје то монтирања. Немојте уметати металне предмете у ретке за пропуштање зрака како бисте избјегли опасност од струјног удара.

Електромагнетик емитер (ЭМВ) Эза Филипс келди се електромагнетне енергије оцсет ворозитно сабазирани е елиминират меглети. Купаоница Та клопка мора имати преосталу радну електричну енергију која не прелази 30 mA. Савет зрачаје то монтирања. Немојте уметати металне предмете у ретке за пропуштање зрака како бисте избјегли опасност од струјног удара.

2 Before styling your hair Note: Always let the appliance and attachments cool down before you connect or disconnect the attachments.

3 Style your hair 1 Connect the plug to a power supply socket. 2 Plug the appliance into the power and warm airflow...

2 При стилирању косе 1 Приклучи кабелот на напојување. 2 Приклучи апаратот на струју и топлиот ваздух...

2 Приклучи апаратот на струју и топлиот ваздух. 3 Приклучи апаратот на струју и топлиот ваздух.

2 Приклучи апаратот на струју и топлиот ваздух. 3 Приклучи апаратот на струју и топлиот ваздух.

2 Приклучи апаратот на струју и топлиот ваздух. 3 Приклучи апаратот на струју и топлиот ваздух.

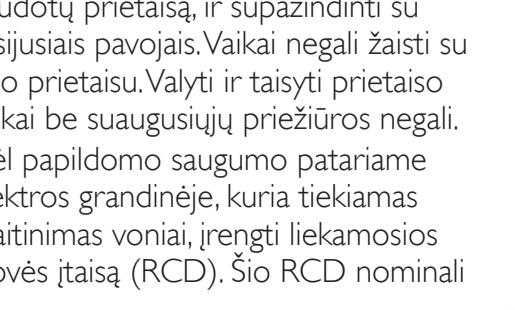
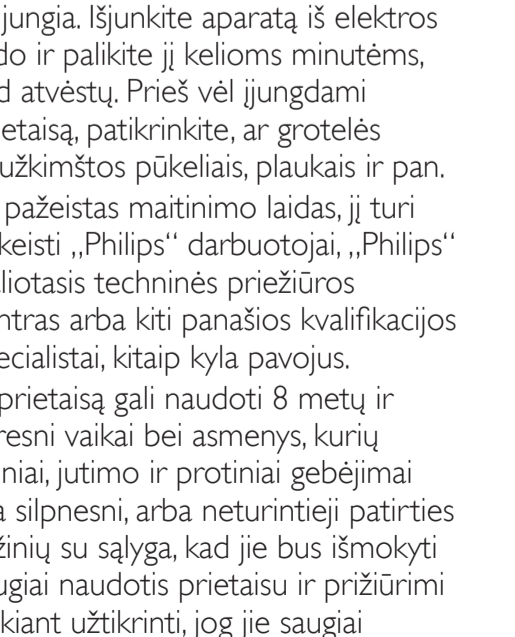
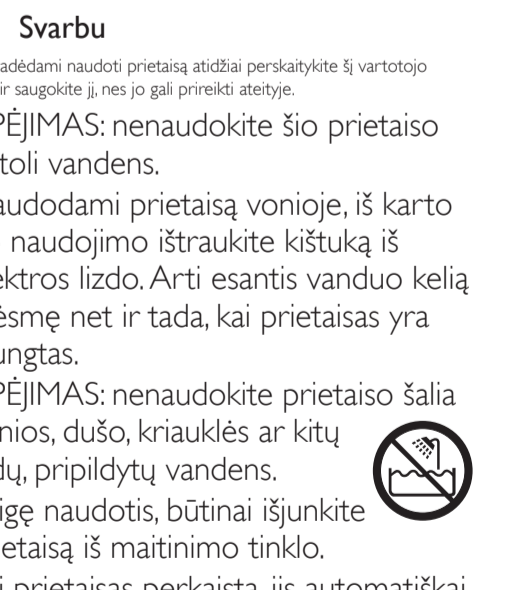
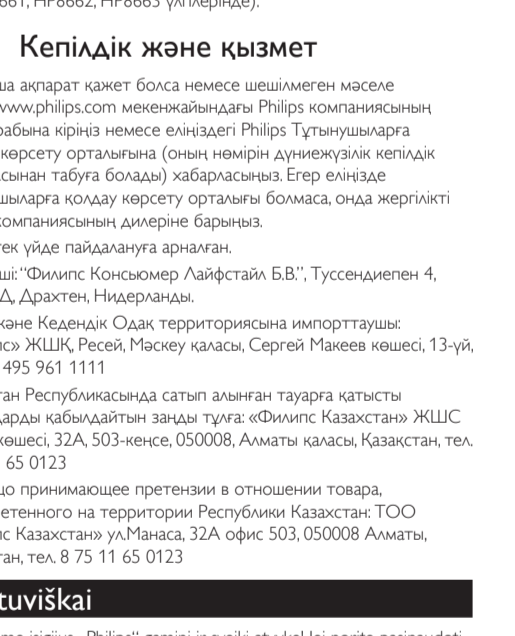
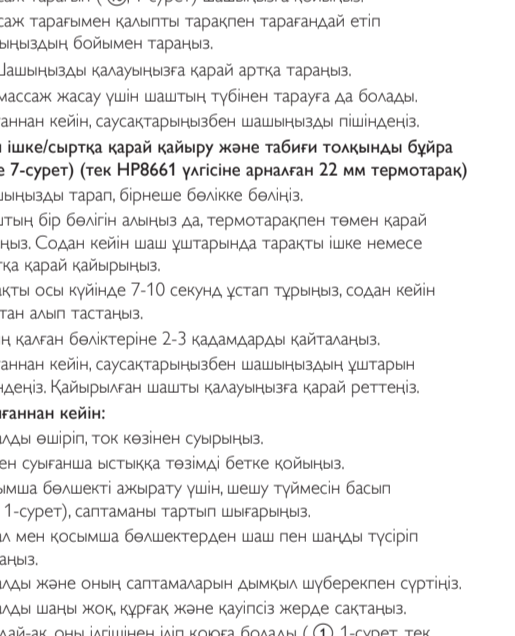
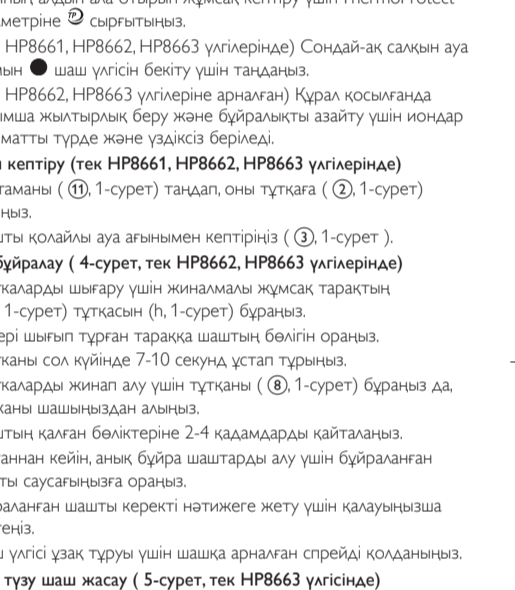
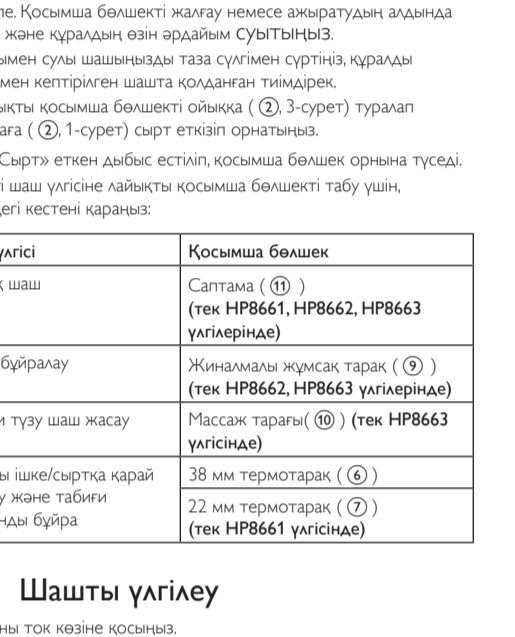
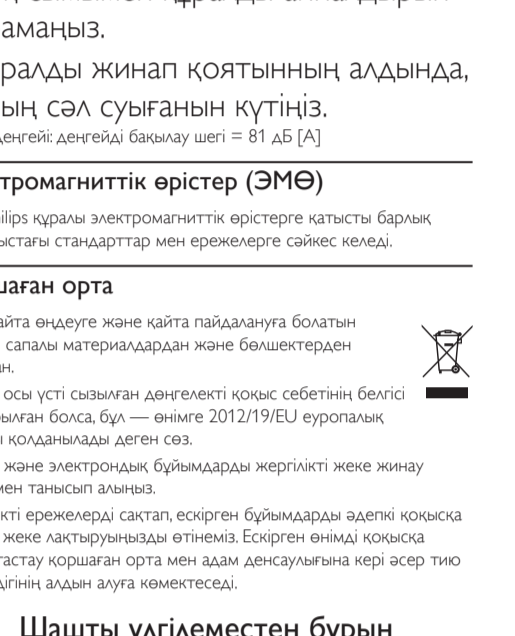
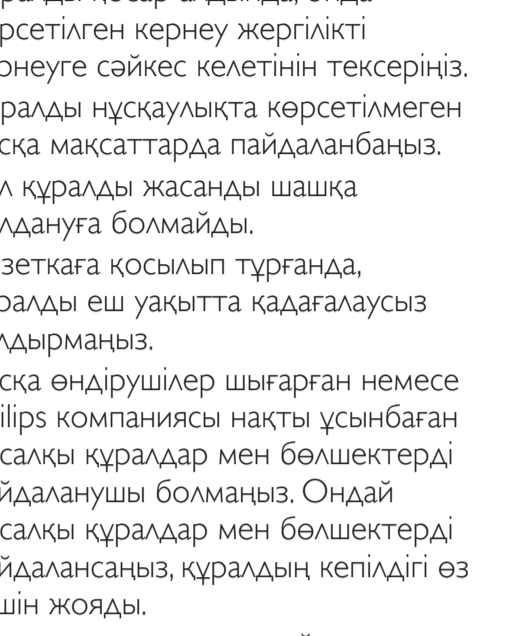
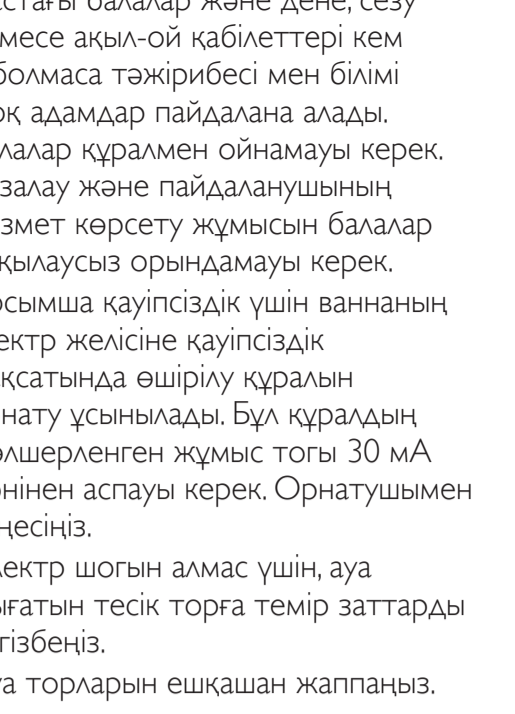
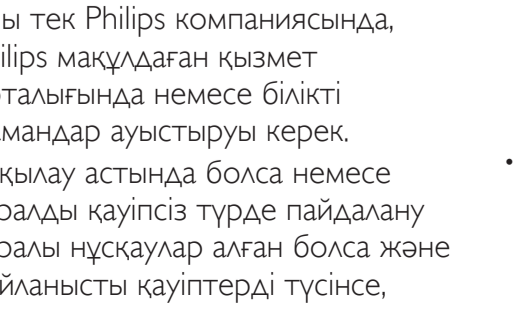
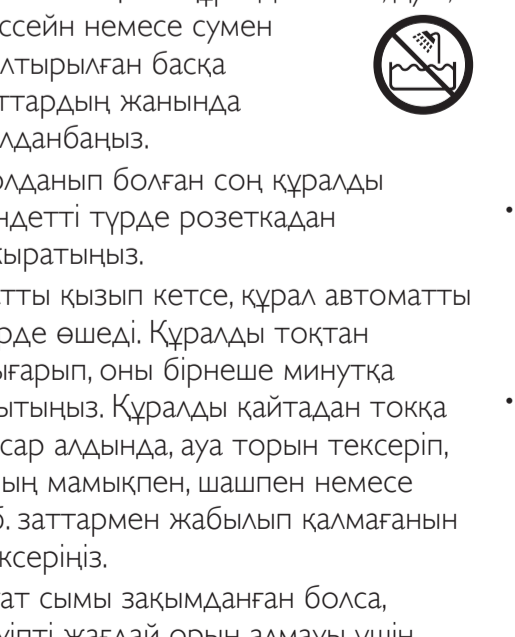
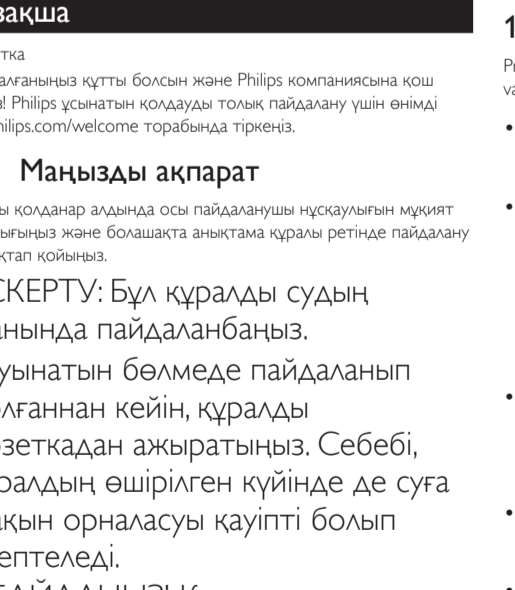
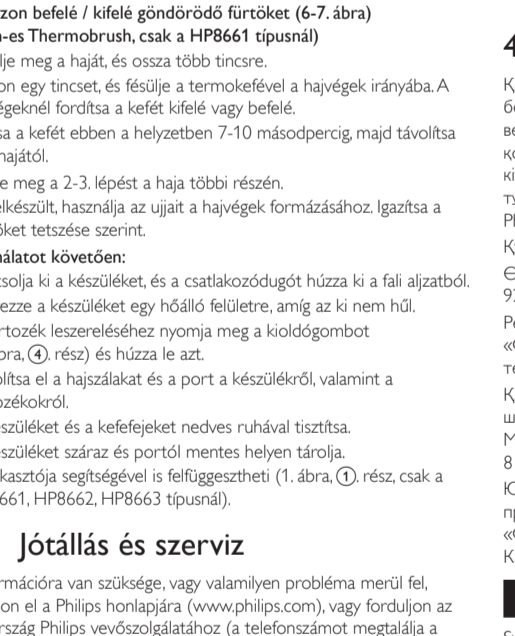
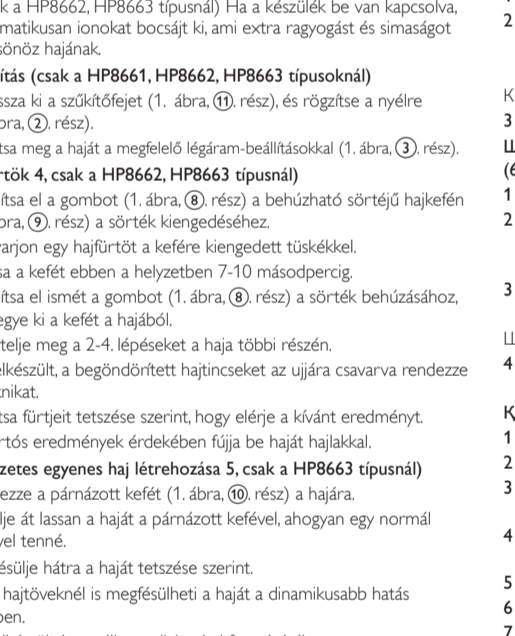
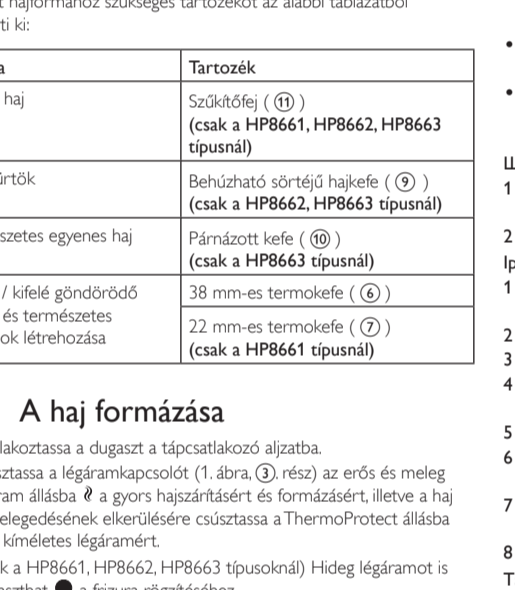
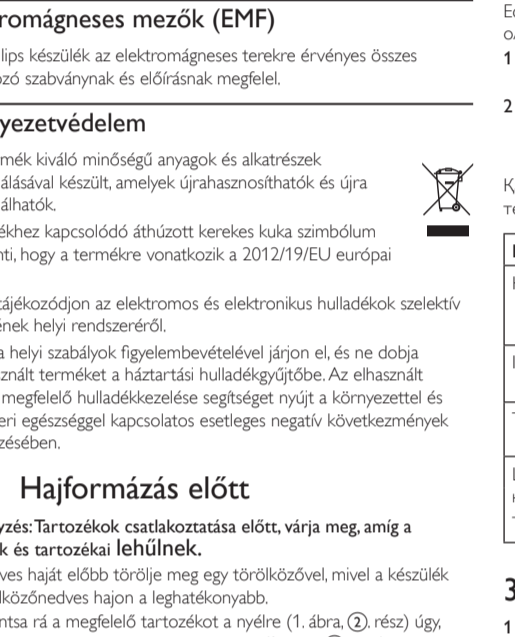
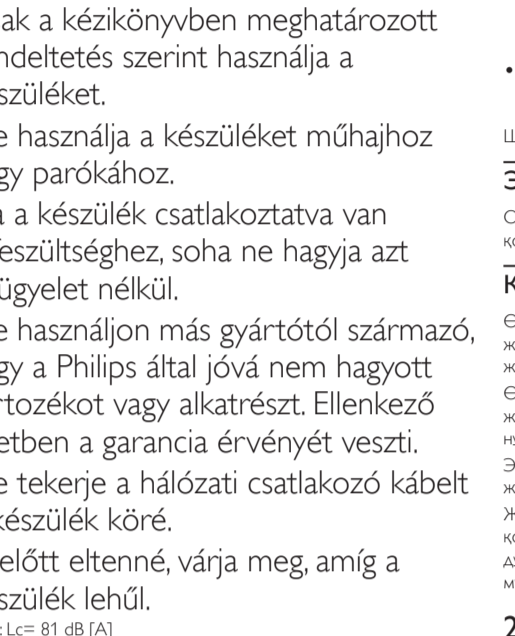
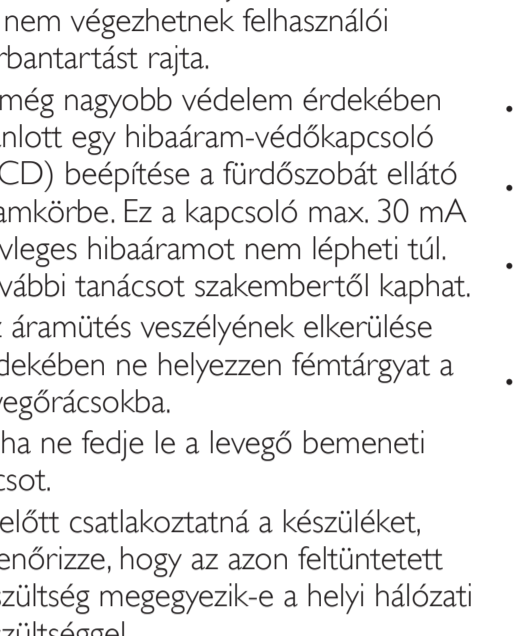
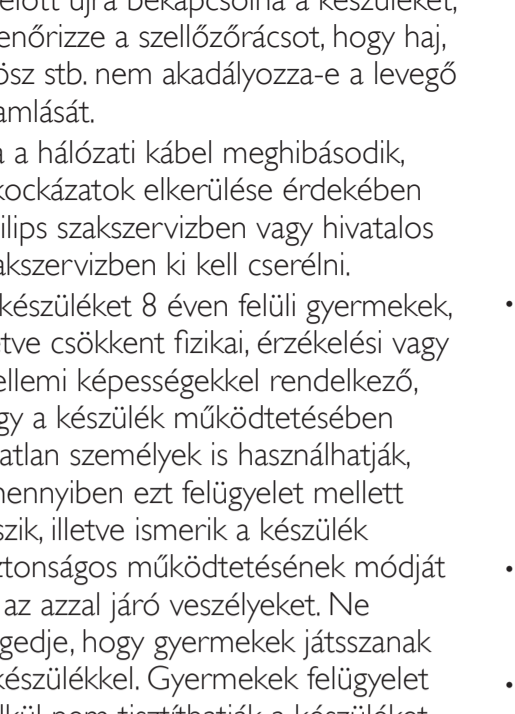
2 Before styling your hair Note: Always let the appliance and attachments cool down before you connect or disconnect the attachments.

2 Приклучи апаратот на струју и топлиот ваздух. 3 Приклучи апаратот на струју и топлиот ваздух.

2 Приклучи апаратот на струју и топлиот ваздух. 3 Приклучи апаратот на струју и топлиот ваздух.

2 Приклучи апаратот на струју и топлиот ваздух. 3 Приклучи апаратот на струју и топлиот ваздух.

2 Приклучи апаратот на струју и топлиот ваздух. 3 Приклучи апаратот на струју и топлиот ваздух.



Obsah je uzamčen

Dokončete, prosím, proces objednávky.

Následně budete mít přístup k celému dokumentu.



Proč je dokument uzamčen? Nahněvat Vás rozhodně nechceme. Jsou k tomu dva hlavní důvody:

- 1) Vytvořit a udržovat obsáhlou databázi návodů stojí nejen spoustu úsilí a času, ale i finanční prostředky. Dělali byste to Vy zadarmo? Ne*. Zakoupením této služby obdržíte úplný návod a podpoříte provoz a rozvoj našich stránek. Třeba se Vám to bude ještě někdy hodit.

**) Možná zpočátku ano. Ale vězte, že dotovat to dlouhodobě nelze. A rozhodně na tom nezbohatneme.*

- 2) Pak jsou tady „roboti“, kteří se přiživují na naší práci a „vysávají“ výsledky našeho úsilí pro svůj prospěch. Tímto krokem se jim to snažíme překazit.

A pokud nemáte zájem, respektujeme to. Urgujte svého prodejce. A když neuspějete, rádi Vás uvidíme!