



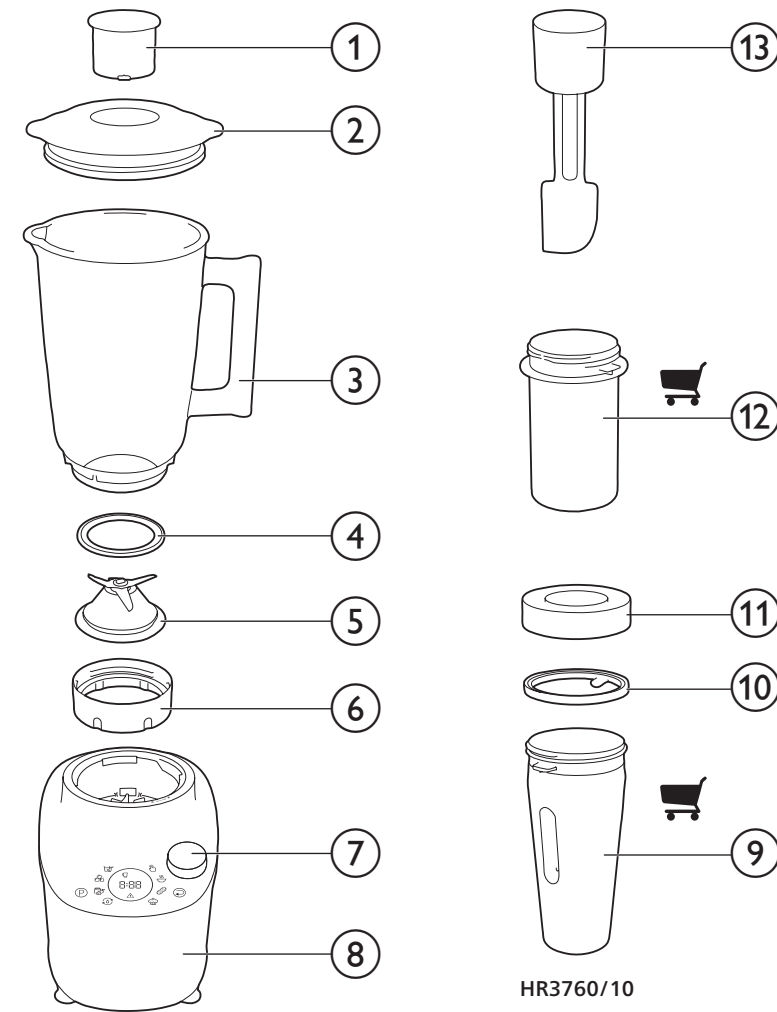
**PHILIPS**  
HR3760



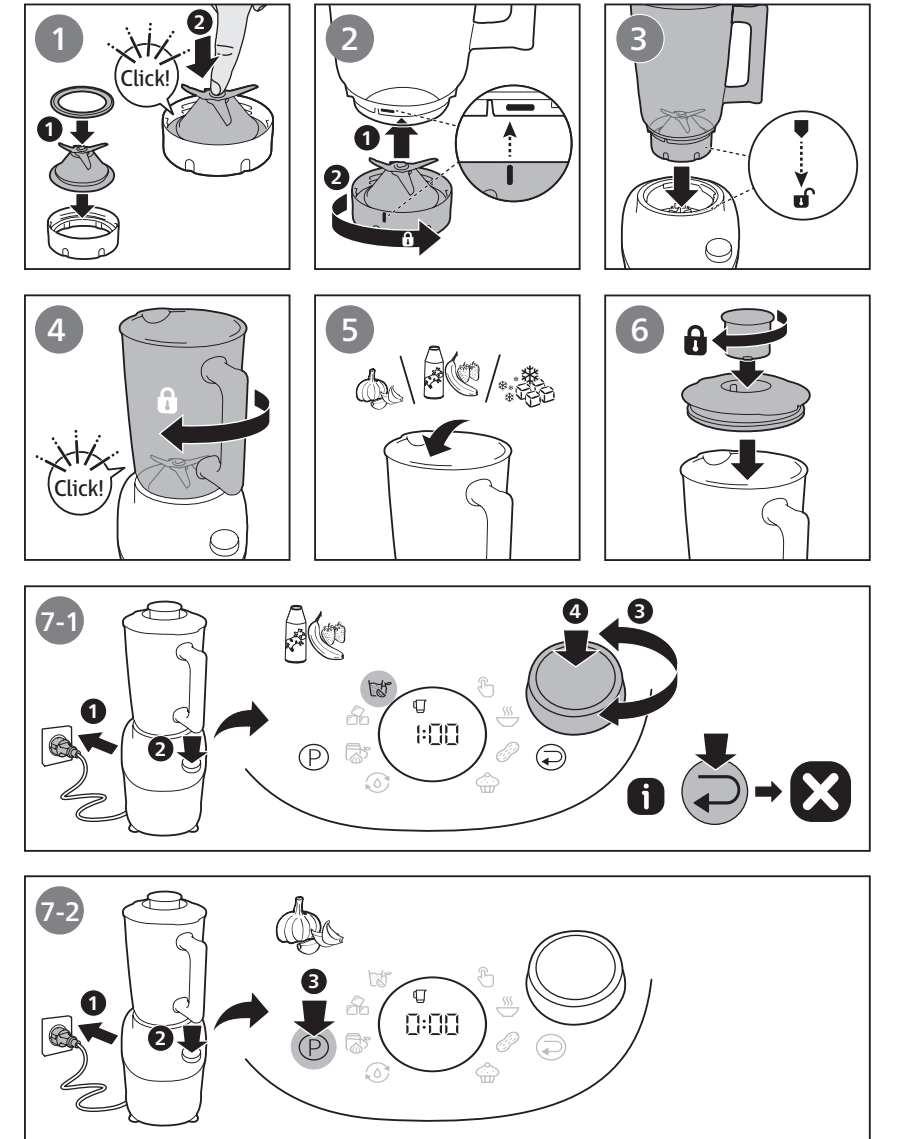
EN	User manual	7	FI	Käyttöopas	31
BG	Ръководство за потребителя	10	FR	Mode d'emploi	34
CS	Příručka pro uživatele	13	HR	Korisnički priručnik	37
DA	Brugervejledning	16	HU	Felhasználói kézikönyv	40
DE	Benutzerhandbuch	19	IT	Manuale utente	43
EL	Εγχειρίδιο χρήσης	22	LT	Vartotojo vadovas	46
ES	Manual del usuario	25	LV	Lietotāja rokasgrāmata	49
ET	Kasutusjuhend	28	54	מדריך למשתמש	HE



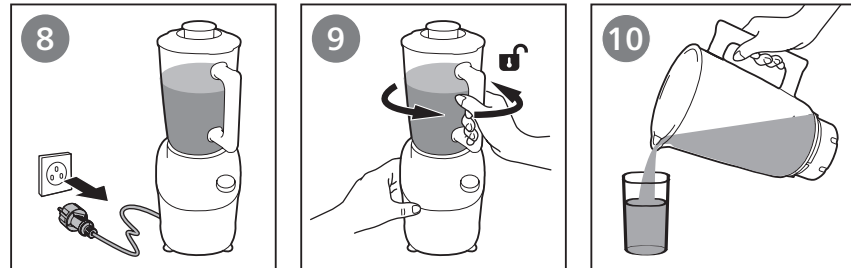
**1**



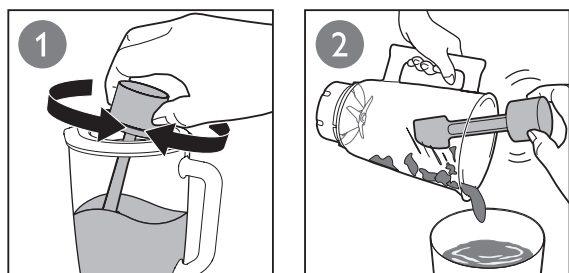
**2**



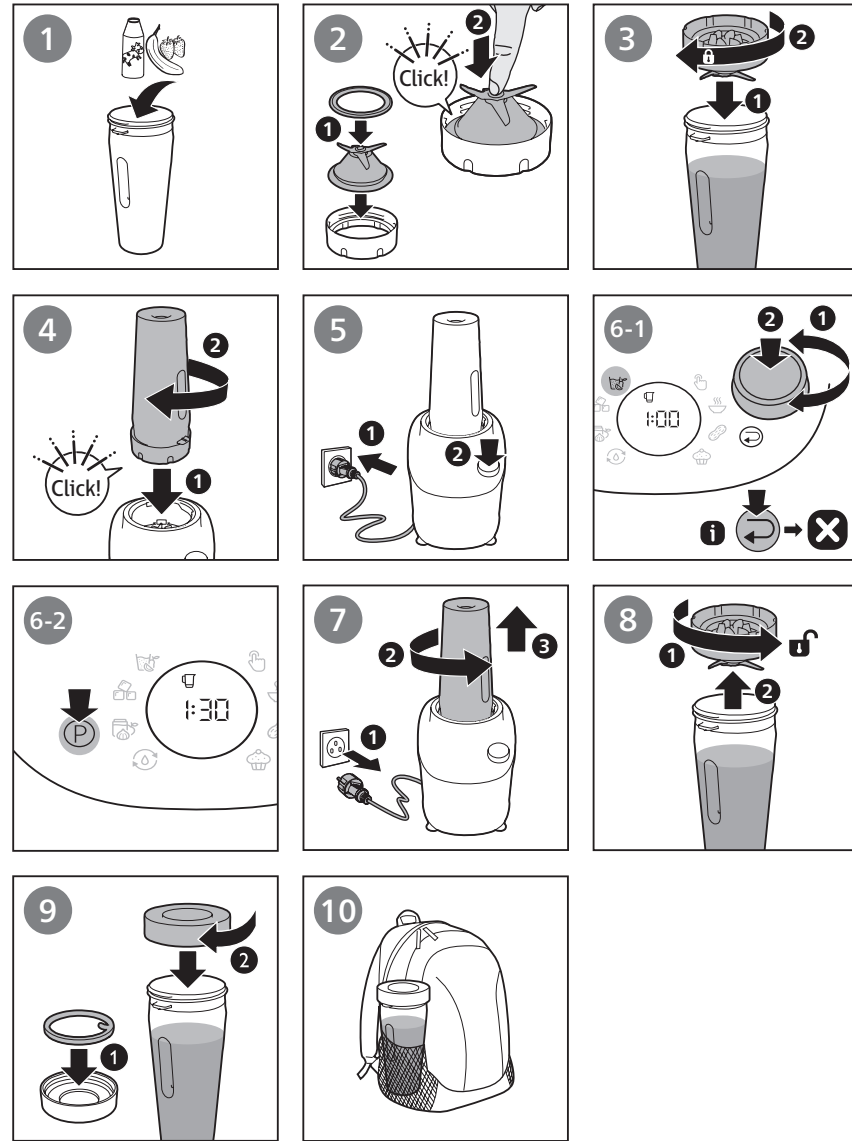
2 



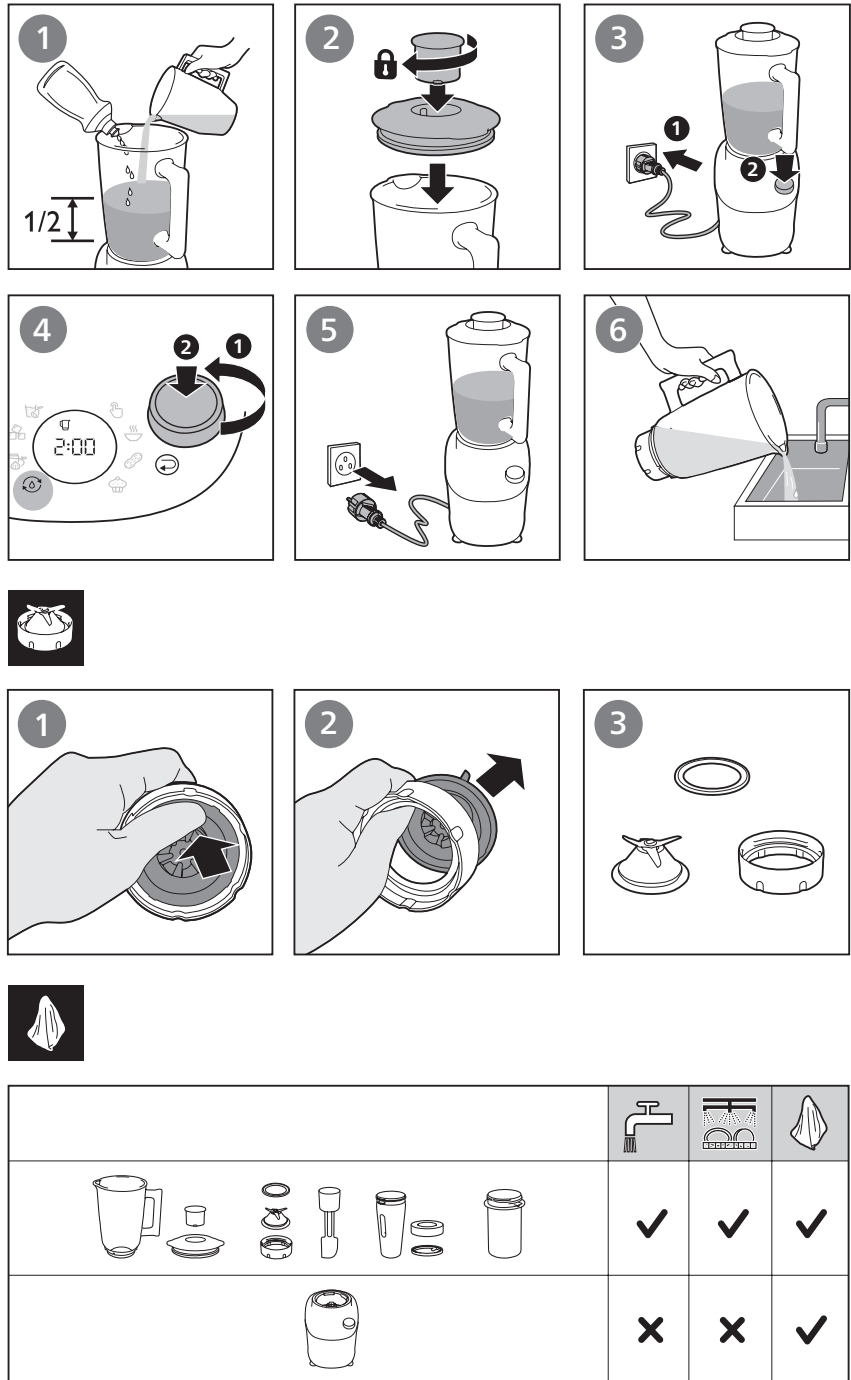
3 








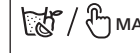
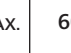


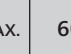


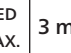

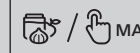
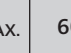


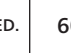

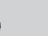

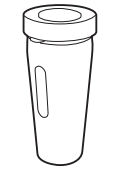


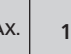

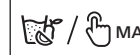
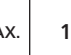



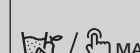
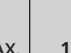




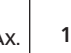

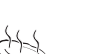

4  



5 



6 

		 (MAX)		
		1800 ml	 /  MAX.	60 sec
	 <80 °C	1250 ml	 /  MAX.	60 sec
		500 g	 /  MED. MAX.	3 mins x 2
		1800 ml	 /  MAX.	60 sec
		1800 ml	 /  MED.	60 sec
		10 x 	 / (P)	60 sec
		200 g	 /  MAX.	1 min
		200 ml	 /  MAX.	1 min
	 +  + 	200 g + 300 ml	 /  MAX.	1 min
	 + 	200 g + 250 ml	 /  MAX.	1 min
	 + 	340 g + 250 ml	 12	8 sec

## 1 Important

Read this user manual carefully before you use the appliance and save it for future reference.

### Warning

- Do not touch the sharp blades when the appliance is plugged in. If the blades get stuck, unplug the appliance before you remove the ingredients. Be careful when handling the sharp cutting blades, emptying the jar and during cleaning.
- Switch off and unplug the appliance from the power supply before:
  - Removing it from the stand, changing accessories or approaching parts that move in use.
  - Assembling, disassembling or cleaning it.
  - It is left unattended.
  - Cleaning the appliance
- If the blades get stuck, unplug the appliance before you remove the ingredients that block the blades
- Do not immerse the appliance in water or any other liquid.
- Check if the voltage indicated on the appliance corresponds to the local mains voltage before you connect the appliance.
- Do not use the appliance if power cord, the plug, protecting cover, rotating sieve or any other parts is damaged or has visible cracks. If the mains cord is damaged, you must have it replaced by Philips, a service centre authorised by Philips or similarly qualified persons in order to avoid a hazard.
- Make sure the blade unit is securely fastened and the lid is properly assembled to the blender jar before you use the appliance.
- This appliance shall not be used by children. Keep the appliance and its cord out of reach of children.
- This appliance can be used by persons with reduced physical, sensory or mental capabilities or lack of experience and knowledge if they have been given supervision or instruction concerning use of the appliance in a safe way and if they understand the hazards involved.
- Children should be supervised to ensure that they do not play with the appliance.
- Be careful if hot liquid is poured into the blender as it can be ejected out of the appliance due to a sudden steaming.
- Never assemble or disassemble the blender jar or the tumbler to the motor unit while the power is on.
- This appliance is intended for household use only.
- Read the cleaning procedure from "User Manual" before use.
- Do not operate the blender for more than 30 seconds without any ingredient. It may lead to overheating.
- Never let the appliance run unattended.

### Caution

- In order to avoid a hazard due to inadvertent resetting of the thermal cut-out, this appliance must not be supplied through an external switching device, such as a timer, or connected to a circuit that is regularly switched on and off by the utility.
- Never use any accessories or parts from other manufacturers or that Philips does not specifically recommend. If you use such accessories or parts, your guarantee becomes invalid.
- Do not exceed the maximum capacity indication on the blender jar.
- Do not exceed the maximum quantities and processing times indicated in the relevant table.
- If food sticks to the wall of the blender jar, switch off the appliance and unplug it. Then use a spatula to remove the food from the wall.
- Never fill the blender jar with ingredients hotter than 80 °C.
- Noise level: Lc = 83 dB(A).

### Blender

#### Warning

- Never reach into the blender jar with your fingers or an object while the appliance is running.


#### Caution

- To prevent spillage, do not put liquid more than the maximum capacity of the blender jar. When you process hot liquid or ingredients that tend to foam, do not put more than 1.8 liters in the blender jar.
- Do not let the appliance run for more than 3 minutes at a time. Let the appliance cool down to room temperature before you continue processing.
- Always make sure the lid is properly closed/ assembled on the jar and the measuring cup is inserted properly in the lid before you switch on the appliance.
- Do not use jar right after taking it out from dishwasher or refrigerator. Let it stay at room temperature for at least 5 min before use.

### Built-in safety lock

This feature ensures that you can only switch on the appliance if the blender jar, the mill or the tumbler is assembled on the motor unit properly. If the blender jar or the tumbler is correctly assembled, the built-in safety lock will be unlocked.

### Safety Feature

This blender is fitted with a safety feature which safeguards against excessive loads. In case of overloading, the blender automatically activates the protection and operation will stop and the overloading symbol **E01**  will light up on the control panel. If this occurs, set the rotary knob to **OFF**, unplug the appliance and allow it to cool down for

# Obsah je uzamčen

**Dokončete, prosím, proces objednávky.**

**Následně budete mít přístup k celému dokumentu.**



**Proč je dokument uzamčen? Nahněvat Vás rozhodně nechceme. Jsou k tomu dva hlavní důvody:**

- 1) Vytvořit a udržovat obsáhlou databázi návodů stojí nejen spoustu úsilí a času, ale i finanční prostředky. Dělali byste to Vy zadarmo? Ne\*. Zakoupením této služby obdržíte úplný návod a podpoříte provoz a rozvoj našich stránek. Třeba se Vám to bude ještě někdy hodit.

*\*) Možná zpočátku ano. Ale vězte, že dotovat to dlouhodobě nelze. A rozhodně na tom nezbohatneme.*

- 2) Pak jsou tady „roboti“, kteří se přiživují na naší práci a „vysávají“ výsledky našeho úsilí pro svůj prospěch. Tímto krokem se jim to snažíme překazit.

A pokud nemáte zájem, respektujeme to. Urgujte svého prodejce. A když neuspějete, rádi Vás uvidíme!