

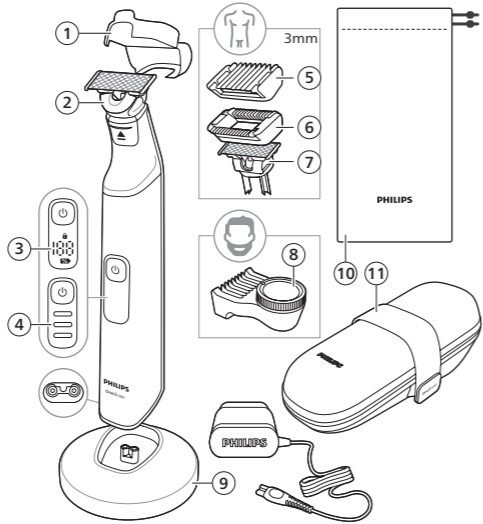
PHILIPS

OneBlade

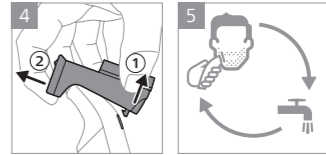
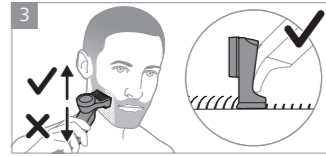
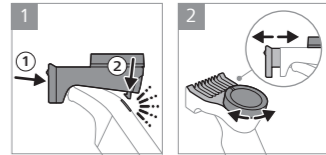
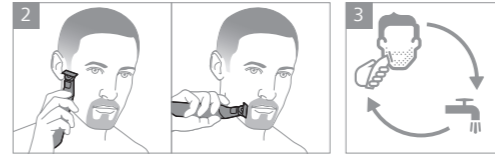
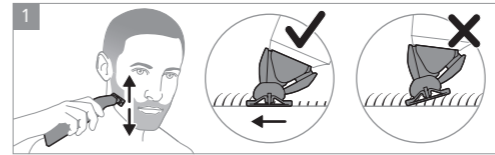
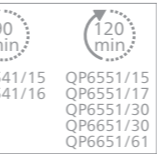
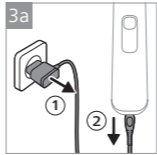
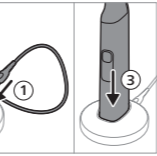
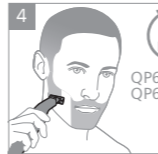
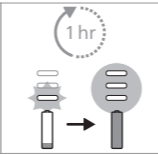
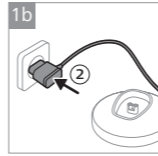
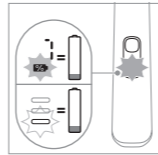
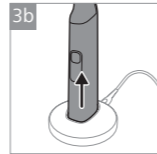
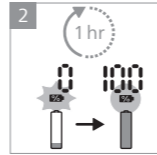
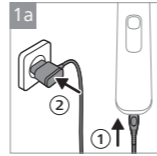
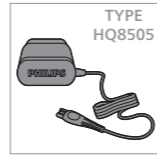
QP6541, QP6551,
QP6651

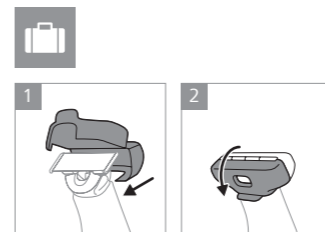
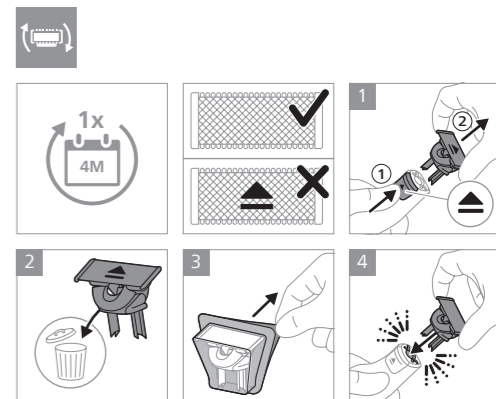
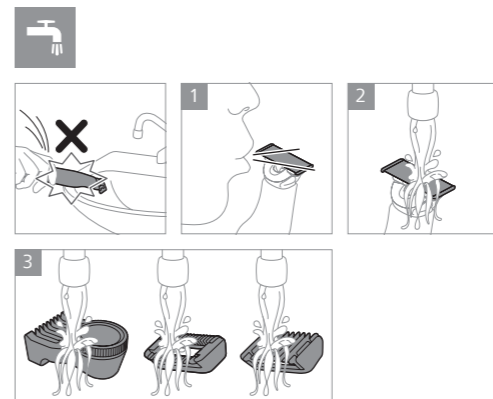
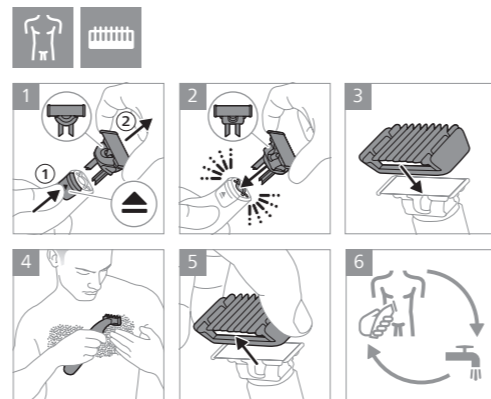
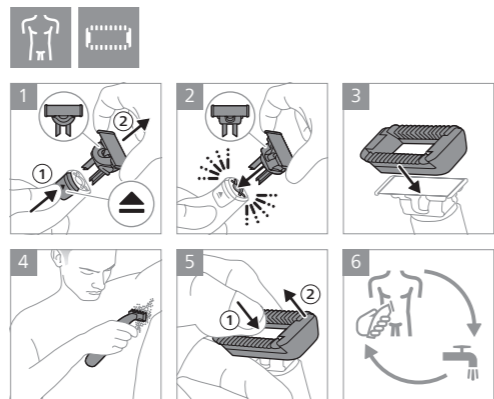


www.philips.com/support/ifu



	1	2	3	4	5	6	7	8	9	10	11
QP6541/15	✓	✓	✓		✓	✓	✓	✓			
QP6541/16	✓	✓	✓		✓	✓	✓	✓			
QP6551/15	✓	✓	✓		✓	✓	✓	✓			
QP6551/17	✓	✓	✓		✓	✓	✓	✓			
QP6551/30	✓	✓	✓		✓	✓	✓	✓			
QP6651/30	✓	✓	✓		✓	✓	✓	✓			✓
QP6651/61	✓	✓	✓		✓	✓	✓	✓			✓





© 2022 Koninklijke Philips N.V.
All rights reserved
3000.089.8751.1 (18/05/2022)

>75 % recycled paper
>75 % papier recyclé

PHILIPS



© 2021 Koninklijke Philips N.V.

All rights reserved

保留所有权利

3000.059.7570.2 (8/9/2021)

> 75% 循环再造纸

保留备用



>75 % recycled paper
>75 % papier recyclé

English

Important safety information

Only use the product for its intended purpose. Read this important information carefully before you use the product and its batteries and accessories, and save it for future reference. Misuse can lead to hazards or serious injuries. Accessories supplied may vary for different products.

Warning

- Keep the supply unit and the charging stand dry (Fig. 1).
- This appliance is waterproof (Fig. 2). It is suitable for use in the bath or shower and for cleaning under the tap. For safety reasons, the appliance can therefore only be used without cord.
- Do not modify the supply unit.
- This appliance can be used by children aged from 8 years and above and persons with reduced physical, sensory or mental capabilities or lack of experience and knowledge if they have been given supervision or instruction concerning use of the appliance in a safe way and understand the hazards involved. Children shall not play with the appliance. Cleaning and user maintenance shall not be made by children without supervision.
- Unplug the appliance before cleaning it with water.
- Do not use a damaged appliance. Replace damaged parts with new Philips parts.
- Do not use the supply unit in or near wall sockets that contain an electric air freshener to prevent irreparable damage to the supply unit.
- Because of hygiene, only one person should use the appliance.
- Only use cold or lukewarm water to clean the appliance.
- Never use compressed air, scouring pads, abrasive cleaning agents or aggressive liquids to clean the appliance.
- Only use original Philips accessories or consumables. Only use detachable supply unit HQ8505.
- Charge, use and store the product at a temperature between 5 °C and 35 °C.
- Keep product and batteries away from fire and do not expose them to direct sunlight or high temperatures.
- If the product becomes abnormally hot or smelly, changes color or if charging takes longer than usual, stop using and charging the product and contact Philips.
- Do not place products and their batteries in microwave ovens or on induction cookers.

Obsah je uzamčen

Dokončete, prosím, proces objednávky.

Následně budete mít přístup k celému dokumentu.



Proč je dokument uzamčen? Nahněvat Vás rozhodně nechceme. Jsou k tomu dva hlavní důvody:

- 1) Vytvořit a udržovat obsáhlou databázi návodů stojí nejen spoustu úsilí a času, ale i finanční prostředky. Dělali byste to Vy zadarmo? Ne*. Zakoupením této služby obdržíte úplný návod a podpoříte provoz a rozvoj našich stránek. Třeba se Vám to bude ještě někdy hodit.

**) Možná zpočátku ano. Ale vězte, že dotovat to dlouhodobě nelze. A rozhodně na tom nezbohatneme.*

- 2) Pak jsou tady „roboti“, kteří se přiživují na naší práci a „vysávají“ výsledky našeho úsilí pro svůj prospěch. Tímto krokem se jim to snažíme překazit.

A pokud nemáte zájem, respektujeme to. Urgujte svého prodejce. A když neuspějete, rádi Vás uvidíme!