

印刷封面 135mm

印刷封面 95mm

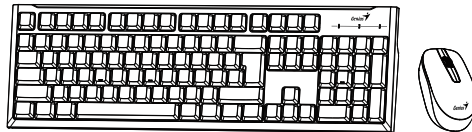


Genius web : www.geniusnet.com
OEM/ODM : www.kyecom.com

KYE Systems Corp.
#492, Sec. 5, Chongxin Rd., Sanzhong Dist.,
New Taipei City 24160, Taiwan
Tel: 886-2-2995-6645
Fax: 886-2-2995-6649
Email: sim@geniusnet.com.tw
Email: csd@geniusnet.com.tw (Tech. Support)
http://www.geniusnet.com

KM-8101

Wireless Keyboard & Mouse Combo



12030091400-B

Multi-language Quick Guide

Replace Batteries

If the mouse or keyboard does not work properly, then the batteries have lost their charge, so you need to replace them.

Warning : do not mix or use different types of batteries at the same time.

Notes on Battery Usage

When you use the battery, carefully read and strictly observe the Safety Instructions and the notes described below :

- Different battery types and surrounding temperatures may affect the battery performance.
- Avoid using batteries in extremely cold environments as low temperatures can shorten the battery life and reduce wireless device performance.
- If you are using a new rechargeable battery or rechargeable battery that has not been used for an extended period of time (batteries that pass the expiry date are exceptions) it might affect the period of time according to local regulations.
you can use this device. Therefore, to maximize their performance and lifetime, we recommend that you fully charge the batteries and discharge them for at least one complete cycle before use.
- The battery or wireless device may feel warm when using for an extended period of time. This is normal and not a malfunction.
- If you will not be using the batteries for an extended period of time, remove them from the wireless device to prevent leakage or corrosion.
- Always keep the terminals in a clean state.
- Risk of explosion if battery is replaced by an incorrect type.
- Dispose of used batteries according to local regulations.

Hardware Installation :

1. Install one AA battery into the mouse and one AA battery into the keyboard.
2. Remove the Pico receiver from the mouse and plug it into a USB port on your PC.

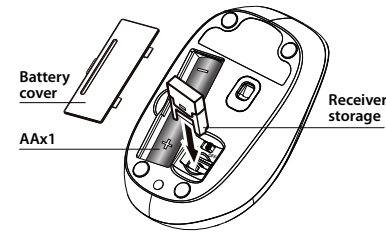


Hotkey

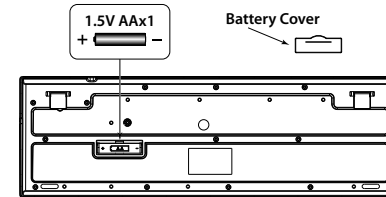
Function keys	Calculator
	Fn + F1 Media Player
	Fn + F2 Volume -
	Fn + F3 Volume +
	Fn + F4 Mute
	Fn + F5 Previous Track
	Fn + F6 Next Track
	Fn + F7 Play / Pause
	Fn + F8 Stop Playing
	Fn + F9 Web / Homepage
	Fn + F10 Email
	Fn + F11 My computer
	Fn + F12 My favorite

Figure

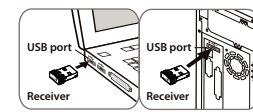
- 1 Remove the battery cover from the mouse. Install one AA battery into the mouse.



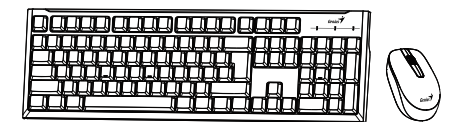
- 2 Remove the battery cover from the keyboard. Install one AA battery into the keyboard.



- 3 Plug the receiver into your computer



Connect both devices, wait 5-10 seconds and you are ready to begin

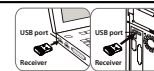


Mouse Button Assignments:

1. Left Button: Provides traditional mouse functions like click, double click and drag.
2. Magic-Roller: Scroll the button to surf the Internet and Windows documents.
3. Right Button: Provides traditional mouse right click function.

Установка оборудования :

1. Установите один элемент питания типоразмера AA в мышь и один типоразмера AA - в клавиатуру.
2. Снимите с мыши микроприемник и подключите его к гнезду USB на компьютере.



Кнопки

Функциональные клавиши	Калькулятор
	Fn + F1 Проигрыватель Windows Media
	Fn + F2 Понижение уровня звука -
	Fn + F3 Повышение уровня звука +
	Fn + F4 отключение звука
	Fn + F5 назад
	Fn + F6 далее
	Fn + F7 воспроизведение и пауза
	Fn + F8 остановка воспроизведения
	Fn + F9 веб-браузер
	Fn + F10 Электронная почта
	Fn + F11 Мой компьютер
	Fn + F12 Мое любимое

Installation der Hardware :

1. Legen Sie eine AA - Batterie in die Maus und eine AA - Batterie in die Tastatur ein.
2. Nehmen Sie den Pico - Empfänger aus der Maus und stecken Sie ihn in einen USB - Port an Ihrem PC.



Hotkey

Funktionstaste	Rechner
	Fn + F1 Media Player
	Fn + F2 Lautstärke -
	Fn + F3 Lautstärke +
	Fn + F4 Stumm
	Fn + F5 Vorheriger
	Fn + F6 Nächster
	Fn + F7 Wiedergabe / Pause
	Fn + F8 Wiedergabe stoppen
	Fn + F9 Webbrowser
	Fn + F10 E-Mail
	Fn + F11 Arbeitsplatz
	Fn + F12 Mein Favorit

Installation du matériel :

1. Insérez une pile de type AA dans la souris et une pile AA dans le clavier.
2. Retirez le récepteur Pico de la souris et branchez - le sur un port USB de votre PC. Votre PC peut être allumé ou éteint.



Touches d'accès rapide

Touche de fonction	Calculatrice
	Fn + F1 Lecteur multimédia
	Fn + F2 Volume -
	Fn + F3 Volume +
	Fn + F4 Sourdine
	Fn + F5 Précédent
	Fn + F6 Suivant
	Fn + F7 Lecture / Pause
	Fn + F8 Arrêt de la lecture
	Fn + F9 Navigateur
	Fn + F10 Email
	Fn + F11 Mon ordinateur
	Fn + F12 Mon préféré

Installazione Hardware :

1. Installare una batteria AA nel mouse e una batteria AA nella tastiera.
2. Rimuovere il ricevitore Pico dal mouse e collegarlo nell'USB port del vostro PC. Il vostro PC può essere acceso o spento.

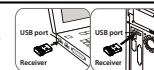


Hotkey

Tasto Funzione	Calcolatrice
	Fn + F1 Media Player
	Fn + F2 Volume -
	Fn + F3 Volume +
	Fn + F4 Muto
	Fn + F5 Precedente
	Fn + F6 Prossimo
	Fn + F7 Riproduzione / Pausa
	Fn + F8 Ferma Riproduzione
	Fn + F9 Web Browser / Home
	Fn + F10 Email
	Fn + F11 Il mio computer
	Fn + F12 Il mio preferito

Instalación de hardware :

1. Instale una batería AA en el mouse y una batería AA en el teclado.
2. Retire el receptor Pico del mouse y conéctelo al puerto USB de su computadora.



Tecla de acceso directo

Tecla de función	Calculadora
	Fn + F1 Reproductor multimedia
	Fn + F2 Volumen -
	Fn + F3 Volumen +
	Fn + F4 Silencio
	Fn + F5 Anterior
	Fn + F6 Siguiente
	Fn + F7 Reproducir / Pausar
	Fn + F8 Pausar reproducción
	Fn + F9 Navegador de Internet
	Fn + F10 Correo electrónico
	Fn + F11 Mi computadora
	Fn + F12 Mi favorito

Instalação do Hardware :

1. Instale uma bateria AA no mouse e uma bateria AA no teclado.
2. Remova o receptor Pico do mouse e conecte em uma porta USB no seu PC.



Tecla de atalho

Tecla de função	Calculadora
	Fn + F1 Tocador de Mídia
	Fn + F2 Volume -
	Fn + F3 Volume +
	Fn + F4 Mudo
	Fn + F5 Anterior
	Fn + F6 Próximo
	Fn + F7 Play / Pausa
	Fn + F8 Parar Reprodução
	Fn + F9 Navegador Web
	Fn + F10 E-mail
	Fn + F11 Meu computador
	Fn + F12 Meu favorito

Obsah je uzamčen

Dokončete, prosím, proces objednávky.

Následně budete mít přístup k celému dokumentu.



Proč je dokument uzamčen? Nahněvat Vás rozhodně nechceme. Jsou k tomu dva hlavní důvody:

- 1) Vytvořit a udržovat obsáhlou databázi návodů stojí nejen spoustu úsilí a času, ale i finanční prostředky. Dělali byste to Vy zadarmo? Ne*. Zakoupením této služby obdržíte úplný návod a podpoříte provoz a rozvoj našich stránek. Třeba se Vám to bude ještě někdy hodit.

**) Možná zpočátku ano. Ale vězte, že dotovat to dlouhodobě nelze. A rozhodně na tom nezbohatneme.*

- 2) Pak jsou tady „roboti“, kteří se přiživují na naší práci a „vysávají“ výsledky našeho úsilí pro svůj prospěch. Tímto krokem se jim to snažíme překazit.

A pokud nemáte zájem, respektujeme to. Urgujte svého prodejce. A když neuspějete, rádi Vás uvidíme!