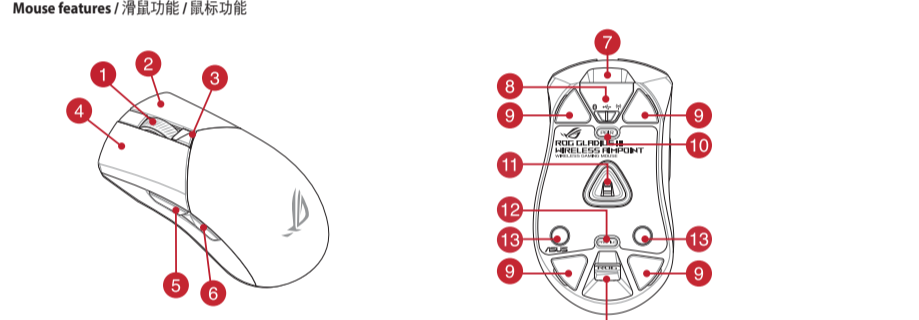


Package Contents

- * We recommend using the wireless dongle extender when using the mouse in 2.4GHz mode / 我們建議當您在無線模式下使用無線接收器時，使用無線接收器延長線。
- ** Only use the wireless dongle extender for the wireless dongle / 無線接收器延長線僅可用於連接無線接收器。

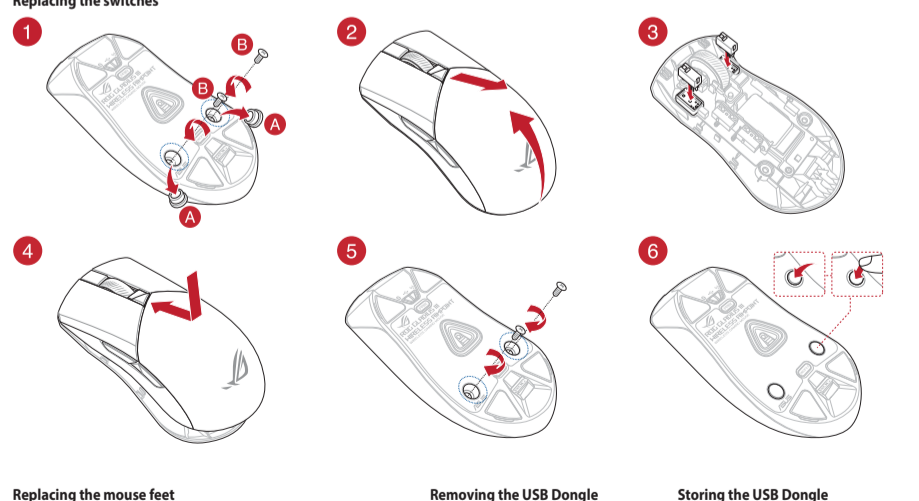


- 1 Scroll wheel / 滾輪 / 滾輪
- 2 Right-click button / 右鍵 / 右鍵
- 3 DPI button / DPI 按鈕 / DPI 按鈕
- 4 Left-click button / 左鍵 / 左鍵
- 5 Forward button / 向前按鈕 / 向前按鈕
- 6 Backward button / 向後按鈕 / 向後按鈕
- 7 USB Type-C* connector / USB Type-C* 連接埠 / USB Type-C* 接口
- 8 Connection mode switch / 連接模式切換開關 / 連接模式切換開關
- 9 Mouse feet / 滑鼠腳墊 / 鼠標腳墊
- 10 DPI button / DPI 按鈕 / DPI 按鈕
- 11 Optical sensor / 光學感測器 / 光學感測器
- 12 Profile button / 設定檔切換鈕 / 設定文件切換鈕
- 13 Rubber cover / 橡膠護蓋 / 橡膠護蓋
- 14 USB dongle / USB 無線訊號接收器 / USB 無線信號接收器

Profile switching

Press the profile button on the bottom of your gaming mouse to switch through the 5 profiles available. For more information on the profiles and the lighting effects, please refer to the table below:

Profile	Default lighting effect	Default color
Profile 1	Color cycle	Multi color
Profile 2	Breathing	Purple
Profile 3	Static	Blue
Profile 4	Breathing	Green
Profile 5	Reactive	Yellow



Updating the firmware and customization

1. Connect your gaming mouse using the bundled cable and the USB dongle to USB ports on your computer.

2. Download and install the Armoury Crate software from <https://rog.asus.com>.

3. Follow the ware instructions to update your gaming mouse firmware.

4. Customize your gaming mouse using Armoury Crate.

Connecting your gaming mouse

Using the bundled cable

Connect the bundled USB Type-C* to Type-A cable to your gaming mouse and a USB port on your computer.

Using RF wireless mode

- Connect the USB dongle to a USB port on your computer.
- Set the connection switch to the **RF 2.4GHz Wireless mode**.

Pairing Bluetooth mode for the first time

Set the connection switch to the **Bluetooth mode**.

Pairing Bluetooth mode to additional host devices (max. 3)

- Set the connection switch to the **Bluetooth mode**.
- Press and hold the **Pairing button** for 3 seconds until the LED on your gaming mouse start to blink blue. Once your gaming mouse has been successfully paired, the LED indicator on your gaming mouse will light up blue for 3 seconds.

Mise à jour du firmware et personnalisation

1. Connectez votre souris gaming grâce au câble fourni et le dongle USB à l'un des ports USB de votre ordinateur.

2. Téléchargez et installez le logiciel Armoury Crate en vous rendant sur <https://rog.asus.com>.

3. Suivez les instructions du logiciel pour mettre à jour le firmware de votre souris.

4. Personnalisez votre souris gaming via Armoury Crate.

Connecter votre souris gaming

En utilisant le câble fourni

Connectez le câble USB Type-C* vers Type-A fourni à votre souris et à un port USB de votre ordinateur.

En utilisant le mode sans fil

- Connectez le dongle USB au port USB de votre ordinateur.
- Régalez l'interrupteur de connexion sur le **mode sans fil RF 2.4G**.

Premier appariage en mode Bluetooth

Régalez l'interrupteur de connexion sur le **mode Bluetooth**.

Appariage d'appareils supplémentaires en mode Bluetooth (3 max.)

- Régalez l'interrupteur de connexion sur le **mode Bluetooth**.
- Appuyez sur le **Bouton d'appariage** et maintenez-le enfoncé pendant 3 secondes jusqu'à ce que la LED de votre souris clignote en bleu. Une fois votre souris gaming associée avec succès, la LED de votre souris gaming s'allume en bleu pendant 3 secondes.

Firmware aktualisieren und anpassen

1. Verbinden Sie Ihre Gaming Maus über das mitgelieferte Kabel und den USB-Dongle mit den USB-Anschlüssen Ihres Computers.

2. Laden Sie die Armoury Crate Software unter <https://rog.asus.com> herunter und installieren Sie sie.

3. Befolgen Sie die Anweisungen in der Software, um die Firmware Ihrer Gaming Maus zu aktualisieren.

4. Passen Sie Ihre Gaming Maus über Armoury Crate an.

Ihre Gaming Maus verbinden

Mitgeliefertem Kabel verbinden

Verbinden Sie das mitgelieferte USB-Type-C*-zu-Type-A-Kabel mit Ihrer Gaming Maus und mit einem USB-Anschluss an Ihrem Computer.

RF WLAN-Modus verwenden

1. Verbinden Sie den USB-Dongle mit einem USB-Anschluss an Ihrem Computer.

Im Bluetooth-Modus erstmals koppeln

Legen Sie den Schalter für die Verbindung auf **Bluetooth-Modus fest**.

Im Bluetooth-Modus mit zusätzlichen Host-Geräten (max. 3) koppeln

- Legen Sie den Schalter für die Verbindung auf **Bluetooth-Modus** fest.
- Halten Sie die **Kopplungstaste** drei Sekunden lang gedrückt, bis die LED an Ihrer Gaming Maus blau zu blinken beginnt. Sobald Ihre Gaming Maus erfolgreich gekoppelt wurde, leuchtet die LED-Anzeige drei Sekunden lang blau.

Aggiornamento del firmware e personalizzazione

1. Collegare il gaming mouse utilizzando Crate cavo in dotazione e l'adattatore USB alle porte USB del computer.

2. Scaricare e installare software Armoury Crate dal sito <https://rog.asus.com>.

3. Seguire le istruzioni del software per aggiornare il firmware del vostro mouse gaming.

4. Usare Armoury Crate per personalizzare Crate vostro mouse gaming.

Collegamento del mouse gaming

Uso del cavo in dotazione

Collegate il cavo USB tipo C* -> tipo A al mouse gaming e alla porta USB del vostro computer.

Uso della modalità wireless RF

- Collegare il dongle USB ad una porta USB del vostro computer.
- Impostare il selettore modalità di connessione sulla modalità **senza fili RF 2.4GHz**.

Prima associazione della modalità Bluetooth

Impostare il selettore modalità di connessione sulla **modalità Bluetooth**.

Associazione della modalità Bluetooth a dispositivi host aggiuntivi (max.3)

- Impostare il selettore modalità di connessione sulla **modalità Bluetooth**.
- Premete e tenete premuto il **Tasto di associazione** per 3 secondi, il LED presente sul mouse gaming lampeggerà di colore blu. Ad associazione avvenuta il LED del mouse gaming si accende di una luce blu fissa per 3 secondi.

Actualización del firmware y personalización

1. Conecte el ratón para juegos con el cable incluido y la llave USB a los puertos USB de su PC.

2. Descargue e instale el software Armoury Crate desde <https://rog.asus.com>.

3. Siga las instrucciones de software para actualizar el firmware del ratón para juegos.

4. Personalice el ratón para juegos mediante Armoury Crate.

Conectar el ratón para juegos

Usar el cable incluido

Conecte el cable USB Type-C* a Tipo-A incluido al ratón para juegos y a un puerto USB de su PC.

Usar el modo inalámbrico de RF

- Conecte la llave USB integrada al puerto USB del equipo.
- Establezca el conmutador de conexión en el **modo inalámbrico de 2.4 GHz de RF**.

Asociar el modo Bluetooth por primera vez

Establezca el conmutador de conexión en el **modo de Bluetooth**.

Asociar el modo Bluetooth a dispositivos host adicionales (3 como máximo)

- Establezca el conmutador de conexión en el **modo de Bluetooth**.
- Presione sin soltar el **botón de asociación** durante 3 segundos hasta que LED del ratón para juegos comiencen a parpadear en azul. Una vez que el ratón para juegos se haya asociado correctamente, el indicador LED de dicho ratón se iluminará en verde durante 3 segundos.

Actualization of the firmware and personalization

1. Connect the mouse for games with the included cable and the USB key to the USB ports of your PC.

2. Download and install the software Armoury Crate from <https://rog.asus.com>.

3. Follow the instructions of software to update the firmware of the mouse for games.

4. Personalize the mouse for games using Armoury Crate.

Connect the mouse for games

Use the included cable

Connect the included USB Type-C* to Type-A cable to the mouse for games and a USB port of your PC.

Use the RF wireless mode

- Connect the integrated USB key to the USB port of the device.
- Set the connection switch to the **RF wireless mode of 2.4 GHz**.

Associate the Bluetooth mode for the first time

Set the connection switch to the **Bluetooth mode**.

Associate the Bluetooth mode to additional host devices (3 as maximum)

- Set the connection switch to the **Bluetooth mode**.
- Press the **association button** without releasing for 3 seconds until the LED of the mouse for games starts to blink blue. Once the mouse for games is successfully associated, the LED indicator of the mouse for games will light up green for 3 seconds.

Actualization of the firmware and personalization

1. Connect the mouse for games with the included cable and the USB key to the USB ports of your PC.

2. Download and install the software Armoury Crate from <https://rog.asus.com>.

3. Follow the instructions of software to update the firmware of the mouse for games.

4. Personalize the mouse for games using Armoury Crate.

Connect the mouse for games

Use the included cable

Connect the included USB Type-C* to Type-A cable to the mouse for games and a USB port of your PC.

Use the RF wireless mode

- Connect the integrated USB key to the USB port of the device.
- Set the connection switch to the **RF wireless mode of 2.4 GHz**.

Associate the Bluetooth mode for the first time

Set the connection switch to the **Bluetooth mode**.

Associate the Bluetooth mode to additional host devices (3 as maximum)

- Set the connection switch to the **Bluetooth mode**.
- Press the **association button** without releasing for 3 seconds until the LED of the mouse for games starts to blink blue. Once the mouse for games is successfully associated, the LED indicator of the mouse for games will light up green for 3 seconds.

Actualization of the firmware and personalization

1. Connect the mouse for games with the included cable and the USB key to the USB ports of your PC.

2. Download and install the software Armoury Crate from <https://rog.asus.com>.

3. Follow the instructions of software to update the firmware of the mouse for games.

4. Personalize the mouse for games using Armoury Crate.

Connect the mouse for games

Use the included cable

Connect the included USB Type-C* to Type-A cable to the mouse for games and a USB port of your PC.

Use the RF wireless mode

- Connect the integrated USB key to the USB port of the device.
- Set the connection switch to the **RF wireless mode of 2.4 GHz**.

Associate the Bluetooth mode for the first time

Set the connection switch to the **Bluetooth mode**.

Associate the Bluetooth mode to additional host devices (3 as maximum)

- Set the connection switch to the **Bluetooth mode**.
- Press the **association button** without releasing for 3 seconds until the LED of the mouse for games starts to blink blue. Once the mouse for games is successfully associated, the LED indicator of the mouse for games will light up green for 3 seconds.

Actualization of the firmware and personalization

1. Connect the mouse for games with the included cable and the USB key to the USB ports of your PC.

2. Download and install the software Armoury Crate from <https://rog.asus.com>.

3. Follow the instructions of software to update the firmware of the mouse for games.

4. Personalize the mouse for games using Armoury Crate.

Connect the mouse for games

Use the included cable

Connect the included USB Type-C* to Type-A cable to the mouse for games and a USB port of your PC.

Use the RF wireless mode

- Connect the integrated USB key to the USB port of the device.
- Set the connection switch to the **RF wireless mode of 2.4 GHz**.

Associate the Bluetooth mode for the first time

Set the connection switch to the **Bluetooth mode**.

Associate the Bluetooth mode to additional host devices (3 as maximum)

- Set the connection switch to the **Bluetooth mode**.
- Press the **association button** without releasing for 3 seconds until the LED of the mouse for games starts to blink blue. Once the mouse for games is successfully associated, the LED indicator of the mouse for games will light up green for 3 seconds.

Actualization of the firmware and personalization

1. Connect the mouse for games with the included cable and the USB key to the USB ports of your PC.

2. Download and install the software Armoury Crate from <https://rog.asus.com>.

3. Follow the instructions of software to update the firmware of the mouse for games.

4. Personalize the mouse for games using Armoury Crate.

Connect the mouse for games

Use the included cable

Connect the included USB Type-C* to Type-A cable to the mouse for games and a USB port of your PC.

Use the RF wireless mode

- Connect the integrated USB key to the USB port of the device.
- Set the connection switch to the **RF wireless mode of 2.4 GHz**.

Associate the Bluetooth mode for the first time

Set the connection switch to the **Bluetooth mode**.

Associate the Bluetooth mode to additional host devices (3 as maximum)

- Set the connection switch to the **Bluetooth mode**.
- Press the **association button** without releasing for 3 seconds until the LED of the mouse for games starts to blink blue. Once the mouse for games is successfully associated, the LED indicator of the mouse for games will light up green for 3 seconds.

Actualization of the firmware and personalization

1. Connect the mouse for games with the included cable and the USB key to the USB ports of your PC.

2. Download and install the software Armoury Crate from <https://rog.asus.com>.

3. Follow the instructions of software to update the firmware of the mouse for games.

4. Personalize the mouse for games using Armoury Crate.

Connect the mouse for games

Use the included cable

Connect the included USB Type-C* to Type-A cable to the mouse for games and a USB port of your PC.

Use the RF wireless mode

- Connect the integrated USB key to the USB port of the device.
- Set the connection switch to the **RF wireless mode of 2.4 GHz**.

Associate the Bluetooth mode for the first time

Set the connection switch to the **Bluetooth mode**.

Associate the Bluetooth mode to additional host devices (3 as maximum)

- Set the connection switch to the **Bluetooth mode**.
- Press the **association button** without releasing for 3 seconds until the LED of the mouse for games starts to blink blue. Once the mouse for games is successfully associated, the LED indicator of the mouse for games will light up green for 3 seconds.

Actualization of the firmware and personalization

1. Connect the mouse for games with the included cable and the USB key to the USB ports of your PC.

2. Download and install the software Armoury Crate from <https://rog.asus.com>.

3. Follow the instructions of software to update the firmware of the mouse for games.

4. Personalize the mouse for games using Armoury Crate.

Connect the mouse for games

Use the included cable

Connect the included USB Type-C* to Type-A cable to the mouse for games and a USB port of your PC.

Use the RF wireless mode

- Connect the integrated USB key to the USB port of the device.
- Set the connection switch to the **RF wireless mode of 2.4 GHz**.

Associate the Bluetooth mode for the first time

Set the connection switch to the **Bluetooth mode**.

Associate the Bluetooth mode to additional host devices (3 as maximum)

- Set the connection switch to the **Bluetooth mode**.
- Press the **association button** without releasing for 3 seconds until the LED of the mouse for games starts to blink blue. Once the mouse for games is successfully associated, the LED indicator of the mouse for games will light up green for 3 seconds.

Actualization of the firmware and personalization

1. Connect the mouse for games with the included cable and the USB key to the USB ports of your PC.

2. Download and install the software Armoury Crate from <https://rog.asus.com>.

3. Follow the instructions of software to update the firmware of the mouse for games.

4. Personalize the mouse for games using Armoury Crate.

Connect the mouse for games

Use the included cable

Connect the included USB Type-C* to Type-A cable to the mouse for games and a USB port of your PC.

Use the RF wireless mode

- Connect the integrated USB key to the USB port of the device.
- Set the connection switch to the **RF wireless mode of 2.4 GHz**.

Associate the Bluetooth mode for the first time

Set the connection switch to the **Bluetooth mode**.

Associate the Bluetooth mode to additional host devices (3 as maximum)

- Set the connection switch to the **Bluetooth mode**.
- Press the **association button** without releasing for 3 seconds until the LED of the mouse for games starts to blink blue. Once the mouse for games is successfully associated, the LED indicator of the mouse for games will light up green for 3 seconds.

Actualization of the firmware and personalization

1. Connect the mouse for games with the included cable and the USB key to the USB ports of your PC.

2. Download and install the software Armoury Crate from <https://rog.asus.com>.

3. Follow the instructions of software to update the firmware of the mouse for games.

4. Personalize the mouse for games using Armoury Crate.

Connect the mouse for games

Use the included cable

Connect the included USB Type-C* to Type-A cable to the mouse for games and a USB port of your PC.

Use the RF wireless mode

- Connect the integrated USB key to the USB port of the device.
- Set the connection switch to the **RF wireless mode of 2.4 GHz**.

Associate the Bluetooth mode for the first time

Set the connection switch to the **Bluetooth mode**.

Associate the Bluetooth mode to additional host devices (3 as maximum)

- Set the connection switch to the **Bluetooth mode**.
- Press the **association button** without releasing for 3 seconds until the LED of the mouse for games starts to blink blue. Once the mouse for games is successfully associated, the LED indicator of the mouse for games will light up green for 3 seconds.

Actualization of the firmware and personalization

1. Connect the mouse for games with the included cable and the USB key to the USB ports of your PC.

2. Download and install the software Armoury Crate from <https://rog.asus.com>.

3. Follow the instructions of software to update the firmware of the mouse for games.

4. Personalize the mouse for games using Armoury Crate.

Connect the mouse for games

Use the included cable

Connect the included USB Type-C* to Type-A cable to the mouse for games and a USB port of your PC.

Use the RF wireless mode

- Connect the integrated USB key to the USB port of the device.
- Set the connection switch to the **RF wireless mode of 2.4 GHz**.

Associate the Bluetooth mode for the first time

Set the connection switch to the **Bluetooth mode**.

Associate the Bluetooth mode to additional host devices (3 as maximum)

- Set the connection switch to the **Bluetooth mode**.
- Press the **association button** without releasing for 3 seconds until the LED of the mouse for games starts to blink blue. Once the mouse for games is successfully associated, the LED indicator of the mouse for games will light up green for 3 seconds.

Actualization of the firmware and personalization

1. Connect the mouse for games with the included cable and the USB key to the USB ports of your PC.

2. Download and install the software Armoury Crate from <https://rog.asus.com>.

3. Follow the instructions of software to update the firmware of the mouse for games.

4. Personalize the mouse for games using Armoury Crate.

Connect the mouse for games

Use the included cable

Connect the included USB Type-C* to Type-A cable to the mouse for games and a USB port of your PC.

Use the RF wireless mode

- Connect the integrated USB key to the USB port of the device.
- Set the connection switch to the **RF wireless mode of 2.4 GHz**.

Associate the Bluetooth mode for the first time

Set the connection switch to the **Bluetooth mode**.

Associate the Bluetooth mode to additional host devices (3 as maximum)

- Set the connection switch to the **Bluetooth mode**.
- Press the **association button** without releasing for 3 seconds until the LED of the mouse for games starts to blink blue. Once the mouse for games is successfully associated, the LED indicator of the mouse for games will light up green for 3 seconds.

Actualization of the firmware and personalization

1. Connect the mouse for games with the included cable and the USB key to the USB ports of your PC.

2. Download and install the software Armoury Crate from <https://rog.asus.com>.

3. Follow the instructions of software to update the firmware of the mouse for games.

4. Personalize the mouse for games using Armoury Crate.

Connect the mouse for games

Use the included cable

Connect the included USB Type-C* to Type-A cable to the mouse for games and a USB port of your PC.

Use the RF wireless mode

- Connect the integrated USB key to the USB port of the device.
- Set the connection switch to the **RF wireless mode of 2.4 GHz**.

Associate the Bluetooth mode for the first time

Set the connection switch to the **Bluetooth mode**.

Associate the Bluetooth mode to additional host devices (3 as maximum)

- Set the connection switch to the **Bluetooth mode**.
- Press the **association button** without releasing for 3 seconds until the LED of the mouse for games starts to blink blue. Once the mouse for games is successfully associated, the LED indicator of the mouse for games will light up green for 3 seconds.

Actualization of the firmware and personalization

1. Connect the mouse for games with the included cable and the USB key to the USB ports of your PC.

2. Download and install the software Armoury Crate from <https://rog.asus.com>.

3. Follow the instructions of software to update the firmware of the mouse for games.

4. Personalize the mouse for games using Armoury Crate.

Connect the mouse for games

Use the included cable

Connect the included USB Type-C* to Type-A cable to the mouse for games and a USB port of your PC.

Use the RF wireless mode

- Connect the integrated USB key to the USB port of the device.
- Set the connection switch to the **RF wireless mode of 2.4 GHz**.

Associate the Bluetooth mode for the first time

Set the connection switch to the **Bluetooth mode**.

Associate the Bluetooth mode to additional host devices (3 as maximum)

- Set the connection switch to the **Bluetooth mode**.
- Press the **association button** without releasing for 3 seconds until the LED of the mouse for games starts to blink blue. Once the mouse for games is successfully associated, the LED indicator of the mouse for games will light up green for 3 seconds.

Actualization of the firmware and personalization

1. Connect the mouse for games with the included cable and the USB key to the USB ports of your PC.

2. Download and install the software Armoury Crate from <https://rog.asus.com>.

3. Follow the instructions of software to update the firmware of the mouse for games.

4. Personalize the mouse for games using Armoury Crate.

Connect the mouse for games

Use the included cable

Connect the included USB Type-C* to Type-A cable to the mouse for games and a USB port of your PC.

Use the RF wireless mode

- Connect the integrated USB key to the USB port of the device.
- Set the connection switch to the **RF wireless mode of 2.4 GHz**.

Associate the Bluetooth mode for the first time

Set the connection switch to the **Bluetooth mode**.

Associate the Bluetooth mode to additional host devices (3 as maximum)

- Set the connection switch to the **Bluetooth mode**.
- Press the **association button** without releasing for 3 seconds until the LED of the mouse for games starts to blink blue. Once the mouse for games is successfully associated, the LED indicator of the mouse for games will light up green for 3 seconds.

Actualization of the firmware and personalization

1. Connect the mouse for games with the included cable and the USB key to the USB ports of your PC.

2. Download and install the software Armoury Crate from <https://rog.asus.com>.

3. Follow the instructions of software to update the firmware of the mouse for games.

4. Personalize the mouse for games using Armoury Crate.

Connect the mouse for games

Use the included cable

Connect the included USB Type-C* to Type-A cable to the mouse for games and a USB port of your PC.

Use the RF wireless mode

- Connect the integrated USB key to the USB port of the device.
- Set the connection switch to the **RF wireless mode of 2.4 GHz**.

Associate the Bluetooth mode for the first time

Set the connection switch to the **Bluetooth mode**.

Associate the Bluetooth mode to additional host devices (3 as maximum)

- Set the connection switch to the **Bluetooth mode**.
- Press the **association button** without releasing for 3 seconds until the LED of the mouse for games starts to blink blue. Once the mouse for games is successfully associated, the LED indicator of the mouse for games will light up green for 3 seconds.

Actualization of the firmware and personalization

1. Connect the mouse for games with the included cable and the USB key to the USB ports of your PC.

2. Download and install the software Armoury Crate from <https://rog.asus.com>.

3. Follow the instructions of software to update the firmware of the mouse for games.

4. Personalize the mouse for games using Armoury Crate.

Connect the mouse for games

Use the included cable

Connect the included USB Type-C* to Type-A cable to the mouse for games and a USB port of your PC.

Use the RF wireless mode

- Connect the integrated USB key to the USB port of the device.
- Set the connection switch to the **RF wireless mode of 2.4 GHz**.

Associate the Bluetooth mode for the first time

Set the connection switch to the **Bluetooth mode**.

Associate the Bluetooth mode to additional host devices (3 as maximum)

- Set the connection switch to the **Bluetooth mode**.
- Press the **association button** without releasing for 3 seconds until the LED of the mouse for games starts to blink blue. Once the mouse for games is successfully associated, the LED indicator of the mouse for games will light up green for 3 seconds.

Oppdaterer fastveren og tilpass

1. Koble til spillmusen med den medfølgende kabelen og USB-donglen til USB-porten på datamaskinen.

2. Last ned og installer Armoury Crate-programvaren fra <https://rog.asus.com>.

3. Følg instruksjonene i programvaren for å oppdatere fastveren til spillmusen.

4. Tilpass spillmusen ved hjelp av Armoury Crate.

Koble til spillmusen

Med den medfølgende kabelen

Koble den medfølgende USB Type-C* til Type-A-kabelen til spillmusen og en USB-port på datamaskinen.

Med trådløs RF-modus

- Koble den medfølgende USB-donglen til datamaskinens USB-port.
- Sett tilkoblingsbytteren til **RF 2.4 GHz trådløs modus**.

Par Bluetooth-modus for første gang

Sett tilkoblingsbytteren til **Bluetooth-modus**.

Par Bluetooth-modus til flere vertsheter (maks. 3)

- Sett tilkoblingsbytteren til **Bluetooth-modus**.
- Trykk og hold inne **paringsknappen** i 3 sekunder til LED-lampen på spillmusen begynner å blinke blått. Når spillmusen har blitt parret, lyser LED-indikatoren på spillmusen blått i 3 sekunder.

Oppdater fastveren og tilpass

1. Koble til spillmusen med den medfølgende kabelen og USB-donglen til USB-porten på datamaskinen.

2. Last ned og installer Armoury Crate-programvaren fra <https://rog.asus.com>.

3. Følg instruksjonene i programvaren for å oppdatere fastveren til spillmusen.

4. Tilpass spillmusen ved hjelp av Armoury Crate.

Koble til spillmusen

Med den medfølgende kabelen

Koble den medfølgende USB Type-C* til Type-A-kabelen til spillmusen og en USB-port på datamaskinen.

Med trådløs RF-modus

- Koble den medfølgende USB-donglen til datamaskinens USB-port.
- Sett tilkoblingsbytteren til **RF 2.4 GHz trådløs modus**.

Par Bluetooth-modus for første gang

Sett tilkoblingsbytteren til **Bluetooth-modus**.

Par Bluetooth-modus til flere vertsheter (maks. 3)

- Sett tilkoblingsbytteren til **Bluetooth-modus**.
- Trykk og hold inne **paringsknappen** i 3 sekunder til LED-lampen på spillmusen begynner å blinke blått. Når spillmusen har blitt parret, lyser LED-indikatoren på spillmusen blått i 3 sekunder.

Actualizowanie oprogramowania układowego i dostosowywanie

1. Podłącz dołączony kabel i moduł USB myszy do portów USB w komputerze.

2. Pobierz i zainstaluj oprogramowanie Armoury Crate ze strony <https://rog.asus.com>.

3. Wykonaj instrukcje w oprogramowaniu, aby zaktualizować oprogramowanie układowe myszy do gry.

4. Dostosuj mysz do gry za pomocą oprogramowania Armoury Crate.

Podłączenie myszy dla graczy

Podłączenie dołączanego kabla

Podłącz dołączony kabel USB Type-C* na typ A do myszy dla graczy i do portu USB w komputerze.

Korzystanie z bezprzewodowego trybu RF

- Podłącz dostarczony klucz USB do portu USB komputera.
- Ustaw przełącznik połączenia w pozycji trybu **połączenia bezprzewodowego RF 2.4G**.

Parowanie z trybu Bluetooth

Ustaw przełącznik połączenia w pozycji trybu połączenia Bluetooth.

Parowanie z dodatkowymi urządzeniami hosta (maks. 3) w trybie Bluetooth

Ustaw przełącznik połączenia w pozycji trybu połączenia Bluetooth.

Actualizacia firmvéru a prispôbenie

1. Hneu myši pripojte pomocou dodaného kábla a USB adaptéra do portov USB w počítači.

2. Z lokality <https://rog.asus.com> si previesite softwar Armoury Crate a nainstalujete si ho.

3. Podľa pokynov softwaru zaktualizujte firmvéru myši.

4. Siho myš prispôbite podľa aplikácie Armoury Crate.

Pripojenie hernej myši

Používanie dodaného kábla

Dodaný kábel USB Type-C* do Type-A zapojte do hernej myši a do portu USB v počítači.

Používanie bezdrôtového režimu RF

- Dodaný USB dongle zapojte do portu USB v počítači.
- Spínač pripojenia prepnite do **bezdrôtového režimu RF 2.4 G**.

Režim parovania cez Bluetooth po prvýkrát

Spínač pripojenia prepnite do **režimu Bluetooth**.

Režim parovania cez Bluetooth s ďalšími hosťskými zariadeniami (max. 3)

- Spínač pripojenia prepnite do **režimu Bluetooth**.
- Stlačte tlačidlo **Pairing (Parovanie)** a podržte ho stlačené na 3 sekundy, kým nezačne blikať modrou LED kontrolkou na hernej myši. Po úspešnom spárovaní hernej myši sa na nej rozsvieti modrá LED kontrolka na dobu 3 sekúnd.

Prepinanje medzi hostileškými zariadeniami s rozhraním Bluetooth

Ak chcete prepínať medzi rôznymi hostileškými zariadeniami, ku ktorým je už pripojená vaša myš, stlačte tlačidlo Pairing (Parovanie). LED kontrolka na hernej myši bude blikať 3 sekundy a zvlášť na hostileškém zariadení, ku ktorému je pripojená.

Hostilešské zariadenie BLE

Hostilešské zariadenie 1 (predvolené)	Farba efektov osvetlenia
Host 1	Red
Host 2	Purple
Host 3	Blue

Pou

Obsah je uzamčen

Dokončete, prosím, proces objednávky.

Následně budete mít přístup k celému dokumentu.



Proč je dokument uzamčen? Nahněvat Vás rozhodně nechceme. Jsou k tomu dva hlavní důvody:

- 1) Vytvořit a udržovat obsáhlou databázi návodů stojí nejen spoustu úsilí a času, ale i finanční prostředky. Dělali byste to Vy zadarmo? Ne*. Zakoupením této služby obdržíte úplný návod a podpoříte provoz a rozvoj našich stránek. Třeba se Vám to bude ještě někdy hodit.

**) Možná zpočátku ano. Ale vězte, že dotovat to dlouhodobě nelze. A rozhodně na tom nezbohatneme.*

- 2) Pak jsou tady „roboti“, kteří se přiživují na naší práci a „vysávají“ výsledky našeho úsilí pro svůj prospěch. Tímto krokem se jim to snažíme překazit.

A pokud nemáte zájem, respektujeme to. Urgujte svého prodejce. A když neuspějete, rádi Vás uvidíme!