

Bowers & Wilkins

Pi7 S2
True Wireless
Earbuds

Welcome to Bowers & Wilkins and Pi7 S2

Thank you for choosing Bowers & Wilkins. When John Bowers first established our company, he did so in the belief that imaginative design, innovative engineering and advanced technology were keys that could unlock the enjoyment of audio in the home.

Pi7 S2 are high-performance in-ear true wireless earbuds designed to deliver the highest quality mobile personal audio experience combined with the convenience of wireless operation and the serenity of active noise cancellation. This manual will tell you everything you need to know to get the most from your Pi7 S2 earbuds.

Your Pi7 S2 can play music streamed wirelessly from your mobile phone, tablet or computer via Bluetooth. Pi7 S2 can also be used for wireless telephony.

Pi7 S2 features include our latest innovations in Adaptive Noise Cancellation, Ambient Pass-Through and enhanced Wear Sensing technologies. Our latest generation noise cancellation was designed from the ground up with intelligent environment sensing capabilities, automatically selecting the type of noise cancellation best suited to your surrounding environment; its only goal is to deliver an uncompromised listening experience. Ambient Pass-Through enables external sounds, such as conversation or safety announcements, to be heard clearly without any need to remove the earbuds. The Wear Sensing feature enables Pi7 S2 to respond naturally, pausing and resuming the music simply by removing an earbud from your ear. These features can be enabled and further customised via the Bowers & Wilkins **Music** app, available for free on iOS and Android devices.

Pi7 S2 incorporates a rechargeable case. When fully charged, the charging case can provide up to 21 hours of wireless media streaming at average playback volume levels.

1. Pi7 S2 Carton Contents

Pi7 S2 True Wireless Earbuds with medium ear tips
 Charging case
 USB-C charging cable
 USB-C to 3.5 mm audio cable
 Small ear tip x2
 Large ear tip x2
 Literature pack

2. Getting to Know Your Pi7 S2

We recommend installing the Bowers & Wilkins **Music** app on your iOS or Android device. This allows you to configure your earbuds in detail and provides helpful hints and tips to make the most of your new earbuds.



[bowerswilkins.com/downloadapp](https://www.bowerswilkins.com/downloadapp)

2.1 Switching Earbuds On and Off

Pi7 S2 does not have a power control; instead, power management is automatic. Your Pi7 S2 earbuds will automatically charge when placed into the charging case and are ready for use when removed from the case.

When your earbuds are removed from the charging case and not used for 5 minutes, they will enter a power saving mode. To exit power saving mode, start using the earbuds again by connecting your paired device, streaming audio or placing the earbuds into your ears.

2.2 Earbud Controls

Each earbud has a touch-sensitive Multi-function button located on the top cap of the earbud, see Diagram 1. The Multi-function button controls are as follows:

Media Playback

Function	Action
Play or pause	Tap the Multi-function button once.
Play next track	Tap the Multi-function button twice in quick succession.
Play previous track	Tap the Multi-function button three times in quick succession.

Phone Call Functionality

Function	Action
Answer call	Tap the Multi-function button once with incoming call.
End call	When call is complete, tap the Multi-function button twice in quick succession.
Decline an incoming call	Tap the Multi-function button twice in quick succession with incoming call.

3. Intelligent Features

3.1 Adaptive Noise Cancellation

Noise cancellation is a series of advanced technologies that aid in removing undesired noise from the surrounding environment.

Pi7 S2 features our latest innovations in adaptive noise cancellation, this includes intelligent sensing. As your surroundings change, noise cancellation will automatically adapt to complement your new environment.

The noise cancellation features can be toggled on and off by pressing and holding the left (L) earbud Multi-function button for 1 second. See Diagram 2 for button location.

Auto (adaptive) noise cancellation mode can be enabled or disabled in the Bowers & Wilkins **Music** app.

Function	Action
On	Removes undesired noise from the surrounding environment
Auto	Intelligently adapts noise cancellation to best suit your current environment
Off	Turns off the noise cancellation feature

3.2 Voice Assistance

Voice Assistance on your source device is activated by pressing and holding the right (R) earbud Multi-function button for 1 second. See Diagram 2 for button location.

3.3 Ambient Pass-Through

Pi7 S2 features Ambient Pass-Through, which allows some external noise from the surrounding environment, such as safety announcements or conversations, to be heard without removing the earbuds.

Use the Bowers & Wilkins **Music** app to enable/disable Ambient Pass-Through and adjust the Ambient Pass-Through level to suit your needs.

3.4 Wear Sensors

Pi7 S2 incorporate our latest enhanced wear detection sensors in both earbuds. The sensors enable intelligent battery conservation by entering power saving mode when removed from the ears. When inserted back into the ears, Pi7 S2 automatically wakes and connects to the last connected Bluetooth device.

The sensors will also pause audio when the earbuds are removed from your ears. Playback will automatically resume when the earbuds are placed back in the ears.

The Wear Sensors can be enabled or disabled from the Bowers & Wilkins **Music** app.

Note: Take special care when wearing your earbuds. Hair or accessories trapped between your ears and the earbuds may interfere with Wear Sensor operation.

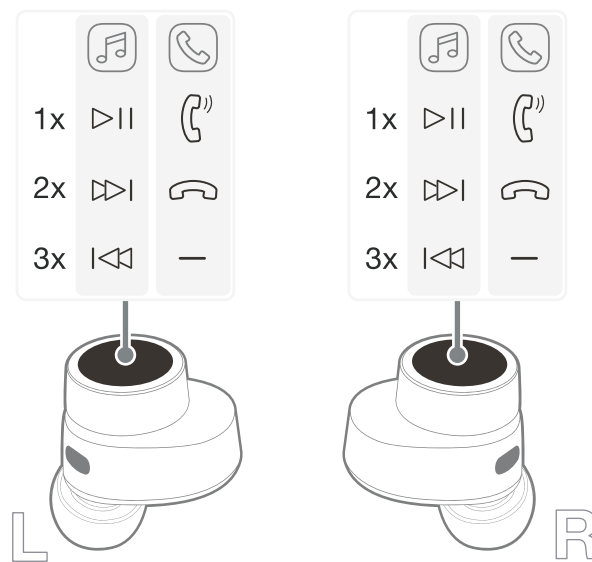


Diagram 1
Multi-function button

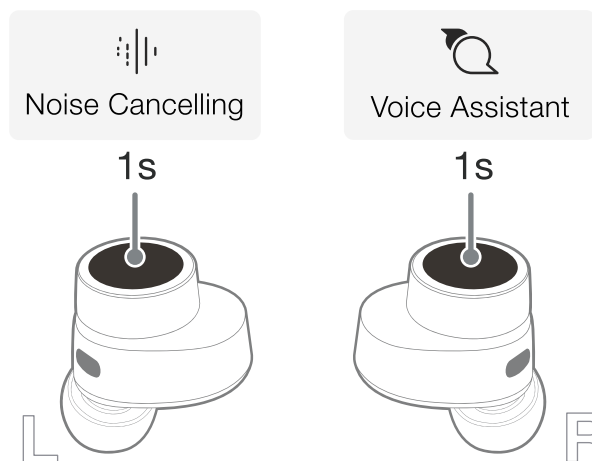


Diagram 2
Controlling intelligent features

Obsah je uzamčen

Dokončete, prosím, proces objednávky.

Následně budete mít přístup k celému dokumentu.



Proč je dokument uzamčen? Nahněvat Vás rozhodně nechceme. Jsou k tomu dva hlavní důvody:

- 1) Vytvořit a udržovat obsáhlou databázi návodů stojí nejen spoustu úsilí a času, ale i finanční prostředky. Dělali byste to Vy zadarmo? Ne*. Zakoupením této služby obdržíte úplný návod a podpoříte provoz a rozvoj našich stránek. Třeba se Vám to bude ještě někdy hodit.

**) Možná zpočátku ano. Ale vězte, že dotovat to dlouhodobě nelze. A rozhodně na tom nezbohatneme.*

- 2) Pak jsou tady „roboti“, kteří se přiživují na naší práci a „vysávají“ výsledky našeho úsilí pro svůj prospěch. Tímto krokem se jim to snažíme překazit.

A pokud nemáte zájem, respektujeme to. Urgujte svého prodejce. A když neuspějete, rádi Vás uvidíme!