

GBI002194 AKAI ACP-300(STC-3252U)MP3七国语言说明书

70克纸，贴装，白底黑字，共60页 SIZE:105X145mm

AKAI



ACP-300

Multi-media MP3 Car Player

Please read the Instruction Manual carefully before using this product.

EN - ENGLISH

PANEL FUNCTION

1  **PWR** Power On/Off

2  **/CLK / DISP**

In any mode press shortly CLK button to display the clock. Press and hold CLK button to go to clock adjustment mode. Hour digits will blink. Rotate VOLUME regulator to adjust hours. Press CLK button to go to minute adjustment; minute digits will blink. Rotate VOLUME regulator to adjust minutes.

3  

Radio receiving:

Short press to automatically tune to lower frequency radio. Long press to manually tune to lower frequency radio.

Mp3 playing:

Short press to play the previous song.

Long press to manually fast rewind.

4  

Radio receiving:

Short press to automatically tune to higher frequency radio.

Long press to manually tune to higher frequency radio.

Mp3 playing:

Short press to play the next song.

Long press to manually fast forward.

5  **1/▶||**

Radio receiving:

Short press for radio pre-stored in channel 1.

Long press to store current radio channel.

Mp3 playing:

Short press for pause/ play function.

EN - ENGLISH

6  **2/RPT**

Mp3 playing:

Short press for radio pre-stored in channel 2.

Long press to store current radio channel.

Radio receiving:

Short press for repeat play function.

7  **3/RDM**

Mp3 playing:

Short press for radio pre-stored in channel 3.

Long press to store current radio channel.

Radio receiving:

Short press for random play function.

8  **4**

Radio receiving:

Short press for radio pre-stored in channel 4.

Long press to store current radio channel.

9  **5/-10**

Radio receiving:

Short press for radio pre-stored in channel 5.

Long press to store current radio channel.

Mp3 playing:

Short press to fast backward 10 tracks.

Long press to access the previous folder.

10  **6/+10**

Radio receiving:

Short press for radio pre-stored in channel 6.

Long press to store current radio channel.

Mp3 playing:

Short press to fast forward 10 tracks.

Long press to access the next folder.

EN - ENGLISH

11 MD

Switch between Radio / MP3 Play / AUX IN/Bluetooth.

12 MU

MUTE

13 LOUD

Press LOUD button shortly and repeatedly to set loudness on or off.

14 VOLUME

Rotate the volume knob to adjust the volume.

Short press to select the following functions and rotate the knob to adjust the parameters:

VOLUME	0- - - 40
BAS	-7- - - +7
TRE	-7- - - +7
BAL	L10- - - R10
FAD	R10- - - F10
LOUD	ON- - - OFF
EQ	OFF-FLAT-ROCK-POP-CLASSIC- JAZZ
LOCAL	LOCAL-DX
STEREO	STEREO-MONO

Note: In radio mode, STEREO and LOCAL will display

15 BD

Radio receiving:

Short press to switch the radio band.

Long press to automatically search and store.

Mp3 playing:

Short press BD to enter track search mode. SCH will be displayed. Press number buttons (1-6) to input the number of needed track. Or rotate VOLUME regulator to select figures of the track number. Press VOLUME(SELECT) button to start playback of the selected track.


BLUETOOTH

1. Open the machine and use the Bluetooth on your mobile phone to search for AKA19008 connect and enter "0000"

EN - ENGLISH


2. When Bluetooth is successfully paired **BT ON** will be displayed.


Short press **1** to PLAY/PAUSE mobile phone music.

Short press  to answer the phone.

Short press  to hang up the phone.

Short press  to switch between Bluetooth and mobile phone when calling.

Long press  to call back the last call record.

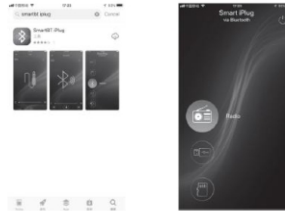
Long press  to connect/disconnect Bluetooth.

3. When Bluetooth disconnects, **BT OFF** will be displayed.

APP OPERATION

The SmartBT iplug App is the ultimate wireless controller of your Product.

You can search "Smartbt iplug" on Apple Store or Google Play Store and install into your Smart phone.



Obsah je uzamčen

Dokončete, prosím, proces objednávky.

Následně budete mít přístup k celému dokumentu.



Proč je dokument uzamčen? Nahněvat Vás rozhodně nechceme. Jsou k tomu dva hlavní důvody:

- 1) Vytvořit a udržovat obsáhlou databázi návodů stojí nejen spoustu úsilí a času, ale i finanční prostředky. Dělali byste to Vy zadarmo? Ne*. Zakoupením této služby obdržíte úplný návod a podpoříte provoz a rozvoj našich stránek. Třeba se Vám to bude ještě někdy hodit.

**) Možná zpočátku ano. Ale vězte, že dotovat to dlouhodobě nelze. A rozhodně na tom nezbohatneme.*

- 2) Pak jsou tady „roboti“, kteří se přiživují na naší práci a „vysávají“ výsledky našeho úsilí pro svůj prospěch. Tímto krokem se jim to snažíme překazit.

A pokud nemáte zájem, respektujeme to. Urgujte svého prodejce. A když neuspějete, rádi Vás uvidíme!