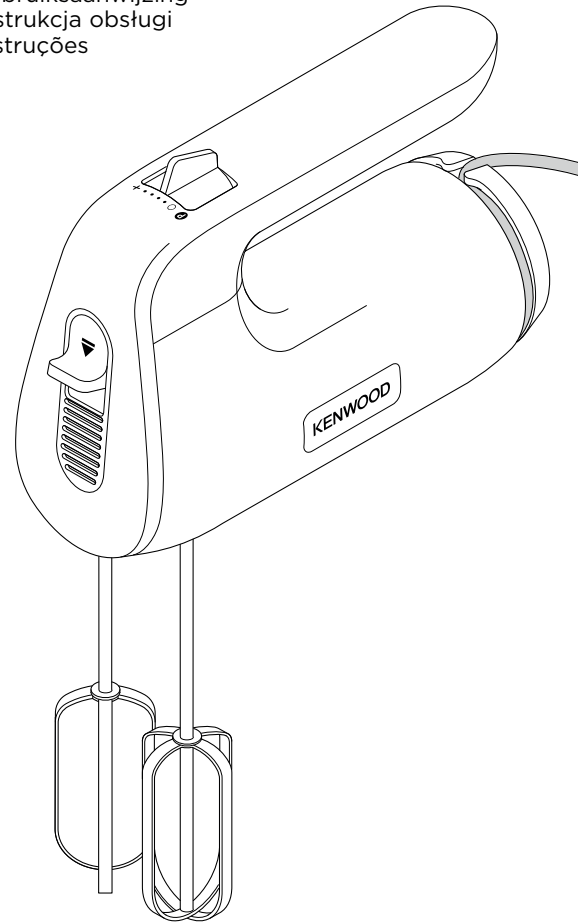


KENWOOD

TYPE: HMP50

instructions
istruzioni
instrucciones
Bedienungsanleitungen
gebruiksaanwijzing
Instrukcja obsługi
instruções



English	2 - 7
Nederlands	8 - 14
Français	15 - 21
Deutsch	22 - 29
Italiano	30 - 36
Português	37 - 44
Español	45 - 52
Dansk	53 - 58
Svenska	59 - 64
Norsk	65 - 70
Suomi	71 - 77
Türkçe	78 - 83
Česky	84 - 90
Magyar	91 - 97
Polski	98 - 105
Ελληνικά	106 - 113
Русский	114 - 121
Қазақша	122 - 129
Slovenčina	130 - 136
Українська	137 - 143
عربي	١٤٤ - ١٤٩

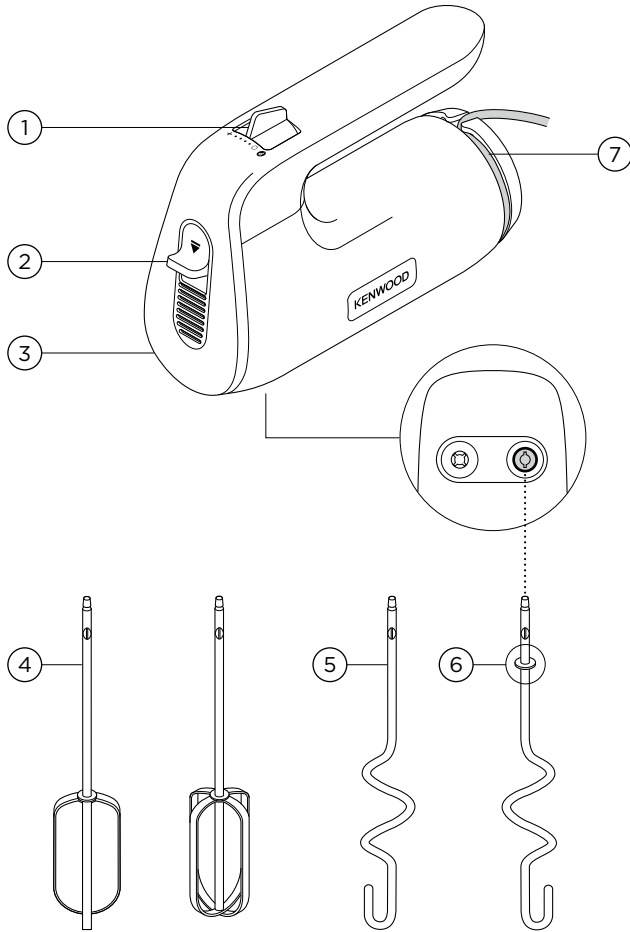
Kenwood Ltd

New Lane
Havant
Hampshire
PO9 2NH

kenwoodworld.com



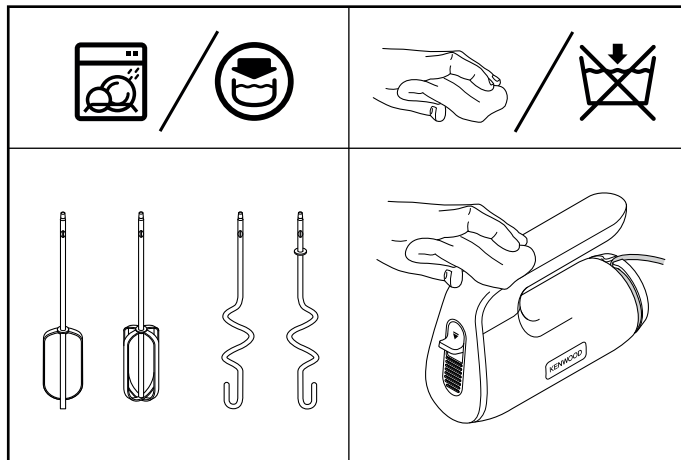
English



Safety

- Read these instructions carefully and retain for future reference.
- Remove all packaging and any labels.
- If the plug or cord is damaged it must, for safety reasons, be replaced by Kenwood or an authorised Kenwood repairer in order to avoid a hazard.
- **DO NOT process hot ingredients.**
- **Do not operate your appliance for longer than the times specified below without a rest period. Processing continuously for longer periods can damage your appliance.**

Function/Attachment	Maximum Operation Time	Rest Period Between Operations
Beaters	6 mins	Unplug the appliance and allow to cool down for 15 minutes
Kneaders Heavy cake mixes Bread doughs	3 mins	



- Never put the handmixer body in water or let the cord or plug get wet.
- Ensure the cord is fully unwound before using the handmixer.
- Keep fingers, hair, clothing and utensils away from moving parts.
- Never let the cord touch hot surfaces or hang down where a child could grab it.
- Never use a damaged handmixer. Get it checked or repaired: see 'Service and Customer Care'.

- Never use an unauthorised attachment.
- Always switch off the appliance and disconnect from the power supply, if it is left unattended, before assembling, disassembling or cleaning.
- Appliances can be used by persons with reduced physical, sensory or mental capabilities or lack of experience and knowledge if they have been given supervision or instruction concerning use of the appliance in a safe way and if they understand the hazards involved.
- Misuse of your appliance can result in injury.
- The rated power is based on the chopper attachment. Other attachments may draw less power.
- This appliance shall not be used by children. Keep the appliance and its cord out of reach of children.
- Children should be supervised to ensure that they do not play with the appliance.
- Only use the appliance for its intended domestic use. Kenwood will not accept any liability if the appliance is subject to improper use, or failure to comply with these instructions.

Cleaning

- Always switch off, unplug and remove the beaters or kneaders before cleaning.
- Never put the handmixer body in water or let the cord or plug get wet.
- Never use abrasives to clean parts.

Obsah je uzamčen

Dokončete, prosím, proces objednávky.

Následně budete mít přístup k celému dokumentu.



Proč je dokument uzamčen? Nahněvat Vás rozhodně nechceme. Jsou k tomu dva hlavní důvody:

- 1) Vytvořit a udržovat obsáhlou databázi návodů stojí nejen spoustu úsilí a času, ale i finanční prostředky. Dělali byste to Vy zadarmo? Ne*. Zakoupením této služby obdržíte úplný návod a podpoříte provoz a rozvoj našich stránek. Třeba se Vám to bude ještě někdy hodit.

**) Možná zpočátku ano. Ale vězte, že dotovat to dlouhodobě nelze. A rozhodně na tom nezbohatneme.*

- 2) Pak jsou tady „roboti“, kteří se přiživují na naší práci a „vysávají“ výsledky našeho úsilí pro svůj prospěch. Tímto krokem se jim to snažíme překazit.

A pokud nemáte zájem, respektujeme to. Urgujte svého prodejce. A když neuspějete, rádi Vás uvidíme!