

Guarantee card
Garantiekarte
Carte de garantie
Certificato di garanzia
Tarjeta de garantía
Garantiekarte
Certificado de garantia
Garantibevis
Garantibevis
Takuutodistus
Garantibevis
Certificat de garanție

Záruční list
Garancialevél
Karta Gwarancyjna
כתב אחריות
Πιστοποιητικό εγγύησης
Garanti sertifikası
Záručný list
Гаранціонна карта
Гарантійний талон
Гарантийный сертификат
شهادة الضمان
ضمانتنامه

Stamp and signature of dealer
Stempel und Unterschrift des Händlers
Cachet et signature du commerçant
Timbro e firma del rivenditore
Sello y firma del proveedor
Stempel en handtekening van de handelaar
Carimbo e firma do revendedor
Selgerens stempel og underskrift
Återförsäljarens stämpel och namnteckninge
Myyjän leima ja allekirjoitus
Forhandlerens stempel og underskrift
Eladó pecsétje és aláírása
Razítko a podpis prodávce
Tampila i semnătura vânzătorului
Pieczęć i podpis sprzedawcy
תאריך קניה
Σφραγίδα και υπογραφή του πωλητή
Saticinin mühür ve imzası
Razítko a podpis predajca
Подпис и печат на продавача
Печатка і підпис продавця
Печать и подпись продавца
ختم و توقيع البائع
مهر و امضای فروشنده

SWISS IONIC COMFORT

Type 513.01



INSTRUCTIONS FOR USE

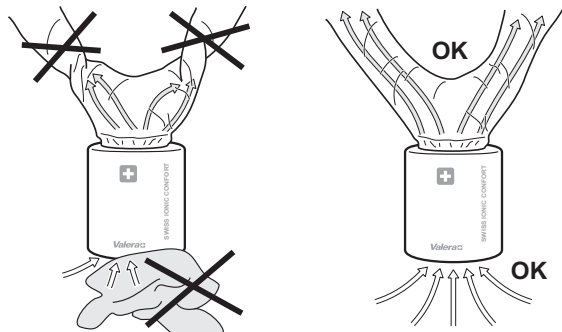
Made by Ligo Electric SA - Via Ponte Lavaggio, 9
6853 Ligonetto / Mendrisio - Switzerland
Valera is a registered trademark of Ligo Electric S.A. - Switzerland

(EN)	Hood Dryer with Ion-Generator	4
(DE)	Trockenhaube mit Ionen-Funktion	7
(FR)	Casque sèche-cheveux avec ionisateur	10
(IT)	Casco asciugacapelli con ionizzatore	13
(ES)	Casco secador de cabello con ionizador	16
(NL)	Haardroogkap met ionisator	19
(PT)	Capacete secador de cabelo com ionizador	22
(NO)	Tørkehette med ionegenerator	25
(SV)	Huvtork med luftjoniserarer	28
(FI)	Ionisaattorin sisältävä kuivaushuppu	31
(DA)	Hættehårtørret med ionisering	34
(HU)	Hajszárító bura ionizálóval	37
(CS)	Sušiči helma s ionizátorem	40
(RO)	Cască pentru uscarea părului cu ionizator	43
(PL)	Suszarka do włosów 'kask' z jonizatorem	46
(HE)	כובע לייבוש שיער עם יוניטור	49
(EL)	Κάσκα στεγνωμάτος μαλλιών με ιονιστή	52
(TR)	İyonizerli saç kurutma kaskı	55
(SK)	Helma na sušenie vlasov s ionizátorom	58
(BG)	СЕШОАР-КАЧУЛКА С ИОНИЗАТОР	61
(UK)	Шолом-сушар з іонізатором	64
(RU)	Фен-шлем с ионизатором	67
(SA)	خوذة مجفف شعر بمؤين	70
(IR)	کاسک خشکننده مو با تولیدکننده یون	75

00060707-09/16



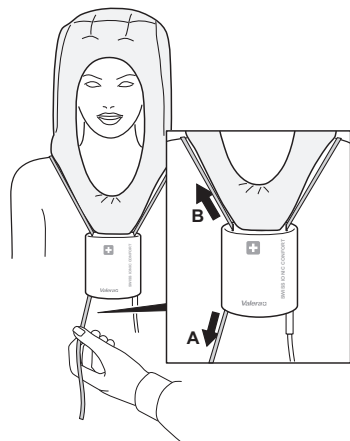
1



2



3



English


INSTRUCTIONS FOR USE - Original instructions

Type 513.01 - Hood Dryer with Ion-Generator

Please read these operating instructions carefully as they include valuable advice on safety and how to use the appliance. Look after these operating instructions carefully.

Available also on www.valera.com

SAFETY WARNINGS

- Important: In order to guarantee additional protection, it is recommended that a differential breaker with an intervention current not greater than 30 mA is installed in the electrical system which powers the appliance. For further information, contact a qualified electrician.
- Make sure the appliance is perfectly dry before use
-  **WARNING:** Do not use this appliance near bathtubs, showers, basins or other vessels containing water.
- This appliance can be used by children of 8 years and over, and by persons with limited physical, sensory or mental abilities or who lack the relevant experience and knowledge, provided they are suitably supervised or have been instructed in the safe use of the appliance and made aware of the associated risks.
- Do not allow children to play with the appliance.
- Children must not perform cleaning and maintenance procedures without supervision.
- Do not use the appliance if it is not working properly. Do not try to repair this electrical appliance yourself, contact an authorized technician instead. If the power cord is damaged, it must be replaced by the manufacturer, its service agent or similarly qualified person in order to avoid a hazard.
- When the appliance is used in a bathroom, unplug it after use since the proximity of water presents a hazard even when the appliance is switched off.
- Only connect the appliance to alternating current and check that the mains supply voltage corresponds to that indicated on the appliance.

Valera 
SWISS HAIR SPECIALISTS

Mod. Nr.

Date of purchase Kaufdatum Date d'achat Data d'acquisto Fecha de adquisición Datum aankoop Data de compra Innkjøpsdato Inkõpsdatum Ostopäivämäärä	Købsdato Eladás dátuma Datum prodeje Data cumpărării Data zakupu Satin alma tarihi כתב אחריות Παραπομπή αγοράς Κατάσταση Dátum nákuhu Дата покупки	Дата покупки تاريخ الشراء تاريخ الشراء Дата на закупуване
--	--	--

Name and full address of purchaser
Name und vollständige Anschrift des Käufers
Nom et adresse complète de l'acheteur
Nome e indirizzo completo dell'acquirente
Nombre y dirección completa del comprador
Naam en adres van de consument
Nome e endereço do cliente
Kjøperens fullstendige navn og adresse
Köparens namn och fullständig adress
Ostajan nimi ja täydellinen osoite
Køberens fulde navn og adresse
Vevó neve és teljes címe
Jméno a adresa zákazníka
Numele i adresa completă a cumpărătorului
Nazwisko oraz pełny adres kupującego

תאריך קניה
Όνομα, επώνυμο και πλήρης διεύθυνση του αγοραστή
Alicinin tam ismi ve adresi
Meno a celá adresa kupujúceho/zákazníka
Име, фамилия и пълен адрес на купувача
Прізвище, ім'я, по батькові і повна адреса покупця
Фамилия/имя и полный адрес покупателя
اسم المشتري وعنوانه الكامل
نام و نشانی کامل خریدار

- **Never immerse the appliance in water or other liquids.**
- **Do not put the appliance down where it could fall into water or other liquids.**
- **Do not try to pull any electrical appliance out when it has fallen into water – disconnect the plug from the power socket immediately.**
- Always switch the appliance off before putting it down.
- After use always switch the appliance off and remove the plug from the power socket. Do not pull on the wire to remove the plug from the power socket.
- Do not pull the plug out of the power socket with wet hands.
- When using the appliance make sure the air intake and exhaust grilles are never obstructed. (fig.1)
- Before wearing and using the appliance, check that the air channels in the hood are correctly positioned and are not bent or twisted. (fig.1)
- Always allow the appliance to cool before putting it away and never wrap the cord around it.
- The elements used to pack the appliance (plastic bags, cardboard box, etc.) must be kept out of reach of children as they are a potential hazard.
- The appliance must only be used for the purposes for which it is expressly intended. Any other use is to be considered improper and therefore dangerous. The manufacturer shall not be held responsible for damage or injury deriving from improper or incorrect use.
- Do not use hair spray while the appliance is running.
- Do not remove the appliance from the head while it is switched on: always set the switch to 0 first.

Important

This appliance conforms to the safety regulations regarding electrical appliances.

This appliance has a safety cut-out which will operate in case of overheating. The dryer will re-set itself after being left to cool for a few minutes, but please check air inlet and outlet grilles are perfectly clean before continuing to use the dryer.

USE

SWITCH POSITION

0 = off

C = COOL / warm air

1 = hot air / slow speed

2 = very hot air / fast speed

Obsah je uzamčen

Dokončete, prosím, proces objednávky.

Následně budete mít přístup k celému dokumentu.



Proč je dokument uzamčen? Nahněvat Vás rozhodně nechceme. Jsou k tomu dva hlavní důvody:

- 1) Vytvořit a udržovat obsáhlou databázi návodů stojí nejen spoustu úsilí a času, ale i finanční prostředky. Dělali byste to Vy zadarmo? Ne*. Zakoupením této služby obdržíte úplný návod a podpoříte provoz a rozvoj našich stránek. Třeba se Vám to bude ještě někdy hodit.

**) Možná zpočátku ano. Ale vězte, že dotovat to dlouhodobě nelze. A rozhodně na tom nezbohatneme.*

- 2) Pak jsou tady „roboti“, kteří se přiživují na naší práci a „vysávají“ výsledky našeho úsilí pro svůj prospěch. Tímto krokem se jim to snažíme překazit.

A pokud nemáte zájem, respektujeme to. Urgujte svého prodejce. A když neuspějete, rádi Vás uvidíme!