

**Oral-B®**

**PRO** powered by **BRAUN**

**TRIZONE**  
**500-5000**



Charger Type 3757  
Handle Type 3756



**GB** 0 800 731 1792

**IE** 1 800 509 448

**PL** 801 127 286  
801 1 BRAUN

**CZ** 221 804 335

**SK** 02/5710 1135

**HU** (06-1) 451-1256

**IL** 1-800-666-775

**Internet:**

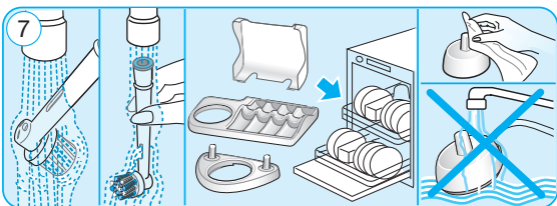
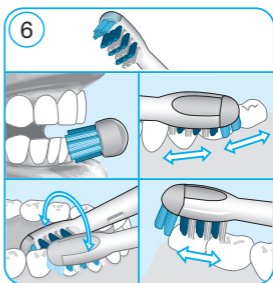
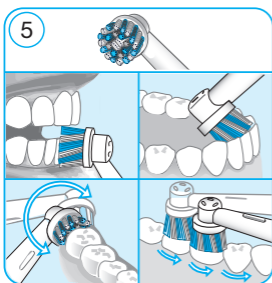
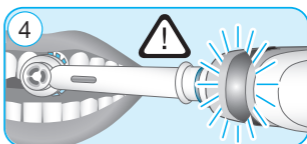
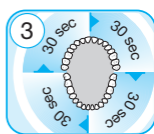
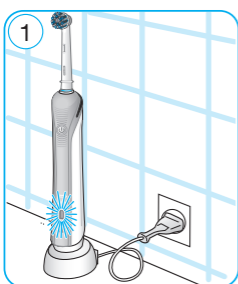
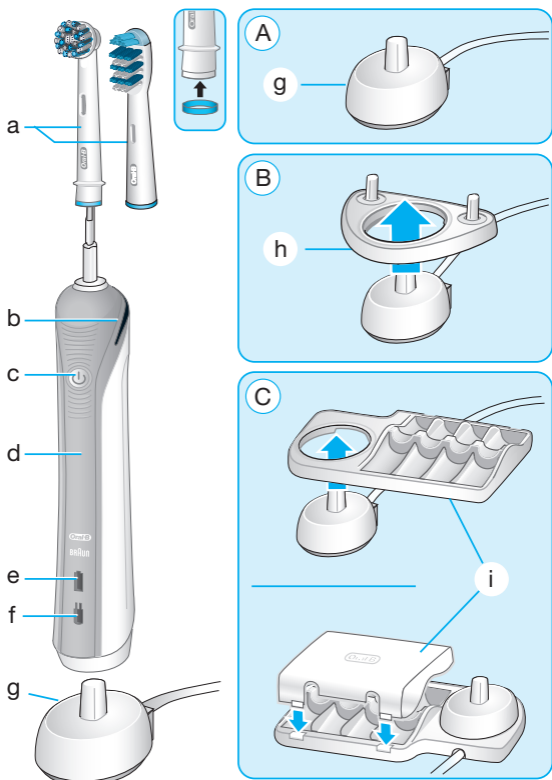
[www.oralb.com](http://www.oralb.com)

[www.braun.com](http://www.braun.com)

[www.service.braun.com](http://www.service.braun.com)

Braun GmbH  
Frankfurter Straße 145  
61476 Kronberg/Germany

**Charger type 3757**  
**Handle type 3756**



## English

Your Oral-B® toothbrush has been carefully designed to offer you and your family a unique brushing experience that is both safe and effective.

### IMPORTANT

- Periodically check the cord for damage. If cord is damaged, take the charging unit to an Oral-B Service Centre. A damaged or non-functioning unit should no longer be used. Do not modify or repair the product. This may cause fire, electric shock or injury.
- This product is not intended for children 3 years and under. Children from 3 to 14 years and persons with reduced physical, sensory or mental capabilities or lack of experience and knowledge can use the toothbrush, if they have been given supervision or instruction concerning use of the appliance in a safe way and understand the hazards involved.
- Cleaning and maintenance shall not be performed by children.
- Children shall not play with the appliance.

- Use this product only for its intended use as described in this manual. Do not use attachments which are not recommended by the manufacturer.

#### WARNING

- If the product is dropped, the brush head should be replaced before the next use even if no damage is visible.
- Do not place the charger in water or liquid or store where it can fall or be pulled into a tub or sink. Do not reach for it when fallen into water. Unplug immediately.
- Do not disassemble the product except when disposing of the battery. When taking out the battery for disposal of the unit, use caution not to short the positive (+) and negative (-) terminals.
- When unplugging, always hold the power plug instead of the cord. Do not touch the power plug with wet hands. This can cause an electric shock.
- If you are undergoing treatment for any oral care condition, consult your dental professional prior to use.
- This toothbrush is a personal care device and is not intended for use on multiple patients in a dental practice or institution.
- Replace brush (head) every 3 months or sooner if brush head becomes worn.

#### Description

- a Brush head
- b Pressure sensor light (depending on model)
- c On/off button (mode selection)
- d Handle
- e Charge indicator light
- f Low charge indicator light
- g Basic charger
- h Brush head holder (depending on model)
- i Brush head compartment with protective cover (depending on model)

#### Specifications

For voltage specifications refer to the bottom of the charging unit.

Noise level: ≤65 dB (A)

#### Connecting and charging

Your toothbrush has a waterproof handle, is electrically safe and designed for use in the bathroom.

- Plug the basic charger (g) or the assembled charging unit (picture B/C) into an electrical outlet and place the toothbrush handle (d) on the charging unit.
- The green charge indicator light (e) flashes while the handle is being charged. Once it is fully charged, the light turns off. A full charge can take up to 22 hours and enables up to seven days of regular brushing (twice a day, 2 minutes) (picture 1).  
Note: After deep discharge, the green light might not flash immediately; it can take up to 10–15 minutes.
- If the rechargeable battery is low the red low charge indicator light (f) is flashing for some seconds when turning your toothbrush on/off.
- For everyday use, the toothbrush handle can be stored on the charging unit to maintain it at full power. Overcharging is impossible.
- To maintain the maximum capacity of the rechargeable battery, unplug the charging unit and fully discharge the handle with regular use at least every 6 months.

#### Using your toothbrush

##### Brushing technique

Wet brush head and apply any kind of toothpaste. To avoid splashing, guide the brush head to your teeth before switching on the appliance (picture 2). When brushing your teeth with one of the Oral-B oscillating-rotating brush heads guide the brush head slowly from tooth to tooth, spending a few seconds on each tooth surface (picture 5). When using the Oral-B «TriZone» brush head place the toothbrush bristles against the teeth at a slight angle towards the gumline. Apply light pressure and start brushing in back and forth motions, just like you would do with a manual toothbrush (picture 6).

With any brush head start brushing the outsides, then the insides and finally the chewing surfaces. Brush all four quadrants of your mouth equally. Do not press too hard, simply let the brush do all the work. You may also consult your dentist or dental hygienist about the right technique for you.

In the first days of using any electric toothbrush, your gums may bleed slightly. In general, bleeding should stop after a few days. Should it persist after 2 weeks, please consult your dentist or dental hygienist. If you have sensitive teeth and/or gums, Oral-B recommends using the «Sensitive» mode (depending on model) (optional in combination with an Oral-B «Sensitive» brush head).

##### Brushing modes (depending on model)

Model 500-1000	Model 800	Model 2000	Model 3000	Model 4000-5000	Brushing modes (with handle type number 3756)
✓	✓	✓	✓	✓	<b>Daily Clean</b> – Standard for daily mouth cleaning
	✓		✓	✓	<b>Sensitive</b> – Gentle, yet thorough cleaning for sensitive areas
				✓	<b>Whitening</b> – Exceptional polishing for occasional or everyday use
		✓	✓	✓	<b>Gum Care</b> – Gentle massage of gums

How to switch between modes:

Your toothbrush automatically starts in «Daily Clean» mode. To switch to other modes, successively press the on/off button. If you wish to turn off your toothbrush from e.g. «Sensitive» mode, push and hold down the on/off button until the motor stops.

##### Pressure sensor

Helping protect your teeth and gums from hard brushing, your toothbrush has a pressure control feature installed. If too much pressure is applied, the red pressure sensor light (b) will light up, reminding you to reduce pressure (picture 4) (depending on model). In addition the movement of the brush head will continue but its pulsation will stop and you will also hear a different sound while brushing. Periodically check the operation of the pressure sensor by pressing lightly on the brush head during use.

##### Professional Timer

A short stuttering sound at 30-second intervals reminds you to brush equally all four quadrants of your mouth (picture 3). A long stuttering sound indicates the end of the professionally recommended 2-minute brushing time. The elapsed brushing time is memorised even when the handle is briefly switched off during brushing. When pausing longer than 30 seconds the timer resets.

#### Brush heads

Our **oscillating-rotating brush heads** can be used for tooth-by-tooth precision cleaning.

# Obsah je uzamčen

**Dokončete, prosím, proces objednávky.**

**Následně budete mít přístup k celému dokumentu.**



**Proč je dokument uzamčen? Nahněvat Vás rozhodně nechceme. Jsou k tomu dva hlavní důvody:**

- 1) Vytvořit a udržovat obsáhlou databázi návodů stojí nejen spoustu úsilí a času, ale i finanční prostředky. Dělali byste to Vy zadarmo? Ne\*. Zakoupením této služby obdržíte úplný návod a podpoříte provoz a rozvoj našich stránek. Třeba se Vám to bude ještě někdy hodit.

*\*) Možná zpočátku ano. Ale vězte, že dotovat to dlouhodobě nelze. A rozhodně na tom nezbohatneme.*

- 2) Pak jsou tady „roboti“, kteří se přiživují na naší práci a „vysávají“ výsledky našeho úsilí pro svůj prospěch. Tímto krokem se jim to snažíme překazit.

A pokud nemáte zájem, respektujeme to. Urgujte svého prodejce. A když neuspějete, rádi Vás uvidíme!