

Select a language:

EN - English

DE - Deutsch

FR - Français

ES - Español

CZ - Český

PL - Polski

SK - Slovenský

RU - Русский

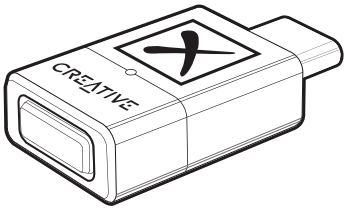
JP - 日本語

CS - 简体中文

CT - 繁體中文

KO - 한국어

CREATIVE® BT-W5



Smart *Bluetooth*® 5.3 Audio Transmitter with aptX™ Adaptive

QUICK START GUIDE
使用产品前请阅读使用说明
MODEL NO / 型号 / 型號: SA0180



**MULTI-LANGUAGE QUICK START GUIDE
DOWNLOAD**
creative.com/support/BTW5

- [EN] MULTI-LANGUAGE QUICK START GUIDE DOWNLOAD
- [FR] TÉLÉCHARGEMENT DU GUIDE DE DÉMARRAGE RAPIDE MULTILINGUES
- [DE] MEHRSPRACHIGE SCHNELLSTARTANLEITUNG HERUNTERLADEN
- [ES] DESCARGA DE LA GUÍA DE INICIO RÁPIDO EN MÚLTIPLES IDIOMAS
- [IT] DOWNLOAD DELLA GUIDA DI AVVIO RAPIDO MULTILINGUA
- [NL] MEERTALIGE SNELSTARTGIDS DOWNLOAD
- [RU] МНОГОЯЗЫЧНОЕ КРАТКОЕ РУКОВОДСТВО ЗАГРУЗИТЬ
- [PL] POBIERZ PRZEWODNIK SZYBKIEGO STARTU W WIELU JĘZYKU
- [CZ] STÁHNOUT VÍCEJAZYKOVÝ RYCHLÝ NÁVOD K POUŽITÍ
- [SK] STIAHNUŤ SI RÝCHLY NÁVOD NA ŠTARTOVANIE VIAC JAZYKOV
- [JP] 多言語クイックスタートガイドのダウンロード
- [CS] 下载多语言快速入门指南
- [CT] 下载多语言快速入门指南
- [KO] 다국어 빠른 시작 가이드 다운로드
- [NO] NEDLASTING AV HURTIGSTARTVEILEDNING FOR FLERE SPRÅK
- [FI] MONIKIELINEN PIKA-ALOITUSOPPAAN LATAUS
- [SV] FLERSPRÅKIG SNABBSTARTSGUIDE LADDA NER
- [DA] DOWNLOAD AF HURTIG STARTVEJLEDNING PÅ FLERE SPROG

REGISTER YOUR PRODUCT
creative.com/register

TECHNICAL SUPPORT
creative.com/support

OVERVIEW

- 1 LED Indicator
- 2 *Bluetooth*® Button

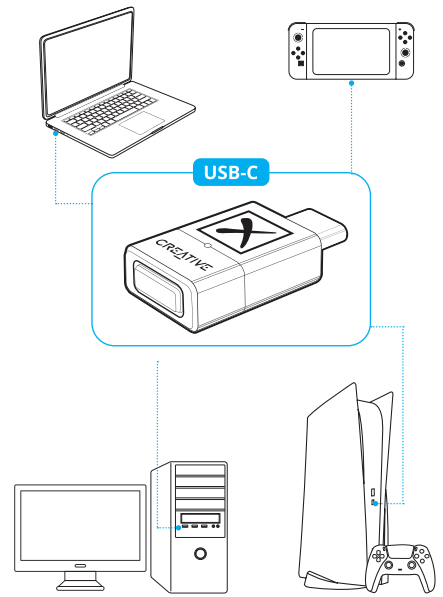
BLUETOOTH PAIRING: NEW DEVICE

Creative BT-W5 will automatically enter *Bluetooth* pairing mode right out the box. Press and hold the button for 2s to manually trigger *Bluetooth* pairing.

| Button | Action | LED Indicator |
|--------|-------------------------------------|---------------------------------|
| 2s | Enter <i>Bluetooth</i> Pairing Mode | Flashing Blue |
| N / A | <i>Bluetooth</i> Paired | Supported Codec's LED Indicator |

Creative BT-W5 supports up to four paired devices at a time. To pair to a new device, repeat the steps above. Creative BT-W5 will remember paired devices 1-4 based on the sequence of first-time pairing.

CONNECTIVITY



Note: USB-C to USB-A converter not included

BLUETOOTH PAIRING: CONNECTING TO PAIRED DEVICES

The *Bluetooth* button also works as a multifunction button, allowing you to switch connection between paired devices. Press the button once to switch between paired devices.

| Button | Action | LED Indicator |
|--------|--|--------------------|
| X1 | Switch Connection Between Paired Devices | Flashing White |
| x1 | Connecting to Device 1 | x2 |
| x2 | Connecting to Device 2 | x3 |
| x3 | Connecting to Device 3 | x4 |
| x4 | Connecting to Device 4 | |

When switching between paired devices, the LED indicator will flash white a number of times to indicate the paired device's sequence.

If no devices are available to pair when the *Bluetooth* button is pressed, Creative BT-W5 will remain in search mode and alternate between paired devices for 20s each time based on their sequence while the LED indicator flashes white.

HFP MODE

Hands-free Profile (HFP) mode allows wireless communication on your *Bluetooth*-enabled devices with built-in microphone when the audio transmitter is connected and in use.

When Creative BT-W5 is removed and plugged into another USB port on a separate device, it will exit HFP mode and return to its usual function.

| Button | Action | LED Indicator |
|--------|----------------|-----------------|
| x2 | Enter HFP Mode | Solid Red |
| x1 | Exit HFP Mode | Last Codec Used |

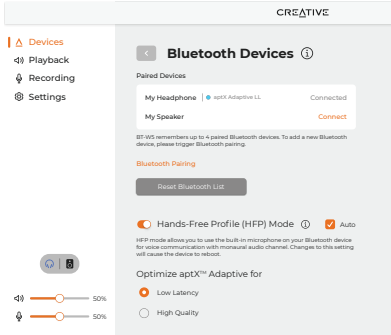
AUDIO CODEC

Creative BT-W5 supports aptX Adaptive, aptX HD, aptX, SBC codecs, and will automatically select the best supported codec based on the connected audio device.

Creative BT-W5 supports both aptX Adaptive High Quality and aptX Low Latency. Only one mode can be selected at a time. These mode are selectable via the Creative app, downloadable on creative.com/support/BTWS.

| Audio Codec | LED Indicator |
|-----------------------------------|----------------|
| aptX Adaptive High Quality | Solid Purple ● |
| aptX Adaptive Low Latency | Solid Cyan ● |
| aptX HD | Solid Gold ● |
| aptX | Solid Green ● |
| SBC | Solid Blue ● |

Selecting aptX Adaptive High Quality / Low Latency on the Creative app



Upon connecting Creative BT-W5 to your PC, the Creative app will automatically detect the device.

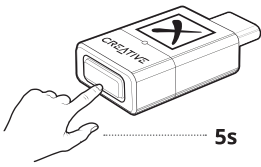
Click on the *Bluetooth Devices* module to access its settings. An option to optimize aptX Adaptive for [High Quality] or [Low Latency] will be available. If the connected audio device supports aptX Adaptive, the default option selected is High Quality Mode.

Click on the radio button to select your preferred mode.

aptX Adaptive High Quality Mode: This mode is best used by users looking to enjoy high-resolution audio playback from their supported Bluetooth devices.

aptX Adaptive Low Latency Mode: This mode is best used when users are gaming or watching a movie as the mode allows audio-to-video synchronization, effectively minimizing audio / video lag.

MASTER RESET



Press and hold the *Bluetooth* button for 5s to perform a Master Reset. The LED indicator will start flashing red. The audio transmitter will revert to its default state upon completion.

CREATIVE APP



Set up your product, personalize audio settings, enhance your product's performance, and more with the Creative app*.

- Manually select preferred remembered device to establish connection
- Experience professionally-tuned audio presets for movies, music, and games
- Set up speakers and headphones' configurations
- Configure Playback, Recording, and other settings
- Enjoy Acoustic Engine sound mode features such as Surround, Crystalizer, Bass, Smart Volume, and Dialog Plus
- Perform software upgrade, product registration, and more

*The Creative app is currently available on Windows and macOS only

TECHNICAL SPECIFICATIONS

Operating Frequency: 2402–2480 MHz

Wireless Technology: Bluetooth 5.3

Bluetooth Profiles:

- A2DP (Advanced Audio Distribution Profile)
- AVRCP (Audio / Video Remote Control Profile[^])
- HFP (Hands-free profile)

Supported Audio Codecs:

- aptX Adaptive (High Quality / Low Latency)
- aptX HD
- aptX
- SBC

Supported Playback Resolution:


Up to Stereo 24-bit / 96 kHz

Operating Range:

Up to 50m / 165 ft (unobstructed line-of-sight)

Operating Temperature: 0–45°C

Max. RF Output Power: 10 dBm

Input: 5V  100 mA

[^]Controlled from connected receiver

*Receivers must be able to support the mentioned codecs to use them

Obsah je uzamčen

Dokončete, prosím, proces objednávky.

Následně budete mít přístup k celému dokumentu.



Proč je dokument uzamčen? Nahněvat Vás rozhodně nechceme. Jsou k tomu dva hlavní důvody:

- 1) Vytvořit a udržovat obsáhlou databázi návodů stojí nejen spoustu úsilí a času, ale i finanční prostředky. Dělali byste to Vy zadarmo? Ne*. Zakoupením této služby obdržíte úplný návod a podpoříte provoz a rozvoj našich stránek. Třeba se Vám to bude ještě někdy hodit.

**) Možná zpočátku ano. Ale vězte, že dotovat to dlouhodobě nelze. A rozhodně na tom nezbohatneme.*

- 2) Pak jsou tady „roboti“, kteří se přiživují na naší práci a „vysávají“ výsledky našeho úsilí pro svůj prospěch. Tímto krokem se jim to snažíme překazit.

A pokud nemáte zájem, respektujeme to. Urgujte svého prodejce. A když neuspějete, rádi Vás uvidíme!