

# Operating Instructions Electric Silent Shredder



GARDENLINE®



## After Sales Support

TEL: 1300 130 579

WEB: [www.rossmac.com](http://www.rossmac.com)

 N16188

# RLH 2540FB

# Electric Silent Shredder

## What your 1 year warranty means

Great care has gone into the manufacture of this product and it should therefore provide you with years of good service when used properly. In the event of product failure within its intended use over the course of the first 1 year after the date of purchase, we will remedy the problem as quickly as possible once it has been brought to our attention. In the unlikely event of such an occurrence, or if you require any information about the product please contact us via our after sales support services, details of which can be found in this manual and on the product itself.

## Table of Contents

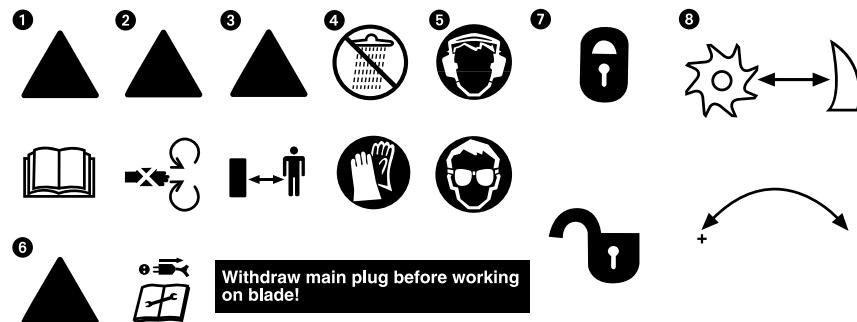
1	General Information & Safety Instructions
2	Assembly and Parts List
3	Features
4	Instructions
5	FAQ
6	Useful Information

# 1. General Information & Safety Instructions

**When using the equipment, a few safety precautions must be observed to avoid injuries and damage.**

1. Read the operating instructions carefully and comply with them at all times. It is important to consult these instructions in order to acquaint yourself with the unit, its proper use and the important safety regulations.
2. Keep this manual in a safe place, so that the information is available at all times.
3. If you give the equipment to any other person, make sure that you pass on these operating instructions as well.

**We can accept no liability for damage or accidents which arise due to non-compliance with these instructions.**



6. Always set the ON/OFF switch to OFF and pull the power plug out of the socket-outlet before doing any work on the shredder, e.g. cleaning the shredder and making adjustments, or if the power cable becomes damaged.
7. Explanation of the safety switch on the debris box: The switch is in the "Lock is closed" position: The shredded material debris box is locked. The shredder can be switched on. The switch is in the "Lock is open" position: The shredded material debris box is not locked and can be removed. The shredder cannot be switched on.
8. Explanation of the lever for adjusting the counter blade: Turning clockwise reduces the distance between the cutting unit and the counter blade. Turning counterclockwise increases the distance between the cutting unit and the counter blade.

**Caution!** The cutters continue to run for a few seconds after the motor is switched off.

## Safety information

Description of the warning sign on the machine

1. Important! Read the operating instructions and follow the warnings and safety instructions
2. Take care when the blades are rotating. Do not put your hands or feet into openings when the machine is running.
3. Important: Keep other persons and animals away from the danger zone.
4. Important: Protect the machine from the damp and never expose it to rain.
5. Important: Always wear safety goggles, ear defenders, protective gloves and heavy-duty work clothes!

## General Safety information

**Caution!** The ON/OFF switch must be set to OFF and the power plug removed from the socket outlet before cleaning or doing any other work on the shredder and whenever the cable becomes tangled. The shredder will continue to run briefly after it is switched off.

1. The shredder is not to be used by individuals under 16 years of age or any other persons who are not acquainted with these directions for use.
2. The operator is responsible for the safety of third parties within the working radius of the shredder.

# Obsah je uzamčen

**Dokončete, prosím, proces objednávky.**

**Následně budete mít přístup k celému dokumentu.**



**Proč je dokument uzamčen? Nahněvat Vás rozhodně nechceme. Jsou k tomu dva hlavní důvody:**

- 1) Vytvořit a udržovat obsáhlou databázi návodů stojí nejen spoustu úsilí a času, ale i finanční prostředky. Dělali byste to Vy zadarmo? Ne\*. Zakoupením této služby obdržíte úplný návod a podpoříte provoz a rozvoj našich stránek. Třeba se Vám to bude ještě někdy hodit.

*\*) Možná zpočátku ano. Ale vězte, že dotovat to dlouhodobě nelze. A rozhodně na tom nezbohatneme.*

- 2) Pak jsou tady „roboti“, kteří se přiživují na naší práci a „vysávají“ výsledky našeho úsilí pro svůj prospěch. Tímto krokem se jim to snažíme překazit.

A pokud nemáte zájem, respektujeme to. Urgujte svého prodejce. A když neuspějete, rádi Vás uvidíme!