

EN: FROSTMASTER – USER MANUAL

Congratulations!

Before using your frozen fruit maker for the first time, please follow these instructions:

1. Before using frozen fruits, thaw/defrost at room temperature for 10-20 minutes for better results.
2. DO NOT USE nuts, fruit with pits, or ice cubes.
3. When using berries or other frozen fruit, alternate between banana halves and additional contents to ensure an even mixture.
4. Wash the chute assembly (plunger, chute, blade cover, blade cone, gasket, and bottom cap) with warm, soapy water or in the top rack of a dishwasher. Wipe the base clean with a damp cloth. NEVER immerse the Base in water or any other liquid.
5. Read and understand the Use and Care Manual before commencing any operations.

IMPORTANT SAFEGUARDS

- When using electrical appliances, basic safety precautions should always be followed, including the following. Read all instructions before using your frozen fruit maker.
- Do not use the frozen fruit maker if the unit is damaged or malfunctioning.
- Do not use the frozen fruit maker if the electrical cord is damaged.
- To prevent the risk of electrical shock, do not submerge the base or the electrical cord in water or any liquid.
- Turn the power off and unplug the unit from the power outlet when not in use, before assembling/disassembling parts, and before cleaning.
- Never unplug from the socket by pulling the electrical cord.
- If the electrical cord is damaged, it must be replaced by the manufacturer or a similarly qualified person to avoid a hazard.
- Only use your frozen fruit maker on a flat surface.
- Do not place the unit near an electric burner or hot gas.
- Only use your frozen fruit maker indoors.
- Do not let the electrical cord hang over the edge of the work surface or touch any hot surfaces.
- Do not use an extension cord. If the provided cord is too short, move the appliance closer to an outlet. Place a bowl in front of the unit underneath the spout.

MACHINE USE

- Ensure there are no foreign objects in the frozen fruit maker.
- Be certain the chute assembly is securely locked in place before operating the appliance.
- Do not attempt to defeat the chute assembly interlock mechanism.
- Use only the plunger (included) to force food into the frozen fruit maker. Never force food into the blades with your hands.
- Avoid bodily contact with blades.
- Avoid contact with moving parts. Fingers, hair, clothes, etc., must be kept away from moving parts during use.
- Keep hands and utensils away from the spinning blade cone. Do not insert anything not mentioned in this Use and Care Manual into the chute.

- To remove excess frozen fruit from the blade cone, do not use your finger. Do not lick the blade cone.
- Do not operate the frozen fruit maker continuously for more than 2 (two) minutes. Allow the unit to cool down for 1 (one) minute.
- Run the unit for a maximum of 2 minutes on/1 minute off for a maximum of 3 cycles before allowing the unit to cool.

SAFETY OF OTHERS

- The unit is not to be used by children or persons with reduced physical, mental, or sensory capabilities.
- The unit is not to be used by people with a lack of experience or knowledge unless they have been given supervision or instruction.
- Do not let children use the frozen fruit maker without adult supervision.
- Always store the blade cone out of reach of children.

CHUTE ASSEMBLY PARTS

1. Plunger - Presses food through the chute into the blade cone.
2. Chute and Blade Cover - Provides access for food and covers the sharp blade cone.
3. Blade Cone - Blades rotate rapidly to process frozen fruits and other foods.
4. Gasket - Prevents contents from leaking out of the unit.

Note: There is a top and bottom to the Gasket. The top measures 3-3/4 inches and the bottom measures 4-1/4 inches.

5. Bottom Cap - Screws onto the Chute and Blade cover and holds all parts of the Chute Assembly in place.
6. Base - Contains motor and electrical cord. The base provides the mounting surface for the chute assembly.
7. Electrical Cord



CHUTE ASSEMBLY

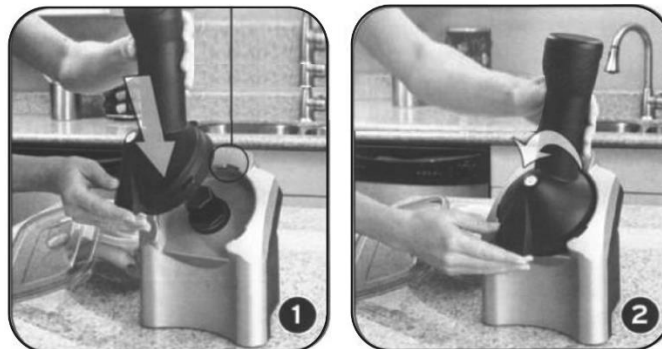
1. Place the bottom of the Gasket into the Bottom Cap.

Note: There is a top and bottom to the Gasket. The top measures 3-3/4 inches and the bottom measures 4-1/4 inches. The Gasket fits snugly in the Bottom Cap.

2. Carefully set the Blade Cone on the Gasket.
3. ALWAYS insert the gasket into the cap BEFORE screwing the cap into the blade cover.
4. Screw the Bottom Cap into the Chute and Blade Cover.



1. Place the chute assembly on the base.
2. Rotate counterclockwise until the chute assembly clicks into the locked position.



ELECTRICAL REQUIREMENTS

Volts: 220-240V 50/60Hz

Power: 200W Protection class: II

Manufacturer: Cixi City Spring Electric Appliance Co., Ltd. Industrial Park, Fuhai Town, Cixi Zhejiang, China

Importer: HS Plus d.o.o., Gmajna 8, 1236 Trzin, Slovenia

Obsah je uzamčen

Dokončete, prosím, proces objednávky.

Následně budete mít přístup k celému dokumentu.



Proč je dokument uzamčen? Nahněvat Vás rozhodně nechceme. Jsou k tomu dva hlavní důvody:

- 1) Vytvořit a udržovat obsáhlou databázi návodů stojí nejen spoustu úsilí a času, ale i finanční prostředky. Dělali byste to Vy zadarmo? Ne*. Zakoupením této služby obdržíte úplný návod a podpoříte provoz a rozvoj našich stránek. Třeba se Vám to bude ještě někdy hodit.

**) Možná zpočátku ano. Ale vězte, že dotovat to dlouhodobě nelze. A rozhodně na tom nezbohatneme.*

- 2) Pak jsou tady „roboti“, kteří se přiživují na naší práci a „vysávají“ výsledky našeho úsilí pro svůj prospěch. Tímto krokem se jim to snažíme překazit.

A pokud nemáte zájem, respektujeme to. Urgujte svého prodejce. A když neuspějete, rádi Vás uvidíme!