



## Kids' Power Toothbrush



Type 3757

powered by **BRAUN**

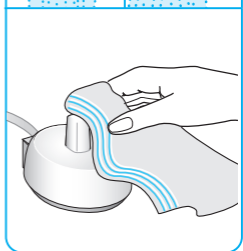
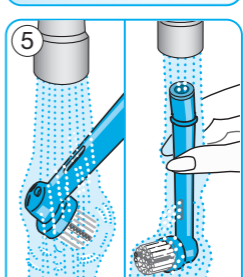
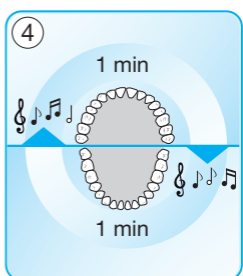
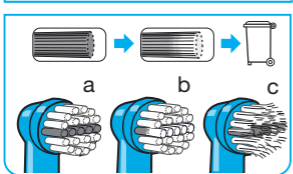
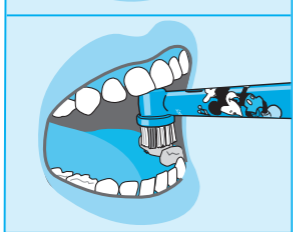
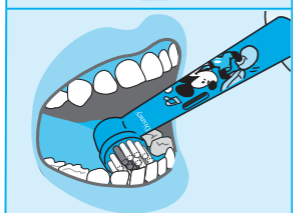
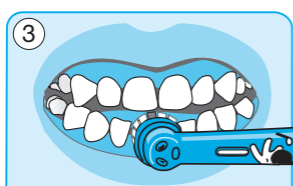
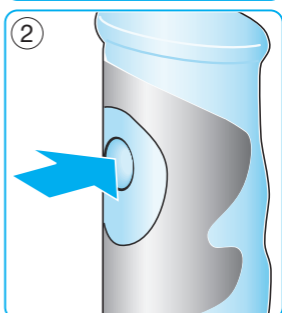
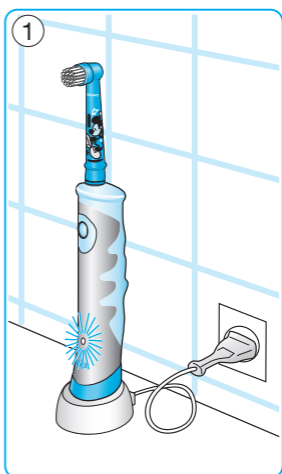
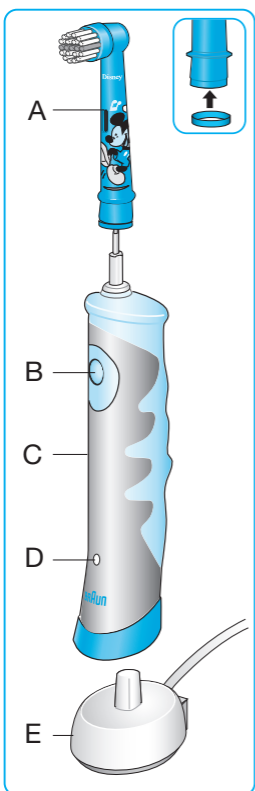


PL	801 127 286 801 1 BRAUN
CZ	221 804 335
SK	02/5710 1135
HU	(06-1) 451-1256
HR	01/66 90 330
SI	080 2822
LT	(8 5) 205 1272
LV	67798667
EST	667 5047

[www.oralb.com](http://www.oralb.com)  
[www.braun.com](http://www.braun.com)  
[www.service.braun.com](http://www.service.braun.com)

Braun GmbH  
Frankfurter Straße 145  
61476 Kronberg/Germany

**Charger type 3757**  
**Handle type 4733**



## English

Dear parents,  
 The Braun Oral-B Kids' Power Toothbrush has been developed with leading dental professionals to effectively remove plaque from children's teeth. It will make it easier for your child to brush properly and thoroughly. We hope your child will enjoy his/her new Braun Oral-B toothbrush.

Please read the usage instructions carefully before showing your child how to use this toothbrush. We recommend that parents supervise their children when they start using the appliance to help them become familiar with it.

## IMPORTANT

- Periodically check the cord for damage. If cord is damaged, take the charging unit to an Oral-B Service Centre. A damaged or non-functioning unit should no longer be used. Do not modify or repair the product. This may cause fire, electric shock or injury.
- This product is not intended for use by children under age three. Children from 3 to 14 years and persons with reduced physical, sensory or mental capabilities or lack of experience and knowledge can use the toothbrush, if they have been given supervision or instruction concerning use

of the appliance in a safe way and understand the hazards involved.

- Cleaning and maintenance shall not be performed by children.
- Children shall not play with the appliance.
- Use this product only for its intended use as described in this manual. Do not use attachments which are not recommended by the manufacturer.

#### **WARNING**

- If the product is dropped, the brush head should be replaced before the next use even if no damage is visible.
- Do not place the charger in water, liquid or store it where it can fall or be pulled into a tub or sink. Do not reach for it if it has fallen into water. Unplug immediately.
- Do not disassemble the product except when disposing of the battery. When taking out the battery for disposal of the unit, use caution not to short the positive (+) and negative (-) terminals.
- When unplugging, always hold the power plug instead of the cord. Do not touch the power plug with wet hands. This can cause an electric shock.
- If you are undergoing treatment for any oral care condition, consult your dental professional prior to use.
- This toothbrush is a personal care device and is not intended for use on multiple patients in a dental practice or institution.

#### **Description**

- A Brush head
- B On/off switch
- C Squish Grip handle
- D Charge indicator
- E Charging unit

#### **Specifications**

For voltage specifications refer to the bottom of the charging unit.

Type: 3757

Noise level: ≤65 dB (A)

#### **Connecting and charging**

The toothbrush is electrically safe and can be used in the bathroom without hesitation.

- Plug the charging unit (E) into an electrical outlet and place the toothbrush handle (C) on the charging unit.
- The red charge indicator light (D) flashes while the handle is being charged, once it is fully charged the light turns off (1). A full charge can take up to 22 hours and enables up to seven days of regular brushing (twice a day, 2 minutes).  
Note: If the charging light does not flash immediately, continue charging. It will appear in 10–15 minutes.
- For everyday use, the handle can be stored on the plugged-in charging unit to maintain the appliance at full power. Overcharging is impossible.

#### Battery maintenance

To maintain the maximum capacity of the rechargeable battery, unplug the charging unit and discharge the handle by regular use at least every 6 months.

#### **Brushing with a music timer**

Use the following steps to show and explain to your child how to use the appliance properly:

- When the handle is taken from the plugged-in charging unit, a short melody will sound.
- Put a small amount of toothpaste onto the brush head. (We recommend kids toothpaste.)
- First guide the brush head to the teeth, only then turn on the handle by pressing the on/off switch (B) (2).
- Start with the lower teeth: Slowly guide the brush head from tooth to tooth;
  - first the outsides,
  - then the insides,
  - finally the chewing surfaces (3).

Do not scrub or press too hard. The Braun Oral-B Kids' Power Toothbrush automatically provides the proper cleaning action.

- After one minute of operation, the brush movement will be interrupted by a short melody. This tells your child to move on to the upper teeth. Clean them – again tooth by tooth – until the next melody plays (after another minute of operation). This way you can make sure that your child brushes his/her teeth for at least 2 minutes as recommended by dental professionals (4).
- Turn off the handle by pressing the on/off switch (B) while the brush head is still in the mouth.

We recommend to replace the brush head every three months. The brush head is provided with a row of blue INDICATOR® bristles (3a). With proper brushing twice a day for two minutes, the colour will disappear half-way down these bristles in a 3-month period (3b), provided toothpaste is used. If bristles begin to splay before the colour starts to recede, this indicates that your child exerts too much pressure on teeth and gums (3c).

Replacement brush heads: EB10

Available at your retailer or at Oral-B Braun Service Centres.

#### **Cleaning**

After use, rinse the brush head for several seconds under running water with the handle switched on.

Then switch off the handle and take off the brush head. Rinse both parts separately under running water and wipe them dry before putting the handle back onto the charging unit.

From time to time, also clean the charging unit with a damp cloth (5).

# Obsah je uzamčen

**Dokončete, prosím, proces objednávky.**

**Následně budete mít přístup k celému dokumentu.**



**Proč je dokument uzamčen? Nahněvat Vás rozhodně nechceme. Jsou k tomu dva hlavní důvody:**

- 1) Vytvořit a udržovat obsáhlou databázi návodů stojí nejen spoustu úsilí a času, ale i finanční prostředky. Dělali byste to Vy zadarmo? Ne\*. Zakoupením této služby obdržíte úplný návod a podpoříte provoz a rozvoj našich stránek. Třeba se Vám to bude ještě někdy hodit.

*\*) Možná zpočátku ano. Ale vězte, že dotovat to dlouhodobě nelze. A rozhodně na tom nezbohatneme.*

- 2) Pak jsou tady „roboti“, kteří se přiživují na naší práci a „vysávají“ výsledky našeho úsilí pro svůj prospěch. Tímto krokem se jim to snažíme překazit.

A pokud nemáte zájem, respektujeme to. Urgujte svého prodejce. A když neuspějete, rádi Vás uvidíme!