

USER MANUAL
BENUTZERHANDBUCH
PODRĘCZNIK UŻYTKOWNIKA
UŽIVATELSKÝ MANUÁL
UŽÍVATEĽSKÝ MANUÁL

EN
DE
PL
CZ
SK



HDD EXTERNAL ENCLOSURE LITE
EXTERNE HDD-BOX LITE
ZEWNETRZNY BOX HDD LITE
HDD EXTERNÍ BOX LITE
HDD EXTERNÝ BOX LITE

CI-1044 • CI-1045



Before putting this product into operation, please read carefully all the instructions, even if you are already familiar with using similar products. Use the product only as described in this manual. Keep this manual in case you need it for future reference.

EN

The electronic version of this user manual can be downloaded on the website www.connectit-europe.com.

We recommend keeping the original packaging of the product, invoice and warranty certificate at least for the time the warranty is valid. When shipping the product, we recommend using the original packaging that the product was delivered in that will provide the best protection for it from being damaged during transport.

1 Specifications

- Input interface SuperSpeed Micro-USB 3.0
- Transfer speed 5Gbps (Max)
- Interface for SATA drives
- Support for 2.5" HDD and SSD
- Compatible with s HDD/SSD height of 7mm and 9.5mm
- Material – Aluminium
- Operating temperature -40 up to +65°C
- Operating humidity 8% up to 90% RH (non-condensing)
- Storage humidity 5% up to 90% RH (non-condensing)

2 Overview

1. Micro-USB 3.0 port (input/output)
2. LED indicator
3. Mounting screws

3 Installation

System requirements: Windows 7/8/10, Mac OS X 10.x and up, Linux with kernel 2.6x and up

Inserting the drive

1. Unscrew the locking screws on the side and gently take out the inner frame of the enclosure.
2. Insert the HDD/SSD into the frame in the correct direction of the ports and connect the drive to the interface of the External Enclosure Case.
3. Carefully insert the inner frame with the drive into the enclosure and screw back in the locking screws.



First use and formatting the drive

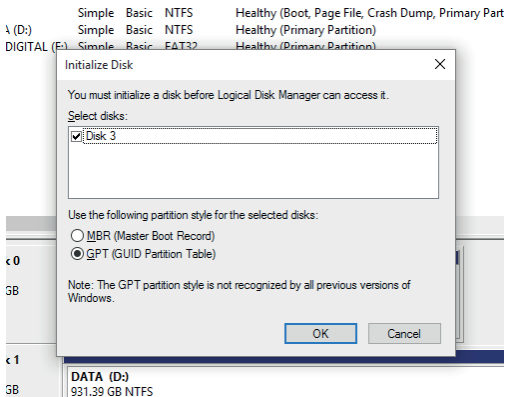
The new hard drive inserted into this External Enclosure Case needs to be formatted in order to be used for the first time. After first initialization, please follow the instructions below.

1. Connect the enclosure with inserted HDD/SSD into a free USB port on your computer using the included Micro-USB 3.0 cable.
2. Right click on "This Computer" on your desktop and choose the option "Manage".
3. In the settings in the section "storage" click on "disk management". If the drive has never been used, pop up windows will show up with the partition formatting options.

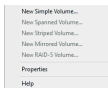
Choose the format of your drive partition according to the total capacity of the inserted drive:

- a. Less than 2TB (2000GB) choose MBR (Master Boot Record)
- b. More than 2TB (2000GB) choose GPT (GUID Partition Table)

Click the „OK“ button afterward.



4. You will create new drive partition by right clicking on the unassigned space on your drive (black color) and then clicking on the "New Simple Volume".



Obsah je uzamčen

Dokončete, prosím, proces objednávky.

Následně budete mít přístup k celému dokumentu.



Proč je dokument uzamčen? Nahněvat Vás rozhodně nechceme. Jsou k tomu dva hlavní důvody:

- 1) Vytvořit a udržovat obsáhlou databázi návodů stojí nejen spoustu úsilí a času, ale i finanční prostředky. Dělali byste to Vy zadarmo? Ne*. Zakoupením této služby obdržíte úplný návod a podpoříte provoz a rozvoj našich stránek. Třeba se Vám to bude ještě někdy hodit.

**) Možná zpočátku ano. Ale vězte, že dotovat to dlouhodobě nelze. A rozhodně na tom nezbohatneme.*

- 2) Pak jsou tady „roboti“, kteří se přiživují na naší práci a „vysávají“ výsledky našeho úsilí pro svůj prospěch. Tímto krokem se jim to snažíme překazit.

A pokud nemáte zájem, respektujeme to. Urgujte svého prodejce. A když neuspějete, rádi Vás uvidíme!