

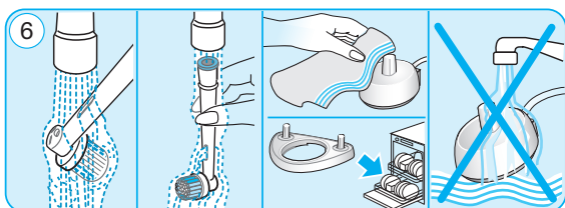
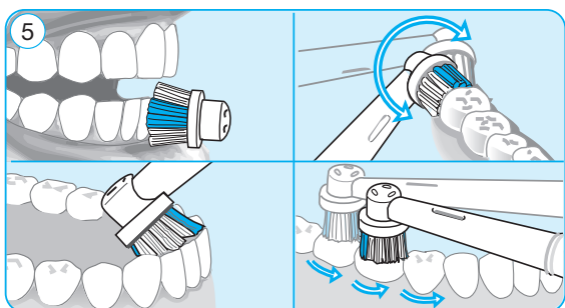
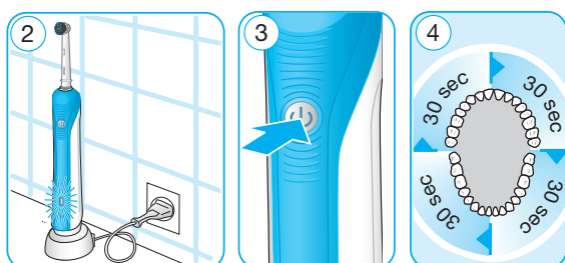
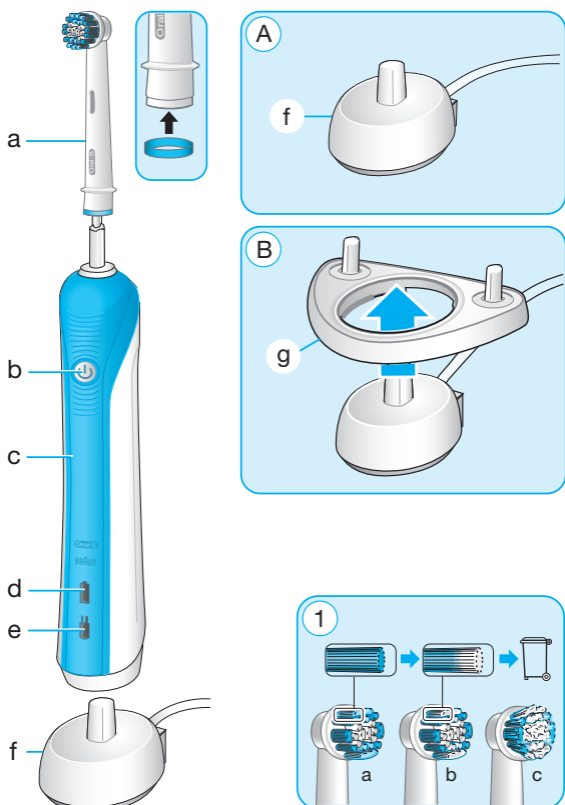
Oral-B®

PROFESSIONAL
CARE

powered
by **BRAUN**

500





English

Please read the usage instructions carefully before using first time.

IMPORTANT

- Periodically check the cord for damage. If cord is damaged, take the charging unit to an Oral-B Service Centre. A damaged or non-functioning unit should no longer be used. Do not modify or repair the product. This may cause fire, electric shock or injury.
- This product is not intended for use by children under age three. Children from 3 to 14 years, persons with reduced physical, sensory or mental capabilities, or persons with lack of experience or knowledge of the product can use the toothbrush, but should have supervision and/or instruction concerning use of the appliance in a safe way, and understand the hazards involved.
- Cleaning and maintenance should not be performed by children.
- Children should not play with the appliance.
- Use this product only for its intended use as described in this manual. Do not use

attachments which are not recommended by the manufacturer.

WARNING

- If the product is dropped, the brush head should be replaced before the next use even if no damage is visible.
- Do not place the charger in water, liquid or store it where it can fall or be pulled into a tub or sink. Do not reach for it if it has fallen into water. Unplug immediately.
- Do not disassemble the product except when disposing of the battery. When taking out the battery for disposal of the unit, use caution so as not to short the positive (+) and negative (-) terminals.
- When unplugging, always hold the power plug instead of the cord. Do not touch the power plug with wet hands. This can cause an electric shock.
- If you are undergoing treatment for any oral care condition, consult your dental professional prior to use.

Description

- a Brush head
- b On/off button
- c Handle
- d Charge indicator light
- e Low charge indicator light
- f Basic charger
- g Brush head holder (depending on model)

Specifications:

Noise level: ≤65 dB (A)

For voltage specifications please refer to the bottom of the charging unit.

Connecting and charging

Your toothbrush has a waterproof handle, is electrically safe and designed for use in the bathroom.

- Plug the basic charger (f) or the assembled charging unit (see picture B, page 2) into an electrical outlet and place the toothbrush handle (c) on the charging unit.
- The green charge indicator light (d) flashes while the handle is being charged. Once it is fully charged, the green charge indicator light shines continuously for 5 seconds and then it turns off. A full charge enables up to seven days of regular brushing (twice a day, 2 minutes). To check the charging status when the charging light is off, shortly lift up and return your handle on the charging unit. The charge indicator light will shine permanently for 5 seconds and turns off when your handle is fully charged.
- When the rechargeable battery is low, the red low charge indicator light (e) starts flashing after turning off the toothbrush.
- For everyday use, the toothbrush handle can be stored on the charging unit to maintain it at full power. Overcharging is impossible. However for environmental reasons, Oral-B recommends to unplug the charging unit until the next recharge is required.
- To maintain the maximum capacity of the rechargeable battery, unplug the charging unit and fully discharge the handle with regular use at least every 6 months.

Please note: If the charge indicator light is not flashing immediately, continue charging. It will appear in 10–15 minutes.

Using your toothbrush

Wet brush head and apply toothpaste; you can use any kind of toothpaste. To avoid splashing, guide the brush head to your teeth before switching on the appliance. Guide the brush head slowly from tooth to tooth, spending a few seconds on each tooth surface. Brush the gums as well as the teeth, first the outsides, then the insides, finally the chewing surfaces (see picture 5, page 2). Do not press too hard or scrub.

Pressure Sensor

To promote optimal brushing your toothbrush has a pressure control feature installed. If too much pressure is applied, the oscillating movement of the brush head will continue but the pulsation will stop. In addition you will also hear a different sound while brushing.

Professional Timer

A short stuttering sound at 30-second intervals reminds you to brush all four quadrants of your mouth equally (see picture 4, page 2).

A long stuttering sound indicates the end of the professionally recommended 2-minute brushing time. The elapsed brushing time is memorised when the handle is briefly switched off during brushing. When pausing longer than 30 seconds the timer resets.

In the first few days of using any electric toothbrush, your gums may bleed slightly. In general bleeding should stop after a few days. Should it persist after 2 weeks, please consult your dentist or dental hygienist.

Individual brush heads and accessories

Braun Oral-B Precision Clean brush head



The Oral-B Precision Clean brush head features outstanding oscillating-rotating action to effectively clean your teeth, clean along the gumline and in hard-to-reach areas such as behind teeth.

Braun Oral-B Sensitive brush head



The Braun Oral-B Sensitive brush head provides thorough cleaning for sensitive teeth and gums. It has an extra soft bristle texture that is gentle on teeth and gums.

Braun Oral-B 3D WHITE brush head



The Braun Oral-B 3D WHITE brush head is specifically designed to polish and naturally whiten your teeth by removing surface stains that can come from coffee, tea and tobacco. We do not recommend using the Braun Oral-B 3D WHITE brush head with braces. Children under 12 years old should not use the Braun Oral-B 3D WHITE brush head.

Oral-B brush heads feature blue INDICATOR® bristles to help you monitor brush head replacement need. With thorough brushing, twice a day for two minutes, the light blue color will fade halfway approximately within 3 months, signaling it is time to change the brush head (see picture 1, page 2).

Obsah je uzamčen

Dokončete, prosím, proces objednávky.

Následně budete mít přístup k celému dokumentu.



Proč je dokument uzamčen? Nahněvat Vás rozhodně nechceme. Jsou k tomu dva hlavní důvody:

- 1) Vytvořit a udržovat obsáhlou databázi návodů stojí nejen spoustu úsilí a času, ale i finanční prostředky. Dělali byste to Vy zadarmo? Ne*. Zakoupením této služby obdržíte úplný návod a podpoříte provoz a rozvoj našich stránek. Třeba se Vám to bude ještě někdy hodit.

**) Možná zpočátku ano. Ale vězte, že dotovat to dlouhodobě nelze. A rozhodně na tom nezbohatneme.*

- 2) Pak jsou tady „roboti“, kteří se přiživují na naší práci a „vysávají“ výsledky našeho úsilí pro svůj prospěch. Tímto krokem se jim to snažíme překazit.

A pokud nemáte zájem, respektujeme to. Urgujte svého prodejce. A když neuspějete, rádi Vás uvidíme!