

**Oral-B®**

**Vitality™**

D 12513

D 12013



powered by

**BRAUN**

Type 3709



**UK**

0 800 73 11 792

**IRL**

1 800 509 448

**F**

0 810 365 855

**B**

0 800 14 592

**LU**

4 00 50 51

**PL**

0 801 127 286  
0 801 1 BRAUN

**CZ**

221 804 335

**SK**

02/5710 1135

**H**

06-1-451-1256

**TR**

0 212 473 75 85

**RUS**

8-800-200-20-20

**UA**

+38 044 428 65 05

**Internet:**

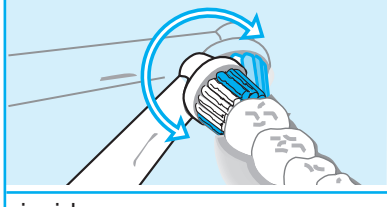
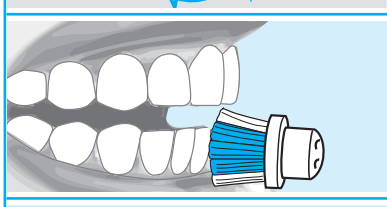
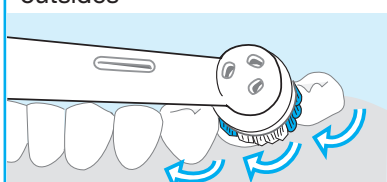
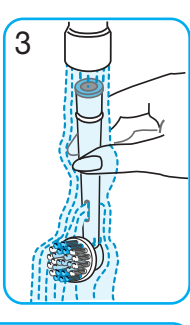
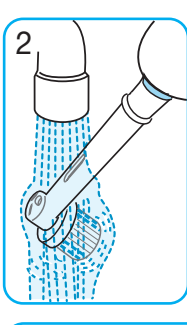
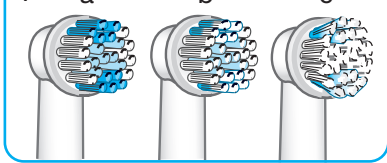
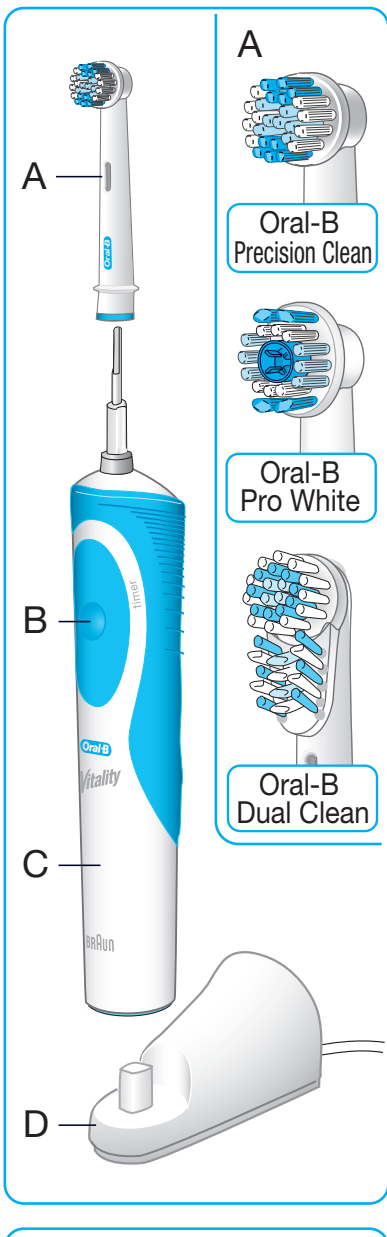
[www.oralb.com](http://www.oralb.com)

[www.braun.com](http://www.braun.com)

[www.service.braun.com](http://www.service.braun.com)

Braun GmbH  
Frankfurter Straße 145  
61476 Kronberg / Germany

3-713-100/00/I-08/M  
GB/F/PL/CZ/SK/H/TR/RUS/UA/Arab



## English

Please read the use instructions carefully before first use.

### Important

- Periodically check the cord for damage. A damaged or non-functioning unit shall no longer be used. Take the charging unit (D) to an Oral-B Braun Service Centre.
- This product is not intended for use by children under age three.
- This appliance is not intended for use by children or persons with reduced physical or mental capabilities, unless they are given supervision by a person responsible for their safety. In general, we recommend that you keep the appliance out of reach of children.
- If the product is dropped, the brush head should be replaced before the next use even if no damage is visible.

### Description

A Brush head (depending on model) – interchangeable

B On/off switch

C Handle

D Charging unit

### Charging

- Plug the charging unit (D) into an electrical outlet. Place the handle on the charging unit. Handle must be switched off.
- A full charge takes 16 hours and will provide an operation time of approximately 20 minutes.
- For everyday use, the handle can be stored on the plugged-in charging unit to maintain the toothbrush at full power. Overcharging is impossible.

### Battery maintenance

To maintain the maximum capacity of the rechargeable battery, you must discharge it at least once every 6 months. To do this, unplug the charging unit and allow the battery to run down with normal use.

### Using the toothbrush

- Wet brush head and apply toothpaste.
- Place brush head on teeth, then switch on.
- Slowly guide the brush head from tooth to tooth, first the outsides, then the insides, finally the chewing surfaces. Do not press too hard or scrub.
- After two minutes (brushing time recommended by dentists) the timer (D 12513 model only) will signal by a short stutter.
- During the first days of use, gums may bleed slightly. Should bleeding persist after 2 weeks, contact your dentist.
- Replace brush head every 3 months, when bristles are worn (1c) or when colour on Indicator bristles (1b) has faded half-way down the bristles.

### Cleaning

After use, rinse the brush head under running water (2). Remove the brush head and rinse brush head and handle separately (3), then dry.

Subject to change without notice.

This product conforms to the European Directives EMC 2004/108/EC and Low Voltage 2006/95/EC.



This product contains rechargeable batteries. In the interest of protecting the environment, please do not dispose of the product in the household waste



at the end of its useful life. Disposal can take place at an Oral-B Braun Service Centre or at appropriate collection points provided in your country.

## Français

Veuillez lire le mode d'emploi soigneusement avant d'utiliser l'appareil pour la première fois.

### Important

- Vérifier de temps en temps que le cordon d'alimentation n'est pas endommagé. Ne plus utiliser un appareil endommagé ou ne fonctionnant pas. Amener le chargeur (D) à votre Centre de Service Oral-B Braun.
- Ce produit ne convient pas aux enfants de moins de trois ans.
- Cet appareil n'est pas destiné à des enfants ou à des personnes aux capacités mentales et physiques réduites à moins qu'elles ne soient sous la surveillance d'un adulte responsable de leur sécurité. Mais de manière générale nous recommandons de maintenir cet appareil hors de portée des enfants.
- Si le produit venait à tomber, la tête de brosse devra être remplacée avant la prochaine utilisation même si aucun dégât n'est apparent.

### Description

A Brossette (suivant le modèle) – interchangeable

B Commutateur marche/arrêt

C Corps de brosse

D Chargeur

### Mise en charge

- Brancher le chargeur (D) dans une prise électrique. Placer le corps de brosse sur le chargeur. La poignée doit être sur arrêt.
- Un cycle de charge complet prend 16 heures et vous permettra d'utiliser votre brosse à dents pendant environ 20 minutes.

# Obsah je uzamčen

**Dokončete, prosím, proces objednávky.**

**Následně budete mít přístup k celému dokumentu.**



**Proč je dokument uzamčen? Nahněvat Vás rozhodně nechceme. Jsou k tomu dva hlavní důvody:**

- 1) Vytvořit a udržovat obsáhlou databázi návodů stojí nejen spoustu úsilí a času, ale i finanční prostředky. Dělali byste to Vy zadarmo? Ne\*. Zakoupením této služby obdržíte úplný návod a podpoříte provoz a rozvoj našich stránek. Třeba se Vám to bude ještě někdy hodit.

*\*) Možná zpočátku ano. Ale vězte, že dotovat to dlouhodobě nelze. A rozhodně na tom nezbohatneme.*

- 2) Pak jsou tady „roboti“, kteří se přiživují na naší práci a „vysávají“ výsledky našeho úsilí pro svůj prospěch. Tímto krokem se jim to snažíme překazit.

A pokud nemáte zájem, respektujeme to. Urgujte svého prodejce. A když neuspějete, rádi Vás uvidíme!