

Guarantee card
Garantiekarte
Carte de garantie
Certificato di garanzia
Tarjeta de garantía
Garantiekarte
Certificado de garantía
Garantibevis
Garantibevis
Takuutodistus
Garantibevis
Certificat de garanție

Záruční list
Záručný list
Гаранционна карта
Garancialevél
Karta Gwarancyjna
Πιστοποιητικό εγγύησης
כתב אחריות
Garanti sertifikasi
Гарантійний талон
Гарантийный сертификат
保修证书
شهادة الضمان

Stamp and signature of dealer
Stempel und Unterschrift des Händlers
Cachet et signature du commerçant
Timbro e firma del rivenditore
Sello y firma del proveedor
Stempel en handtekening van de handelaar
Carimbo e firma do revendedor
Selgerens stempel og underskrift
Återförsäljarens stämpel och namnteckninge
Myyjän leima ja allekirjoitus
Forhandlerens stempel og underskrift
Eladó pecsétje és aláírása
razlika a podpis prodávce
Подпис и печат на продавача:
Tampila i semnătura vânzătorului
Pieczęć i podpis sprzedawcy
Σφραγίδα και υπογραφή του πωλητή
תאריך קניה
Saticinin mühür ve imzası
Печатка і підпис продавця
Печать и подпись продавца
ختم و توقيع البائع



00060704-03/16

INSTRUCTIONS FOR USE AND INSTALLATION
BEDIENUNGSANLEITUNG UND MONTAGEANWEISUNG
INSTRUCTIONS D'UTILISATION ET DE MONTAGE
ISTRUZIONI PER L'USO E PER IL MONTAGGIO
INSTRUCCIONES DE USO Y MONTAJE
GEBRUIKAANWIJZINGEN EN INSTALLATIEAANWIJZINGEN
INSTRUÇÕES DE USO E INSTALAÇÃO
BRUKSANVISNING OG INSTALLATIONSINSTRUKSJONER
INSTRUKTIONER FÖR INSTALLATION OCH ANVÄNDNING
KÄYTTÖ- JA ASENNUSOHJEET
BETJENINGS- OG INSTALLATIONSVEJLEDNING
HASZNÁLATI ÉS TELEPÍTÉSI ÚTMUTATÓ
NÁVOD K POUŽITÍ A INSTALACI
NÁVOD NA OBSLUHU A INŠTALÁCIU
ИНСТРУКЦИЯ ЗА ЕКПЛОАТАЦИЯ И МОНТАЖ
INSTRUCȚIUNI DE FOLOSIRE SI INSTRUCȚIUNI DE INSTALARE
INSTRUKCJA OBSŁUGI I INSTALACJI

Οδηγίες χρήσης και εγκατάστασης
הוראות שימוש והתקנה
KULLANIM VE MONTAJ TALIMATLARI
ІНСТРУКЦІЯ ПО ЕКСПЛУАТАЦІЇ ТА МОНТАЖУ
ІНСТРУКЦИИ ПО ЭКСПЛУАТАЦИИ И УСТАНОВКЕ
安裝及使用说明
تعليمات التركيب والاستعمال

Hairdryer	Secador de cabelo	Vysoušeč vlasů	מייבש שיער
Haartrockner	Hårtørker	Sušič vlasov	Saç kurutma makinası
Sèche-cheveux	Hårtork	Uscător de păr	Фен
Asciugacapelli	Hiustenkuivaaja	Сешоар за коса	Фен
Secador	Hårtørrer	Suszarka do włosów	吹风机
Haardroger	Hajszáritó	Σεσουάρ	مجفف الشعر
Type:	533..	542..	554..
			561..

Wall holder	Suporte de parede	Nástěnný držák	מתקן תלייה
Wandhalter	Veggholder	Držiak na stenu	Duvara monte
Support mural	Vägghållare	Държач за стена	Настінний утримувач
Supporto a muro	Seinäteline	Support de perete	Настенний держатель
Soporte de pared	Vægbeslag	Uchwyt naścienny	壁挂底座
Muursteupt	Fali tartó	Βάση τοίχου	دعامة حائطية
Type:	036	038A	038B

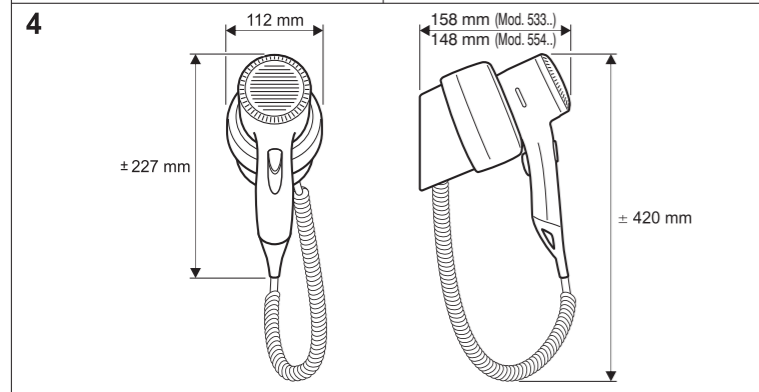
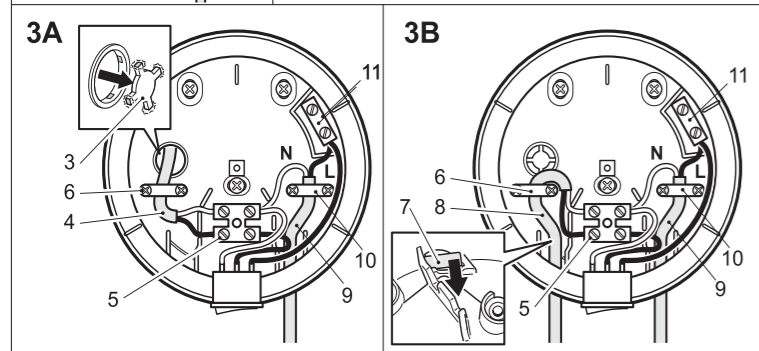
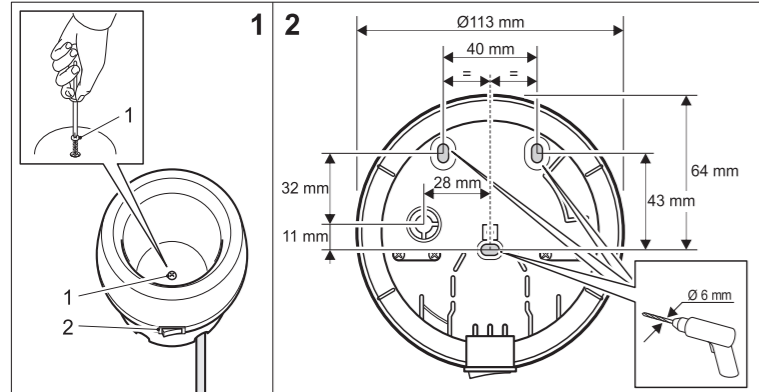
Made by Ligo Electric SA - Via Ponte Laveggio, 9 - 6853 Ligonetto / Mendrisio - Switzerland
Valera is a registered trademark of Ligo Electric S.A. - Switzerland



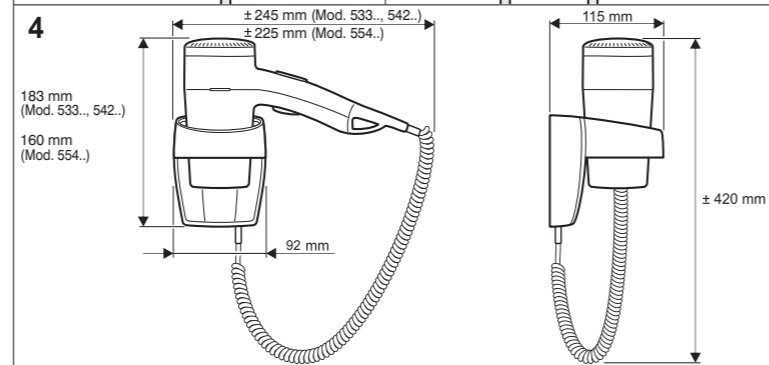
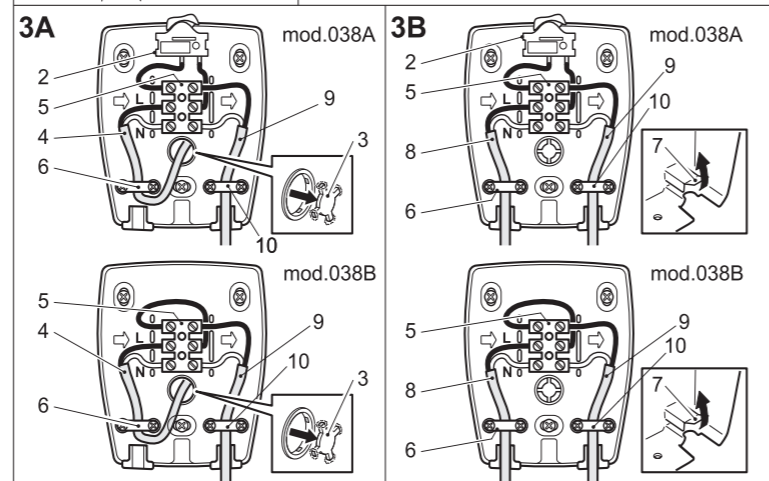
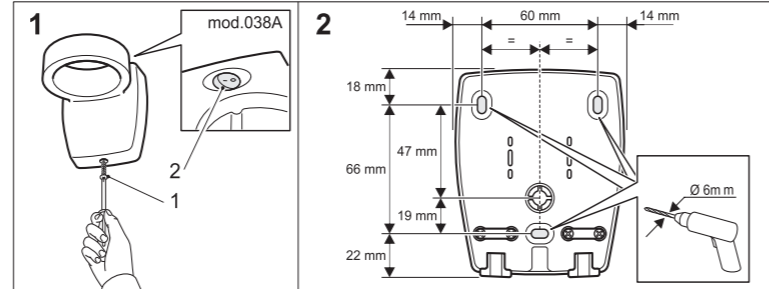
EN	Hairdryer - Wall holder	6
DE	Haartrockner - Wandhalter	9
FR	Sèche-cheveux - Support mural	12
IT	Asciugacapelli - Supporto a muro	15
ES	Secador - Soporte de pared	18
NL	Haardroger - Muursteun	21
PT	Secador de cabelo - Suporte de parede	24
NO	Hårtørker - Veggholder	27
SV	Hårtork - Vägghållare	30
FI	Hiustenkuivaaja - Seinäteline	33
DA	Hårtørrer - Vægbeslag	36
HU	Hajszáritó - Fali tartó	39
CS	Vysoušeč vlasů - Nástěnný držák	42
SK	Sušič vlasov - Držiak na stenu	45
BG	Сешоар за коса - Държач за стена	48
RO	Uscător de păr - Suport de perete	51
PL	Suszarka do włosów - Uchwyt naścienny	54
EL	Σεσουάρ - Βάση τοίχου	57
HE	מייבש שיער - מתקן תלייה	60
TR	Saç kurutma makinası - Duvara monte	63
UK	Фен - Настінний утримувач	66
RU	Фен - Настенный держатель	69
ZH	吹风机 - 壁挂底座	72
SA	مجفف للشعر - دعامة حائطية	75

ترجمة من التعليمات الأصلية

mod. 036



mod. 038A - 038B



English

ASSEMBLY AND OPERATING INSTRUCTIONS

Read these instructions thoroughly. Available also on www.valera.com

CAUTION

- For additional protection, the installation of a residual current device (RCD) having a rated residual operating current not exceeding 30mA is advisable in the electrical circuit supplying the bathroom. Ask your installer for advice.
- Make sure the electrical system is fitted with a device which guarantees omnipolar disconnection from the electricity mains under category III overvoltage conditions.
- Make sure the unit is perfectly dry before using it.
- **WARNING:** Do not use this appliance near bathtubs, showers, basins or other vessels containing water.
- This hairdryer must be fixed so that a person taking a bath or shower cannot reach the handle, considering the cord at maximum extension.
- This appliance can be used by children from 8 years of age and over, and by persons with limited physical, sensory or mental abilities or who lack the relevant experience and knowledge, if they are suitably supervised or have been educated to use the appliance safely and made aware of the associated risks.
- Do not allow children to play with the appliance.
- Children must not perform cleaning and maintenance procedures unless supervised.
- Do not use your unit if it is not working properly. Do not try to repair this electrical unit yourself, rather contact an authorized technician. If the supply cord is damaged, it must be replaced by the manufacturer, its service agent or a similarly qualified person in order to avoid a hazard.
- Plug the hairdryer into an alternating current outlet only, and make sure that the voltage of your electricity supply is the same as that indicated on the rating plate of the appliance.
- Do not immerse in water or other liquids.
- Never put the appliance in a place where it could fall into water or in other liquids.
- Do not try to salvage an electrical appliance which has fallen into water.
- Turn the unit off when you put it down.
- Unplug the appliance when not in use, but never do it by pulling the cord.
- Remember to check regularly that the air inlet and outlet grills are clean.
- Allow your appliance to cool before storing away and do not wrap the supply cord around the hairdryer in storage.

1955 **Valera**[®]
HOSPITALITY

Mod. Nr.

Date of purchase Kaufdatum Date d'achat Data d'acquisto Fecha de adquisición Datum aankoop Data de compra	Innkjøpsdato Inköpsdatum Ostapäivämäärä Købsdato Eladás dátuma Datum prodeje Data cumpărării	Дата на закупуване Datum nákupu Data zakupu Ημερομηνία αγοράς תאריך הרכישה Satin alma taríhi Дата покупки	Дата покупки تاريخ الشراء
---	--	---	------------------------------

Name and full address of purchaser
Name und vollständige Anschrift des Käufers
Nom et adresse complète de l'acheteur
Nome e indirizzo completo dell'acquirente
Nombre y dirección completa del comprador
Naam en adres van de consument
Nome e endereço do cliente
Kjøperens fullstendige navn og adresse
Köparens namn och fullständig adress
Ostajan nimi ja täydellinen osoite
Køberens fulde navn og adresse
Vevő neve és teljes címe
Jméno a adresa záhadznika
Meno a celá adresa kupujúceho/zákazníka
Име, фамилия и пълен адрес на купувача
Numele i adresa completă a cumpărătorului
Nazwisko oraz pełny adres kupującego
Όνομα, επώνυμο και πλήρης διεύθυνση του αγοραστή
תאריך קניה
Alicinin tam ismi ve adresi
Прізвище, ім'я, по батькові і повна адреса покупця
Фамилия/Имя и полный адрес покупателя
购买人完整姓名和地址
اسم المشتري وعنوانه الكامل

INSTALLATION INSTRUCTIONS

Wall holder for hairdryer

Type 036 - 038A - 038B

Type 036

Front housing model.

Type 038A

Vertical housing model.

Type 038B

As the 038A but with no switch.

Installation of wall holder

This wall holder must only be installed by a qualified electrician in conformity to applicable safety standards.

The wall holder may be installed in one of two ways:

A = connection to wall mains wiring

B = connection to surface mains wiring

Attention: before installing the wall holder always switch off the general switch of your mains electricity.

For each pole a switch with a minimum break distance between contacts of 3 mm must be fitted up-line of the appliance.

Each time the appliance is opened, the switch must be used to disconnect the appliance.

The connection wiring must be at least type H05VV-F 2x1,0 mm².

Method A

IMPORTANT: Refer to the figures for the model you have purchased.

1. Unscrew the screw (1) (fig. 1) and remove the cover from the wall unit.
2. Break the plastic membrane (3) at the back of the wall unit (fig. 3A).
3. Route the main power cable from the wall (4) through the hole left by the plastic membrane (3) (fig. 3A).
4. Fix the back of the wall unit to the wall using the fixing screws and wall plugs provided (fig. 2).
5. Remove the terminal strip (5). The input power cable (4) and the output power cable (9) of hairdryer with max input current of 10A, if not already connected, must be connected to the terminal strip(5).
In mod. 036 the Neutral output cable(9) must be connected to terminal strip(5) and the Line output cable (9) to terminal strip (11).
6. Reposition the terminal strip. Tighten the cable clamp (6 and 10) with its own screws. (fig. 3A). **IMPORTANT:** This appliance is double insulated and has no ground (earth) connection.
7. Fit the cover back on the wall unit with (1) (fig. 1).
8. Switch the power on at the mains switch. The hair dryer is now ready to use.

Method B

IMPORTANT: Refer to the figures for the model you have purchased.

1. Unscrew the screw (1) (fig. 1) and remove the cover from the wall unit.
2. Break the plastic membrane (7) (fig. 3B).
3. Fix the back of the wall unit to the wall using the fixing screws and wall plugs provided (fig. 2).
4. Route the input power cable (8) and the output power (9) into the holes (fig. 3B).
5. Remove the terminal strip (5). The input power cable (8) and the output power cable (9) of hairdryer with max input current of 10A, if not already connected, must be connected to the terminal strip(5).
In mod. 036 the Neutral output cable(9) must be connected to terminal strip (5) and the Line output cable (9) to terminal strip (11).
Reposition the terminal strip. Tighten the cable clamp (6 and 10) with its own screws. (fig. 3B). **IMPORTANT:** This appliance is double insulated and has no ground (earth) connection.
6. Fit the cover back on the wall unit with (1) (fig. 1).
7. Switch the power on at the mains switch. The hair dryer is now ready to use.

INSTRUCTIONS FOR USE

Hairdryer with wall holder

Control Switches

Control switch on wall holder

(only for models equipped with a switch) rif. 2 fig. 1:

0-1 = Off/On

Hairdryer

Type 533.03 - 533.05 - 533.03/I - 533.05/I

542.05 - 542.06 - 542.14 - 561.22

Pushbutton:

ON=On/Off

(pressure must be maintained to operate the hairdryer)

Slide Switch

Cool=(low power)

1=(medium power)

2=(maximum power)

Hairdryer

Type 554.02 - 554.05 - 554.08 - 554.11

554.13

Pushbutton:

ON=On/Off (pressure must be maintained to operate the hairdryer)

Slide Switch

1=(low power)

2=(maximum power)

Hairdryer

Type 533.04 - 533.06 - 533.14 - 533.15

554.01 - 554.04 - 554.07 - 554.10

Pushbutton=On/Off

(pressure must be maintained to operate the hairdryer)

Obsah je uzamčen

Dokončete, prosím, proces objednávky.

Následně budete mít přístup k celému dokumentu.



Proč je dokument uzamčen? Nahněvat Vás rozhodně nechceme. Jsou k tomu dva hlavní důvody:

- 1) Vytvořit a udržovat obsáhlou databázi návodů stojí nejen spoustu úsilí a času, ale i finanční prostředky. Dělali byste to Vy zadarmo? Ne*. Zakoupením této služby obdržíte úplný návod a podpoříte provoz a rozvoj našich stránek. Třeba se Vám to bude ještě někdy hodit.

**) Možná zpočátku ano. Ale vězte, že dotovat to dlouhodobě nelze. A rozhodně na tom nezbohatneme.*

- 2) Pak jsou tady „roboti“, kteří se přiživují na naší práci a „vysávají“ výsledky našeho úsilí pro svůj prospěch. Tímto krokem se jim to snažíme překazit.

A pokud nemáte zájem, respektujeme to. Urgujte svého prodejce. A když neuspějete, rádi Vás uvidíme!