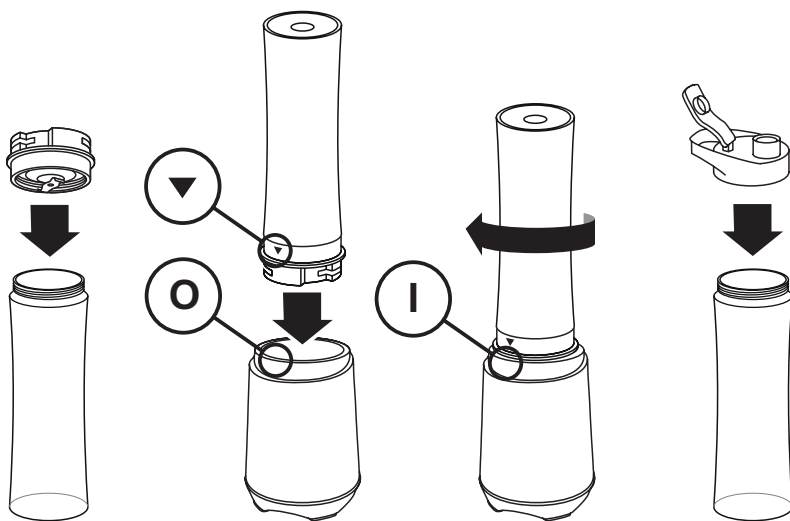
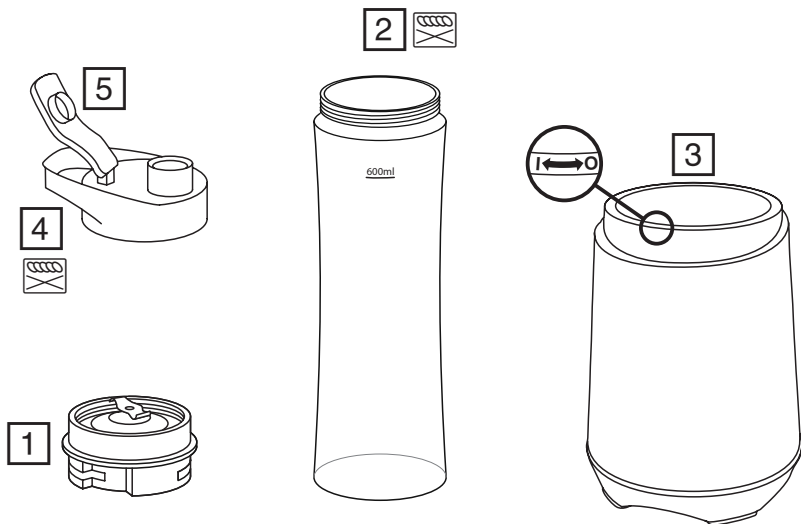




Russell Hobbs



instructions	3	pokyny (Čeština)	27
Bedienungsanleitung	5	pokyny (Slovenčina)	29
mode d'emploi	7	instrukcja	31
instructies	9	upute	33
istruzioni per l'uso	11	navodila	35
instrucciones	13	οδηγίες	37
instruções	15	utasítások	39
brugsanvisning	17	talimatlar	41
bruksanvisning (Svenska)	19	instrucțiuni	43
bruksanvisning (Norsk)	21	инструкции (Български)	45
käyttöohjeet	23	تعليمات الاستخدام	47
инструкции (Русский)	25		



Read the instructions, keep them safe, pass them on if you pass the appliance on. Remove all packaging before use.

IMPORTANT SAFEGUARDS


Follow basic safety precautions, including:

This appliance can be used by persons with reduced physical, sensory or mental capabilities or lack of experience and knowledge if they have been supervised/instructed and understand the hazards involved.

Children must not use or play with the appliance.

Keep the appliance and cable out of reach of children.

To avoid injury, take care handling the blades, emptying the appliance, and cleaning.

 Don't add hot liquid (over 40°C), as it may be ejected due to sudden steaming.

Misuse of the appliance may cause injury.

Unplug the appliance before assembly, disassembly, or cleaning.

Don't leave the appliance unattended while plugged in.

If the cable is damaged, it must be replaced by the manufacturer, its service agent, or someone similarly qualified, to avoid hazard.

- Don't put the motor unit in liquid.
- Don't use accessories or attachments other than those we supply.
- Don't use this appliance for any purpose other than making smoothies.
- Don't operate the appliance if it's damaged or malfunctions.
- Don't run the motor for more than 1 minute, or it may overheat. After 1 minute, switch off for at least 2 minutes, to let the motor cool.

HOUSEHOLD USE ONLY

DIAGRAMS

- | | |
|---------------|---|
| 1. blade unit | 4. lid |
| 2. bottle | 5. cap |
| 3. motor unit |  dishwasher – top rack |

BEFORE USING FOR THE FIRST TIME

Clean the appliance before using it for the first time.

USING

1. Sit the motor unit on a dry, firm, level surface.
2. Put the plug into the power socket.
3. Don't use more than 6 ice cubes.
4. Add liquid ingredients first, then solid ones.
5. Do not fill the appliance past the 600ml mark.
6. Screw the blade unit on to the top of the bottle.
7. Turn the bottle upside down.
8. Align ▼ on the bottle with ○ on the motor unit.
9. Lower the blade unit into the motor unit.
10. Twist the bottle until the ▼ is lined up with the I symbol to start the motor.
11. Twist it back until the ▼ is lined up with the ○ symbol to stop the motor.
12. Lift the bottle off the motor unit.
13. Turn the bottle right way up.

Obsah je uzamčen

Dokončete, prosím, proces objednávky.

Následně budete mít přístup k celému dokumentu.



Proč je dokument uzamčen? Nahněvat Vás rozhodně nechceme. Jsou k tomu dva hlavní důvody:

- 1) Vytvořit a udržovat obsáhlou databázi návodů stojí nejen spoustu úsilí a času, ale i finanční prostředky. Dělali byste to Vy zadarmo? Ne*. Zakoupením této služby obdržíte úplný návod a podpoříte provoz a rozvoj našich stránek. Třeba se Vám to bude ještě někdy hodit.

**) Možná zpočátku ano. Ale vězte, že dotovat to dlouhodobě nelze. A rozhodně na tom nezbohatneme.*

- 2) Pak jsou tady „roboti“, kteří se přiživují na naší práci a „vysávají“ výsledky našeho úsilí pro svůj prospěch. Tímto krokem se jim to snažíme překazit.

A pokud nemáte zájem, respektujeme to. Urgujte svého prodejce. A když neuspějete, rádi Vás uvidíme!