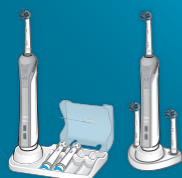


# Oral-B®

powered by **BRAUN**

## PRO

1000-3000



Charger Type 3757  
Handle Type 3766



6226916



<b>UK</b>	<b>0 800 731 1792</b>
<b>IE</b>	<b>1 800 509 448</b>
<b>PL</b>	<b>801 127 286</b> <b>801 1 BRAUN</b>
<b>CZ</b>	<b>800 11 33 22</b>
<b>SK</b>	<b>800 333 233</b>
<b>HU</b>	<b>(06-1) 451-1256</b>
<b>HR</b>	<b>01/66 90 330</b>
<b>SI</b>	<b>080 2822</b>
<b>LT</b>	<b>(8 5) 205 1272</b>
<b>LV</b>	<b>67798667</b>
<b>EE</b>	<b>667 5047</b>
<b>IL</b>	<b>1-800-666-775</b>

**Internet:**

[www.oralb.com](http://www.oralb.com)

[www.braun.com](http://www.braun.com)

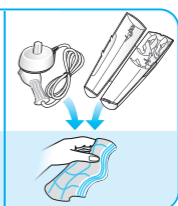
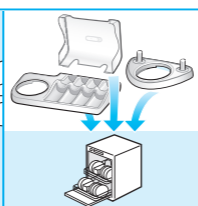
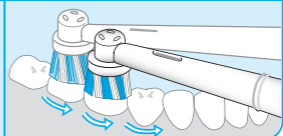
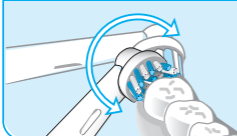
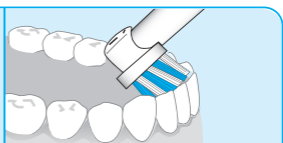
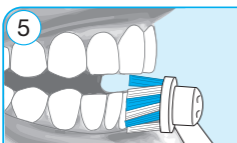
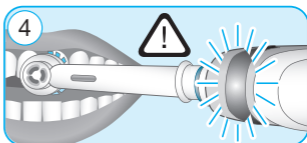
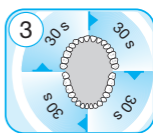
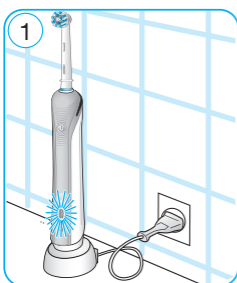
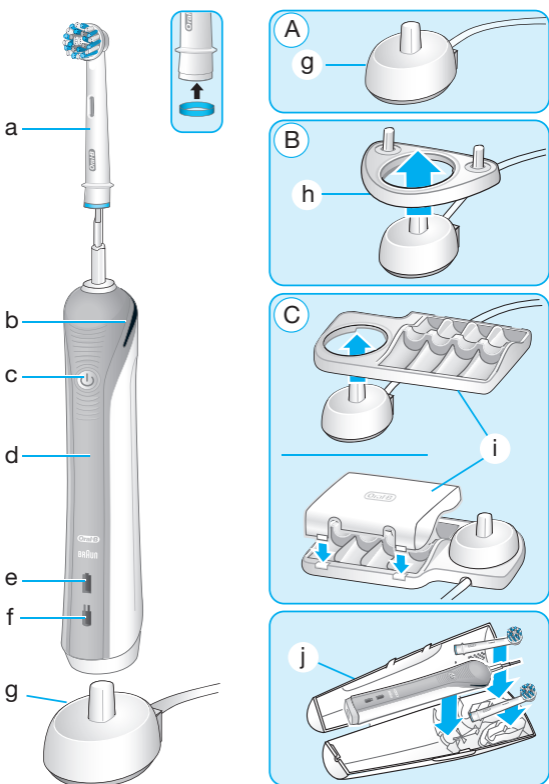
[www.service.braun.com](http://www.service.braun.com)

Braun GmbH  
Frankfurter Straße 145  
61476 Kronberg/Germany

**Charger type 3757**  
**Handle type 3766**

91639279/I-18

UK/PL/CZ/SK/HU/HR/SI/LT/LV/EE/IL



## English

Your **Oral-B®** toothbrush has been carefully designed to offer you and your family a unique brushing experience that is both safe and effective.

### IMPORTANT

- Periodically check the entire product/cord for damage. A damaged or non-functioning unit should no longer be used. If the product/cord is damaged, take it to an Oral-B Service Centre. Do not modify or repair the product. This may cause fire, electric shock or injury.
- Usage by children under age 3 is not recommended. Toothbrushes can be used by children and persons with reduced physical, sensory or mental capabilities or lack of experience and knowledge, if they have been given supervision or instruction concerning use of the appliance in a safe way and understand the hazards involved.
- Cleaning and maintenance shall not be performed by children.
- Children shall not play with the appliance.

- Use this product only for its intended use as described in this manual. Do not use attachments which are not recommended by the manufacturer. Only use charger provided with your appliance.

#### WARNING

- Do not place the charger in water or liquid or store where it can fall or be pulled into a tub or sink. Do not reach for it when fallen into water. Unplug immediately.
- This appliance contains batteries that are non-replaceable. Do not open and disassemble device. For battery recycling please dispose whole device according to local environmental regulations. Opening the handle will destroy the appliance and invalidate the warranty.
- When unplugging, always hold the power plug instead of the cord. Do not touch the power plug with wet hands. This can cause an electric shock.
- If you are undergoing treatment for any oral care condition, consult your dental professional prior to use.
- This toothbrush is a personal care device and is not intended for use on multiple patients in a dental practice or institution.

To avoid brush head breakage which may generate a small parts choking hazard or damage teeth:

- Prior to each use, ensure the brush head fits well. Discontinue use of the toothbrush, if brush head no longer fit properly. Never use without a brush head.
- If the toothbrush handle is dropped, the brush head should be replaced before the next use even if no damage is visible.
- Replace brush head every 3 months or sooner if brush head becomes worn.
- Clean brush head properly after each use (see «Cleaning recommendations» paragraph). Proper cleaning ensures the safe use and functional life of the toothbrush.

#### Description

- a Brush head
- b Pressure sensor light (depending on model)
- c On/off button (mode selection)
- d Handle
- e Charge indicator light
- f Low charge indicator light
- g Charger

#### Accessories (depending on model):

- h Brush head holder
- i Brush head compartment with protective cover
- j Travel case (design may vary)

**Note:** Content may vary based on the model purchased.

#### Specifications

For voltage specifications please refer to the bottom of the charging unit.

Noise level: ≤65 dB (A)

#### Charging and Operating

Your toothbrush is electrically safe and designed for use in the bathroom.

- You may use your toothbrush right away or charge it briefly by placing it on the plugged-in charger (g).  
Note: In case the battery is empty (no charging light illuminated (e/f) while charging or no reaction when pressing the on/off button (c)), charge at least for 30 minutes.
- The green charge indicator light (e) flashes while the handle is being charged. Once it is fully charged, the light turns off. A full charge typically takes 12 hours and enables at least 2 weeks of regular brushing (twice a day, 2 minutes) (picture 1).  
Note: After deep discharge, the charge indicator light might not flash immediately; it can take up to 30 minutes.
- If the battery is running low, the red charge indicator light (f) is flashing for a few seconds when turning your toothbrush on/off and the motor is reducing its speed. Once the battery is empty, the motor will stop; it will need at least a 30-minute charge for one usage.
- You can always store the handle on the plugged-in charging unit; a battery overcharge is prevented by device.  
Note: Store handle at room temperature for optimal battery maintenance.  
**Caution:** Do not expose handle to temperatures higher than 50 °C. Recommended ambient temperature for charging is 5 °C to 35 °C.

#### Using your toothbrush

##### Brushing technique

Wet brush head and apply any kind of toothpaste. To avoid splashing, guide the brush head to your teeth before switching on the appliance (picture 2). When brushing your teeth with one of the Oral-B **oscillating-rotating brush heads** guide the brush head slowly from tooth to tooth, spending a few seconds on each tooth surface (picture 5).

With any brush head do not forget to brush all 3 surfaces of your teeth: chewing, outer and inner surfaces. Brush all four quadrants of your mouth equally. You may also consult your dentist or dental hygienist about the right technique for you.

In the first days of using any electric toothbrush, your gums may bleed slightly. In general, bleeding should stop after a few days.

Should it persist after 2 weeks, please consult your dentist or dental hygienist. If you have sensitive teeth and/or gums, Oral-B recommends using the «Sensitive» mode (depending on model) (optional in combination with an Oral-B «Sensitive» brush head).

##### Brushing modes (depending on model)

1-mode	2-modes	3-modes	4-modes	Brushing modes (for handle type 3766)
✓	✓	✓	✓	<b>Daily Clean</b> – Standard for daily mouth cleaning
	✓	✓	✓	<b>Sensitive</b> – Gentle, yet thorough cleaning for sensitive areas
		✓	✓	<b>Whitening</b> – Exceptional polishing for occasional or everyday use
			✓	<b>Gum Care</b> – Gentle massage of gums

How to switch between modes:

Your toothbrush automatically starts in the «Daily Clean» mode.

To switch to other modes, successively press the on/off button. Switch off the toothbrush by holding the on/off button until the motor stops.

##### Professional Timer

A short stuttering sound at 30-second intervals reminds you to brush all four quadrants of your mouth equally (picture 3). A long stuttering sound indicates the end of the professionally recommended 2-minute brushing time.

# Obsah je uzamčen

**Dokončete, prosím, proces objednávky.**

**Následně budete mít přístup k celému dokumentu.**



**Proč je dokument uzamčen? Nahněvat Vás rozhodně nechceme. Jsou k tomu dva hlavní důvody:**

- 1) Vytvořit a udržovat obsáhlou databázi návodů stojí nejen spoustu úsilí a času, ale i finanční prostředky. Dělali byste to Vy zadarmo? Ne\*. Zakoupením této služby obdržíte úplný návod a podpoříte provoz a rozvoj našich stránek. Třeba se Vám to bude ještě někdy hodit.

*\*) Možná zpočátku ano. Ale vězte, že dotovat to dlouhodobě nelze. A rozhodně na tom nezbohatneme.*

- 2) Pak jsou tady „roboti“, kteří se přiživují na naší práci a „vysávají“ výsledky našeho úsilí pro svůj prospěch. Tímto krokem se jim to snažíme překazit.

A pokud nemáte zájem, respektujeme to. Urgujte svého prodejce. A když neuspějete, rádi Vás uvidíme!