

# Oral-B®

## VITALITY™

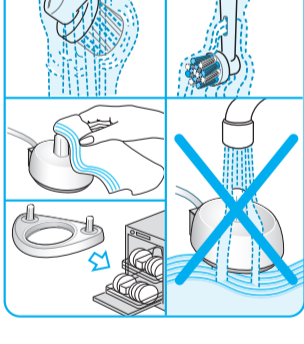
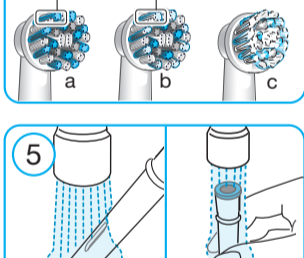
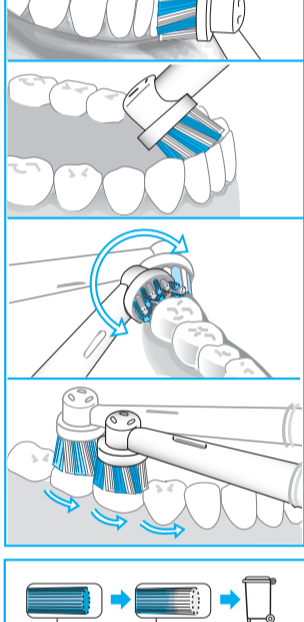
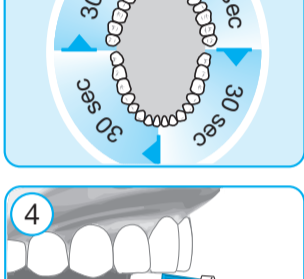
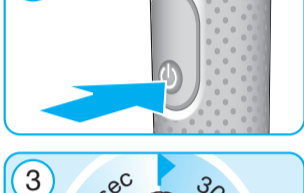
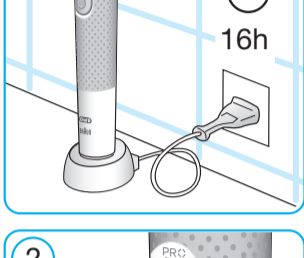
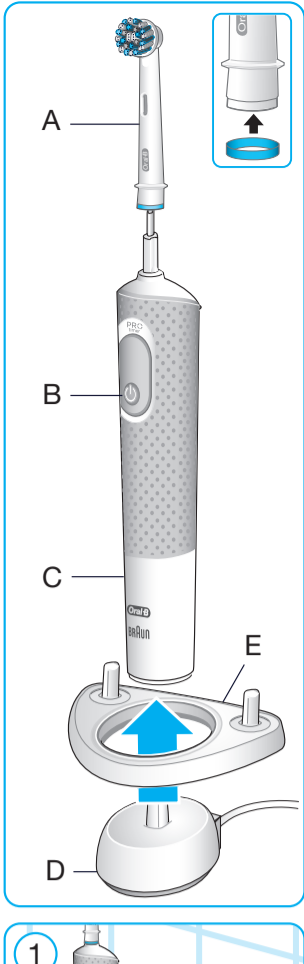
powered by **BRAUN**



Charger Type 3757  
Handle Type 3710



91571851



- (GB)** 0 800 731 1792
- (IE)** 1 800 509 448
- (PL)** 801 127 286  
801 1 BRAUN
- (CZ)** 800 11 33 22
- (SK)** 800 333 233
- (HU)** (06-1) 451-1256
- (HR)** 01/66 90 330
- (SI)** 080 2822
- (LT)** (8 5) 205 1272
- (LV)** 67798667
- (EE)** 667 5047

**Internet:**  
[www.oralb.com](http://www.oralb.com)  
[www.braun.com](http://www.braun.com)  
[www.service.braun.com](http://www.service.braun.com)

Braun GmbH  
 Frankfurter Straße 145  
 61476 Kronberg/Germany

**Charger type 3757**  
**Handle type 3710**

## English

Welcome to Oral-B!

Please read the use instructions carefully before first use.

### IMPORTANT

- Periodically check the entire product/cord for damage. A damaged or non-functioning unit should no longer be used. If the product/cord is damaged, take it to an Oral-B Service Centre. Do not modify or repair the product. This may cause fire, electric shock or injury.
- Usage by children under age 3 is not recommended. Toothbrushes can be used by children and persons with reduced physical, sensory or mental capabilities or lack of experience and knowledge, if they have been given supervision or instruction concerning use of the appliance in a safe way and understand the hazards involved.
- Cleaning and maintenance shall not be performed by children.
- Children shall not play with the appliance.
- Use this product only for its intended use as described in this manual. Do not use attachments which are not recommended by the manufacturer.

### WARNING

- Do not place the charger in water or liquid or store where it can fall or be pulled into a tub or sink. Do not reach for it when fallen into water. Unplug immediately.
- This appliance contains batteries that are non-replaceable. Do not disassemble the product except when disposing of the battery. When taking out the battery for disposal of the unit, use caution so as not to short the positive (+) and negative (-) terminals.
- When unplugging, always hold the power plug instead of the cord. Do not touch the power plug with wet hands. This can cause an electric shock.
- If you are undergoing treatment for any oral care condition, consult your dental professional prior to use.
- This toothbrush is a personal care device and is not intended for use on multiple patients in a dental practice or institution.

To avoid brush head breakage which may generate a small parts choking hazard or damage teeth:

- Prior to each use, ensure the brush head fits well. Discontinue use of the toothbrush, if brush head no longer fit properly. Never use without a brush head.
- If the toothbrush handle is dropped, the brush head should be replaced before the next use even if no damage is visible
- Replace brush head every 3 months or sooner if brush head becomes worn.
- Clean brush head properly after each use (see «Cleaning recommendations» paragraph). Proper cleaning ensures the safe use and functional life of the toothbrush.

### Description

- A Brush head
- B On/off button
- C Handle
- D Charging unit

### Accessories

(depending on model):

- E Brush head holder (depending on model)

**Note:** Content may vary based on the model purchased.

### Specifications

For voltage specifications please refer to the bottom of the charging unit.

Noise level: ≤ 65 dB (A)

### Charging and Operating

Your toothbrush is electrically safe and designed for use in the bathroom.

- Plug the charging unit (D) into an electrical outlet and place the toothbrush handle (C) on the charging unit. A full charge takes about 16 hours and enables up to five days of regular brushing (twice a day, 2 minutes) (picture 1).
- For everyday use, the toothbrush handle can be stored on the plugged-in charging unit to maintain it at full power. Overcharging is impossible.
- To maintain the maximum capacity of the rechargeable battery, unplug the charging unit and fully discharge the handle with regular use at least every 6 months.

### Using your toothbrush

#### Brushing technique

- Wet brush head and apply any kind of toothpaste. To avoid splashing, guide the brush head to your teeth before switching on the appliance (B) (picture 2).
- When brushing your teeth with one of the **Oral-B oscillating-rotating brush heads** guide the brush head slowly from tooth to tooth, spending a few seconds on each tooth surface.
- When using the **Oral-B «TriZone» brush head** place the toothbrush bristles against the teeth at a slight angle towards the gumline. Apply light pressure and start brushing in back and forth motions, just like you would do with a manual toothbrush.
- With any brush head start brushing the outsides, then the insides and finally the chewing surfaces. Brush all four quadrants of your mouth equally. Do not press too hard, simply let the brush do all the work (picture 4). You may also consult your dentist or dental hygienist about the right technique for you.

In the first few days of using any electric toothbrush, your gums may bleed slightly. In general, bleeding should stop after a few days. Should it persist after 2 weeks, please consult your dentist or dental hygienist.

#### Timer (depending on model)

An incorporated timer memorises the elapsed brushing time (depending on model) (picture 3).

# Obsah je uzamčen

**Dokončete, prosím, proces objednávky.**

**Následně budete mít přístup k celému dokumentu.**



**Proč je dokument uzamčen? Nahněvat Vás rozhodně nechceme. Jsou k tomu dva hlavní důvody:**

- 1) Vytvořit a udržovat obsáhlou databázi návodů stojí nejen spoustu úsilí a času, ale i finanční prostředky. Dělali byste to Vy zadarmo? Ne\*. Zakoupením této služby obdržíte úplný návod a podpoříte provoz a rozvoj našich stránek. Třeba se Vám to bude ještě někdy hodit.

*\*) Možná zpočátku ano. Ale vězte, že dotovat to dlouhodobě nelze. A rozhodně na tom nezbohatneme.*

- 2) Pak jsou tady „roboti“, kteří se přiživují na naší práci a „vysávají“ výsledky našeho úsilí pro svůj prospěch. Tímto krokem se jim to snažíme překazit.

A pokud nemáte zájem, respektujeme to. Urgujte svého prodejce. A když neuspějete, rádi Vás uvidíme!