



JBL BAR STUDIO



 DOLBY AUDIO™

 HIGH DEFINITION MULTIMEDIA INTERFACE

 Bluetooth®

OWNER'S MANUAL

TABLE OF CONTENTS

1. INTRODUCTION	3	9. PRODUCT SPECIFICATIONS	7
		GENERAL	7
2. WHAT'S IN THE BOX	3	INPUT AND OUTPUT	7
		BLUETOOTH SECTION	7
3. PLACE YOUR SOUNDBAR	3	PRODUCT DIMENSION AND WEIGHT	7
PLACE THE SOUNDBAR ON THE TABLE	3		
WALL MOUNT THE SOUNDBAR	3	10. TROUBLESHOOTING	8
		SYSTEM	8
4. CONNECT YOUR SOUNDBAR	4	SOUND	8
CONNECT SOUNDBAR TO YOUR TV	4	BLUETOOTH	8
CONNECT SOUNDBAR TO OTHER DEVICES	4	REMOTE CONTROL	8
HOW TO POWER ON YOUR SOUNDBAR SYSTEM	4		
5. USE YOUR SOUNDBAR SYSTEM	4		
TO CONTROL	4		
HOW TO USE BLUETOOTH WITH YOUR SOUNDBAR	5		
HOW TO USE A USB DEVICE	5		
6. SOUND SETTING	6		
BEFORE YOU START	6		
ADJUST THE VOLUME	6		
CHOOSE SOUND EFFECT	6		
7. RESPOND TO YOUR TV REMOTE CONTROL	6		
FOR MOST SAMSUNG, LG, SONY AND VIZIO TVS	6		
FOR OTHER TVS	7		
8. SYSTEM	7		
1. AUTO STANDBY	7		
2. AUTO WAKE UP	7		
3. APPLY FACTORY SETTING	7		
4. SOFTWARE UPDATE	7		

1. INTRODUCTION

Thank you for purchasing the JBL BAR STUDIO. The JBL BAR STUDIO is designed to bring an extraordinary sound experience to your home entertainment system. We urge you to take a few minutes to read through this manual, which describes the product and includes step-by-step instructions to help you set up and get started.

CONTACT US: If you have any questions about JBL BAR STUDIO, its installation or its operation, please contact your retailer or custom installer, or visit our website at: www.JBL.com.

2. WHAT'S IN THE BOX

Soundbar

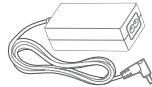


Remote Control

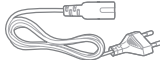
Battery size of remote control: CR2025



Power Adaptor
(4ft, 1200mm)

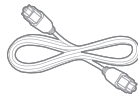


Power Cables*
(5ft, 1500mm)



*Power cable types and numbers varied by regions

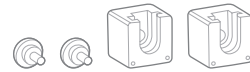
Optical Cable
(4ft, 1200mm)



AUX cable
(4ft, 1200mm)



Wall Mount Brackets

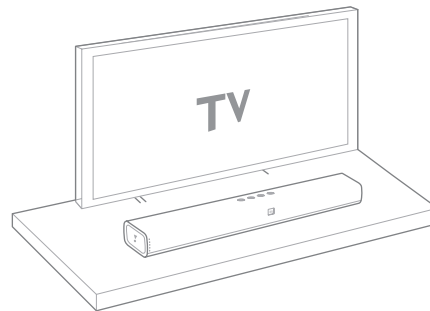


Product Information & Wall-mounted guide



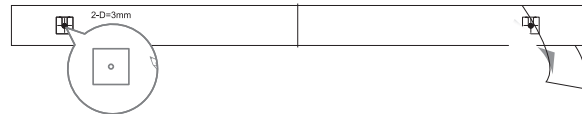
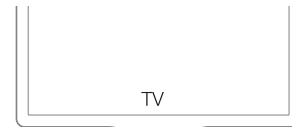
3. PLACE YOUR SOUNDBAR

3a. Place the Soundbar on the table

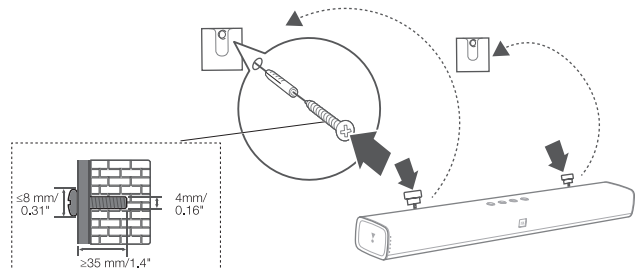


3b. Wall mount the Soundbar

Use tape to stick the wall-mounted paper guide on the wall, push a pen tip through the center of each mounting hole to mark the wall-mounted bracket location and remove the paper.



Screw the wall mount brackets on the pen mark; screw the threaded mounting post into the back of the soundbar; then hook the soundbar on the wall.



Obsah je uzamčen

Dokončete, prosím, proces objednávky.

Následně budete mít přístup k celému dokumentu.



Proč je dokument uzamčen? Nahněvat Vás rozhodně nechceme. Jsou k tomu dva hlavní důvody:

1) Vytvořit a udržovat obsáhlou databázi návodů stojí nejen spoustu úsilí a času, ale i finanční prostředky. Dělali byste to Vy zadarmo? Ne*. Zakoupením této služby obdržíte úplný návod a podpoříte provoz a rozvoj našich stránek. Třeba se Vám to bude ještě někdy hodit.

**) Možná zpočátku ano. Ale vězte, že dotovat to dlouhodobě nelze. A rozhodně na tom nezbohatneme.*

2) Pak jsou tady „roboti“, kteří se přiživují na naší práci a „vysávají“ výsledky našeho úsilí pro svůj prospěch. Tímto krokem se jim to snažíme překazit.

A pokud nemáte zájem, respektujeme to. Urgujte svého prodejce. A když neuspějete, rádi Vás uvidíme!