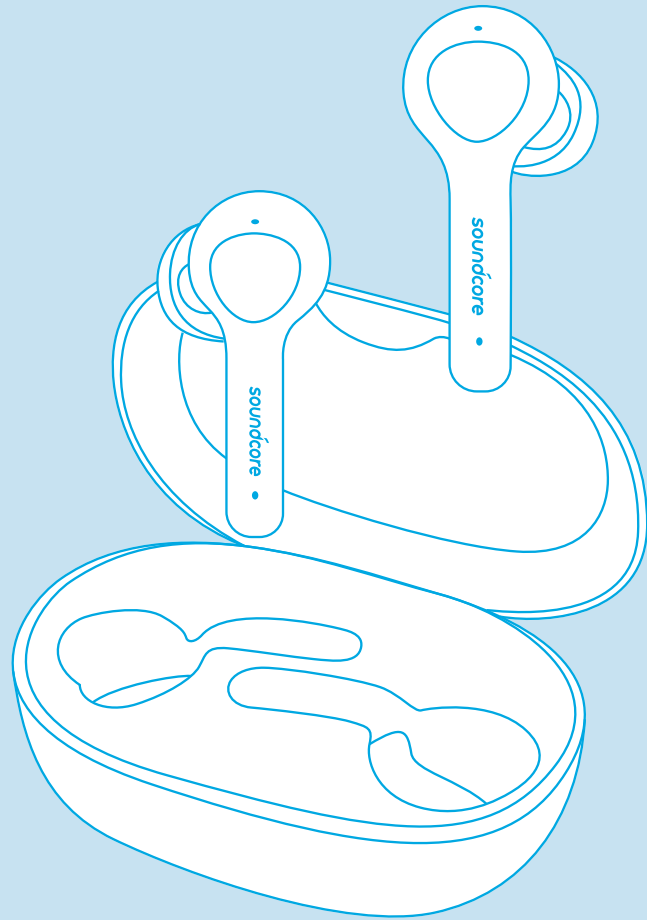


soundcore

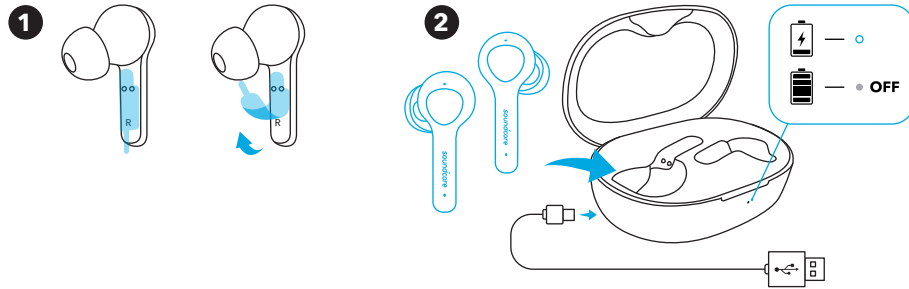


Soundcore Life Note  
**USER MANUAL**

English	01	Português	66
Čeština	06	Русский	71
Dansk	11	Slovenský Jazyk	76
Deutsch	17	Slovenski Jezik	81
ελληνικά	21	Svenska	86
Español	26	Türkçe	91
Suomi	31	日本語	96
Français	36	한국어	101
Magyar	41	简体中文	106
Italiano	10	繁體中文	111
Nederlands	51	Portugues do Brasil	116
Norsk	56	العَرَبِيَّة	121
Język polski	61	תִּירָב	126

## Charging

- Remove the protective film from the earbuds when using for the first time.
- Fully charge both the earbuds and the charging case before the first-time using.
- To prevent damage, use the provided USB-C cable.
- Fully dry off the earbuds and the USB port before charging.

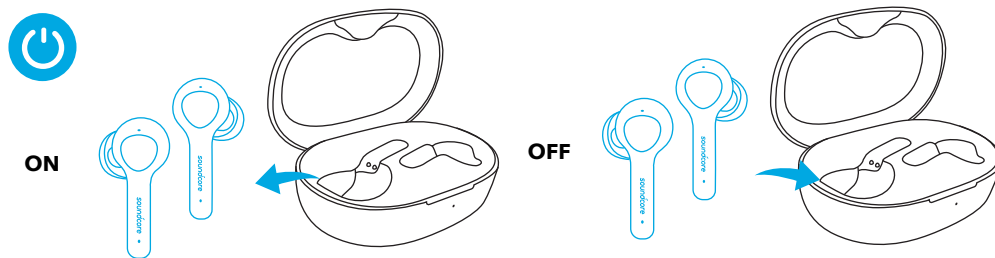


### LED behavior (Earbuds & Charging case)

<input type="radio"/>	Steady white	Being Charging
<input checked="" type="radio"/>	Light off	<ul style="list-style-type: none"> <li>Fully charged</li> <li>Remaining battery &gt;10% (when in use)</li> </ul>

## Powering On/Off

The earbuds will automatically power on when taken out of the charging case and power off when placed back into the charging case.



### LED behavior (Earbuds)

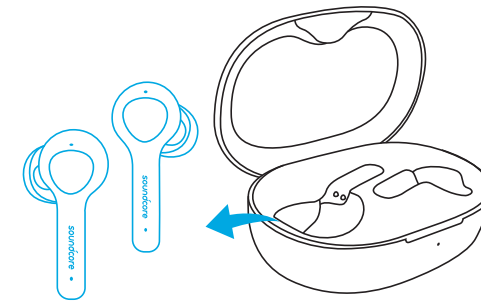
ON	<input type="radio"/>	Steady white for 1 second
OFF	<input checked="" type="radio"/>	Steady red for 1 second

- To manually power on, press the multi-function button on either one of the earbuds.
- To manually power off, press and hold the multi-function button on either one of the earbuds for 3 seconds.

## Pairing

### True Wireless Stereo Connection

The right earbud will automatically connect with the left earbud when taken out of the charging case.



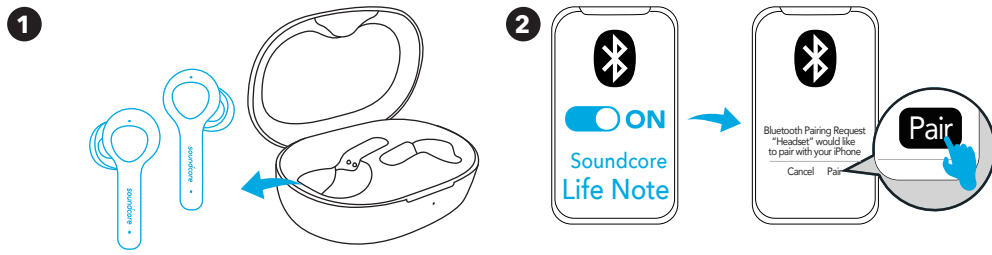
### LED behavior (Earbuds)

<input checked="" type="radio"/>	Breathing white	TWS connecting
<input type="radio"/>	Steady white for 1 second	TWS connected

- When powered off, press and hold the multi-function button on both earbuds for 1 second, the earbuds will enter TWS connecting mode.
- When powered on and connected, place either one of the earbuds into the charging case, you can keep using the other one.
- When powered on and connected, if either one of the earbuds is out of battery and powered off, you can keep using the other one.
- When you are on a call, place either one of the earbuds into the charging case, 3 to 5 seconds later, the microphone in the other earbud will be activated.

## Bluetooth Pairing with your Device

The earbuds will enter pairing mode when powered on. You are requested to confirm the connection when you see a pop-up.



### LED behavior (Earbuds)

	Flashing white	Bluetooth pairing
	Steady white for 1 second	Bluetooth connected

In the pairing process, some devices are incompatible with Qualcomm True Wireless Primary-Secondary dual pairing names, it may notice "connection unsuccessful" when you tap "Pair" or even no screen popped up. Don't worry and it will not influence the using.

Once successfully paired, the primary earbud connects with your device and transfers signal to the secondary earbud, the latter one will not connect with your device. As a result, in the Bluetooth pairing list on your device, it may indicate that only one side is connected while the other side is not.

<b>BLUETOOTH</b>	
Soundcore XXX	Connected
Soundcore XXX-L	Not Connected

- To pair with another Bluetooth device, turn off Bluetooth on the currently connected device first.
- Each time you power on your Soundcore earphones, it will automatically connect to your last successfully connected device if available within the Bluetooth range.

### Wearing

1. Choose the ear tips that fit your ears the best.
2. Insert the earbuds into the inner canal of your ears.
3. Turn and find the most comfortable position.

### Controls

Play / Pause		Press (R/L)
Next track		Press twice (R)
Previous track		Press twice (L)
Volume up / down	Control volume via the connected device	

Answer / End a call		Press (R/L)
Reject a call		Press and hold for 1 second (R/L)
Enable mono mode	Remove either one of the earbuds off your ear and press and hold the button on the other earbud for 1 second	

Activate Siri or other voice assistant software		Press and hold for 1 second (R/L)

### Reset

Reset the earbuds if the earbuds cannot connect with each other properly or cannot connect with your device properly.

1. Place the earbuds into the charging case and make sure they are being charged.
2. Press and hold the button on both earbuds for 3 seconds until the LED indicators flash red 3 times and then turn white.  
→ All the memory data will be cleared.

# Obsah je uzamčen

**Dokončete, prosím, proces objednávky.**

**Následně budete mít přístup k celému dokumentu.**



**Proč je dokument uzamčen? Nahněvat Vás rozhodně nechceme. Jsou k tomu dva hlavní důvody:**

- 1) Vytvořit a udržovat obsáhlou databázi návodů stojí nejen spoustu úsilí a času, ale i finanční prostředky. Dělali byste to Vy zadarmo? Ne\*. Zakoupením této služby obdržíte úplný návod a podpoříte provoz a rozvoj našich stránek. Třeba se Vám to bude ještě někdy hodit.

*\*) Možná zpočátku ano. Ale vězte, že dotovat to dlouhodobě nelze. A rozhodně na tom nezbohatneme.*

- 2) Pak jsou tady „roboti“, kteří se přiživují na naší práci a „vysávají“ výsledky našeho úsilí pro svůj prospěch. Tímto krokem se jim to snažíme překazit.

A pokud nemáte zájem, respektujeme to. Urgujte svého prodejce. A když neuspějete, rádi Vás uvidíme!