

[Skip to content](#)

Manuals+

User Manuals Simplified.



JLABAUDIO JBuds Air Sport Earbuds User Manual

Home » [JLABAUDIO](#) » JLABAUDIO JBuds Air Sport Earbuds User Manual 



JBUDS AIR SPORT EARBUDS

We love that you are rocking JLab Audio!
We take pride in our products and fully stand behind them.



YOUR SATISFACTION IS GUARANTEED

You may exchange or return merchandise within 30 days of the purchase date.
Learn more at [jlabaudio.com/guarantee](https://www.jlabaudio.com/guarantee)



YOUR WARRANTY

You may register your product at [jlabaudio.com/register](https://www.jlabaudio.com/register). All warranty claims are subject to JLab Audio authorization and at our sole discretion. Retain your proof of purchase to ensure warranty coverage.



CONTACT US

Reach out to us at support@jlabaudio.com or visit [jlabaudio.com/contact](https://www.jlabaudio.com/contact)

Contents [[hide](#)]

- 1 FIRST TIME SETUP
- 2 IN THE BOX
- 3 BUTTON FUNCTIONS
- 4 VOICE PROMPTS
- 5 EQUALIZER MODES
- 6 CHARGING EARBUDS
- 7 CHARGING CASE
- 8 TROUBLESHOOTING
- 9 QUICK TIPS
- 10 WARNING
- 11 WARM-UP YOUR HEADPHONES
- 12 CAUTIONS
- 13 File Downloads
- 14 References
- 15 Related Manuals

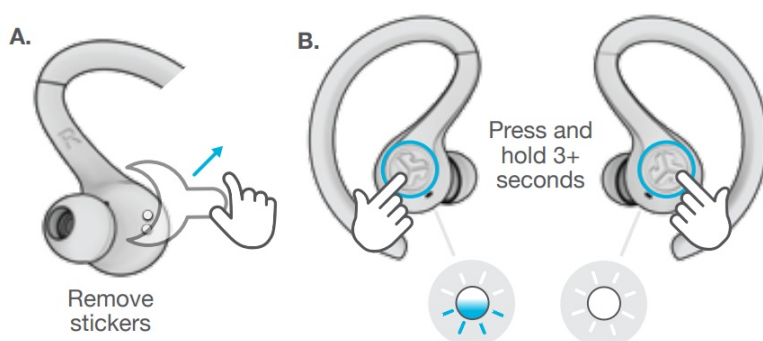
FIRST TIME SETUP

1. AUTO-CONNECTING EARBUDS

A. Take earbuds out of the charging case and remove stickers.

B. Press and hold both touch sensors 3+ seconds to turn ON.

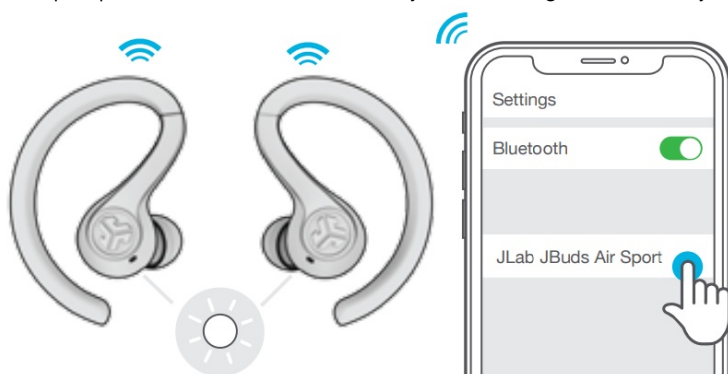
The left earbud turns **solid white** and the Right earbud blinks **blue/white** indicating ready to pair to your device.



2. CONNECTING TO BLUETOOTH

Select "JLab JBuds Air Sport" in your device settings.

Voice prompt "Bluetooth connected" followed by **solid white lights** will indicate you are connected.

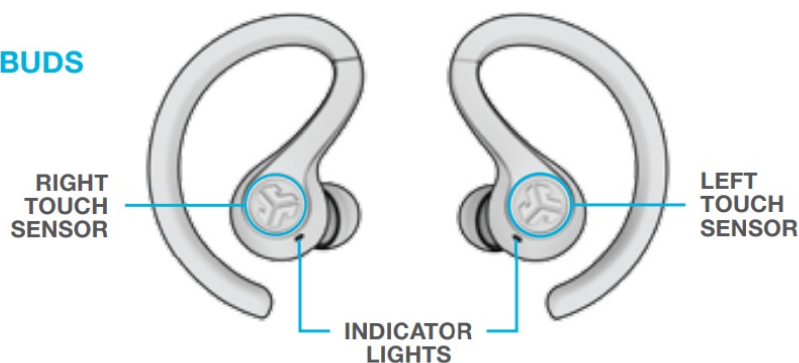


ADDING NEW / ADDITIONAL BLUETOOTH DEVICES:

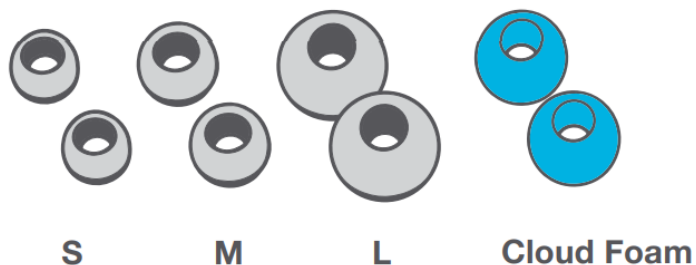
Turn OFF Bluetooth from any previously connected device. **Turn ON Bluetooth** from the new device. Take earbuds out of the case. Earbuds will automatically enter Bluetooth Pairing. Select "JLab JBuds Air Sport" in device settings to connect.

IN THE BOX

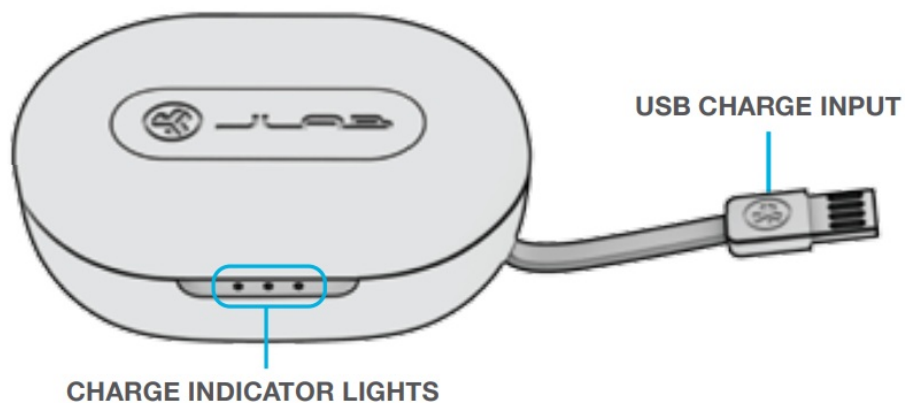
EARBUDS



EARTIPS



CHARGING CASE



BUTTON FUNCTIONS



VOLUME DOWN: Single tap.

SIRI (iOS) or "OK GOOGLE"

(ANDROID): Double-tap.

TRACKBACK: Press & hold 1+ sec.

EQ CHANGE: Triple tap. (JBuds Air Sport will cycle 3 EQ settings)

POWER ON: Press & hold 3+ sec.

VOLUME UP: Single tap.

PLAY / PAUSE: Double-tap.

TRACK FORWARD: Press & hold 1+ sec.

ANSWER: Single tap.

HANG UP: Double-tap.

REJECT INCOMING CALLS: Press & hold 1+ sec.

BE AWARE ON / OFF: Triple tap.

POWER ON: Press & hold 3+ sec.

VOICE PROMPTS

"Hello": Power ON

"Earbuds joined": Earbuds paired to each other

"Ready to Pair": JBuds Air Sport are ready to pair to Bluetooth device

"Bluetooth Connected": Earbud is connected to the device

"Battery Full": 100-80%

"Battery Medium": 80-20%

"Low Battery": Less than 20%

When power decreases to 10%,

"Low Battery" will play

"Goodbye": Power OFF

TURN OFF EARBUDS WITHOUT CHARGING CASE:

Enter your Bluetooth device settings and disconnect the JBuds Air Sport. Earbuds will power OFF after 3 minutes.

EQUALIZER MODES

Triple tap left earbud for different EQ settings. Voice prompts will indicate EQ settings (JBuds Air Sport will cycle 3 EQ settings)

Obsah je uzamčen

**Dokončete, prosím, proces objednávky.
Následně budete mít přístup k celému dokumentu.**



Proč je dokument uzamčen? Nahněvat Vás rozhodně nechceme. Jsou k tomu dva hlavní důvody:

- 1) Vytvořit a udržovat obsáhlou databázi návodů stojí nejen spoustu úsilí a času, ale i finanční prostředky. Dělali byste to Vy zadarmo? Ne*. Zakoupením této služby obdržíte úplný návod a podpoříte provoz a rozvoj našich stránek. Třeba se Vám to bude ještě někdy hodit.

**) Možná zpočátku ano. Ale vězte, že dotovat to dlouhodobě nelze. A rozhodně na tom nezbohatneme.*

- 2) Pak jsou tady „roboti“, kteří se přiživují na naší práci a „vysávají“ výsledky našeho úsilí pro svůj prospěch. Tímto krokem se jim to snažíme překazit.

A pokud nemáte zájem, respektujeme to. Urgujte svého prodejce. A když neuspějete, rádi Vás uvidíme!