

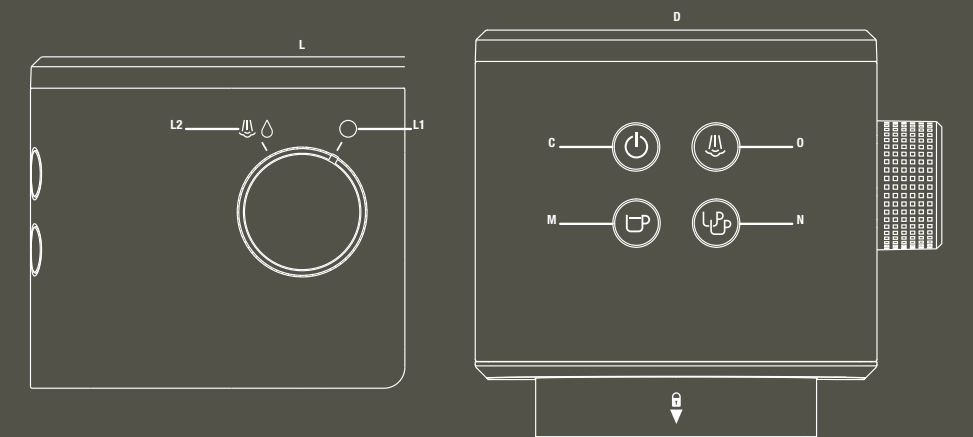
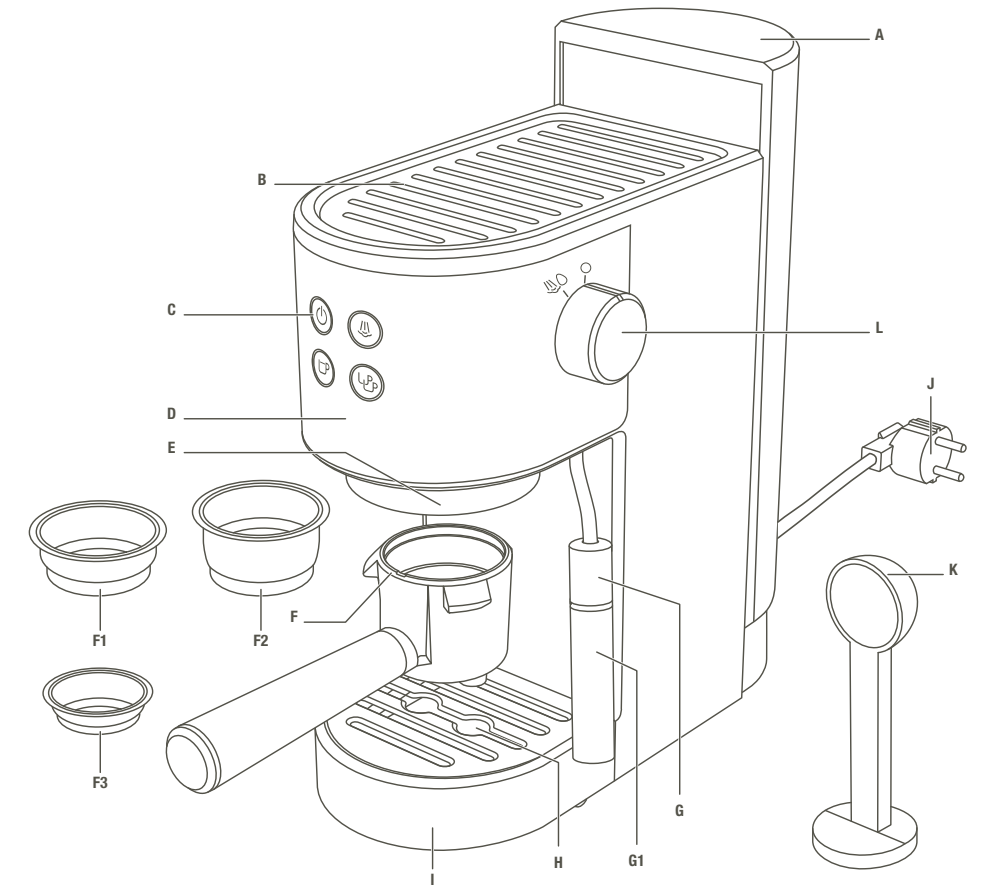
EN..... P. 01 – 12  
 FR..... P. 13 – 20  
 DE..... P. 21 – 30  
 IT..... P. 31 – 40  
 ES..... P. 41 – 50  
 PT..... P. 51 – 60  
 CZ..... P. 61 – 70  
 SK..... P. 71 – 80  
 HU ..... P. 81 – 90  
 PL..... P. 91 – 100  
 RO ..... P. 101 – 110  
 BG ..... P. 111 – 120  
 HR ..... P. 121 – 130  
 SL..... P. 131 – 140  
 RU ..... P. 141 – 150  
 NL..... P. 151 – 160  
 UK..... P. 161 – 170

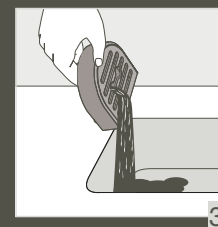
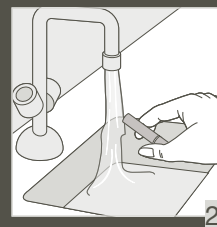
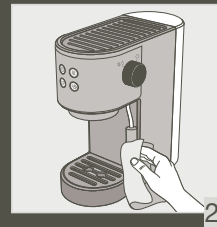
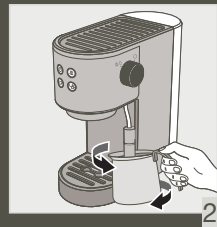
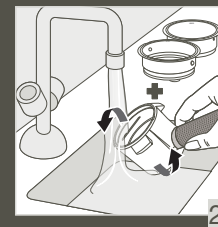
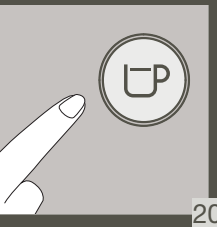
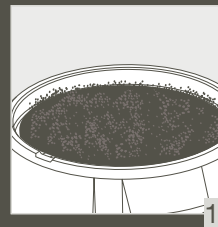
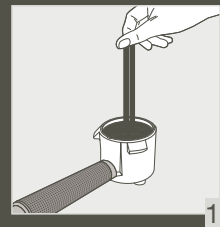
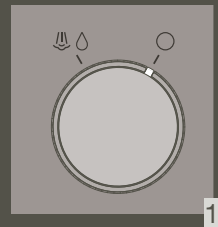
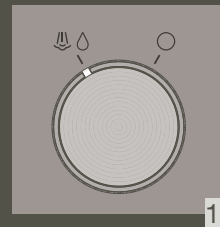
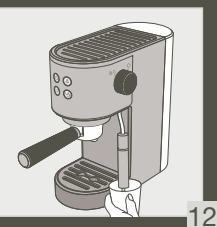
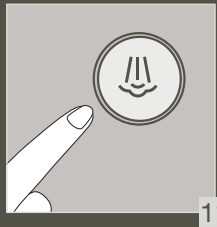
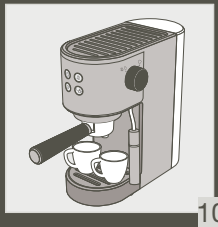
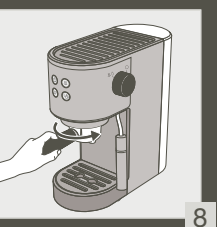
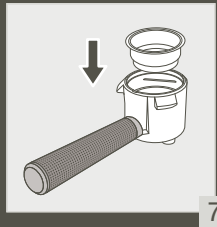
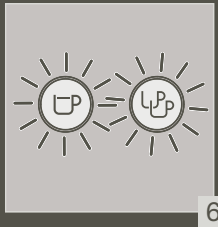
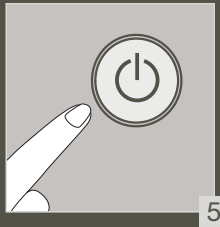
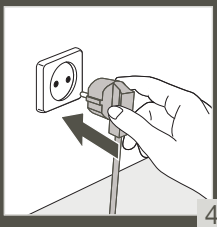
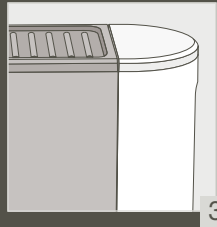
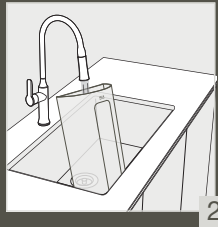
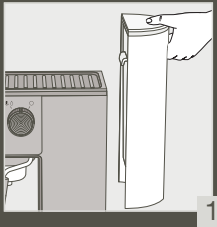
# KRUPS

Pump espresso Virtuoso XP442



EN  
FR  
DE  
IT  
ES  
PT  
CZ  
SK  
HU  
PL  
RO  
BG  
HR  
SL  
RU  
NL  
UK





## DESCRIPTION

- |                                  |   |
|----------------------------------|---|
| <b>A</b> Removable water tank    | <b>H</b> Drip tray grill                  |
| <b>B</b> Cup holder tray         | <b>I</b> Drip tray                        |
| <b>C</b> On/Off button           | <b>J</b> Power cord                       |
| <b>D</b> Control panel           | <b>K</b> Spoon-tamper                     |
| <b>E</b> Filter holder head      | <b>L</b> Knob                             |
| <b>F</b> Filter holder           | <b>L1</b> Position O: preheat             |
| <b>F1</b> Filter 1 cup           | <b>L2</b> Hot water and steam preparation |
| <b>F2</b> Filter 2 cups          | <b>M</b> 1 cup Espresso button            |
| <b>F3</b> Filter for coffee pods | <b>N</b> 2 cups Espresso button           |
| <b>G</b> Steam nozzle            | <b>O</b> Steam button                     |
| <b>G1</b> Foam nozzle            |   |

## TECHNICAL SPECIFICATIONS

- Pump: 15 bar
- Accessories: 3 cup filters (1cup, 2cups, and soft pod), measuring spoon/tamper
- Steam function
- Removable tank (1 L capacity)
- Power: 1400W
- Voltage: 220 - 240 V
- Safety devices against overheating
- Dimensions: 280 x143 x 285 mm
- Automatic shut down after 30 minutes



### IMPORTANT!

Operating voltage: this appliance is designed to operate at 230 V alternating current only.

Type of use: this appliance is designed for DOMESTIC USE ONLY

## HELPFUL TIPS

Use of freshly roasted coffee is recommended. Contact your coffee roaster for advice. The freshness of the coffee only lasts several weeks after roasting. Good packaging can improve and prolong the flavour of the coffee. If you are unsure of the quality of the packaging, choose a recently roasted coffee.

### What coffee should you choose?

- For an aromatic coffee

Choose pure Arabica coffees or those composed mostly of Arabica coffee.

Artisan roasted coffees are preferred as they lend a better complexity and delicateness to the flavour. For a variety of flavours, try pure origin coffees.

- For an intense coffee

Choose coffees blended with Robusta – not specifically 100% Arabica – or Italian-roasted coffees or specific Italian-flavoured coffees.

# Obsah je uzamčen

**Dokončete, prosím, proces objednávky.**

**Následně budete mít přístup k celému dokumentu.**



**Proč je dokument uzamčen? Nahněvat Vás rozhodně nechceme. Jsou k tomu dva hlavní důvody:**

- 1) Vytvořit a udržovat obsáhlou databázi návodů stojí nejen spoustu úsilí a času, ale i finanční prostředky. Dělali byste to Vy zadarmo? Ne\*. Zakoupením této služby obdržíte úplný návod a podpoříte provoz a rozvoj našich stránek. Třeba se Vám to bude ještě někdy hodit.

*\*) Možná zpočátku ano. Ale vězte, že dotovat to dlouhodobě nelze. A rozhodně na tom nezbohatneme.*

- 2) Pak jsou tady „roboti“, kteří se přiživují na naší práci a „vysávají“ výsledky našeho úsilí pro svůj prospěch. Tímto krokem se jim to snažíme překazit.

A pokud nemáte zájem, respektujeme to. Urgujte svého prodejce. A když neuspějete, rádi Vás uvidíme!