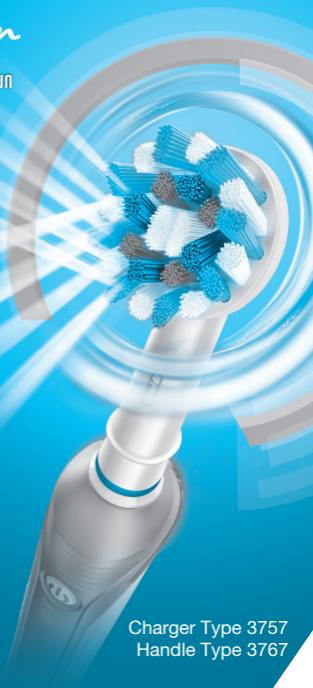


Oral-B®

SMART / Teen

powered by BRAUN



Charger Type 3757
Handle Type 3767



10982816



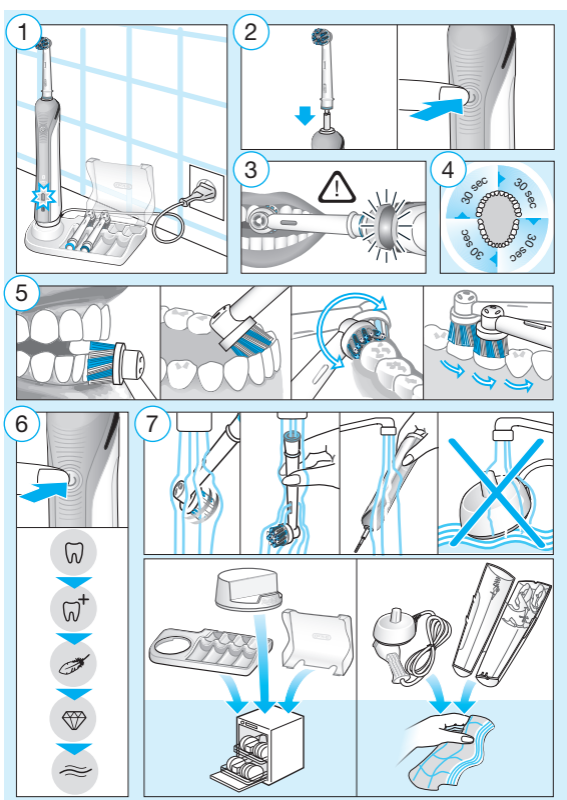
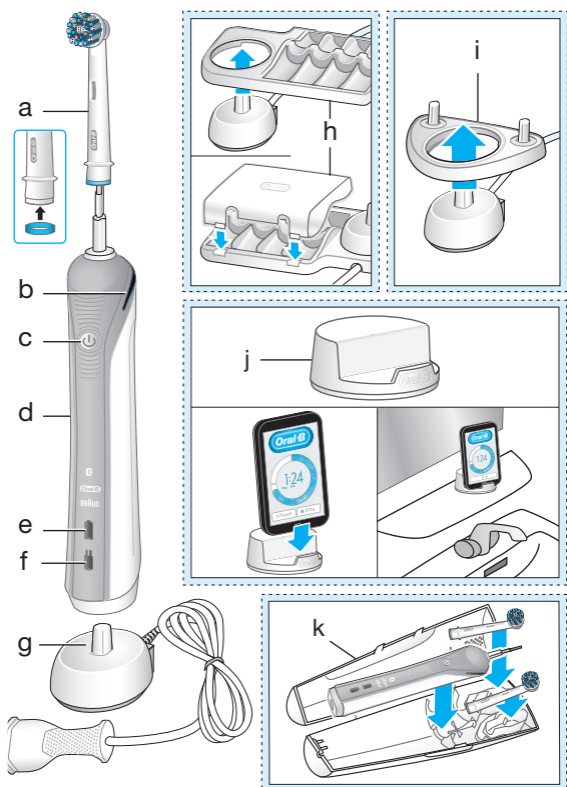
- GB** 0 800 731 1792
- IE** 1 800 509 448
- CZ** 800 11 33 22
- SK** 800 333 233
- SI** 080 2822
- LT** (8 5) 205 1272
- IL** 1-800-666-775

Internet:

www.oralb.com
www.braun.com
www.service.braun.com

Braun GmbH
Frankfurter Straße 145
61476 Kronberg/Germany

Charger type 3757
Handle type 3767



English

Welcome to Oral-B!

Before operating this toothbrush, please read these instructions and save this manual for future reference.

IMPORTANT

- Periodically check the entire product/cord for damage. A damaged or non-functioning unit should no longer be used. If the product/cord is damaged, take it to an Oral-B Service Centre. Do not modify or repair the product. This may cause fire, electric shock or injury.
- Usage by children under age 3 is not recommended. Toothbrushes can be used by children and persons with reduced physical, sensory or mental capabilities or lack of experience and knowledge, if they have been given supervision or instruction concerning use of the appliance in a safe way and understand the hazards involved.
- Cleaning and maintenance shall not be performed by children.
- Children shall not play with the appliance.

- Use this product only for its intended use as described in this manual. Do not use attachments which are not recommended by the manufacturer.

WARNING

- If the product is dropped, the brush head should be replaced before the next use even if no damage is visible.
- Do not place the charger in water or liquid or store where it can fall or be pulled into a tub or sink. Do not reach for it when fallen into water. Unplug immediately.
- Do not open and disassemble device. For battery recycling please dispose whole device according to local environmental regulations. Opening the handle will destroy the appliance and invalidate the warranty.
- When unplugging, always hold the power plug instead of the cord. Do not touch the power plug with wet hands. This can cause an electric shock.
- If you are undergoing treatment for any oral care condition, consult your dental professional prior to use.
- This toothbrush is a personal care device and is not intended for use on multiple patients in a dental practice or institution.
- Replace brush (head) every 3 months or sooner if brush head becomes worn.

Important Information

- Your Oral-B toothbrush can be used with your smartphone (find details under «Connecting your toothbrush to your Smartphone»).
- To avoid electromagnetic interference and/or compatibility conflicts, deactivate the radio transmission before using it in restricted surroundings, such as aircrafts or specially marked areas in hospitals. Deactivate radio transmission when your toothbrush is turned off by pressing the on/off button (c) for 3 seconds. All indicator lights (b, e & f) will flash simultaneously. Follow the same procedure to reactivate transmission again. Note: Every time you turn your toothbrush off, when using it without radio transmission, the indicator lights will flash simultaneously.
- Persons with pacemakers should always keep the toothbrush more than six inches (15 centimeters) from the pacemaker while turned on. Anytime you suspect interference is taking place, deactivate the radio transmission of your toothbrush.

Description

- a Brush head
- b Pressure sensor light
- c On/off button (mode selection)
- d Handle (with *Bluetooth*[®] wireless technology)
- e Charge indicator light
- f Low charge indicator light
- g Charger

Accessories (depending on model):

- h Brush head compartment with protective cover
- i Brush head holder
- j Smartphone holder
- k Travel case

Note: Content may vary based on the model purchased.

Specifications

For voltage specifications refer to the bottom of the charging unit.
Noise level: 68 dB (A)

Charging and Operating

Your toothbrush has a waterproof handle, is electrically safe and designed for use in the bathroom.

- You may use your toothbrush right away or charge it briefly by placing it on the plugged-in charger (g).
Note: In case the battery is empty (no charging light illuminated (e) while charging or no reaction when pressing the on/off button (c)), charge at least for 30 minutes.
- The green charge indicator light (e) flashes while the handle is being charged. Once it is fully charged, the light turns off. A full charge takes typically 15 hours and enables at least 2 weeks of regular brushing (twice a day, 2 minutes) (picture 1).
Note: After deep discharge, the charge indicator light might not flash immediately; it can take up to 30 minutes.
- If the battery is running low, the red charge indicator light (f) is flashing for a few seconds when turning your toothbrush on/off and the motor is reducing its speed. Once the battery is empty, the motor will stop; it will need at least a 30-minute charge for one usage.
- You can always store the handle on the plugged-in charging unit to maintain it at full power; a battery overcharge is prevented by device.
Note: Store handle at room temperature for optimal battery maintenance.
Caution: Do not expose handle to temperatures higher than 50 °C.

Using your toothbrush

Brushing technique

Wet brush head and apply any kind of toothpaste. To avoid splashing, guide the brush head to your teeth before switching on the appliance (picture 2). When brushing your teeth with one of the Oral-B **oscillating-rotating brush heads** guide the brush head slowly from tooth to tooth, spending a few seconds on each tooth surface (picture 5). With any brush head start brushing the outsides, then the insides and finally the chewing surfaces. Brush all four quadrants of your mouth equally. You may also consult your dentist or dental hygienist about the right technique for you.

In the first days of using any electric toothbrush, your gums may bleed slightly. In general, bleeding should stop after a few days. Should it persist after 2 weeks, please consult your dentist or dental hygienist. If you have sensitive teeth and/or gums, Oral-B recommends using the «Sensitive» mode (optional in combination with an Oral-B «Sensitive» brush head).

Brushing modes (depending on model)

1-mode	2-modes	3-modes	4-modes	5-modes	Brushing modes (for handle type 3767)
✓	✓	✓	✓	✓	Daily Clean – Standard for daily mouth cleaning
				✓	Pro Clean – For an extraordinary clean feeling (operated with a higher frequency)

Obsah je uzamčen

Dokončete, prosím, proces objednávky.

Následně budete mít přístup k celému dokumentu.



Proč je dokument uzamčen? Nahněvat Vás rozhodně nechceme. Jsou k tomu dva hlavní důvody:

- 1) Vytvořit a udržovat obsáhlou databázi návodů stojí nejen spoustu úsilí a času, ale i finanční prostředky. Dělali byste to Vy zadarmo? Ne*. Zakoupením této služby obdržíte úplný návod a podpoříte provoz a rozvoj našich stránek. Třeba se Vám to bude ještě někdy hodit.

**) Možná zpočátku ano. Ale vězte, že dotovat to dlouhodobě nelze. A rozhodně na tom nezbohatneme.*

- 2) Pak jsou tady „roboti“, kteří se přiživují na naší práci a „vysávají“ výsledky našeho úsilí pro svůj prospěch. Tímto krokem se jim to snažíme překazit.

A pokud nemáte zájem, respektujeme to. Urgujte svého prodejce. A když neuspějete, rádi Vás uvidíme!