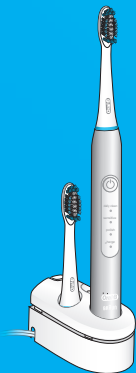




powered
by **BRAUN**

PULSONIC

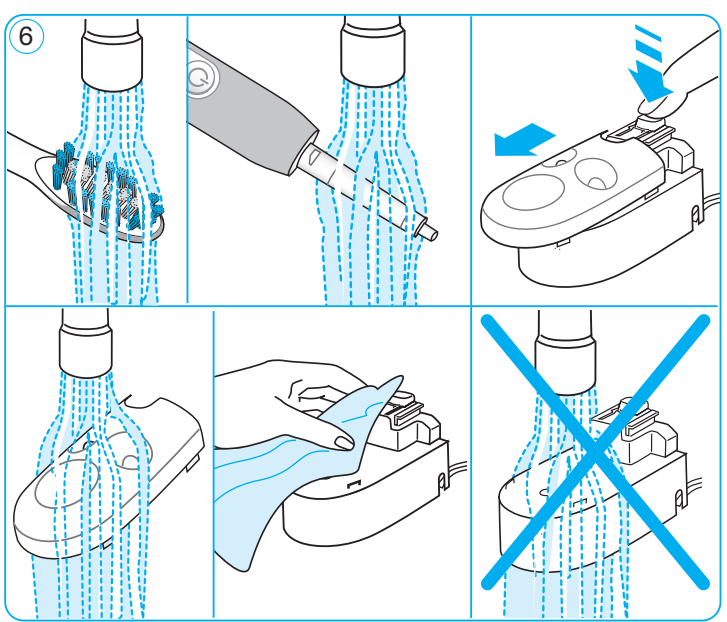
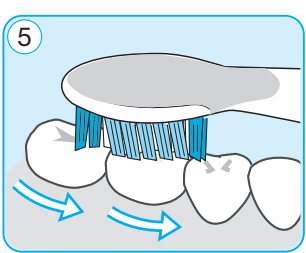
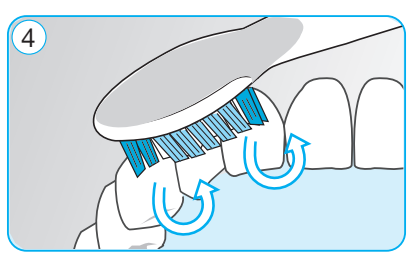
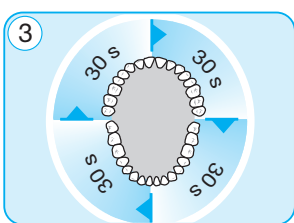
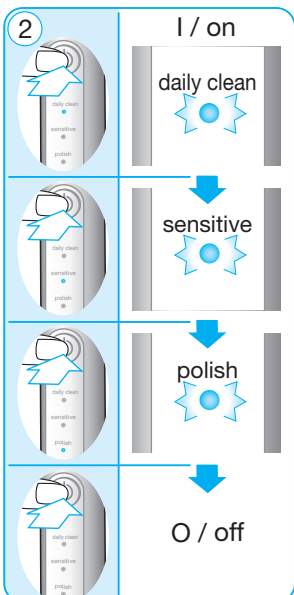
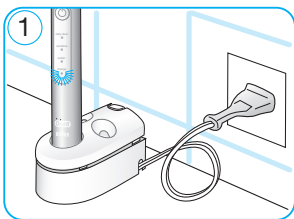
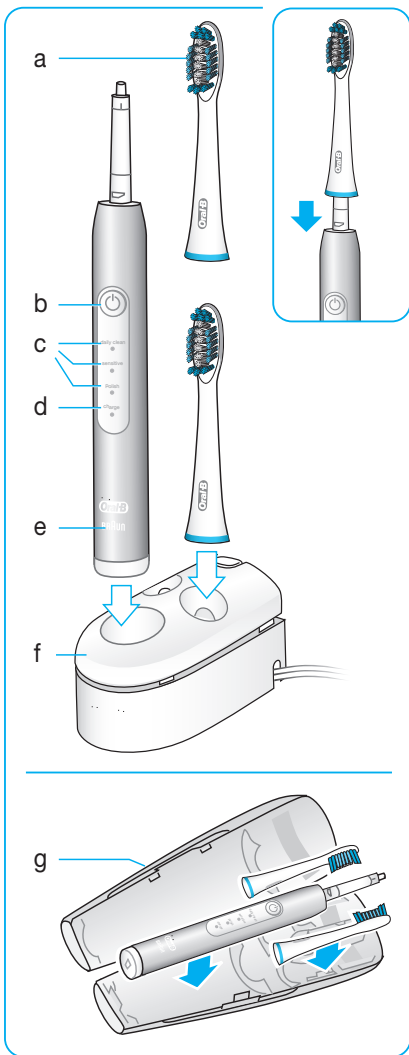
2000-4000



Charger Type 3747
Handle Type 3717



01801616



English	3
Polski	4
Český	6
Slovenský	7
Magyar	9
Hrvatski	11
Slovenski	12
Lietuvių	14
Latviski	15
Eesti	16

(UK)	0 800 731 1792
(IE)	1 800 509 448
(PL)	801 127 286 801 1 BRAUN
(CZ)	800 11 33 22
(SK)	800 333 233
(HU)	(06-1) 451-1256
(HR)	01/66 90 330
(SI)	080 2822
(LT)	(8 5) 205 1272
(LV)	67798667
(EE)	667 5047

Internet:
www.oralb.com
www.braun.com
www.service.braun.com

Braun GmbH
 Frankfurter Straße 145
 61476 Kronberg/Germany

Charger Type 3747
Handle Type 3717

English

Welcome to Oral-B!

Please read the use instructions carefully before first use.

IMPORTANT

- Periodically check the entire product/cord for damage. A damaged or non-functioning unit should no longer be used. If the product/cord is damaged, take it to an Oral-B Service Centre. Do not modify or repair the product. This may cause fire, electric shock or injury.
- Usage by children under age 3 is not recommended. Toothbrushes can be used by children and persons with reduced physical, sensory or mental capabilities or lack of experience and knowledge, if they have been given supervision or instruction concerning use of the appliance in a safe way and understand the hazards involved.
- Cleaning and maintenance shall not be performed by children.
- Children shall not play with the appliance.
- Use this product only for its intended use as described in this manual. Do not use attachments which are not recommended by the manufacturer. Only use charger provided with the appliance.

WARNING

- Do not place the charger in water or liquid or store where it can fall or be pulled into a tub or sink. Do not reach for it when fallen into water. Unplug immediately.
- This appliance contains batteries that are non-replaceable. Do not disassemble the product except when disposing of the battery. When taking out the battery for disposal of the unit, use caution so as not to short the positive (+) and negative (-) terminals.
- When unplugging, always hold the power plug instead of the cord. Do not touch the power plug with wet hands. This can cause an electric shock.
- If you are undergoing treatment for any oral care condition, consult your dental professional prior to use.
- This toothbrush is a personal care device and is not intended for use on multiple patients in a dental practice or institution.

To avoid brush head breakage which may generate a small parts choking hazard or damage teeth:

- Prior to each use, ensure the brush head fits well. Discontinue use of the toothbrush, if brush head no longer fit properly. Never use without a brush head.
- If the toothbrush handle is dropped, the brush head should be replaced before the next use even if no damage is visible
- Replace brush head every 3 months or sooner if brush head becomes worn.
- Clean brush head properly after each use (see «Cleaning recommendations» paragraph). Proper cleaning ensures the safe use and functional life of the toothbrush.

Description

- a Oral-B Pulsonic brush head
- b On/off button
- c Mode indicators
- d Charge indicator
- e Handle
- f Charging unit with handle stand and release button

Accessories (depending on model):

- g Travel case

Note: Content may vary based on the model purchased.

Specifications

For voltage specifications refer to the bottom of the charging unit.

Noise level: ≤ 65 dB (A)

Charging and Operating

Your toothbrush is electrically safe and designed for use in the bathroom.

- Plug the charging unit (f) into an electrical outlet and place the handle (e) on the charging unit (picture 1).
- During charging the green indicator light (d) illuminates. Once the toothbrush is fully charged the light turns off. A full charge can take up to 24 hours and enables up to seven days of regular brushing (twice a day, 2 minutes).
- For everyday use, the handle can be stored on the plugged-in charging unit to maintain it at full power. Overcharging is impossible.
- To maintain the maximum capacity of the rechargeable battery, unplug the charging unit and fully discharge the handle with regular use at least every 6 months.

Using your toothbrush

Brushing technique

- Slide the brush head on the handle. Wet brush head and apply any kind of toothpaste. To avoid splashing, guide the brush head to your teeth before switching on your toothbrush.
- Place the brush head on the outside surface of your upper teeth. The toothbrush bristles should be placed against the teeth at a slight angle towards the gumline.
- Turn your toothbrush on and start brushing in a slightly circular motion (picture 4/5). Apply light pressure during brushing. After a few seconds, guide the bristles to the next section. Brush inside, outside and chewing surfaces of your teeth with the same motion throughout the mouth for the recommended 2 minutes.
- To avoid splashing, turn your toothbrush off before removing from the mouth by pressing the on/off button (b).

You may experience a slight tickling or tingling sensation when you first use your Oral-B toothbrush. This will subside as your teeth and gums will become accustomed to the cleaning experience. If you feel this initial tingling, you may want to brush in «Sensitive» mode first (depending on model).

In the first few days of using any electric toothbrush, your gums may bleed slightly. In general, bleeding should stop after a few days. Should it persist after 2 weeks, please consult your dentist or your dental hygienist.

Brushing modes (depending on model)

Your Oral-B toothbrush offers different brushing modes for varying oral care needs:

«Daily Clean» – Gentle, effective mouth cleaning.

«Sensitive» – Gentle cleaning for sensitive areas.

«Polish» – Polishing for occasional or everyday use.

When pressing the on/off button (b), your toothbrush automatically starts in «Daily Clean» mode. To switch to other modes, successively press the on/off button. Switch off the toothbrush by pressing the on/off button until the motor stops (picture 2).

Timer

A short stuttering sound at 30-second intervals (one break) reminds you to brush all four quadrants of your mouth equally (picture 3). A long stuttering sound (two breaks) indicates the end of the professionally recommended 2-minute brushing time.

Brush head

Oral-B Pulsonic brush head

The Oral-B Pulsonic brush head (a) is recommended for everyday deep cleaning. Its bristles provide a thorough cleaning between your teeth, tooth surfaces and along the gumline.

The blue indicator bristles help you to monitor brush head replacement need. With proper brushing, twice a day for two minutes, the blue color will fade halfway approximately within 3 months, signalling it is time to replace your brush head.

Cleaning recommendations

Switch off the handle and remove the brush head. Rinse both brush head and handle thoroughly under running water. Wipe them dry before reassembling and placing the handle on the charging unit. Charging unit (f) and travel case (g) should be cleaned with a damp cloth only. For thorough cleaning you may remove the handle stand by pushing the release button on top of the charging

Obsah je uzamčen

Dokončete, prosím, proces objednávky.

Následně budete mít přístup k celému dokumentu.



Proč je dokument uzamčen? Nahněvat Vás rozhodně nechceme. Jsou k tomu dva hlavní důvody:

- 1) Vytvořit a udržovat obsáhlou databázi návodů stojí nejen spoustu úsilí a času, ale i finanční prostředky. Dělali byste to Vy zadarmo? Ne*. Zakoupením této služby obdržíte úplný návod a podpoříte provoz a rozvoj našich stránek. Třeba se Vám to bude ještě někdy hodit.

**) Možná zpočátku ano. Ale vězte, že dotovat to dlouhodobě nelze. A rozhodně na tom nezbohatneme.*

- 2) Pak jsou tady „roboti“, kteří se přiživují na naší práci a „vysávají“ výsledky našeho úsilí pro svůj prospěch. Tímto krokem se jim to snažíme překazit.

A pokud nemáte zájem, respektujeme to. Urgujte svého prodejce. A když neuspějete, rádi Vás uvidíme!