

USER MANUAL
BENUTZERHANDBUCH
PODRĘCZNIK UŻYTKOWNIKA
UŽIVATELSKÝ MANUÁL
POUŽÍVATEĽSKÝ MANUÁL



EN ERGONOMIC OPTICAL MOUSE
DE ERGONOMIC OPTICAL MOUSE
PL ERGONOMICZCNA MYSZ OPTYCZNA
CZ ERGONOMICKÁ OPTICKÁ MYŠ
SK ERGONOMICKÁ OPTICKÁ MYŠ

CMO-2700-BK • CMO-2700-WH • CMO-2700-BL • CMO-2700-RD



THANK YOU FOR BUYING A CONNECT IT PRODUCT.

Do you want to be the first to know about other news of **CONNECT IT**? Follow us on social media.



#connectit

- Before putting this product into operation please read through the User's Manual carefully, even if you are already familiar with the use of similar products. Use the product only as described in this User's Manual.
- Keep this User's Manual for future reference. It is an integral part of the product and may contain important instructions for commissioning this product, its operation and cleaning.
- Make sure that all other people handling this product are familiar with this Manual. If you hand the product over to other people, make sure that they read this User's Manual, which shall be given to them together with the product.

We recommend keeping the original packaging of the product, proof of purchase and the warranty card, if supplied, at least for the warranty period. In case of transport, we recommend packing the product in the original packaging, in which it has been delivered in, as it protects it best against damage during transport.

Scan this QR code to get the latest version of the User's Manual. In your smartphone, open the QR code reader application and point the smartphone at this code – the page for downloading the latest version of the User's Manual will open:



You can also find the latest version of the User's Manual on our website www.connectit-europe.com

The text and technical specifications are subject to change.



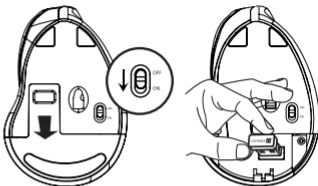
1 Specification

- 2.4 GHz wireless technology
- Operating range: up to 10 m
- Six buttons including scroll wheel
- Resolution: 800/1200/1600 DPI
- Dimensions: 110 x 76 x 72 mm
- Interface: USB 1.1 and higher
- Easy Plug & Play installation
- Power: 1x AA battery (included)

Compatibility:

- Operating system: Microsoft Windows XP/ Vista/7/8/10 and Mac OS

This product is compatible with Mac OS although some features unsupported by Mac OS may not work properly.



2 Instructions

Installation of batteries:

1. Remove the battery cover on the bottom side of the mouse.
2. Insert 1x AA battery into the mouse and be sure that you are inserting the battery in correct direction according to their polarity.
3. Close the battery cover.
4. Shift the switch on the bottom side of the mouse to ON position.

Installation of USB receiver to the computer:

Insert the USB receiver to the available USB port and wait for automatic installation of drivers.

3 Troubleshooting

- We recommend connecting this device straight to a USB port on your computer.
- If this device is plugged in to a USB hub, make sure that the USB hub and the USB port to which it is connected can provide this device and other devices connected to the same USB hub with enough power.
- Alternatively, we recommend using an external power source with the USB hub (if the USB hub supports such functionality).



Obsah je uzamčen

Dokončete, prosím, proces objednávky.

Následně budete mít přístup k celému dokumentu.



Proč je dokument uzamčen? Nahněvat Vás rozhodně nechceme. Jsou k tomu dva hlavní důvody:

- 1) Vytvořit a udržovat obsáhlou databázi návodů stojí nejen spoustu úsilí a času, ale i finanční prostředky. Dělali byste to Vy zadarmo? Ne*. Zakoupením této služby obdržíte úplný návod a podpoříte provoz a rozvoj našich stránek. Třeba se Vám to bude ještě někdy hodit.

**) Možná zpočátku ano. Ale vězte, že dotovat to dlouhodobě nelze. A rozhodně na tom nezbohatneme.*

- 2) Pak jsou tady „roboti“, kteří se přiživují na naší práci a „vysávají“ výsledky našeho úsilí pro svůj prospěch. Tímto krokem se jim to snažíme překazit.

A pokud nemáte zájem, respektujeme to. Urgujte svého prodejce. A když neuspějete, rádi Vás uvidíme!