

Soundcore Flare 2

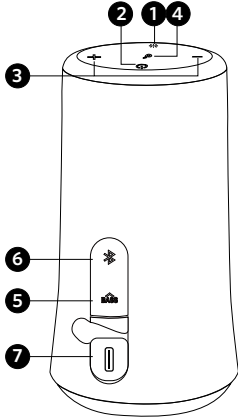
**USER MANUAL**

English	01	Português	79
Čeština	07	Русский	85
Dansk	13	Slovenský Jazyk	91
Deutsch	19	Slovenski Jezik	97
ελληνικά	25	Svenska	103
Español	31	Türkçe	109
Suomi	37	日本語	115
Français	43	한국어	121
Magyar	49	简体中文	127
Italiano	55	繁體中文	133
Nederlands	61	Portugues do Brasil	139
Norsk	67	العَرَبِيَّة	145
Język polski	73	תִּירָב	151

## Safety Instructions

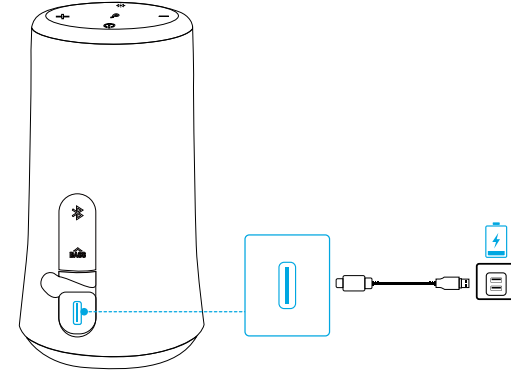
- Avoid dropping.
- Do not disassemble.
- Avoid extreme temperatures.
- Do not use the product outdoors during thunderstorms.
- Use original or certified cables.
- Do not use any corrosive cleaner/oil to clean.
- Do not expose batteries to heat sources such as direct sunlight, fire and or the like.

## At a Glance



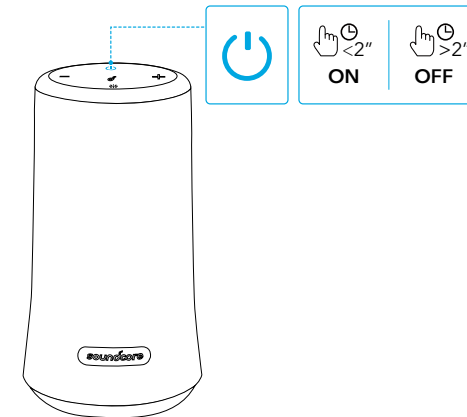
- |   |                        |   |                              |
|---|------------------------|---|------------------------------|
| 1 | Light effects button   | 5 | Bass Boost button            |
| 2 | Power button           | 6 | Bluetooth & PartyCast button |
| 3 | Volume buttons (- / +) | 7 | USB-C charging port          |
| 4 | Multi-function button  |   |                              |

## Charging



- Use the included USB cable to charge your speaker and make sure it is fully charged before first use.
- Do not charge your speaker for extended periods.
- When not in use, store your speaker in a cool place.

## Powering On/Off



Power on



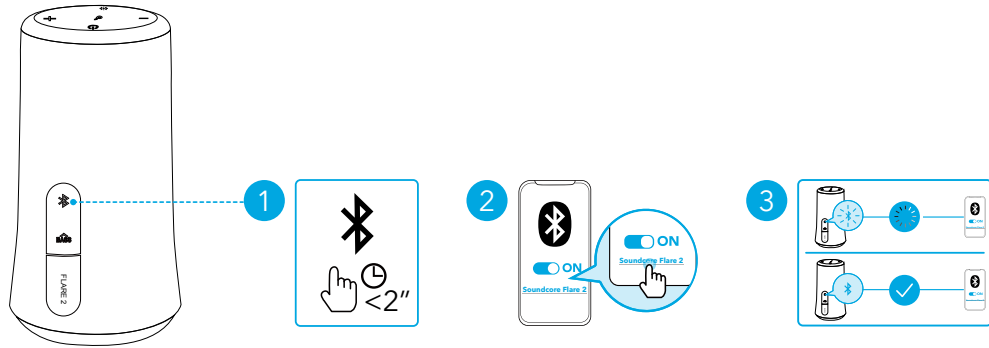
Press

Power off



Press and hold for 2 seconds

## Bluetooth Pairing



	Press	Enter Bluetooth pairing mode
	Flashing blue	Bluetooth pairing
	Steady blue	Bluetooth connected

- When powered on, the speaker will automatically connect to the last connected device if available within the Bluetooth range. If not, press the Bluetooth button to enter the Bluetooth pairing mode.
- To pair with another device, press the Bluetooth button to re-enter the pairing mode.

## PartyCast Mode

Set up one Flare 2 as the primary speaker and connect it with more than 100+ secondary Flare 2 speakers to control audio and all the light effects.

### Set up the primary speaker:

- Connect one Flare 2 speaker to your phone or other devices via Bluetooth. When successfully connected, the Bluetooth LED will turn blue.
- Press and hold the Bluetooth button on this Flare 2 for 3 seconds until you hear a sound and the Bluetooth LED flashes white to indicate this Flare 2 is the primary speaker.

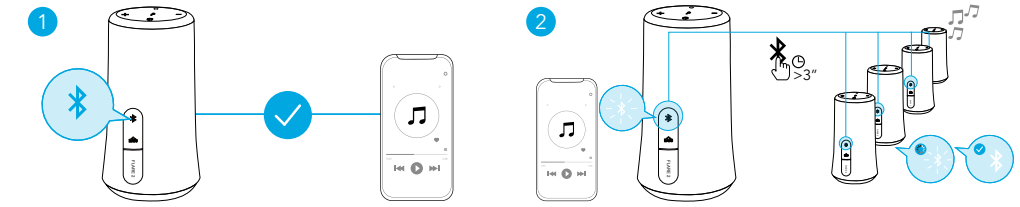
- The Bluetooth LED on the primary speaker will keep flashing white.

### Connect with secondary speakers:

- Make sure the secondary speakers aren't connected to any Bluetooth devices.

- Press the Bluetooth button to disconnect Flare 2 from a device, the Bluetooth LED will flash blue.

- Press the Bluetooth button for 3 seconds until you hear a sound and the Bluetooth LED flashes white to indicate the secondary speaker is in connection mode.
- When the secondary speakers are close to the primary speaker, they will connect to the primary speaker automatically. When successfully connected, the Bluetooth LED on the primary speaker will continue flashing white, while on the secondary speakers will turn white.



### When successfully enter the PartyCast mode:

- you can power off, adjust the volume, or switch light effects for all speakers by controlling the primary speaker only;
- you can power off or switch light effects for each secondary speaker individually;
- you can't adjust the volume for each secondary speaker individually;
- to exit the PartyCast mode, press the Bluetooth button either on the primary speaker or on the primary speaker for 3 seconds until the Bluetooth LED flashes blue.

## Button Controls

Play / Pause		Press
Next track		Press twice
Previous track		Press thrice
Bass Boost On / Off		Press

# Obsah je uzamčen

**Dokončete, prosím, proces objednávky.**

**Následně budete mít přístup k celému dokumentu.**



**Proč je dokument uzamčen? Nahněvat Vás rozhodně nechceme. Jsou k tomu dva hlavní důvody:**

- 1) Vytvořit a udržovat obsáhlou databázi návodů stojí nejen spoustu úsilí a času, ale i finanční prostředky. Dělali byste to Vy zadarmo? Ne\*. Zakoupením této služby obdržíte úplný návod a podpoříte provoz a rozvoj našich stránek. Třeba se Vám to bude ještě někdy hodit.

*\*) Možná zpočátku ano. Ale vězte, že dotovat to dlouhodobě nelze. A rozhodně na tom nezbohatneme.*

- 2) Pak jsou tady „roboti“, kteří se přiživují na naší práci a „vysávají“ výsledky našeho úsilí pro svůj prospěch. Tímto krokem se jim to snažíme překazit.

A pokud nemáte zájem, respektujeme to. Urgujte svého prodejce. A když neuspějete, rádi Vás uvidíme!