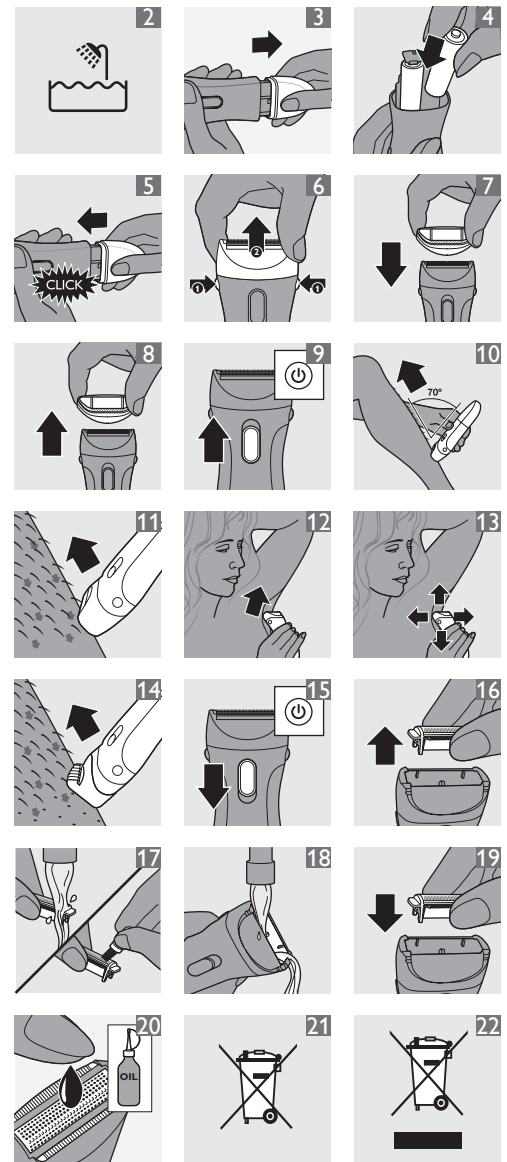
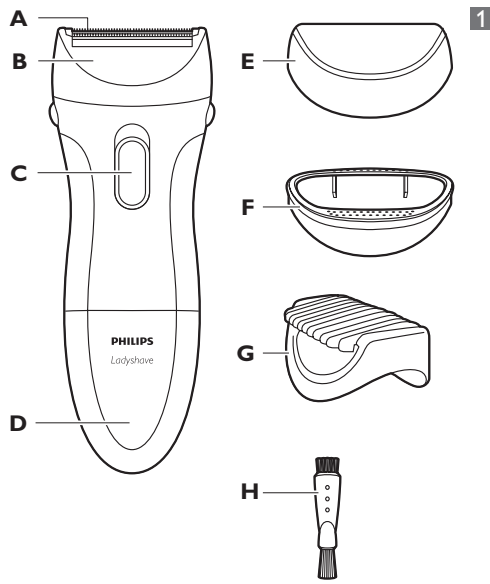


Register your product and get support at
www.philips.com/welcome

HP6342, HP6341



PHILIPS



Introduction

Congratulations on your purchase and welcome to Philips! To fully benefit from the support that Philips offers, register your product at www.philips.com/welcome.

With your new Philips Ladyshave you can quickly, easily and comfortably remove unwanted body hair. You can use the Ladyshave either dry or wet. If you shave while taking a bath or shower, we advise you to use soap or shaving foam for the most comfortable shave. After use, you can clean the Ladyshave under the tap or with the cleaning brush for extra hygiene.

General description (Fig. 1)

- A** Shaving unit with shaving foil and pre-trimmer
 - B** Shaving head
 - C** On/off slide
 - D** Battery compartment cover
 - E** Protection cap
 - F** Efficiency cap (HP6342 only)
 - G** 3mm trimming comb (HP6342 only)
 - H** Cleaning brush
- Not shown: Pouch (HP6342 only)

Important

Read this user manual carefully before you use the appliance and save it for future reference.

Warning

- This appliance is not intended for use by persons (including children) with reduced physical, sensory or mental capabilities, or lack of experience and knowledge, unless they have been given supervision or instruction concerning use of the appliance by a person responsible for their safety.
- Children should be supervised to ensure that they do not play with the appliance.

Caution

- Make sure your hands and the appliance are dry when you insert the batteries.
- Do not clean the Ladyshave with water above shower temperature (max. 35°C).
- Be careful with hot water. Always check if the water is not too hot, to prevent your hands from getting burnt.
- Use and store the appliance at a temperature between 15°C and 35°C.
- Do not use the appliance, the shaving unit, the efficiency cap (HP6342 only) or the trimming comb (HP6342 only) if it is damaged or broken, as this may cause injury.
- Never use any accessories or parts from other manufacturers or that Philips does not specifically recommend. If you use such accessories or parts, your guarantee becomes invalid.
- Do not expose the Ladyshave to direct sunlight.
- This appliance is only intended to be used by women to shave and trim their body hair. It is not intended for shaving or trimming scalp hair or for any other purpose.

General

- The appliance can be safely used in the bath or shower and cleaned under the tap (Fig. 2).
 - To keep the Ladyshave watertight:
- 1 Make sure that the rubber sealing ring of the battery holder stays clean and undamaged.
 - 2 Apply some vaseline to the rubber sealing ring from time to time.

Electromagnetic field (EMF)

- This Philips appliance complies with all standards regarding electromagnetic fields (EMF). If handled properly and according to the instructions in this user manual, the appliance is safe to use based on scientific evidence available today.

Preparing for use

The Ladyshave runs on two AA 1.5 volt alkaline batteries. We advise you to use Philips LR6 PowerLife batteries. They supply sufficient energy for approx. 40 minutes of shaving.

Note: Make sure that your hands are dry when you insert the batteries.

To avoid damage due to battery leakage:

- Do not expose the appliance to direct sunlight.
- Do not expose the appliance to temperatures higher than 35°C.
- Remove the batteries if you are not going to use the appliance for a month or more.
- Do not leave empty batteries in the appliance.

Inserting batteries

- 1 To remove the battery compartment cover, pull it off the appliance (Fig. 3).
- 2 Put the batteries in the battery holder (Fig. 4).

Note: Make sure that the + and - poles of the batteries point in the right direction.

- 3 Push the battery compartment cover back onto the appliance ('click') (Fig. 5).

Attaching/detaching the shaving head

- 1 To detach the shaving head, press the release buttons on both sides of the appliance (1) and pull the shaving head (2) (Fig. 6).
- 2 To attach the shaving head push it onto the appliance.

Note: Do not exert pressure on the shaving foil to avoid damage.

Attaching/detaching attachments

HP6342 comes with the protection cap, the efficiency cap and the trimming comb. HP6340 comes with the protection cap. All attachments can be attached and detached in the same way.

- 1 To attach a cap or comb, carefully push it onto the appliance. Make sure the recess of the comb is aligned with the front of the appliance (Fig. 7).
- 2 To detach a cap or comb, carefully pull it off the appliance (Fig. 8).

Note: Do not hold the comb by its teeth when you pull it.

Using the appliance

The Ladyshave is suitable for:

- Shaving the underarms
- Shaving the legs
- Shaving the bikini line
- Trimming the bikini line (HP6342 only)

Use on wet skin

You can use the Ladyshave on wet skin, while you have a bath or shower. To achieve the best result, lather your skin with soap or shaving cream beforehand.

Use on dry skin

If you prefer to use the Ladyshave dry, make sure that your skin is clean and completely dry.

Note: in principle, there is no difference in using the appliance on wet skin and using it on dry skin. You can simply choose which method you like best.

Note: Do not apply alcohol based-lotions to the skin directly before or after shaving. If you want, you can apply some talcum powder.

Note: Do not press the shaving head too hard onto the skin, as this has a negative effect on shaving performance and may cause some skin irritation.

Shaving

Legs and bikini line

- 1 Press the on/off slide upwards to switch on the appliance (Fig. 9).
- 2 Hold the appliance at an angle of approximately 70°. Make sure that the shaving foil and pre-trimmer are fully in contact with your skin (Fig. 10).
- 3 Stretch the skin with your free hand to make the hairs stand upright.
- 4 Move the appliance gently over the skin against the direction of hair growth (Fig. 11).

Underarms

- 1 When you shave the underarm area, place one arm behind your head to stretch the skin (Fig. 12).

- 2 Move the Ladyshave gently over the skin. To achieve the best result, move the Ladyshave up and down and from left to right (Fig. 13).

Efficiency cap (HP6342 only)

If you are new to shaving, you can use the efficiency cap to help you place the Ladyshave on the skin at the optimum angle. When the efficiency cap is placed flat on the skin, the shaving foil and trimmer are fully in contact with the skin. This helps to get perfect results.

Trimming (HP6342 only)

If the hair you want to shave is longer than 10mm, pre-trim the hair with the trimming comb to a length of 3mm for an optimal shaving performance.

- 1 Attach the trimming comb onto the appliance.
- 2 Press the on/off slide upwards to switch on the appliance (Fig. 9).
- 3 Move the appliance against the direction of hair growth. Make sure that the surface of the comb is in full contact with the skin at all times (Fig. 14).

Note: You will achieve the best result if you trim under dry conditions.

Cleaning and maintenance

Regular cleaning and proper maintenance ensure optimal results and guarantee a long life for the appliance. Clean the Ladyshave after each use.

Do not clean, rinse or immerse the Ladyshave in water if the cover of the battery holder is not closed properly.

Never use scouring pads, abrasive cleaning agents or aggressive liquids such as petrol or acetone to clean the appliance.

- 1 Switch off the appliance (Fig. 15).
- 2 Detach the shaving head from the appliance (see chapter 'preparing for use').
- 3 Remove the shaving unit from the shaving head (Fig. 16).

Note: Do not exert too much pressure on the shaving foil to avoid damage.

- 4 To clean the shaving head and shaving unit, rinse them under the tap or use the cleaning brush (Fig. 17).

Note: Do not clean the appliance with water above shower temperature.

- 5 Rinse the hairs off the appliance (Fig. 18).
- 6 Make sure the appliance is completely dry before you reattach the shaving unit (Fig. 19).

Maintenance

- 1 Lubricate the shaving foil with a drop of sewing machine oil twice a year (Fig. 20).
- 2 Apply some vaseline to the rubber sealing ring from time to time to keep the Ladyshave watertight.

Storage

- 1 Put the protection cap on the appliance.

Note: The protection cap prevents the shaving head from becoming damaged.

- 2 HP6342 only: Store the appliance and accessories in the pouch supplied.

Replacement

If you use the Ladyshave more than once a week, we advise you to replace the shaving unit after one or two years or when it is damaged.

The shaving unit, the cover of the battery compartment, the cleaning brush, the caps and the comb can be replaced. If you need to replace one or more parts, go to your Philips dealer or an authorised Philips service centre.

Environment

- Non-rechargeable batteries contain substances that may pollute the environment. Do not throw away non-rechargeable batteries with the normal household waste, but dispose of them at an official collection point for batteries. Always remove the non-rechargeable batteries before you discard

and hand in the appliance at an official collection point (Fig. 21).

- Do not throw away the appliance with the normal household waste at the end of its life, but hand it in at an official collection point for recycling. By doing this, you help to preserve the environment (Fig. 22).

Guarantee and service

If you need service or information or if you have a problem, please visit the Philips website at www.philips.com or contact the Philips Consumer Care Centre in your country (you find its phone number in the worldwide guarantee leaflet). If there is no Consumer Care Centre in your country, go to your local Philips dealer.

Troubleshooting

This chapter summarises the most common problems you could encounter with the appliance. If you are unable to solve the problem with the information below, contact the Consumer Care Centre in your country.

Problem	Cause	Solution
---------	-------	----------

The appliance is not performing as well as it should.	The shaving unit is dirty.	Remove the shaving unit and clean it under the tap or with the cleaning brush. Remove any hairs that might be stuck under the trimmer.
---	----------------------------	--

	You put the appliance on the skin at a wrong angle.	Make sure that you put the appliance on the skin at an angle of 70° (see chapter 'Using the appliance', section 'Shaving').
--	---	---

The appliance runs too slowly (and produces an odd sound).	The batteries are nearly empty.	Replace the batteries.
--	---------------------------------	------------------------

	The shaving unit is dirty.	Clean the shaving unit.
--	----------------------------	-------------------------

	The shaving unit needs to be lubricated.	Lubricate the shaving unit with a few drops of sewing machine oil.
--	--	--

More skin irritation than usual.	The shaving foil is damaged or worn.	Replace the shaving unit.
----------------------------------	--------------------------------------	---------------------------

The appliance does not work.	The batteries are empty.	Replace the batteries.
------------------------------	--------------------------	------------------------

	You have not placed the batteries in the battery compartment correctly.	Put the batteries in the compartment in accordance with the + and - indications in the compartment.
--	---	---

	You have not attached the battery compartment cover properly.	Push the battery compartment cover onto the appliance ('click').
--	---	--

Problem	Cause	Solution
The appliance fell into the water while the battery compartment was open.		Let the appliance dry. Do not reattach the battery compartment cover until the inside of the appliance is completely dry.

Obsah je uzamčen

Dokončete, prosím, proces objednávky.

Následně budete mít přístup k celému dokumentu.



Proč je dokument uzamčen? Nahněvat Vás rozhodně nechceme. Jsou k tomu dva hlavní důvody:

- 1) Vytvořit a udržovat obsáhlou databázi návodů stojí nejen spoustu úsilí a času, ale i finanční prostředky. Dělali byste to Vy zadarmo? Ne*. Zakoupením této služby obdržíte úplný návod a podpoříte provoz a rozvoj našich stránek. Třeba se Vám to bude ještě někdy hodit.

**) Možná zpočátku ano. Ale vězte, že dotovat to dlouhodobě nelze. A rozhodně na tom nezbohatneme.*

- 2) Pak jsou tady „roboti“, kteří se přiživují na naší práci a „vysávají“ výsledky našeho úsilí pro svůj prospěch. Tímto krokem se jim to snažíme překazit.

A pokud nemáte zájem, respektujeme to. Urgujte svého prodejce. A když neuspějete, rádi Vás uvidíme!