



**We love that you are rocking JLab Audio!
We take pride in our products and fully stand behind them.**

JLAB AUDIO
|
JBUDS AIR
|
EARBUDS



YOUR SATISFACTION IS GUARANTEED

You may exchange or return merchandise within 30 days of the purchase date. Please return the item to the location you purchased it. If your item has been opened or used, restrictions may apply.



YOUR WARRANTY

You may register your product at jlabaudio.com/register. All warranty claims are subject to JLab Audio authorization and at our sole discretion. Retain your proof of purchase to ensure warranty coverage.



CONTACT US

Reach out to us at support@jlabaudio.com or visit jlabaudio.com/contact.

FIRST TIME SETUP: BLUETOOTH PAIRING

- 1 AUTO-CONNECTING EARBUDS**
Press and hold 3+ seconds on both buttons. **White lights will flash** to indicate earbuds are automatically pairing to each other.



- 2 CONNECTING TO BLUETOOTH**
Once earbuds pair, the **right earbud will flash blue and white** indicating the earbuds are ready to pair to your Bluetooth device. **Left earbud will be solid white.**



- 3 CONNECTING TO BLUETOOTH**
Select "JLab JBuds Air" in your device settings. Voice prompt "Bluetooth connected" followed by **solid white lights** will indicate you are connected. You will now be ready to use your JBuds Air.



PAIRING NEW / ADDITIONAL BLUETOOTH DEVICES:

When earbuds are powered off, press and hold Right Earbud button 10+ seconds. The earbud will **flash blue and white** indicating it is ready to pair to your Bluetooth device. Once connected, turn on Left Earbud to auto connect both earbuds.

ACCESSORIES



3 GEL TIP SIZES



2 CUSH FINSTM

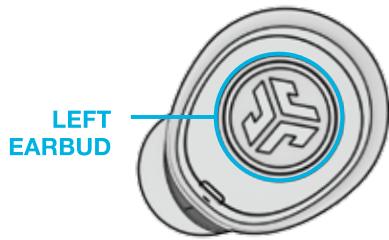


USB CABLE



CHARGING CASE

BUTTON FUNCTIONS



LEFT EARBUD

TURN ON / OFF:

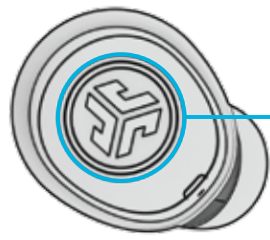
Press & hold 5+ seconds.

VOLUME DOWN: 1 click.

PLAY / PAUSE: 2 clicks.

TRACK BACK:

Press & hold 1+ second.



RIGHT EARBUD

TURN ON / OFF:

Press & hold 5+ seconds.

VOLUME UP: 1 click.

ANSWER: 1 click. **HANGUP:** 2 clicks.

REJECT INCOMING CALLS:

Press & hold 1+ second.

SIRI (iOS) or "OK GOOGLE" (ANDROID):

2 clicks.

TRACK FORWARD:

Press & hold 1+ seconds.

VOICE PROMPTS

"Hello": Power ON

"Earbuds joined":

Earbuds paired to each other

"Ready to Pair": JBuds Air are ready to pair to Bluetooth device

"Bluetooth Connected":

Earbud is connected to device

"Battery Full": 100-75%

"Battery Medium": 75-25%

"Low Battery": Less than 25%

When power decreases to 10%, "Low Battery" will play

"Goodbye": Power OFF

EQUALIZER MODES

Click either the right or left earbud 3 times for different EQ settings (JBuds Air will cycle 3 EQ settings).



JLab SIGNATURE

JLab C3™ signature sound with amplified bass and vocals



BALANCED

Even sound with no additional enhancements



BASS BOOST

Amplified bass and sub-bass

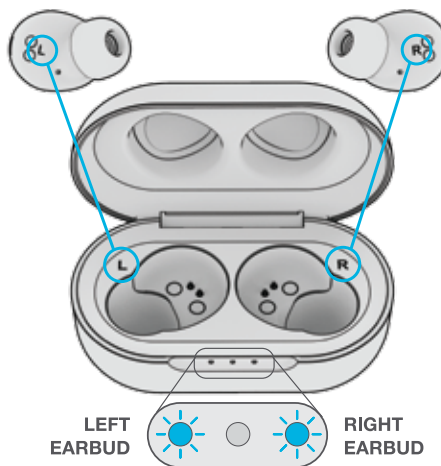
CHARGING EARBUDS

The left and right earbud need to match the corresponding L and R letters on the charging case for proper charging and connection.

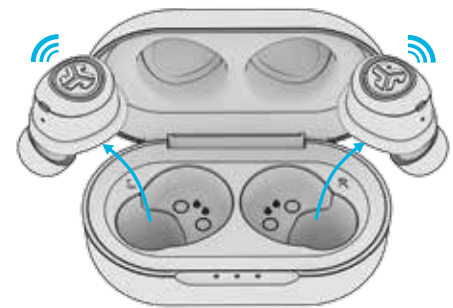
Placing the earbuds in the case will auto power off the earbuds and start charging.

Solid blue lights on the earbuds will indicate charging and will **turn off** after earbuds are fully charged.

Case will show **blinking blue lights** while charging.



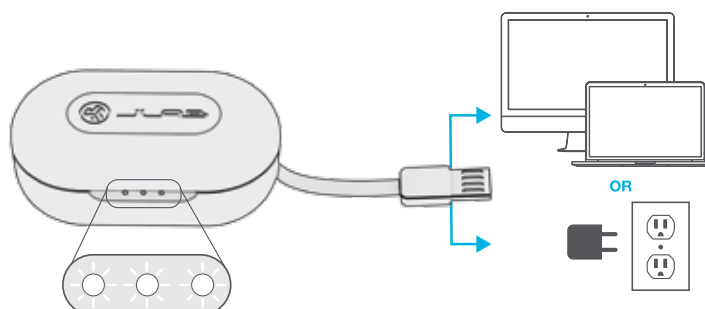
Removing the earbuds from the case will turn on and auto connect to your device for next use.



CHARGING CASE

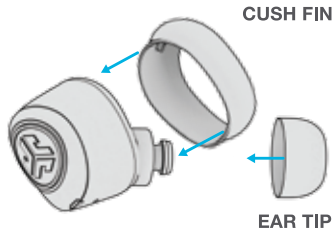
Connect the JBuds Air to computer or USB 5V output device.

LEDs pulse white when charging and **turn solid white** when fully charged.



FITTING

Try the optional Cush Fins and all ear tips for best fit and proper seal.



1 Hold the earbud vertical to the ear.



2 Twist in the ear canal to lock in.



TROUBLESHOOTING

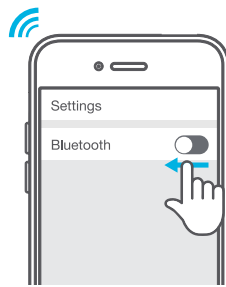
CAN YOU HEAR MUSIC FROM THE RIGHT EARBUD BUT NOT THE LEFT?

CONNECT/RECONNECT THE LEFT AND RIGHT EARBUDS

If the right earbud is working but no sound is coming out of the left, follow these steps to pair the two earbuds together.

1 Turn Bluetooth off on your device.

Turn both earbuds off (by pressing and holding each earbud button until voice prompt says 'good bye' or you see no lights).



2 When earbuds are off, **press and hold 15+ seconds on the RIGHT earbud button.**

While holding, earbud will **flash blue and white.**

Release when earbud **flashes white.**



3 Repeat process with LEFT earbud: **Press and hold 15+ seconds on earbud button.**

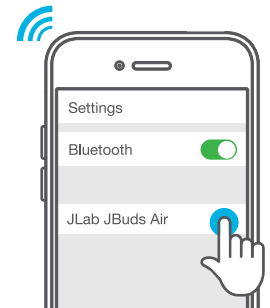
Release when earbud is **solid white.** Once earbuds connect, the right earbud will **flash blue and white** indicating it is ready to connect to Bluetooth.

Left earbud will be **solid white.**



4 Turn your device Bluetooth back on.

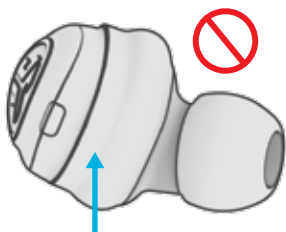
Select "JLab JBuds Air" to connect.



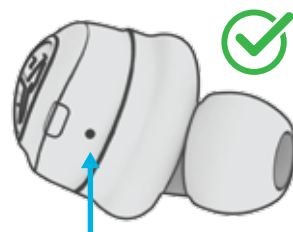
Note: To avoid having to reconnect the earbuds again, make sure you return the earbuds to the correct spot in the case. See *Charging Earbuds*.

ECHOES ON CALLS

If you experience microphone echo/call quality with the JBuds Air, make sure the Cush Fin is not blocking the microphone port.



Microphone covered



Microphone open

Obsah je uzamčen

Dokončete, prosím, proces objednávky.

Následně budete mít přístup k celému dokumentu.



Proč je dokument uzamčen? Nahněvat Vás rozhodně nechceme. Jsou k tomu dva hlavní důvody:

- 1) Vytvořit a udržovat obsáhlou databázi návodů stojí nejen spoustu úsilí a času, ale i finanční prostředky. Dělali byste to Vy zadarmo? Ne*. Zakoupením této služby obdržíte úplný návod a podpoříte provoz a rozvoj našich stránek. Třeba se Vám to bude ještě někdy hodit.

**) Možná zpočátku ano. Ale vězte, že dotovat to dlouhodobě nelze. A rozhodně na tom nezbohatneme.*

- 2) Pak jsou tady „roboti“, kteří se přiživují na naší práci a „vysávají“ výsledky našeho úsilí pro svůj prospěch. Tímto krokem se jim to snažíme překazit.

A pokud nemáte zájem, respektujeme to. Urgujte svého prodejce. A když neuspějete, rádi Vás uvidíme!