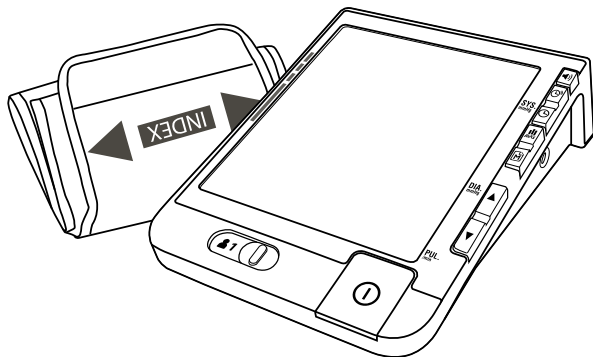




truelife | Pulse BT



- EN INSTRUCTIONS FOR USE
- DE BEDIENUNGSANLEITUNG
- CZ NÁVOD K POUŽITÍ
- SK NÁVOD NA POUŽÍVANIE
- PL INSTRUKCJA UŻYCIA
- HU HASZNÁLATI ÚTMUTATÓ
- SL NAVODILA ZA UPORABO
- HR NAPUTAK ZA UPORABU

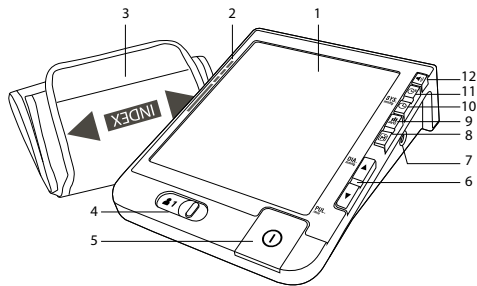
EN – INSTRUCTIONS FOR USE

BOX CONTENTS

- | | |
|---------------------------|-----------------------------|
| 1× Blood pressure monitor | 4× 1.5V AA alkaline battery |
| 1× Arm cuff | 1× Manual |
| 1× Storage case | 1× Safety Instructions |

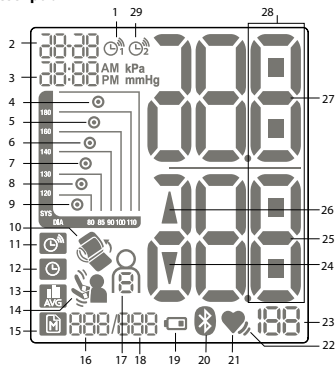
The pressure monitor measures blood pressure (systolic and diastolic) using the oscillometric method and also heart rate.

1. PRODUCT DESCRIPTION



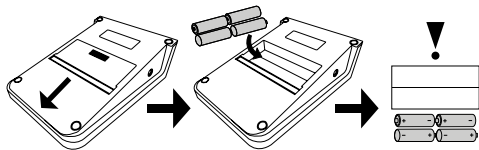
- | | |
|------------------------|---------------------|
| 1. Display | 7. AC adapter input |
| 2. Inlet for cuff hose | 8. Memory |
| 3. Arm cuff | 9. Average value |
| 4. Change user | 10. Time settings |
| 5. Power | 11. Alarm |
| 6. Up/down | 12. Volume |

Display description



- | | |
|-------------------------------|--------------------------------------|
| 1. Alarm 1 | 16. Current entry in memory |
| 2. Date | 17. User |
| 3. Time | 18. Total memory |
| 4. Severe hypertension | 19. Low battery indicator |
| 5. Moderate hypertension | 20. Bluetooth |
| 6. Mild hypertension | 21. Heart rate symbol |
| 7. Elevated normal pressure | 22. Irregular heartbeat indicator |
| 8. Normal pressure | 23. Heart rate |
| 9. Optimal pressure | 24. Air discharge indicator |
| 10. Improperly fitted cuff | 25. Diastolic (lower) blood pressure |
| 11. Alarm settings | 26. Pressure indicator |
| 12. Date and time settings | 27. Systolic (upper) blood pressure |
| 13. Average value mode | 28. Volume level |
| 14. Motion during measurement | 29. Alarm 2 |
| 15. Memory | |

2. BATTERY INSTALLATION



Remove the battery cover on the back of the monitor unit and insert 4x 1.5V AA batteries. Make sure that the batteries are inserted according to the polarity indicated in the battery compartment. Do not use batteries that are past their expiration date.

The battery must be replaced when the battery symbol and „E6“ appear on the display after switching on the monitor. The symbol together with the code indicate a low battery level. With a critically low battery level, the device will not take readings. This device is not suitable for rechargeable batteries.

If you will not be using the device for a long period of time, remove the batteries.

3. USING THE AC ADAPTER

(The AC adapter is not included. It can be purchased as an optional accessory.)

a) Connecting

1. Insert the adapter connector into the DC jack on the right side of the monitor unit.
2. Plug the adapter into a 100–240 V socket.
3. The monitor will turn on.

b) Disconnecting

1. Unplug the adapter.
2. Pull the adapter connector out of the DC jack on the side of the monitor.

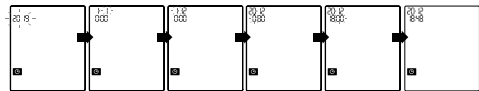
Note: Only use the original adapter.

Note: When using the adapter, you can leave the batteries inside the device.

4. SETTING THE DATE AND TIME

The unit automatically enters the date and time settings menu after the batteries are inserted or the power adapter is plugged in. This can manually be accessed by holding the time settings button for 5 seconds.

1. „Year“ flashes on the display.
2. Use the up/down and arrows to set the correct year and confirm with the power button.
3. Continue in the same way to set the month > day > hour > minute.



IMPORTANT: The first time you set up the device, you must set the exact date and time. If it is not set correctly, the values will not be correctly copied to the calendar when the readings are transferred to a mobile device.

Note: The readings are stored in the memory when the batteries are replaced. However, you will need to set the date and time again.

5. ADJUSTING THE VOLUME

The blood pressure monitor uses audible alerts for some functions. The volume of these alerts can be adjusted.

1. Press the volume button to enter volume settings.
2. The volume icon will start flashing.
3. Use the up arrow to increase the volume and the down arrow to decrease it.
4. After setting the desired volume, press the power button to confirm and exit the mode.

6. SETTING AN ALARM

You can set two audible alerts on the monitor – alarms.

1. Press the alar button to enter the alarm settings.
2. The alarm icon will flash on the display. Press the alarm button again and choose between two alarms (or .
3. When the icon you have selected flashes, you can use the up and down buttons to toggle between turning the alarm on ON and off OFF . Press and hold the alarm button until the alarm icon stops flashing.

Obsah je uzamčen

Dokončete, prosím, proces objednávky.

Následně budete mít přístup k celému dokumentu.



Proč je dokument uzamčen? Nahněvat Vás rozhodně nechceme. Jsou k tomu dva hlavní důvody:

- 1) Vytvořit a udržovat obsáhlou databázi návodů stojí nejen spoustu úsilí a času, ale i finanční prostředky. Dělali byste to Vy zadarmo? Ne*. Zakoupením této služby obdržíte úplný návod a podpoříte provoz a rozvoj našich stránek. Třeba se Vám to bude ještě někdy hodit.

**) Možná zpočátku ano. Ale vězte, že dotovat to dlouhodobě nelze. A rozhodně na tom nezbohatneme.*

- 2) Pak jsou tady „roboti“, kteří se přiživují na naší práci a „vysávají“ výsledky našeho úsilí pro svůj prospěch. Tímto krokem se jim to snažíme překazit.

A pokud nemáte zájem, respektujeme to. Urgujte svého prodejce. A když neuspějete, rádi Vás uvidíme!