

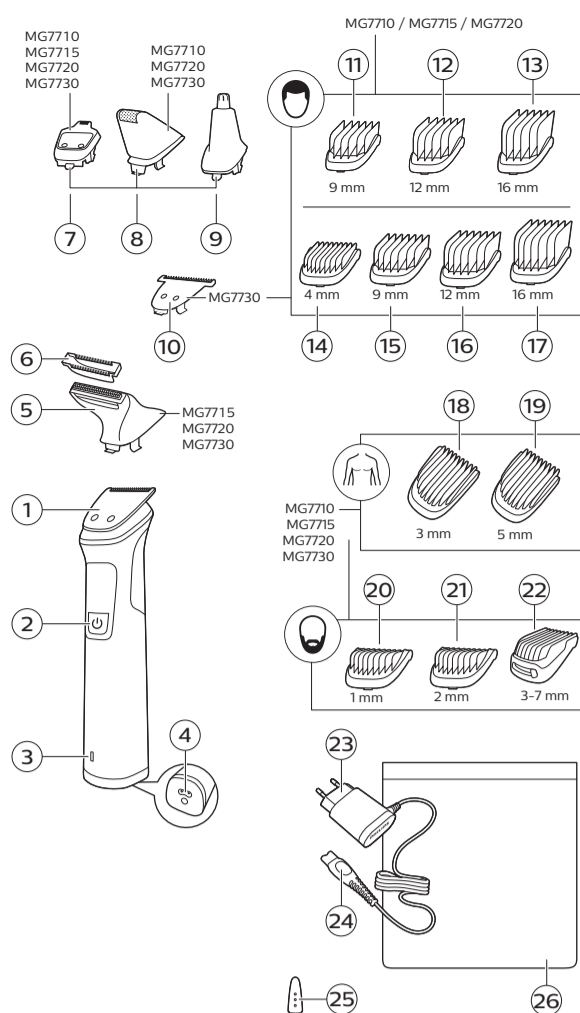
PHILIPS

MG7730
MG7720
MG7715
MG7710



 >75% recycled paper
>75% papier recyclé

© 2018 Koninklijke Philips N.V.
All rights reserved
8888.989.2534.1 (22/2/2018)



English

Introduction

Congratulations on your purchase and welcome to Philips! To fully benefit from the support that Philips offers, register your product at www.philips.com/welcome.

General description (Fig. 1)

- 1 Full-size hair trimmer
- 2 On/off button
- 3 Battery status indicator
- 4 Socket for small plug
- 5 Body shaver (MG7730, MG7720, MG7715 only)
- 6 Skin protector (MG7730, MG7720, MG7715 only)
- 7 Precision trimmer (MG7730, MG7720, MG7715, MG7710 only)
- 8 Precision shaver (MG7730, MG7720, MG7710 only)
- 9 Nose trimmer
- 10 Extra-wide hair trimmer (MG7730 only)
- 11 Hair comb regular 3/8in. (9mm) (MG7720, MG7715, MG7710 only)
- 12 Hair comb regular 15/32in. (12mm) (MG7720, MG7715, MG7710 only)
- 13 Hair comb regular 21/32in. (16mm) (MG7720, MG7715, MG7710 only)
- 14 Hair comb wide 5/32in. (4mm) (MG7730 only)
- 15 Hair comb wide 3/8in. (9mm) (MG7730 only)
- 16 Hair comb wide 15/32in. (12mm) (MG7730 only)
- 17 Hair comb wide 21/32in. (16mm) (MG7730 only)
- 18 Body comb 1/8in. (3mm)
- 19 Body comb 3/16in. (5mm)
- 20 Stubble comb 3/64in. (1mm)
- 21 Stubble comb 5/64in. (2mm)
- 22 Adjustable comb (3-7mm)
- 23 Supply unit
- 24 Small plug
- 25 Cleaning brush
- 26 Pouch

Note: The accessories supplied may vary for different products. The box shows the accessories that have been supplied with your appliance.

Important safety information

Read this important information carefully before you use the appliance and its accessories and save it for future reference. The accessories supplied may vary for different products.

Danger



- Keep the supply unit dry.

Warning

- To charge the battery, only use the detachable supply unit (HQ8505) provided with the appliance.
- The supply unit contains a transformer. Do not cut off the supply unit to replace it with another plug, as this causes a hazardous situation.
- This appliance can be used by children aged from 8 years and above and persons with reduced physical, sensory or mental capabilities or lack of experience and knowledge if they have been given supervision or instruction concerning use of the appliance in a safe way and understand the hazards involved. Children shall not play with the appliance. Cleaning and user maintenance shall not be made by children without supervision.
- Always unplug the appliance before you clean it under the tap.
- Always check the appliance before you use it. Do not use the appliance if it is damaged, as this may cause injury. Always replace a damaged part with one of the original type.
- Do not open the appliance to replace the rechargeable battery.

Caution



- Never immerse the charging stand in water and do not rinse it under the tap.
- Do not use the supply unit in or near wall sockets that contain an electric air freshener to prevent irreparable damage to the supply unit.
- Only use this appliance for its intended purpose as shown in the user manual.
- For hygienic reasons, the appliance should only be used by one person.
- Never use water hotter than 60°C to rinse the appliance.
- Never use compressed air, scouring pads, abrasive cleaning agents or aggressive liquids such as petrol or acetone to clean the appliance.

Electromagnetic fields (EMF)

This Philips appliance complies with all applicable standards and regulations regarding exposure to electromagnetic fields.

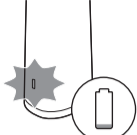
General



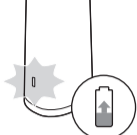
- This appliance is waterproof. It is suitable for use in the bath or shower and for cleaning under the tap. For safety reasons, the appliance can therefore only be used without cord.
- The supply unit is suitable for mains voltages ranging from 100 to 240 volts.
- The supply unit transforms 100-240 volts to a safe low voltage of less than 24 volts.
- Maximum noise level: Lc = 75 dB(A).

Charging

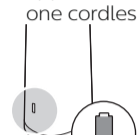
Battery status indications



- When the battery is almost empty, the battery status indicator flashes orange.



- When the appliance is charging, the battery status indicator flashes white slowly.
- During quick charge, the battery status indicator flashes white. After approx. 5 minutes of charging, the appliance contains enough power for one cordless trimming session.



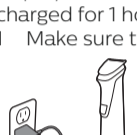
- When the battery is fully charged, the battery status indicator lights up white continuously.

Note: After approx. 30 minutes, the light goes out automatically.

Charging

Charge the appliance before you use it for the first time and when the display indicates that the battery is almost empty. When the appliance has charged for 1 hour, it has a cordless operating time of up to 2 hours.

- 1 Make sure the appliance is switched off.



- 2 Insert the small plug into the appliance and put the supply unit in the wall socket.
- 3 After charging, remove the supply unit from the wall outlet and pull the small plug out of the appliance.

Quick charge

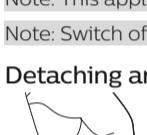
After approx. 5 minutes charging, the appliance contains enough power for one cordless trimming session.

Using the appliance

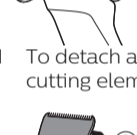
Note: This appliance can only be used without cord.

Note: Switch off and clean the appliance after each use.

Detaching and attaching cutting elements

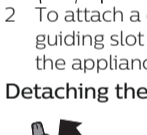


- 1 To detach a cutting element, push upwards against the teeth of the cutting element and take it off the handle.



- 2 To attach a cutting element, insert the lug of the cutting element into the guiding slot at the front and push the back of the cutting element onto the appliance ('click').

Detaching the precision shaver and nose trimmer

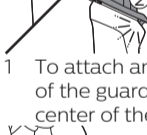


- 1 Place your finger on the arrow at the back of the attachment and push it off the handle in the direction of the arrow.

Attaching and detaching combs



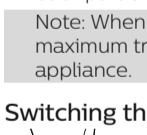
- 1 To attach any type of guard onto a cutting element, slide the front part of the guard onto the teeth of the cutting element. Then push down the center of the guard with your fingers or the palm of your hand ('click').



- 2 To detach any type of comb from the cutting element, carefully pull its back part off the appliance and then slide it off the cutting element.

Note: When trimming for the first time, start by using the comb with the maximum trimming length setting to familiarize yourself with the appliance.

Switching the appliance on and off

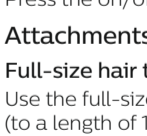


Press the on/off button once to turn the appliance on or off.

Attachments for use on beard

Full-size hair trimmer

Use the full-size hair trimmer without a comb to trim hair close to the skin (to a length of 1/32in (0.5mm) or to create clean lines around your beard, neck and sideburns.



- 1 To trim hair close to the skin, place the flat side of the cutting element against your skin and make strokes against the direction of hair growth.



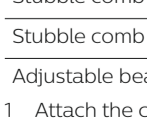
- 2 For contouring, hold the cutting element perpendicular to the skin and move it upwards or downwards with gentle pressure.

Beard combs

Attach a beard comb to the full-size hair trimmer to trim your beard and moustache evenly. The appliance comes with 5 beard combs. The hair length settings are indicated on the combs. The settings correspond to the remaining hair length after trimming.

Comb	inch	mm
Stubble comb	3/64in.	1mm
Stubble comb	5/64in.	2mm
Adjustable beard comb	1/8in.- 9/32in.	3mm-7mm

- 1 Attach the comb to the full-size hair trimmer.



Obsah je uzamčen

Dokončete, prosím, proces objednávky.

Následně budete mít přístup k celému dokumentu.



Proč je dokument uzamčen? Nahněvat Vás rozhodně nechceme. Jsou k tomu dva hlavní důvody:

- 1) Vytvořit a udržovat obsáhlou databázi návodů stojí nejen spoustu úsilí a času, ale i finanční prostředky. Dělali byste to Vy zadarmo? Ne*. Zakoupením této služby obdržíte úplný návod a podpoříte provoz a rozvoj našich stránek. Třeba se Vám to bude ještě někdy hodit.

**) Možná zpočátku ano. Ale vězte, že dotovat to dlouhodobě nelze. A rozhodně na tom nezbohatneme.*

- 2) Pak jsou tady „roboti“, kteří se přiživují na naší práci a „vysávají“ výsledky našeho úsilí pro svůj prospěch. Tímto krokem se jim to snažíme překazit.

A pokud nemáte zájem, respektujeme to. Urgujte svého prodejce. A když neuspějete, rádi Vás uvidíme!