

BS246GB TWS Bluetooth Headset User Manual

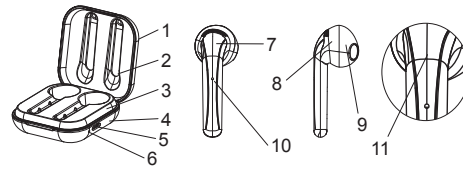
Bluetooth headset should be used with the compatible devices which support Bluetooth wireless technology. This allows you to make two calls and enjoy the music streaming at any time freely. Please read this user manual carefully before using the headset, and also read your device's user manual regarding the Bluetooth function, and pay attention to those important safety and maintenance information. Please keep the headset away from children.

Specifications

Bluetooth Version :	V5.0
Bluetooth Profiles Supported :	HFP, HSP, A2DP, AVRCP
Audio Decoding Protocol :	SBC, AAC
Transmission Power :	Class 2
Operation Range :	Up to 10 meters
Frequency Range :	2.4GHz-2.48GHz
Battery of Headset :	30mAH Li-polymer Battery
Charging Voltage of Headset :	DC 5V±0.2V
Charging Time of Headset :	About 1.5 hours
Battery of Base :	300mAH Li-polymer Battery
Charging Voltage of Base :	DC 4.75V-6V
Charging Time of Base :	About 1.5 hours
Charging Headset Times from	
Charging Base :	About 2-3 times
Music Playing Time :	(1KHz 88dB) ≥ 3.5 hours
Talk Time :	(1KHz 88dB) ≥ 4 hours
Standby Time :	≥ 100 hours
Driver :	φ10mm
Driver sensitivity :	103±3dB (1KHz)
Driver impedance :	16Ω±15%
Driver frequency ring range :	20Hz-20KHz
Dimensions of Charging	
Base(mm) :	L51.5×W51.5×H21.1
Dimensions of Headset(mm) :	L43.1×W16.6×H17.2
Weight(one headset) :	About 3.4 g
Total Weight :	About 35.2 g

*The time mentioned above may vary due to user's operation mode and device settings.

Structure Sketch

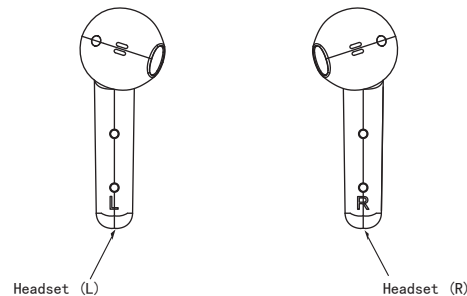


- | | |
|--|----------------------------------|
| 1) Charging Base-Flip Cover | 6) Charging Base-Indicator |
| 2) Charging Base-Inner Cavity | 7) Headset-Up Shell |
| 3) Charging Base-Up Shell | 8) Headset-Bottom Shell |
| 4) Charging Base-Bottom Shell | 9) Driver Shell |
| 5) Charging Base-Micro-USB Charging Port | 10) Headset-Indicator & Mic Hole |
| | 11) Touch Bar |

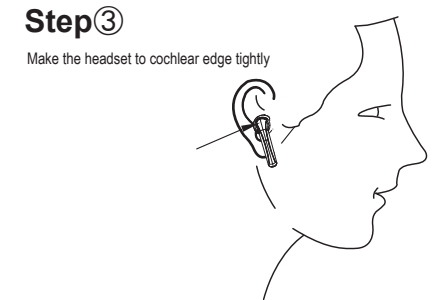
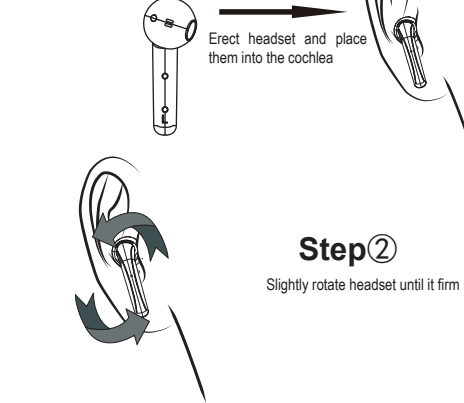
Headset Mode

Status No.	Status	Charging Base Performance
1	DUT Pairing Mode	The indicator light keeps on white.
2	TWS Pairing Mode	After TWS pairing successfully, L headset prompts "connected". 1st TWS pairing or pairing after deleted pairing records, indicator light flashes white quickly, when pairing successfully, the indicator light flashes white slowly(The indicator light also will flash white slowly if TWS didn't pair successfully after 15 seconds).
3	Standby Mode	/
4	Call Mode	/
5	Headset Charging Mode	The indicator light of the headset is white when being charged, and will turn off automatically after being fully charged
6	Power On State	The headset prompts "Power on", and the indicator light flashes white for three times.
7	Power Off State	The headset prompts "Power off", and the indicator light flashes white for three times(The indicator light will turn white directly if putting headsets back to charging base to power off).
8	Low Voltage Alarm State	The headset prompts "Didi" once every 120 seconds.

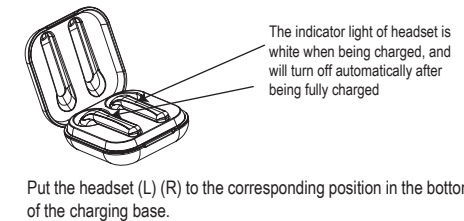
Identify according to L&R and wear the headset (R) and headset (L) respectively



Wearing Steps:

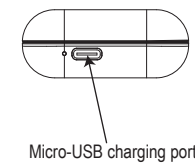


Charging Ways of Headset

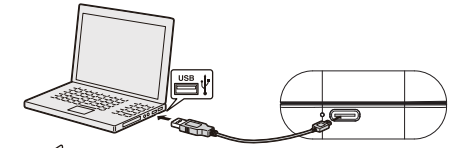


Charging Ways of Charging Base

- When charging base being charged by Micro-USB, the indicator light flashes red once every 2 seconds means 1%-25% battery, twice means 25%-50%, 3 times means 50%-75% and 4 times means 75%-100%. When full charged, the indicator light keeps on red.
- When charging base to charge headset, the indicator light flashes red once every 2 seconds means 1%-25% battery, twice means 25%-50%, 3 times means 50%-75% and 4 times means 75%-100%.
- When charging base without charging, the indicator light is off.



Use the Micro-USB cable to connect with computer

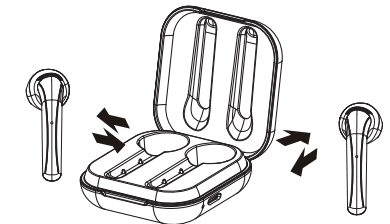


- Note 1: Check the charging device is suitable for the headset or not.
 Note 2: Use only the supplied charger to charge the headset, if use other device may violate the validation or the maintenance article of this product and may cause danger.
 Note 3: Do not attempt to force open the built-in battery as this could damage the headset.
 Note 4: A fully charged headset will lose its power automatically if left unused. It is recommended to charge the headset every three months.
 Note 5: Do not leave the headset in a too hot or too cold condition (best between -10 C and 50 C) which may affect the headset's operations although it is fully charged.
 Note 6: Do not dispose of the headset into fire or water.

Turning ON/OFF

1 Method

Pick up the headsets from the charging base to turn on automatically. Put them back to power off and charge the headset.



2 Method

In OFF MODE, press and hold touch bar of headset(R) or headset(L) for 2 seconds to turn on.
 In ON MODE, press and hold touch bar of headset(R) or headset(L) for 5 seconds to turn off.



Obsah je uzamčen

Dokončete, prosím, proces objednávky.

Následně budete mít přístup k celému dokumentu.



Proč je dokument uzamčen? Nahněvat Vás rozhodně nechceme. Jsou k tomu dva hlavní důvody:

- 1) Vytvořit a udržovat obsáhlou databázi návodů stojí nejen spoustu úsilí a času, ale i finanční prostředky. Dělali byste to Vy zadarmo? Ne*. Zakoupením této služby obdržíte úplný návod a podpoříte provoz a rozvoj našich stránek. Třeba se Vám to bude ještě někdy hodit.

**) Možná zpočátku ano. Ale vězte, že dotovat to dlouhodobě nelze. A rozhodně na tom nezbohatneme.*

- 2) Pak jsou tady „roboti“, kteří se přiživují na naší práci a „vysávají“ výsledky našeho úsilí pro svůj prospěch. Tímto krokem se jim to snažíme překazit.

A pokud nemáte zájem, respektujeme to. Urgujte svého prodejce. A když neuspějete, rádi Vás uvidíme!