

Exclusive remote control RC802V


Quick start guide

Remote control functions

: Standby/quit standby.

: To display the Settings menu.

: To access the Android TV homepage.


: To display the Option menu.


OK: To confirm an entry or selection. This button is also used to display the channel list in TV mode.

: Navigation direction buttons.

: To return to the previous menu or quit an App.

: To select input source.

: To turn on the Google Assistant function. *(Available only when the network connection is normal.)*


: To pop up the virtual remote control keyboard when available.

 **+/-**: To control the volume.

P +/-: To change channels.

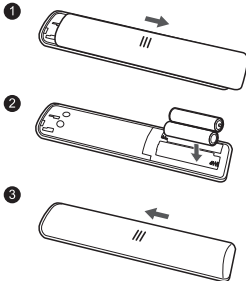
NETFLIX: To access the NETFLIX application if available.

: To access T recommended Apps.

Note: Follow the on-screen guide to pair the remote control with the TV when pressing the  button for the first time.

Installing batteries

1. Push to open the back cover as illustrated.
2. Insert two AAA batteries according to the polarities marked on the battery case.
3. Replace the back cover as illustrated.



Warning

Batteries (battery pack or batteries installed) shall not be exposed to excessive heat such as sunshine, fire or the like.

Information for users on disposal of old equipment and batteries**[European union]**

These symbols indicate that the electrical and electronic equipment and the battery with this symbol should not be disposed of as general household waste at its end-of-life. Instead, the products should be handed over to the applicable collection points for the recycling of electrical and electronic equipment as well as batteries for proper treatment, recovery and recycling in accordance with your national legislation and the Directive 2012/19/EU, 2006/66/EC and 2008/12/EC.



Products



Pb Battery

Notice:

The sign Pb below the symbol for batteries indicates that this battery contains lead.

By disposing of these products correctly, you will help to conserve natural resources and will help to prevent potential negative effects on the environment and human health which could otherwise be caused by inappropriate waste handling of these products. For more information about collection points and recycling of these products, please contact your local municipal office, your household waste disposal service or the shop where you purchased the product.

Penalties may be applicable for incorrect disposal of this waste, in accordance with national legislation.

[Business users]

If you wish to dispose of this product, please contact your supplier and check the terms and conditions of the purchase contract.

[Other countries outside the european union]

These symbols are only valid in the European Union. If you wish to dispose of these items, please do so in accordance with applicable national legislation or other rules in your country for the treatment of old electrical equipment and batteries.

Hereby, TCL declares that this device is in compliance with Directive 2014/53/EU. The full text of the EU declaration of conformity is available at the following internet address:

www.tcl.eu

- RF transmitter frequency range: 2402 - 2480MHz
- RF transmitter power: -6dBm - 0dBm
- Operating environment temperature: -25°C - 40°C

Manufacturer

TCL King Electrical Appliances (Huizhou) Co., Ltd.
78#, 4th Huifeng Road, ZhongKai New & High-tech Industries Development Zone,
Huizhou, Guangdong, China 516006

Importer

TCL Operations Polska Sp. z o.o.
ul. A. Mickiewicza 31/41
96-300 Żyrardów, Poland

What's in the box

1. Remote control
2. Two AAA batteries
3. User's manual

Notes:

- *For the purpose of performance improvement, design and specifications are subject to change without notice.*
- *For more information about this remote control and features like voice search, as well as warranty information, please access our official website: www.tcl.eu*

Obsah je uzamčen

Dokončete, prosím, proces objednávky.

Následně budete mít přístup k celému dokumentu.



Proč je dokument uzamčen? Nahněvat Vás rozhodně nechceme. Jsou k tomu dva hlavní důvody:

- 1) Vytvořit a udržovat obsáhlou databázi návodů stojí nejen spoustu úsilí a času, ale i finanční prostředky. Dělali byste to Vy zadarmo? Ne*. Zakoupením této služby obdržíte úplný návod a podpoříte provoz a rozvoj našich stránek. Třeba se Vám to bude ještě někdy hodit.

**) Možná zpočátku ano. Ale vězte, že dotovat to dlouhodobě nelze. A rozhodně na tom nezbohatneme.*

- 2) Pak jsou tady „roboti“, kteří se přiživují na naší práci a „vysávají“ výsledky našeho úsilí pro svůj prospěch. Tímto krokem se jim to snažíme překazit.

A pokud nemáte zájem, respektujeme to. Urgujte svého prodejce. A když neuspějete, rádi Vás uvidíme!