

## 印刷封面 135mm

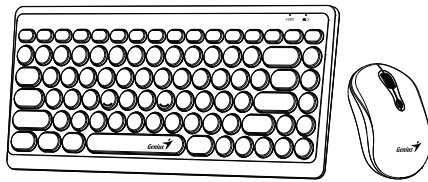
印刷封面 95mm



Genius web : www.geniusnet.com  
OEM/ODM : www.kyec.com

**KYE Systems Corp.**  
#492, Sec. 5, Chongxin Rd., Sanchong Dist.,  
New Taipei City 24160, Taiwan  
Tel: 886-2-2995-6645  
Fax: 886-2-2995-6649  
Email: sim@geniusnet.com.tw  
Email: csd@geniusnet.com.tw (Tech. Support)  
http://www.geniusnet.com

### LuxeMate Q8000 Stylish Wireless Keyboard & Mouse Combo



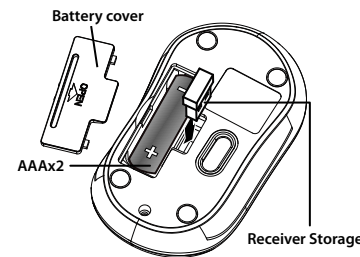
#### Multi-language Quick Guide



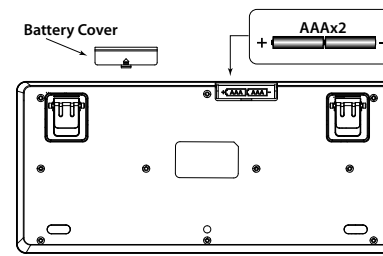
12030088400-A

#### Figure

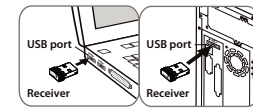
- 1** Remove the battery cover from the mouse. Install one AA battery into the mouse.



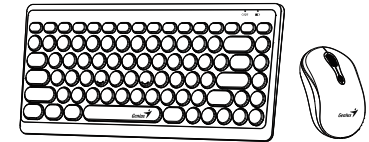
- 2** Remove the battery cover from the keyboard. Install one AAA battery into the keyboard.



- 3** Plug the receiver into your computer



- Connect both devices, wait 5-10 seconds and you are ready to begin



#### Mouse Button Assignments:

1. Left Button: Provides traditional mouse functions like click, double click and drag.
2. Magic-Roller: Scroll the button to surf the Internet and Windows documents.
3. Right Button: Provides traditional mouse right click function
4. DPI: 800 / 1200 / 1600.

#### Replace Batteries

If the mouse or keyboard does not work properly, then the batteries have lost their charge, so you need to replace them.

Warning : do not mix or use different types of batteries at the same time.

#### Notes on Battery Usage

When you use the battery, carefully read and strictly observe the Safety Instructions and the notes described below :

- Different battery types and surrounding temperatures may affect the battery performance.
- Avoid using batteries in extremely cold environments as low temperatures can shorten the battery life and reduce wireless device performance.
- If you are using a new rechargeable battery or rechargeable battery that has not been used for an extended period of time (batteries that pass the expiry date are exceptions) it might affect the period of time according to local regulations.  
you can use this device. Therefore, to maximize their performance and lifetime, we recommend that you fully charge the batteries and discharge them for at least one complete cycle before use.
- The battery or wireless device may feel warm when using for an extended period of time. This is normal and not a malfunction.
- If you will not be using the batteries for an extended period of time, remove them from the wireless device to prevent leakage or corrosion.
- Always keep the terminals in a clean state.
- Risk of explosion if battery is replaced by an incorrect type.
- Dispose of used batteries according to local regulations.

#### English

#### Keyboard function key definition

	Fn + F1	Media Player
	Fn + F2	Volume -
	Fn + F3	Volume +
	Fn + F4	Mute
	Fn + F5	Previous
	Fn + F6	Track
	Fn + F7	Play / Pause
	Fn + F8	Stop Playing
	Fn + F9	Web / Homepage
	Fn + F10	Email
	Fn + F11	My computer
	Fn + F12	My favorite

#### Deutsch

#### Tastaturfunktionstastendefinition

	Fn + F1	Media Player
	Fn + F2	Lautstärke -
	Fn + F3	Lautstärke +
	Fn + F4	Stumm
	Fn + F5	Vorheriger
	Fn + F6	Nächster
	Fn + F7	Wiedergabe / Pause
	Fn + F8	Wiedergabe stoppen
	Fn + F9	Webbrowser
	Fn + F10	Email
	Fn + F11	Mein Computer
	Fn + F12	Mein Favorit

#### Français

#### Définition de la touche de fonction du clavier

	Fn + F1	Lecteur multimédia
	Fn + F2	Volume -
	Fn + F3	Volume +
	Fn + F4	Sourdine
	Fn + F5	Précédent
	Fn + F6	Suivant
	Fn + F7	Lecture / Pause
	Fn + F8	Arrêt de la lecture
	Fn + F9	Navigateur
	Fn + F10	Email
	Fn + F11	mon ordinateur
	Fn + F12	mon préféré

#### Italiano

#### Definizione del tasto funzione tastiera

	Fn + F1	Media Player
	Fn + F2	Volume -
	Fn + F3	Volume +
	Fn + F4	muta
	Fn + F5	Precedente
	Fn + F6	Prossimo
	Fn + F7	Riproduzione / Pausa
	Fn + F8	Ferma Riproduzione
	Fn + F9	Web Browser / Home
	Fn + F10	E-mail
	Fn + F11	Il mio computer
	Fn + F12	Il mio preferito

#### Español

#### Definición de la tecla de función del teclado

	Fn + F1	Reproductor multimedia
	Fn + F2	Volume -
	Fn + F3	Volume +
	Fn + F4	Silencio
	Fn + F5	Anterior
	Fn + F6	Siguiente
	Fn + F7	Reproducir / Pausar
	Fn + F8	Pausar reproducción
	Fn + F9	Navegador de Internet
	Fn + F10	Correo electrónico
	Fn + F11	Mi computadora
	Fn + F12	Mi favorito

#### Brasil

#### Definição da tecla de função do teclado

	Fn + F1	Tocador de Mídia
	Fn + F2	Volume -
	Fn + F3	Volume +
	Fn + F4	Mudo
	Fn + F5	Anterior
	Fn + F6	Próximo
	Fn + F7	Play / Pausa
	Fn + F8	Parar Reprodução
	Fn + F9	Navegador Web
	Fn + F10	E-mail
	Fn + F11	Meu computador
	Fn + F12	Meu favorito

#### Česky

#### Definice funkční klávesy na klávesnici

	Fn + F1	Media Player
	Fn + F2	Hlasitost -
	Fn + F3	Hlasitost +
	Fn + F4	Ztlumení zvuku
	Fn + F5	Předchozí
	Fn + F6	Další
	Fn + F7	Přehrát / Pauza
	Fn + F8	Ukončení přehrávání
	Fn + F9	Internetový prohlížeč
	Fn + F10	Email
	Fn + F11	Můj počítač
	Fn + F12	Můj oblíbený

# Obsah je uzamčen

**Dokončete, prosím, proces objednávky.**

**Následně budete mít přístup k celému dokumentu.**



**Proč je dokument uzamčen? Nahněvat Vás rozhodně nechceme. Jsou k tomu dva hlavní důvody:**

- 1) Vytvořit a udržovat obsáhlou databázi návodů stojí nejen spoustu úsilí a času, ale i finanční prostředky. Dělali byste to Vy zadarmo? Ne\*. Zakoupením této služby obdržíte úplný návod a podpoříte provoz a rozvoj našich stránek. Třeba se Vám to bude ještě někdy hodit.

*\*) Možná zpočátku ano. Ale vězte, že dotovat to dlouhodobě nelze. A rozhodně na tom nezbohatneme.*

- 2) Pak jsou tady „roboti“, kteří se přiživují na naší práci a „vysávají“ výsledky našeho úsilí pro svůj prospěch. Tímto krokem se jim to snažíme překazit.

A pokud nemáte zájem, respektujeme to. Urgujte svého prodejce. A když neuspějete, rádi Vás uvidíme!