



FREE



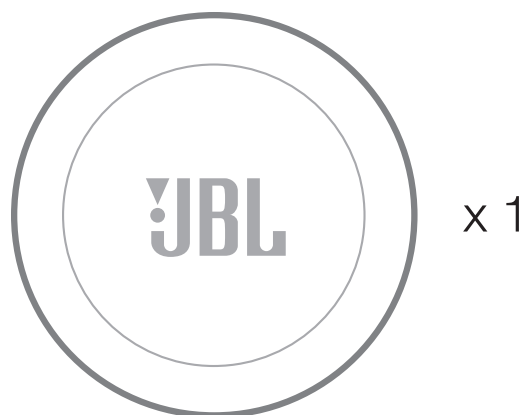
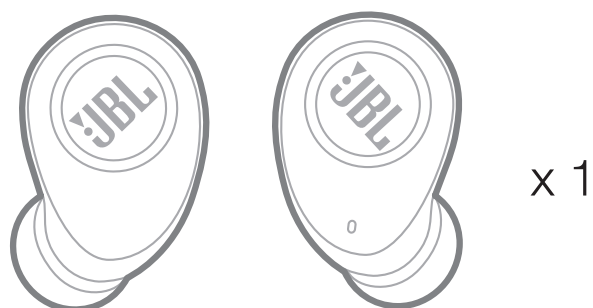
FREE

Quick Start Guide
Guide de démarrage rapide

1 What's in the box

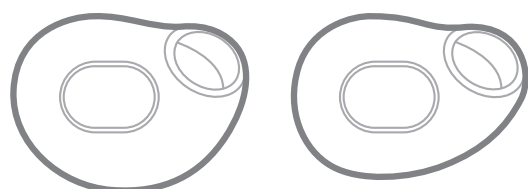
FREE

Charging Case



Gel Sleeves

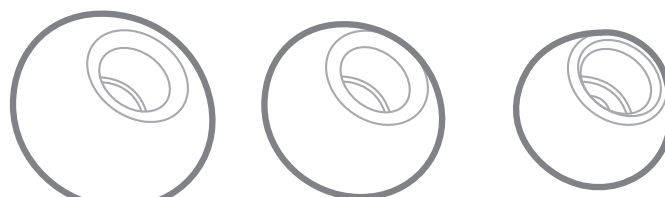
Ear Tips



L

M

x 2 pairs



L

M

S

x 3 pairs

Charging Cable



Warranty card, Warning card, Safety sheet, QSG



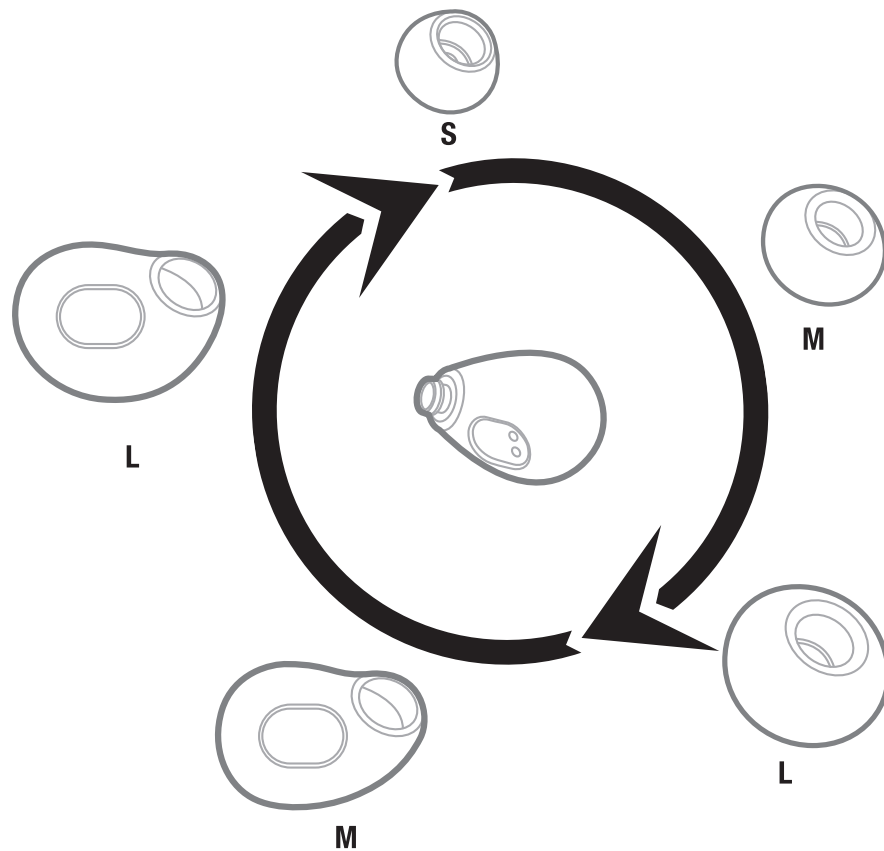
FREE

Quick Start Guide

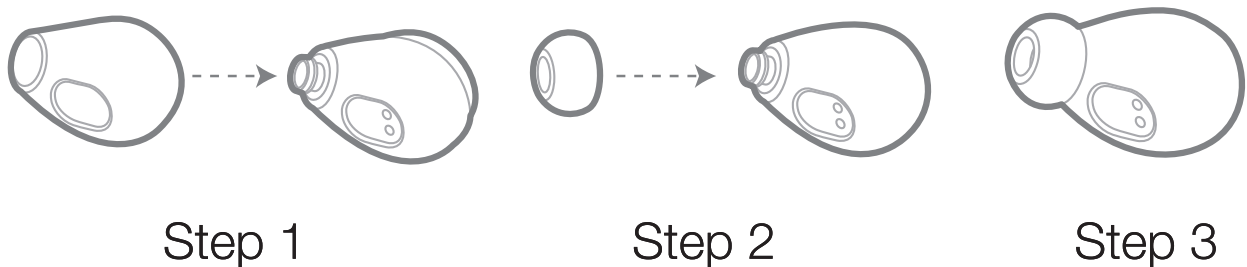
Guide de démarrage rapide

2 Customize your fit

a. Mix and match ear tips and silicone sleeves for a perfect fit and audio performance.



b. Installation



FREE

Quick Start Guide

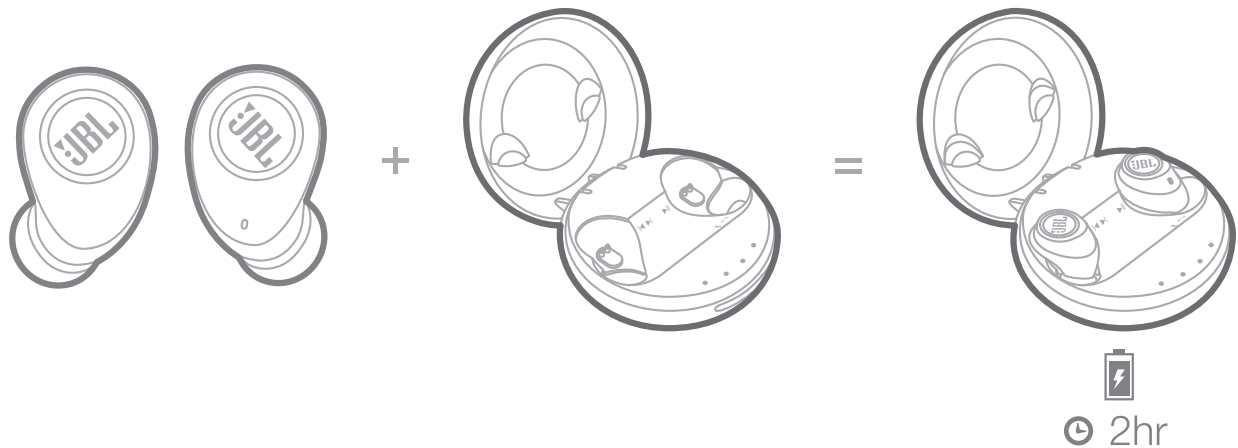
Guide de démarrage rapide

3 Wireless Device Pairing

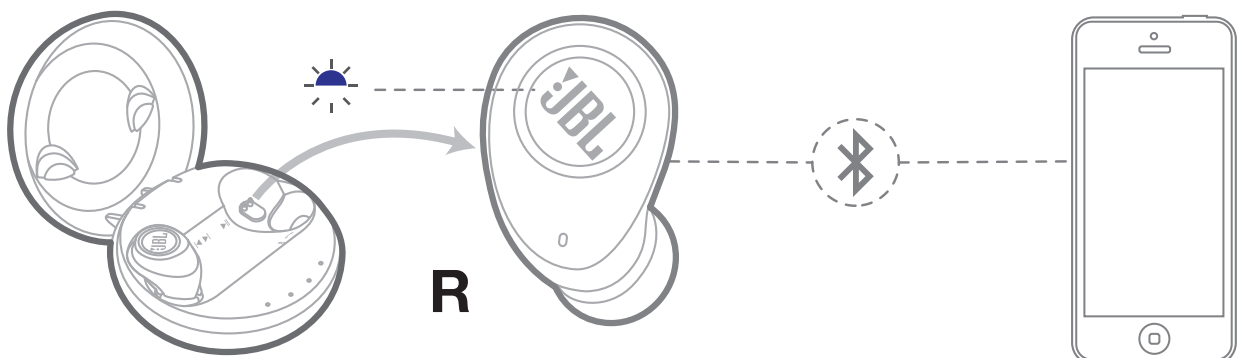
a. First time pairing with device:

Step 1 - Ensure to give the ear pieces a full charge before initiating pairing.

*Ear pieces and charging case are packed separately.



Step 2 - Remove right ear piece from case, it will turn on automatically, entering pairing mode (alt. blue/white).

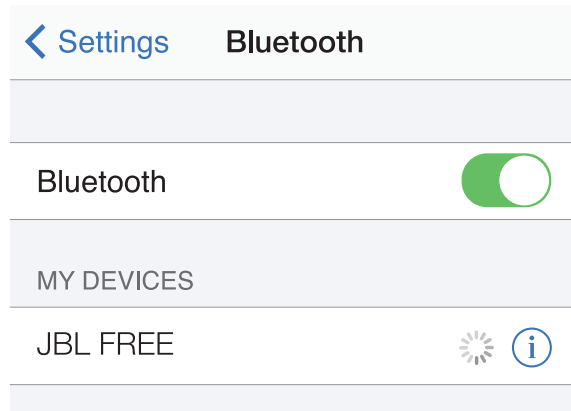
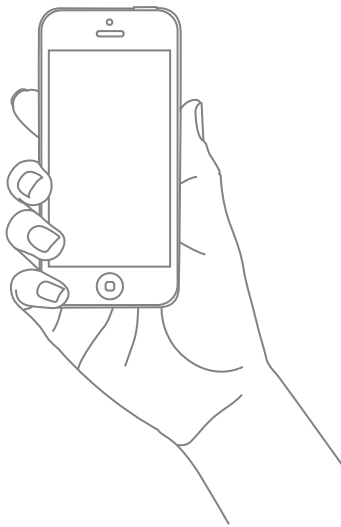


FREE

Quick Start Guide

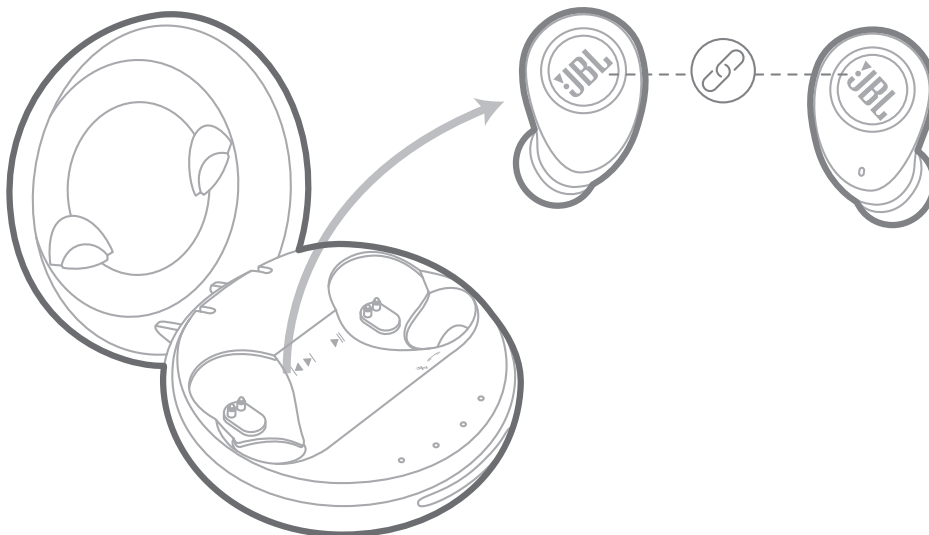
Guide de démarrage rapide

Step 3 - From device, go to Bluetooth menu.



Choose “JBL FREE” to connect

Step 4 - Remove left ear piece from case, it will automatically connect with the right ear piece.



FREE

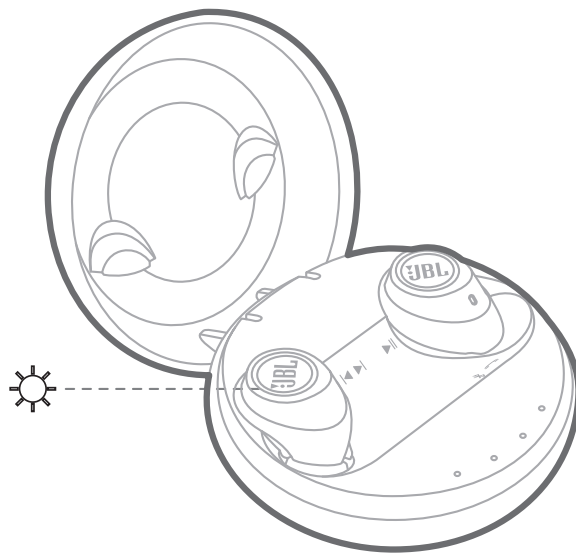
Quick Start Guide

Guide de démarrage rapide

b. From second time onwards:

Wireless connections are automatically established when the headphones are taken out of the case.

c. Ear pieces automatically power off and recharge when put in the charging case.



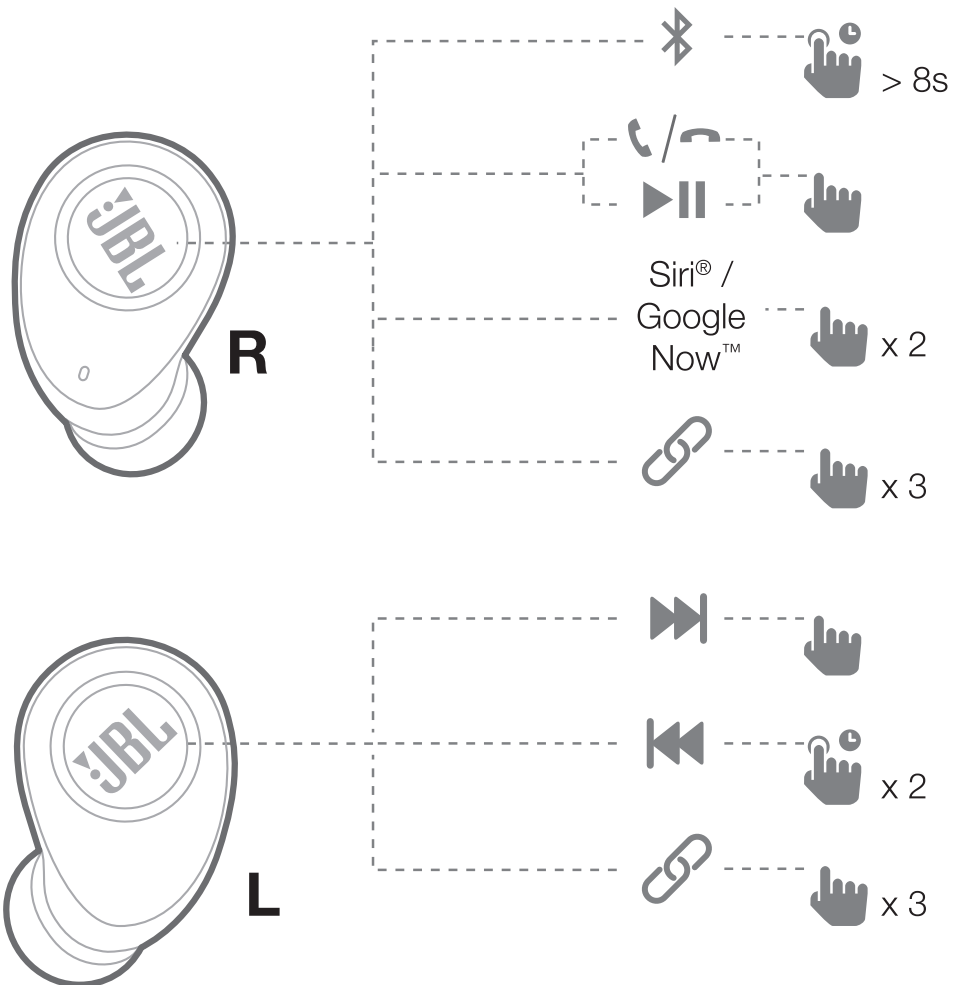
* To turn on ear pieces manually, long press the button on ear piece for 5s.

FREE

Quick Start Guide

Guide de démarrage rapide

4 a. Buttons

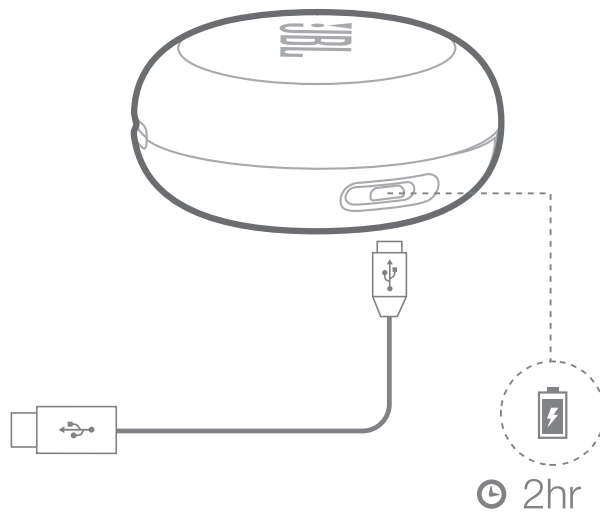


b. Manual power on and off



Quick Start Guide Guide de démarrage rapide

5 Charging



6 Manual controls for special situations

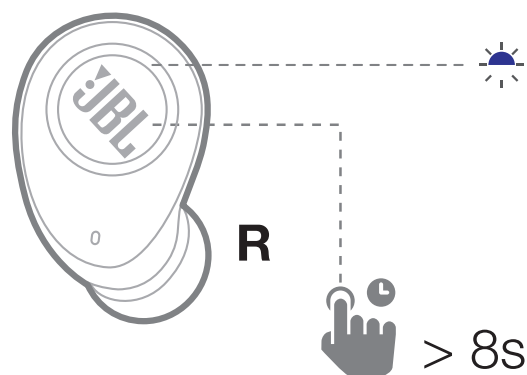
- a. Manual Bluetooth pairing to device when ear pieces do not pair automatically. ✖

FREE

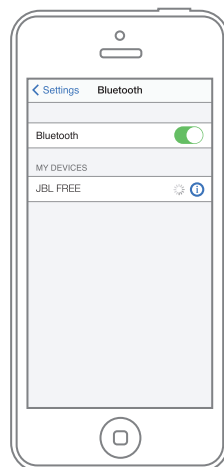
Quick Start Guide

Guide de démarrage rapide

Step 1 - Long press (>8s) right ear piece button when powered off



Step 2 - Choose JBL FREE



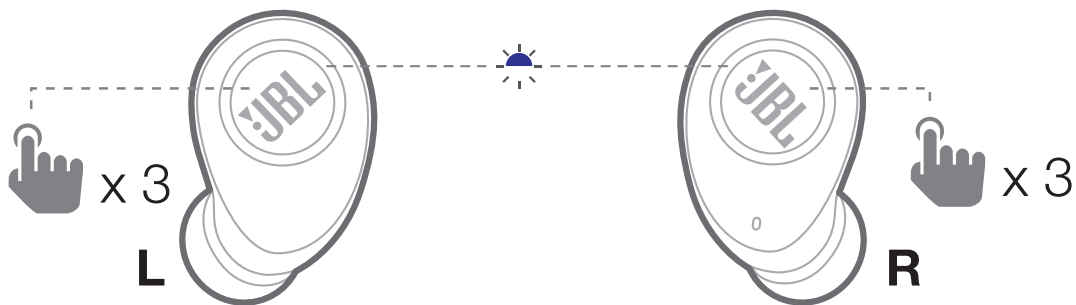
Choose "JBL FREE" to connect

FREE

Quick Start Guide

Guide de démarrage rapide

- b. Manual pairing of left and right ear pieces when  connection is lost.



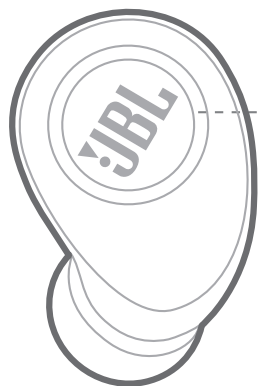
- c. Manual power off.



FREE

Quick Start Guide Guide de démarrage rapide

7 a. LED Behaviors



State		LED behaviors
Charging		☀ Solid white
Device pairing	📶	🌈 Blue/white flash
Device connected	🔗	🌈 Blue fade in / fade out
Battery low	🔋	☀ White fade in / fade out

FR

État		Signification des LED
Recharge		☀ Blanc fixe
Jumelage d'appareil	📶	🌈 Clignotement bleu/blanc
Appareil connecté	🔗	🌈 Pulsations bleues
Batterie faible	🔋	☀ Pulsations blanches

ES

Estado		Comportamientos del LED
Cargando		☀ Blanco fijo
Emparejamiento de dispositivos	📶	🌈 Parpadeo azul/blanco
Dispositivo conectado	🔗	🌈 Encendido/apagado lento en azul
Batería baja	🔋	☀ Encendido/apagado lento en blanco

DE

Zustand		LED-Verhalten
Aufladen		☀ Konstant weiß
Gerätekopplung	📶	🌈 Blau/weiß blinkend
Gerät verbunden	🔗	🌈 Blau zu-/abnehmend
Batteriestand niedrig	🔋	☀ Weiß zu-/abnehmend

IT

Stato		Comportamento LED
In carica		☀ bianco fisso
Sincronizzazione con dispositivo	📶	🌈 Blu/bianco lampeggiante
Dispositivo connesso	🔗	🌈 Blu in aumento / in diminuzione
Batteria scarica	🔋	☀ Bianco in aumento / in diminuzione

NL

Status		LED-gedrag
Opladen		☀ continu wit
Apparaat koppelen	📶	🌈 Blauw/wit knipperend
Apparaat aangesloten	🔗	🌈 Blauw fade in / fade out
Batterij bijna leeg	🔋	☀ Wit fade in / fade out

NO

Status		LED-atferd
Lading		☀ lyser hvitt
Enhetsparing	📶	🌈 Blinker blått/hvitt
Enheter er tilkoblet	🔗	🌈 Blått, toner inn / toner ut
Lavt batteri	🔋	☀ Hvitt, toner inn / toner ut

Quick Start Guide

Guide de démarrage rapide

b. Charging case: LED behavior

EN

LED(s)	Battery Status	Power On
LED 1	<25%	● On
LED 2	50%	● On
LED 3	75%	● On
LED 4	100%	● On

Warning: Switch off the charging case when not in use to avoid battery damage.

ES

LED(s)	Estado de la batería	Encendido
LED 1	<25%	● Encendido
LED 2	50%	● Encendido
LED 3	75%	● Encendido
LED 4	100%	● Encendido

Advertencia: Apaga el estuche de carga mientras no se utilice para evitar daños en la batería.

FR

LED(s)	État de la batterie	Marche
LED 1	<25%	● MARCHE
LED 2	50%	● MARCHE
LED 3	75%	● MARCHE
LED 4	100%	● MARCHE

Avertissement : Éteignez le boîtier de charge lorsqu'il n'est pas utilisé afin de ne pas endommager la batterie.

DE

LED(s)	Akkustatus	Einschalten
LED 1	<25%	● EIN
LED 2	50%	● EIN
LED 3	75%	● EIN
LED 4	100%	● EIN

Warnung: Schalte die Ladeschale bei Nichtgebrauch aus, um Schäden an den Akkus zu vermeiden.

FREE

Quick Start Guide

Guide de démarrage rapide

EN

- Model: JBL FREE X
- Bluetooth version: 4.2
- Support: A2DP V1.3, AVRCP V1.5, HFP V1.6
- Headset Battery type: Lithium-ion polymer (3.7V, 85mA)
- Bluetooth transmitter power < 9.5dBm
- Bluetooth transmitter frequency range: 2.402 – 2.480GHz
- Bluetooth transmitter modulation: GFSK, $\pi/4$ DQPSK, 8DPSK
- Dynamic drivers: 5.6mm
- Frequency Response: 10Hz – 22 kHz
- Charging case battery: 1,500 mA (est)
- Earbuds Battery life: Up to 4 hours
- Charging time: < 2 hours
- **Compatibility:** Use with Phones, Tablets, Computers
- Weight : 99g

FR

- Modèle : JBL FREE X
- Version Bluetooth : 4.2
- Support : A2DP V1.3, AVRCP V1.5, HFP V1.6
- Type de batterie du casque : Lithium-ion polymère (3,7 V, 85 mA)
- Puissance de l'émetteur Bluetooth < 9,5 dBm
- Bande de fréquences de l'émetteur Bluetooth : 2,402 - 2,480 GHz
- Modulation de l'émetteur Bluetooth : GFSK, $\pi/4$ DQPSK 8DPSK
- Haut-parleurs dynamiques : 5,6 mm
- Réponse en fréquence : 10 Hz - 22 kHz
- Batterie du boîtier de charge : 1 500 mA (env.)
- Autonomie de batterie des écouteurs : jusqu'à 4 heures
- Durée de la charge : < 2 heures
- **Compatibilité :** Utilisation avec des téléphones, tablettes, ordinateurs
- Poids (g) : 99 g

FREE

Quick Start Guide

Guide de démarrage rapide

IC RF Exposure Information and Statement

The SAR limit of Canada (C) is 1.6 W/kg averaged over one gram of tissue. Device types: (IC: 6132A-JBLFREEEX) has also been tested against this SAR limit. According to this standard, the highest SAR value reported during product certification for head use is 0.049 W / kg.

The device was tested for typical bodily operations where the product was kept 5 mm from the head. To maintain compliance with IC RF exposure requirements, use accessories that maintain a separation distance of 0mm between the user's head and the back of the headset. The use of belt clips, holsters and similar accessories shall not contain metal parts in its assembly. Use of accessories that do not meet these requirements may not comply with IC RF exposure requirements and should be avoided.

Head operation

The device was subjected to a typical head manipulation test. In order to comply with RF exposure requirements, a minimum separation distance of 0 cm must be maintained between the user's ear and the product (including the antenna). Head exposure that do not meet these requirements may not meet RF exposure requirements and should be avoided. Use only the supplied or approved antenna.

IC: 6132A-JBLFREEEX

Informations et énoncés sur l'exposition RF de l'IC.

La limite DAS du Canada (C) est de 1,6 W/kg, arrondie sur un gramme de tissu. Types d'appareils: (IC: 6132A-JBLFREEEX) a également été testé en relation avec cette limite DAS selon ce standard. La valeur DAS la plus élevée mesurée pendant la certification du produit pour une utilisation au niveau de la tête est de 0,049 W / kg.

L'appareil a été testé dans des cas d'utilisation typiques en relation avec le corps, où le produit a été utilisé à 5 mm de la tête. Pour continuer à respecter les standards d'exposition RF de l'IC, utilisez des accessoires qui maintiennent une distance de séparation de 0 mm entre la tête de l'utilisateur et l'arrière du casque. L'utilisation de clips de ceinture, d'étui ou d'accessoires similaires ne doivent pas contenir de pièces métalliques. Les accessoires ne respectant pas ces exigences peuvent ne pas respecter les standards d'exposition RF de l'IC et doivent être évités.

Utilisation au niveau de la tête

L'appareil est testé dans un cas d'utilisation typique autour de la tête. Pour respecter les standards d'exposition RF, une distance de séparation minimum de 0 cm doit être maintenue entre l'oreille et le produit (antenne comprise). L'exposition de la tête ne respectant pas ces exigences peut ne pas respecter les standards d'exposition RF et doit être évité. Utilisez uniquement l'antenne incluse ou une antenne certifiée.

IC: 6132A-JBLFREEEX

FCC AND IC STATEMENT FOR USERS

THIS DEVICE COMPLIES WITH PART 15 OF THE FCC RULES. OPERATION IS SUBJECT TO THE FOLLOWING TWO CONDITIONS: (1) THIS DEVICE MAY NOT CAUSE HARMFUL INTERFERENCE, AND (2) THIS DEVICE MUST ACCEPT ANY INTERFERENCE RECEIVED, INCLUDING INTERFERENCE THAT MAY CAUSE UNDESIRED OPERATION. CAN ICES-3 (B) / NMB-3 (B).

FEDERAL COMMUNICATION COMMISSION INTERFERENCE STATEMENT

THIS EQUIPMENT HAS BEEN TESTED AND FOUND TO COMPLY WITH THE LIMITS FOR A CLASS B

Quick Start Guide

Guide de démarrage rapide

DIGITAL DEVICE, PURSUANT TO PART 15 OF THE FCC RULES. THESE LIMITS ARE DESIGNED TO PROVIDE REASONABLE PROTECTION AGAINST HARMFUL INTERFERENCE IN A RESIDENTIAL INSTALLATION. THIS EQUIPMENT GENERATES, USES AND CAN RADIATE RADIO FREQUENCY ENERGY AND, IF NOT INSTALLED AND USED IN ACCORDANCE WITH THE INSTRUCTIONS, MAY CAUSE HARMFUL INTERFERENCE TO RADIO COMMUNICATIONS. HOWEVER, THERE IS NO GUARANTEE THAT INTERFERENCE WILL NOT OCCUR IN A PARTICULAR INSTALLATION. IF THIS EQUIPMENT DOES CAUSE HARMFUL INTERFERENCE TO RADIO OR TELEVISION RECEPTION, WHICH CAN BE DETERMINED BY TURNING THE EQUIPMENT OFF AND ON, THE USER IS ENCOURAGED TO TRY TO CORRECT THE INTERFERENCE BY ONE OR MORE OF THE FOLLOWING MEASURES:

- REORIENT OR RELOCATE THE RECEIVING ANTENNA.
- INCREASE THE SEPARATION BETWEEN THE EQUIPMENT AND RECEIVER.
- CONNECT THE EQUIPMENT INTO AN OUTLET ON A CIRCUIT DIFFERENT FROM THAT TO WHICH THE RECEIVER IS CONNECTED.
- CONSULT THE DEALER OR AN EXPERIENCED RADIO/TV TECHNICIAN FOR HELP.

INSTRUCTIONS FOR USERS ON REMOVAL, RECYCLING AND DISPOSAL OF USED BATTERIES

FOR PRODUCTS WITH A BUILT-IN BATTERY THAT LASTS FOR THE LIFETIME OF THE PRODUCT, REMOVAL MAY NOT BE POSSIBLE FOR THE USER. IN THIS CASE, RECYCLING OR RECOVERY CENTERS HANDLE THE DISMANTLING OF THE PRODUCT AND THE REMOVAL OF THE BATTERY. IF, FOR ANY REASON, IT BECOMES NECESSARY TO REPLACE SUCH A BATTERY, THIS PROCEDURE MUST BE PERFORMED BY AUTHORIZED SERVICE CENTERS.

IN THE EUROPEAN UNION AND OTHER LOCATIONS, IT IS ILLEGAL TO DISPOSE OF ANY BATTERY WITH HOUSEHOLD TRASH. ALL BATTERIES MUST BE DISPOSED OF IN AN ENVIRONMENTALLY SOUND MANNER. CONTACT YOUR LOCAL WASTE-MANAGEMENT OFFICIALS FOR INFORMATION REGARDING THE ENVIRONMENTALLY SOUND COLLECTION, RECYCLING AND DISPOSAL OF USED BATTERIES.

WARNING: DANGER OF EXPLOSION IF BATTERY IS INCORRECTLY REPLACED. TO REDUCE RISK OF FIRE OR BURNS, DON'T DISASSEMBLE, CRUSH, PUNCTURE, SHORT EXTERNAL CONTACTS, EXPOSE TO TEMPERATURE ABOVE 60°C (140°F), OR DISPOSE OF IN FIRE OR WATER. REPLACE ONLY WITH SPECIFIED BATTERIES.

THE SYMBOL INDICATING 'SEPARATE COLLECTION' FOR ALL BATTERIES AND ACCUMULATORS SHALL BE THE CROSSED-OUT WHEELED BIN SHOWN BELOW:



IN CASE OF BATTERIES, ACCUMULATORS AND BUTTON CELLS CONTAINING MORE THAN 0.0005% MERCURY, MORE THAN 0.002% CADMIUM OR MORE THAN 0.004% LEAD, SHALL BE MARKED WITH THE CHEMICAL SYMBOL FOR THE METAL CONCERNED: Hg, Cd, OR Pb RESPECTIVELY. PLEASE REFER TO THE BELOW SYMBOL:



Pb



Cd



Hg

FREE

Quick Start Guide

Guide de démarrage rapide

WARNING

DO NOT ATTEMPT TO OPEN, SERVICE, OR DISASSEMBLE THE BATTERY | DO NOT SHORT CIRCUIT | MAY EXPLODE IF DISPOSED OF IN FIRE | RISK OF EXPLOSION IF BATTERY IS REPLACED BY AN INCORRECT TYPE | DISPOSE OR RECYCLE USED BATTERIES ACCORDING TO THE INSTRUCTIONS

低功率射頻電機警語標示內容：「(1)經型式認證合格之低功率射頻電機，非經許可，公司、商號或使用者均不得擅自變更頻率、加大功率或變更原設計之特性及功能。(2)低功率射頻電機之使用不得影響飛航安全及干擾合法通信；經發現有干擾現象時，應立即停用，並改善至無干擾時方得繼續使用。前項合法通信，指依電信法規定作業之無線電通信。低功率射頻電機須忍受合法通信或工業、科學及醫療用電波輻射性電機設備之干擾。」

해당무선설비는전파혼신가능성이있으므로인명안전과관련된서비스는할수없음

Este equipamento não tem direito à proteção contra interferência prejudicial e não pode causar interferência em sistemas devidamente autorizados.

Este produto está homologado pela ANATEL, de acordo com os procedimentos regulamentados pela Resolução 242/2000, e atende aos requisitos técnicos aplicados.

Para maiores informações, consulte o site da ANATEL – www.anatel.gov.br



The Bluetooth® word mark and logos are registered trademarks owned by Bluetooth SIG, Inc. and any use of such marks by HARMAN International Industries, Incorporated is under license. Other trademarks and trade names are those of their respective owners.







FREE

Truly wireless in-ear headphones



CALLS



MUSIC



ACTIVE

Calls, music, active – your choice. No Wires.

JBL Free truly wireless in-ear headphones deliver JBL Signature Sound in an intuitive, yet intelligent package. Completely free from wires and easy to use, the JBL Free is your flexible companion for calls, music and an active lifestyle. You get 24 hours of combined playback: 4hrs of continuous listening on the headphones plus 20 hours of backup from the smart charging case. Comfort Stay Secure Fit ergonomics with 3 ear-tip and 2 gel sleeve sizes provide a tailored fit for all day wear and active use. The splashproof worry free IPX5 certified design keeps the music playing through sunshine and rain. Step up your listening experience in three easy ways: (1) use one earbud for calls, (2) use two earbuds for immersive music and (3) add the gel sleeves for secure fit during workouts.

Features

- ▶ Truly wireless
- ▶ JBL Signature Sound
- ▶ 24 hours of combined playback
- ▶ Smart charging case
- ▶ Handsfree calls
- ▶ Call mode
- ▶ Easy controls
- ▶ Comfort Stay Secure Fit
- ▶ Splashproof





FREE

Truly wireless in-ear headphones



Features and Benefits

Truly wireless

Discover the freedom of a wireless lifestyle listening to music, managing your calls or working-out.

JBL Signature Sound

Immersive JBL Signature Sound delivered in an intuitive, intelligent package.

24 hours of combined playback

Enjoy an entire day of wireless audio, with 4 hours of continuous playback and 20 hours of backup power from the charging case.

Smart charging case

Protect the headphones and charge them when not in use. Provides over 20 hours of total backup charge, with a 15-minute quick charge for 1 hour of music playback.

Handsfree calls

Integrated microphone for clear phone calls. Automatic stereo-mono mode switching for a natural call experience.

Call mode

Automatically switches to mono when making phone calls, for a more natural call experience.

Easy controls

Take full control of your calls and music with a single intuitive button.

Comfort Stay Secure Fit

Best-in-class ergonomics with 3 ear tip sizes and 2 gel sleeve sizes ensure a secure fit that stays with you, no matter what you are doing.

Splashproof

IPX5-certified design keeps the music playing through sunshine and rain.

What's in the box:

- 1 x JBL Free headphones
- 1 x Charging case
- 2 x sets of gel sleeves (M, L)
- 3 x sets of silicone ear tips (S, M, L)
- 1 x Micro USB charging cable
- 1 x Quick start guide
- 1 x Safety sheet
- 1 x Warranty
- 1 x Warning sheet

Technical specifications:

- ▶ Bluetooth® version: 4.2
- ▶ Support: A2DP V1.3, AVRCP V1.6, HFP V1.6, HSP V1.2
- ▶ Headset battery type: Lithium-ion polymer (3.7V, 85mAh)
- ▶ Bluetooth® transmitter power: <9.5dBm
- ▶ Bluetooth® transmitter frequency range: 2.402 – 2.480GHz
- ▶ Bluetooth® transmitter modulation: GFSK, $\pi/4$ DQPSK, 8DPSK
- ▶ Dynamic drivers: 5.6mm
- ▶ Frequency response: 10Hz – 22kHz
- ▶ Charging case battery: 1,500mAh (est)
- ▶ Ear bud battery life: Up to 4 hours
- ▶ Charging time: <2 hours
- ▶ Compatibility: Use with Phones, Tablets, Computers
- ▶ Product weight: 99g



HARMAN International Industries, Incorporated
8500 Balboa Boulevard, Northridge, CA 91329 USA
www.jbl.com

© 2017 HARMAN International Industries, Incorporated. All rights reserved. JBL is a trademark of HARMAN International Industries, Incorporated, registered in the United States and/or other countries. The Bluetooth® word mark and logos are registered trademarks owned by Bluetooth SIG, Inc. and any use of such marks by HARMAN International Industries, Incorporated is under license. Other trademarks and trade names are those of their respective owners. Features, specifications and appearance are subject to change without notice.



**WARRANTY CARD / BON DE GARANTIE / TARJETA DE GARANTÍA /
CERTIFICATO DI GARANZIA / GARANTIEKARTE / ГАРАНТИЙНЫЙ ТАЛОН /
CARTÃO DE GARANTIA / GARANTIKORT / TAKUUKORTTI**



HARMAN International Industries, Incorporated
8500 Balboa Boulevard, Northridge, CA 91329 USA
www.harman.com

HARMAN International Industries, Incorporated. All rights reserved.

Harman Kardon is a trademark of HARMAN International Industries, Incorporated,
registered in the United States and/or other countries.

Features, specifications and appearance are subject to change without notice.

TR04082_E



**HARMAN PRODUCT
WARRANTY AGAINST DEFECTS FOR AUSTRALIA**

Ingram Micro Pty Limited (ABN 45 112 487 966) of 61 Dunning Avenue, Rosebery NSW 2018 ("Ingram Micro") is an authorized distributor of Harman International Industries Ltd products ("Products"). This warranty against defects shall only apply to Products distributed by Ingram Micro and sold to you within Australia after 1 April 2016. Please refer to Harman's Limited Warranty enclosed here for further information on Product warranty.

Warranty against defects:

Harman Products come with guarantees that cannot be excluded under the Australian Consumer Law. During the warranty period, you are entitled to a replacement or refund for a major failure and compensation for any other reasonably foreseeable loss or damage. You are also entitled to have the goods repaired or replaced if the goods fail to be of acceptable quality and the failure does not amount to a major failure. Subject to the terms and conditions herein and Harman's Limited Warranty, Ingram Micro will repair or replace without charge any manufacturing defects that appear in Harman Products within the warranty period identified for the product in the table below, commencing on the date of original purchase. You are entitled to have the defective Product repaired, replaced or a refund in accordance to your rights under law. The benefits given to you by this Warranty are in addition to other rights and remedies you may have under law and nothing in this Warranty purports to restrict, modify or exclude your legal rights as consumer under Australian Law.

Brand	Category	Warranty Period	Global Warranty
Harman Kardon	Home Audio Components	2 Years	No
	Home Theatre systems (including sub woofers/Satellite speakers)	2 Years	No
	Multimedia/clocking and portable speakers	1 Year	No
	Headphones	1 Year	No
JBL	Passive Loudspeakers	5 Years	No
	Active Loudspeakers(including subwoofers)	2 Years	No
	Home Theatre systems(including subwoofer/satellite speakers)	2 Years	No
	Multimedia/clocking and portable speakers	1 Year	No
	Headphones	1 Year	No
	Car Audio Components	1 Year	No
Yurbuds	Headphones	1 Year	No
Infinity	Passive Loudspeakers	5 Years	No
	Active Loudspeakers(including subwoofers)	2 Years	No
	Multimedia/clocking and portable speakers	1 Year	No
Under Armour	Headphones	1 Year	No
AKG	Headphones	1 Year	No

How to Claim:

To make a claim under this warranty, you should contact the seller who sold you the Product, or contact the Harman customer support team at + 61 2 9151 0376 or email support.apac@harman.com. You are responsible for the cost of returning the defective Product unless notified otherwise.

EN WARRANTY CARD

SET UP INFORMATION & PRODUCT REGISTRATION

Congratulations with the purchase of your new Product. We have done our utmost to make your experience the best one possible. If you have any questions when setting up your Product and would like some helpful hints, we recommend that you visit the relevant country specific support website for your Product: www.jbl.com. There you will also find relevant contact information. If you cannot find the information you are looking for, please contact the vendor that sold the Product to you or contact the relevant JBL customer support center by electronic mail or phone.

We recommend that you register your Product via the relevant country specific website for your Product. Your registration will allow us to inform you about updates for certain products, possible new offers and new Products and/or applications. Registering is easy; just follow the instructions on the relevant country specific website for your Product.

NOTE: THIS LIMITED WARRANTY DOES NOT APPLY TO CONSUMERS IN THE EUROPEAN ECONOMIC AREA (EEA) MEMBER STATES AND THE RUSSIAN FEDERATION AS THEY ARE PROTECTED BY LOCAL CONSUMER LAW AND BENEFIT FROM LOCAL STATUTORY WARRANTIES

LIMITED WARRANTY

WHO IS PROTECTED BY THE WARRANTY

This limited warranty (the "Limited Warranty") protects only the original end-user ("you" or "your"), and is not transferable and is applicable only in the country (excluding EEA member states and the Russian Federation) in which you originally purchased your JBL Product (the "Product"). Any attempt to transfer this warranty shall immediately make this warranty void.

LIMITED WARRANTY

HARMAN International Industries, Incorporated ("HARMAN") is the manufacturer and through its local subsidiary, warrants to you that the Product (including components provided in/with the Product) will be free from defects in workmanship and materials for a period of ONE year from the date of retail purchase by you (the "Warranty Period"). During the Warranty Period, the Product (including components), will be repaired or replaced at HARMAN's option, without charge for either parts or labor OR at HARMAN's sole option, the price of the Product may be refunded, subject to depreciation based on your purchase price for the Product pro-rated over the remaining balance of the Warranty Period. Any warranty service or replacement of parts will not extend the Warranty Period.

This Limited Warranty does not cover defects which are a result of: (1) damage caused by accident, unreasonable use or neglect (including the lack of reasonable and necessary maintenance); (2) damage during shipment (claims must be presented to the carrier); (3) damage to, or deterioration of, any accessory or decorative surface; (4) damage resulting from failure to follow instructions contained in your owner's manual; (5) damage resulting from the performance of repairs by someone other than an authorized JBL service center; (6) deterioration of component parts, the nature of which is to become worn or depleted with use, such as batteries and headphone ear pads.

Furthermore, this Limited Warranty covers only actual defects within the Product itself, and does not cover the cost of installation or removal from a fixed installation, setup or adjustments, claims based on misrepresentation by the seller, performance variations resulting from installation-related circumstances such as source quality or AC power or Product modifications, any unit on which the serial number has been effaced, modified or removed, or units used for other than home use. This Limited Warranty is valid only for JBL products purchased from an authorized dealer.

Except to the extent expressly prohibited in your jurisdiction by applicable law, all implied warranties, including fitness for a particular purpose and merchantability are hereby excluded and in no event shall HARMAN or any HARMAN subsidiary be liable for any indirect, direct, incidental, special or consequential loss or damages whatsoever (including, without limitation, other pecuniary loss) arising out of the use of or inability to use the Product, even if HARMAN and/or a HARMAN subsidiary have been advised of the possibility of such damages. To any extent that HARMAN cannot lawfully disclaim implied warranties under this Limited Warranty, all such implied warranties are limited in duration to the duration of this warranty. Some jurisdictions do not allow the exclusion or limitation of incidental or consequential damages or exclusions or limitations on the duration of implied warranties or conditions, so the above limitations or exclusions may not apply to you. This warranty gives you specific legal rights, and you may also have other rights that vary by jurisdiction.

HOW TO OBTAIN WARRANTY SERVICE

Contact the dealer who sold you this Product, or contact JBL customer support using the contact information on the relevant country specific support website for your Product to request warranty service. To validate your right to this Limited Warranty, you must provide the original sales invoice or other proof of ownership and date of purchase. Do not return your Product without prior authorization from the corresponding dealer or HARMAN. Warranty repair of the HARMAN Product must be carried out by an authorized dealer or service center. Unauthorized warranty repair will void the warranty and is performed at your sole risk.

You are also welcome to consult the relevant country specific HARMAN support website for your Product for helpful hints.

WHO PAYS FOR WHAT

This Limited Warranty covers all expenses for labor and materials required for the repair OR replacement of the Product that is found to be defective, and a reasonable return shipping charge within the country of repair. Please be sure to save the original shipping carton(s), because a charge will be made for additional cartons/packaging.

You will be charged for the cost of examining a unit that is not in need of repair (including resulting shipping costs), or for necessary repairs not covered by this Limited Warranty.

We sincerely thank you for your expression of confidence in JBL. We wish you many years of listening pleasure.



HARMAN International Industries, Incorporated
8500 Balboa Boulevard, Northridge, CA 91329 USA
www.harman.com

HARMAN International Industries, Incorporated. All rights reserved.
JBL is a trademark of HARMAN International Industries, Incorporated, registered in
the United States and/or other countries.

Features, specifications and appearance are subject to change without notice.

TR02994-080-2434-E

ATTENTION! / CONSEILS DE SÉCURITÉ ! / SICHERHEITSHINWEIS! /
ATTENZIONE! / ; ATENCIÓN! / INDICAÇÕES DE SEGURANÇA! /
INFORMAÇÃO DE SEGURANÇA! / SIKKERHETSHENVISNING! /
SÄKERHETSANVISNINGAR! / TURVALLISUUSOHJE! /
VEILIGHEIDSINSTRUCTIE! / WSKAZÓWKA BEZPIECZEŃSTWA! /
BEZPEČNOSTNÍ POKYN! / POZOR! / BIZTONSÁGI TUDNIVALÓK! / UYARI! /
УКАЗАНИЕ ПО МЕРАМ БЕЗОПАСНОСТИ! / 警告! / 安全提示! / 경고!

EN



WARNING !

- To guarantee your personal safety, please ensure that these headphones are not worn or kept in the immediate vicinity (closer than 10 cm) of a pacemaker.
 - Do not insert jack plug into electric sockets.
 - Supervise children when using the equipment.
- The product is not a toy.



Headphone listening at high volume levels
– particularly over extended
periods of time – may damage your hearing.

IMPORTANT!

The operation of switches on your hi-fi system or plugging in the head-phones may cause clicks which at high volume settings may affect your hearing. Therefore, always set the volume control to minimum before switching between different sources (tuner, turntable, CD player, etc.) or plugging in the headphones. For traffic safety, do not use headphones while driving or cycling. The ear pads may deteriorate due to long-term storage or use.



INFORMATION ON DISPOSAL FOR USERS OF WASTE ELECTRICAL & ELECTRONIC EQUIPMENT (PRIVATE HOUSHOLD)

This symbol on the products and/or accompanying documents means that used electrical and electronic products should not be mixed with general household waste. For proper treatment, recovery and recycling, please take these products to designated collection points, where they will be accepted on a free of charge basis. Alternatively, in some countries you may be able to return your products to your local retailer upon the purchase of an equivalent new product. Disposing of this product correctly will help to save valuable resources and prevent any potential negative effects on human health and the environment which could otherwise arise from inappropriate waste handling. Please contact your local authority for further details of your nearest designated collection point. Penalties may be applicable for incorrect disposal of this waste, in accordance with national legislation.

INFORMATION ON DISPOSAL IN OTHER COUNTRIES OUTSIDE THE EUROPEAN UNION

This symbol is only valid in the European Union. If you wish to discard this product, please contact your local authorities or dealer and ask for the correct method of disposal.



US AND CANADA

FCC AND IC STATEMENT:

This device complies with Part 15 of the FCC rules and Industry Canada license-exempt RSS standard(s). Operation is subject to the following two conditions:

(1) This device may not cause harmful interference; and (2) this device must accept any interference received, including interference that may cause undesired operation.

CAN ICES-3(B)/NMB-3(B)

FCC/IC RADIATION EXPOSURE STATEMENT

This equipment complies with FCC/IC RSS-102 radiation exposure limits set forth for an uncontrolled environment.

DÉCLARATION DE LA FCC ET D'IC

Le présent appareil est conforme aux CNR d'Industrie Canada applicables aux appareils radio exempts de licence. L'exploitation est autorisée aux deux conditions suivantes : (1) l'appareil ne doit pas produire de brouillage, et (2) l'utilisateur de l'appareil doit accepter tout brouillage radioélectrique subi, même si le brouillage est susceptible d'en compromettre le fonctionnement.

DÉCLARATION DE LA FCC ET D'IC SUR L'EXPOSITION AUX RADIATIONS

Cet appareil est conforme à la norme RSS 102 de la FCC/IC relative aux limites d'exposition aux radiations dans un environnement non contrôlé.

Federal Communication Commission Interference Statement

This equipment has been tested and found to comply with the limits for a Class B digital device, pursuant to Part 15 of the FCC Rules. These limits are designed to provide reasonable protection against harmful interference in a residential installation. This equipment generates, uses and can radiate radio frequency energy and, if not installed and used in accordance with the instructions, may cause harmful interference to radio communications. However, there is no guarantee that interference will not occur in a particular installation. If this equipment does cause harmful interference to radio or television reception, which can be determined by turning the equipment off and on, the user is encouraged to try to correct the interference by one or more of the following measures:

- Reorient or relocate the receiving antenna.
- Increase the separation between the equipment and receiver.
- Connect the equipment into an outlet on a circuit different from that to which the receiver is connected.
- Consult the dealer or an experienced radio/TV technician for help.

FCC Caution: Any changes or modifications not expressly approved by the party responsible for compliance could void the user's authority to operate this equipment.

此产品含有内置锂电池，请勿将此产品暴露在强烈的日照下，烘烤或过热的环境中。

FOR JAPAN

本製品に内蔵しているリチウム充電電池はリサイクルができません。製品を廃棄するにあたり、リサイクルにご協力ください。ご使用済の製品本体を下記宛先まで着払いにてお送りください。

送り先:

ハーマンインターナショナル株式会社 サービスセンター
〒252-1123

神奈川県綾瀬市早川2696番地12 株式会社HIROSE内
TEL: 0570-550-465 (ナビダイヤル)

FOR EU COUNTRIES

WEEE NOTICE

The Directive on Waste Electrical and Electronic Equipment (WEEE), which entered into force as European law on 14/02/2014, resulted in a major change in the treatment of electrical equipment at end-of-life.

The purpose of this Directive is, as a first priority, the prevention of WEEE, and in addition, to promote the reuse, recycling and other forms of recovery of such wastes so as to reduce disposal.

The WEEE logo on the product or on its box indicating collection for electrical and electronic equipment consists of the crossed-out wheeled bin, as shown below.



This product must not be disposed of or dumped with your other household waste. You are liable to dispose of all your electronic or electrical waste equipment by relocating over to the specified collection point for recycling of such hazardous waste. Isolated collection and proper recovery of your electronic and electrical waste equipment at the time of disposal will allow us to help conserving natural resources. Moreover, proper recycling of the electronic and electrical waste equipment will ensure safety of human health and environment. For more information about electronic and electrical waste equipment disposal, recovery, and collection points, please contact your local city center, household waste disposal service, shop from where you purchased the equipment, or manufacturer of the equipment.

ROHS COMPLIANCE

This product is in compliance with Directive 2011/65/EU of the European Parliament and of the Council of 8 June 2011 on the restriction of the use of certain hazardous substances in electrical and electronic equipment.

EU BATTERIES DIRECTIVE 2013/56/EU

A new battery directive 2013/56/EU on Battery and Accumulator replacing directive entered into force on the 1/07/2015. The directive applies to all types of batteries and accumulators (AA, AAA, button cells, lead acid, rechargeable packs) including those incorporated into appliances except for military, medical and power tool applications.

The directive sets out rules for collection, treatment, recycling and disposal of batteries, and aims to prohibit certain hazardous substances and to improve environmental performance of batteries and all operators in the supply chain.

INSTRUCTIONS FOR USERS ON REMOVAL, RECYCLING AND DISPOSAL OF USED BATTERIES

To remove the batteries from your equipment or remote control, reverse the procedure described in the owner's manual for inserting batteries.

For products with a built-in battery that lasts for the lifetime of the product, removal may not be possible for the user. In this case, recycling or recovery centers handle the dismantling of the product and the removal of the battery. If, for any reason, it becomes necessary to replace such a battery, this procedure must be performed by authorized service centers.

In the European Union and other locations, it is illegal to dispose of any battery with household trash. All batteries must be disposed of in an environmentally sound manner. Contact your local waste-management officials for information regarding the environmentally sound collection, recycling and disposal of used batteries.

WARNING: Danger of explosion if battery is incorrectly replaced. To reduce risk of fire or burns, don't disassemble, crush, puncture, short external contacts, expose to temperature above 60°C (140°F), or dispose of in fire or water. Replace only with specified batteries.

The symbol indicating 'separate collection' for all batteries and accumulators shall be the crossed-out wheeled bin shown below:



DECLARATION OF CONFORMITY

HARMAN International hereby declares that this equipment is in compliance with the essential requirements and other relevant provisions of Directive 2014/53/EU and RoHS 2011/65/EU Directive. The declaration of conformity may be consulted in the support section of our Web site, accessible from www.jbl.com.



AVIS CONCERNANT LES DEEE

La directive relative aux déchets d'équipements électriques et électroniques (DEEE), adoptée comme loi européenne le 14/02/2014, a supposé un important changement dans le traitement des équipements électriques en fin de vie.

L'objectif principal de cette directive est de prévenir les DEEE et de favoriser la réutilisation, le recyclage et d'autres formes de récupération de ces déchets afin de réduire la mise au rebut.

Le logo des DEEE apposé sur cet équipement ou sur son emballage, qui indique la collecte des équipements électriques et électroniques, est représenté sous la forme d'une poubelle barrée, comme indiqué ci-dessous.



Ce produit ne doit pas être jeté avec les ordures ménagères. Il vous incombe de mettre au rebut tous vos équipements électriques et électroniques en fin de vie en vous rendant à un point de collecte approprié en vue de les recycler. Une collecte isolée et une récupération appropriée de vos déchets d'équipements électriques ou électroniques au moment de la mise au rebut nous permettent de contribuer à la préservation des ressources naturelles. Par ailleurs, un recyclage approprié des déchets d'équipements électriques ou électroniques assure la protection de la santé humaine et de l'environnement. Pour obtenir de plus amples informations sur la mise au rebut, la récupération et les points de collecte des déchets d'équipements électriques ou électroniques, contactez votre mairie, votre service de collecte des déchets, le magasin qui vous a vendu l'équipement, ou le fabricant du produit.

CONFORMITÉ À LA DIRECTIVE RELATIVE À L'UTILISATION DE CERTAINES SUBSTANCES DANGEREUSES

Cet appareil est conforme à la directive 2011/65/UE du Parlement européen et du Conseil du 8 juin 2011 relative à la limitation de l'utilisation de certaines substances dangereuses dans les équipements électriques et électroniques.

DIRECTIVE 2013/56/EU RELATIVE AUX PILES ET ACCUMULATEURS

La nouvelle directive 2013/56/EU relative aux piles et accumulateurs est entrée en vigueur le 01/07/2015. Cette directive s'applique à tous les types de piles et accumulateurs (AA, AAA, pile bouton, pile/accumulateur plomb-acide, pile/accumulateur rechargeable), notamment à ceux incorporés dans les appareils électriques, sauf si ces derniers sont utilisés à des fins militaires ou médicales, ou s'il s'agit d'outils électriques.

Cette directive établit des règles pour la collecte, le traitement, le recyclage et la mise au rebut des piles et accumulateurs; elle vise par ailleurs à interdire certaines substances dangereuses et à améliorer les performances environnementales des piles et accumulateurs et de tous les opérateurs de la chaîne d'approvisionnement.